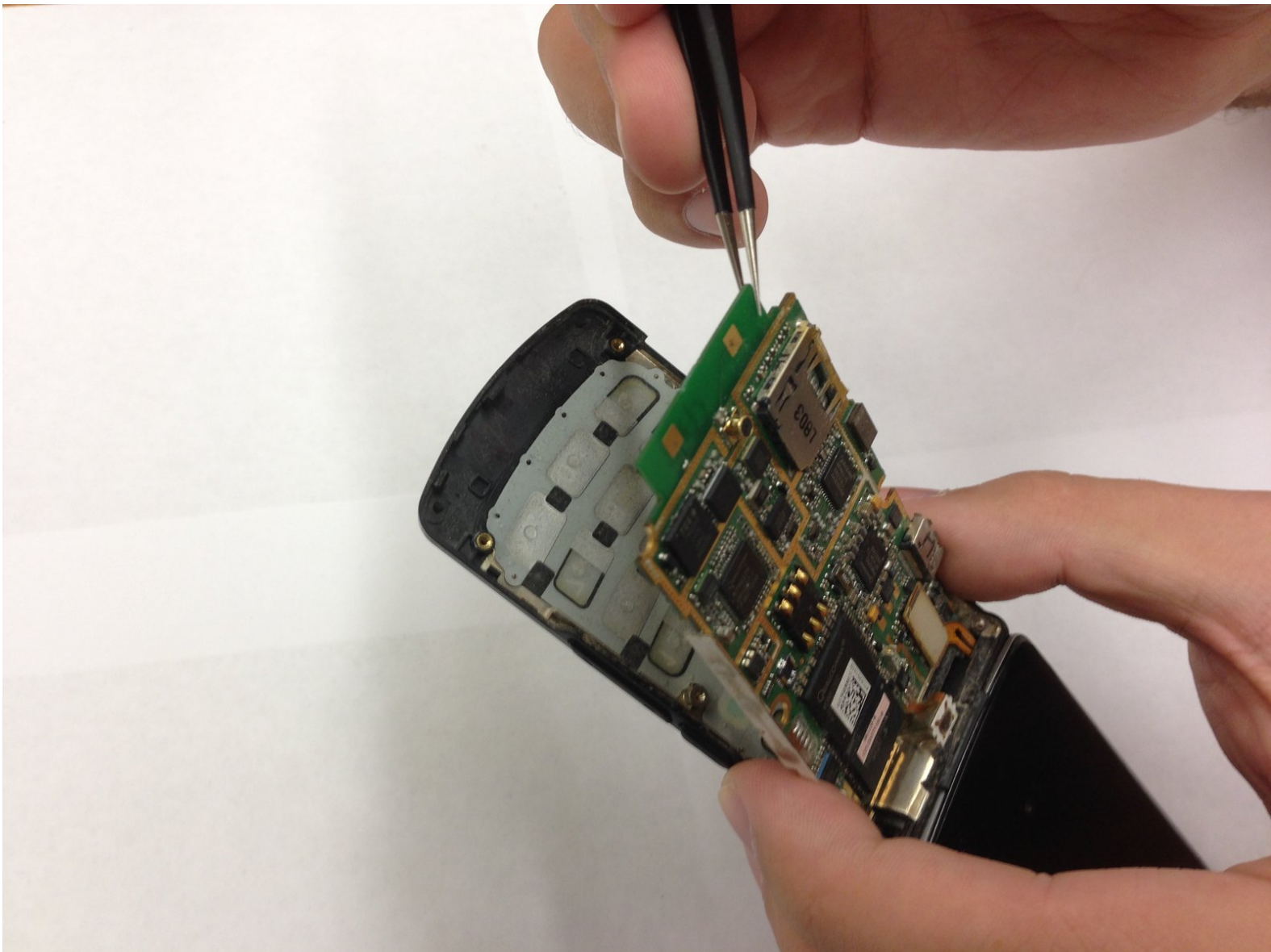




# LG CU515 SKU 64743 Device Mother Board Replacement

This guide will use step-by-step instructions and pictures to show how to replace the motherboard of the LG CU515 SKU.

Written By: Maggie



# INTRODUCTION

This guide explains how to remove the motherboard. This is a fairly difficult guide for the LG CU515 SKU 64743 Device. Removing the motherboard will require many tools and steps. However, this guide will take you through each step in detail so as to make the process as easy as possible.



## TOOLS:

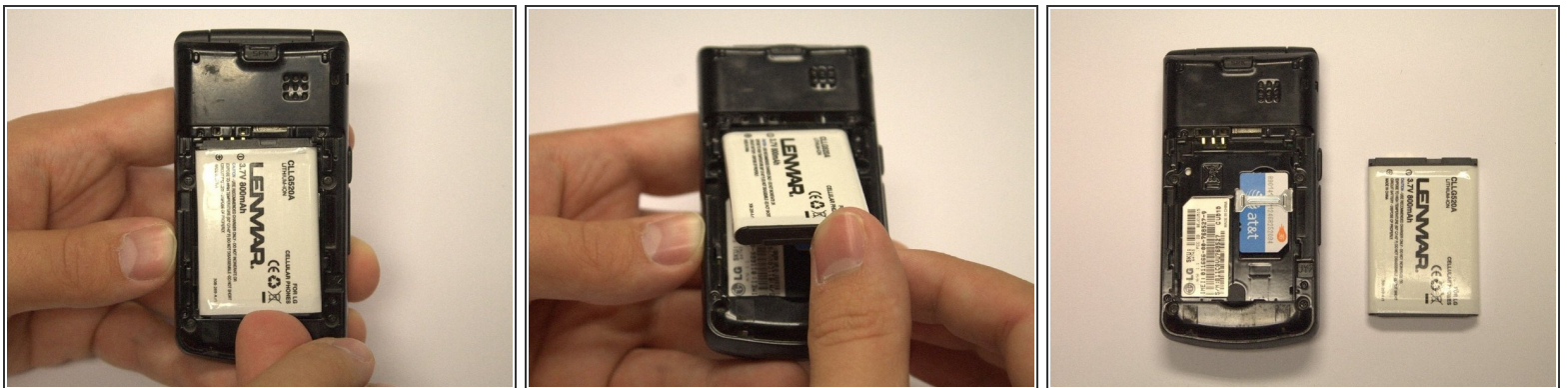
- [Phillips #00 Screwdriver](#) (1)
  - [Tweezers](#) (1)
-

## Step 1 — Back Cover



- Locate the raised tab at the top of the back cover.
- Holding the phone in one hand and using your thumb on your other hand, push down on the tab until the cover detaches from the phone.
- Slide the cover down until it is completely removed from the phone.

## Step 2 — Battery



- Holding the phone in one hand and using your index finger on your other hand, remove the battery from the phone by prying it out at indentation located at the bottom of the phone.

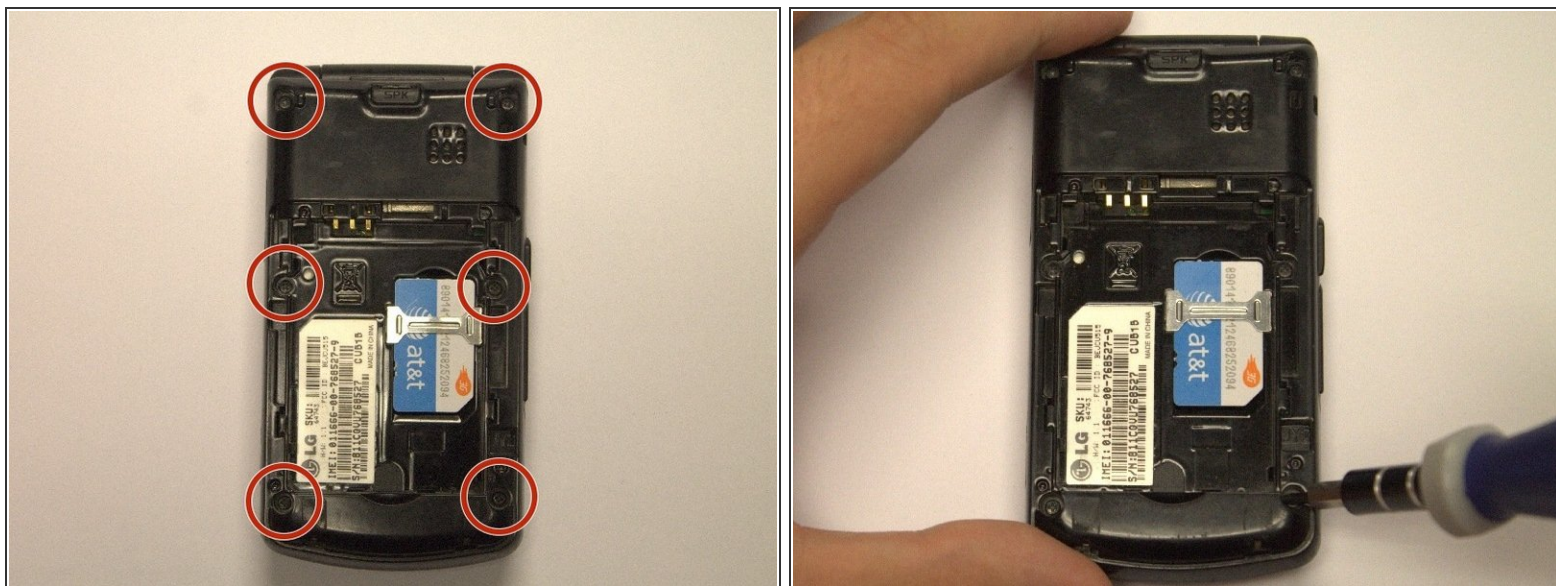


### Step 3 — Mother Board



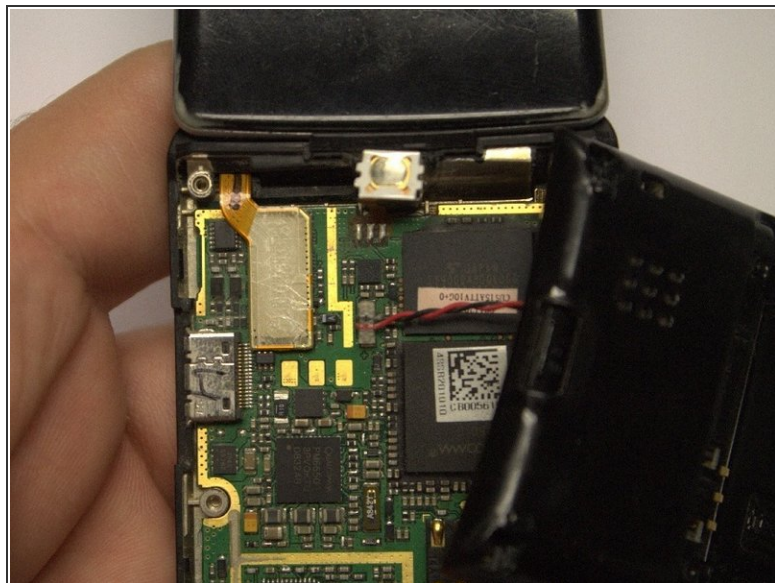
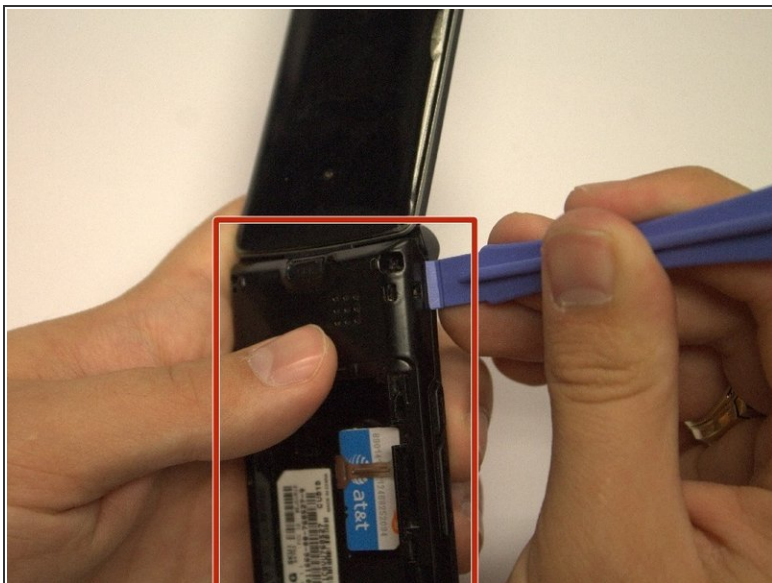
- Using a spudger or other sharp tool, remove the two rubber pieces on the top of the back of the phone.

### Step 4



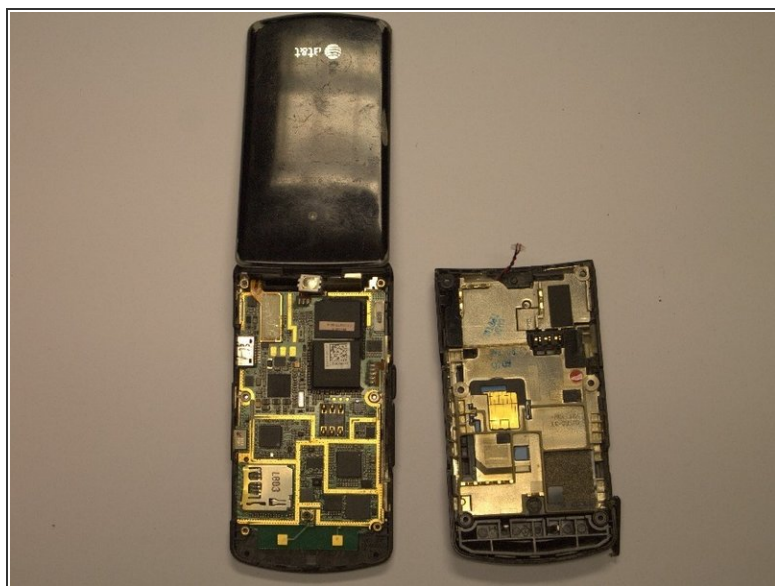
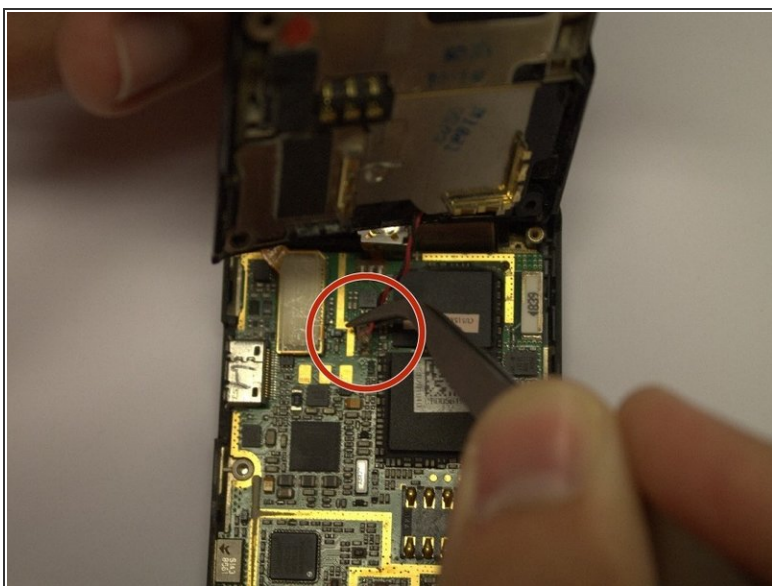
- Use a small Phillips head screwdriver to remove the six 3mm screws identified in the photo.

## Step 5



- Using a pry bar or flat headed screw driver, pry the back cover from the front and lowly lift apart.  
ⓘ *It may be necessary to pry around the entire edge in order to remove the back cover.*

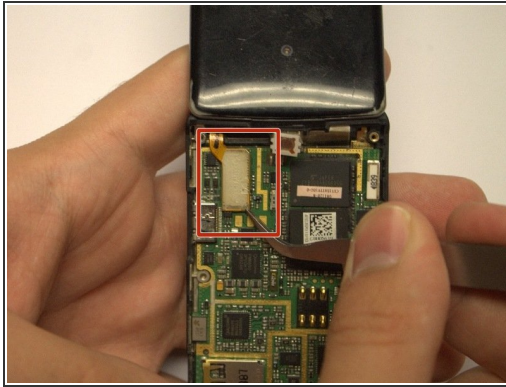
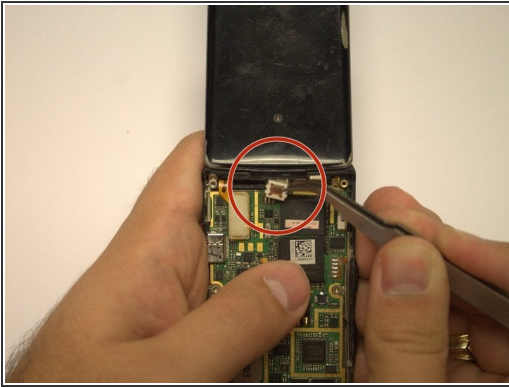
## Step 6



- Use tweezers to carefully unplug the wires connecting the speakers to the mother board.



## Step 7



- Locate the small tab located at the top, center of the motherboard. It connects the motherboard to the rest of the phone. Detach it using the tweezers.
- Carefully unplug the rectangular ribbon cable connection using tweezers.
- It should now be possible to lift the motherboard from the rest of the phone.

To reassemble your device, follow these instructions in reverse order.