



PlayStation Laser from a SCPH-7501 or SCPH-9001 Replacement

This guide will help you replace a laser from a SCPH-7501 or SCPH-9001 into a SCPH-5501.

Written By: Unchi



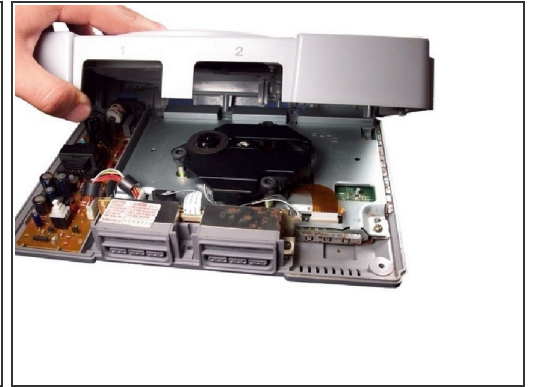
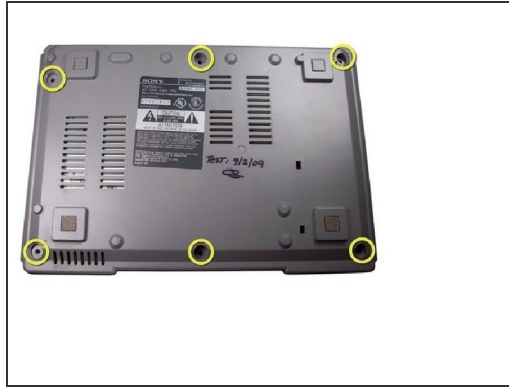
INTRODUCTION

This will repair your SCPH-5501 without buying a new KSM-440-ADM laser off of ebay.

TOOLS:

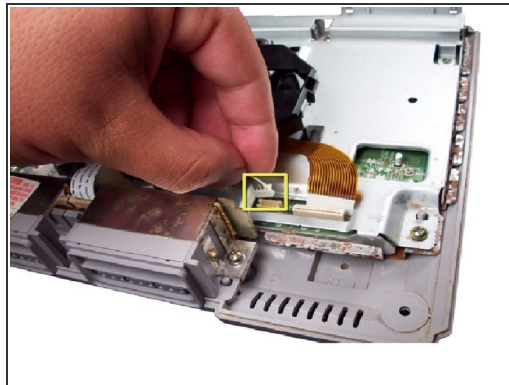
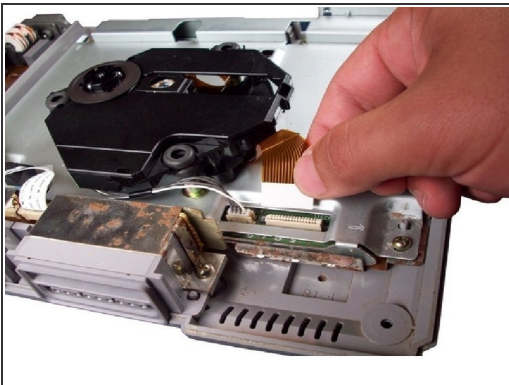
- [Pro Tech Toolkit](#) (1)
-

Step 1 — Laser from a SCPH-7501



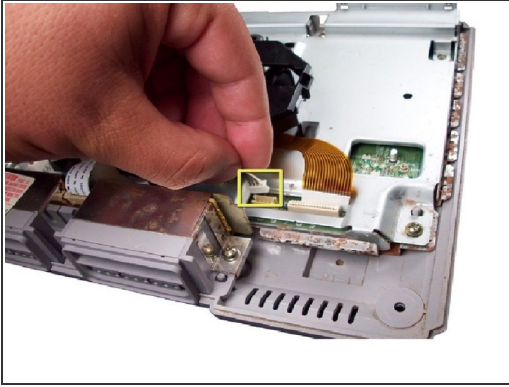
- Remove the parallel port cover on the back of the PlayStation.
- Flip over the PlayStation and remove the six screws from the bottom.
- Turn the PlayStation upright. Remove the cover by lifting it up.

Step 2



- Carefully disconnect the gold-colored ribbon cable from its connector. To avoid damaging the cable, pull it by the white, reinforced tab.

Step 3



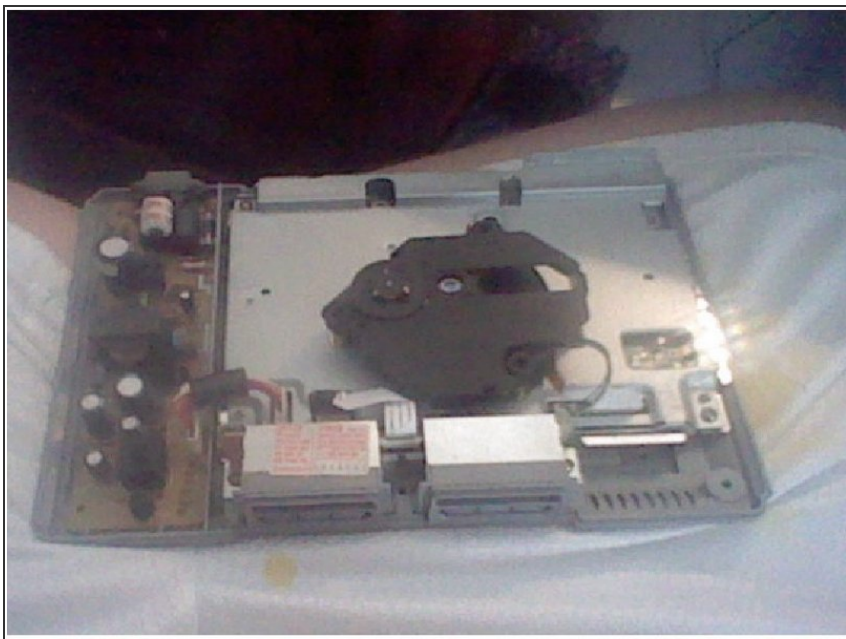
- Disconnect the second cable by pulling up on the plastic connector at the end.
- Remove the 2 screws and take the black bottom piece of the old Optical drive.
- Take the new Optical drive from either a SCPH-7501 or an SCPH-9001.
- Gently pull on the orange ribbon, but not too much or you could rip it.

Step 4



- Take the bottom piece you took out and place it on the new Optical drive and screw it on the new drive.

Step 5



- Here is what your work should look like.
- Put it back together, plug it in, turn it on and test it to see if it works.

To reassemble your device, follow these instructions in reverse order.