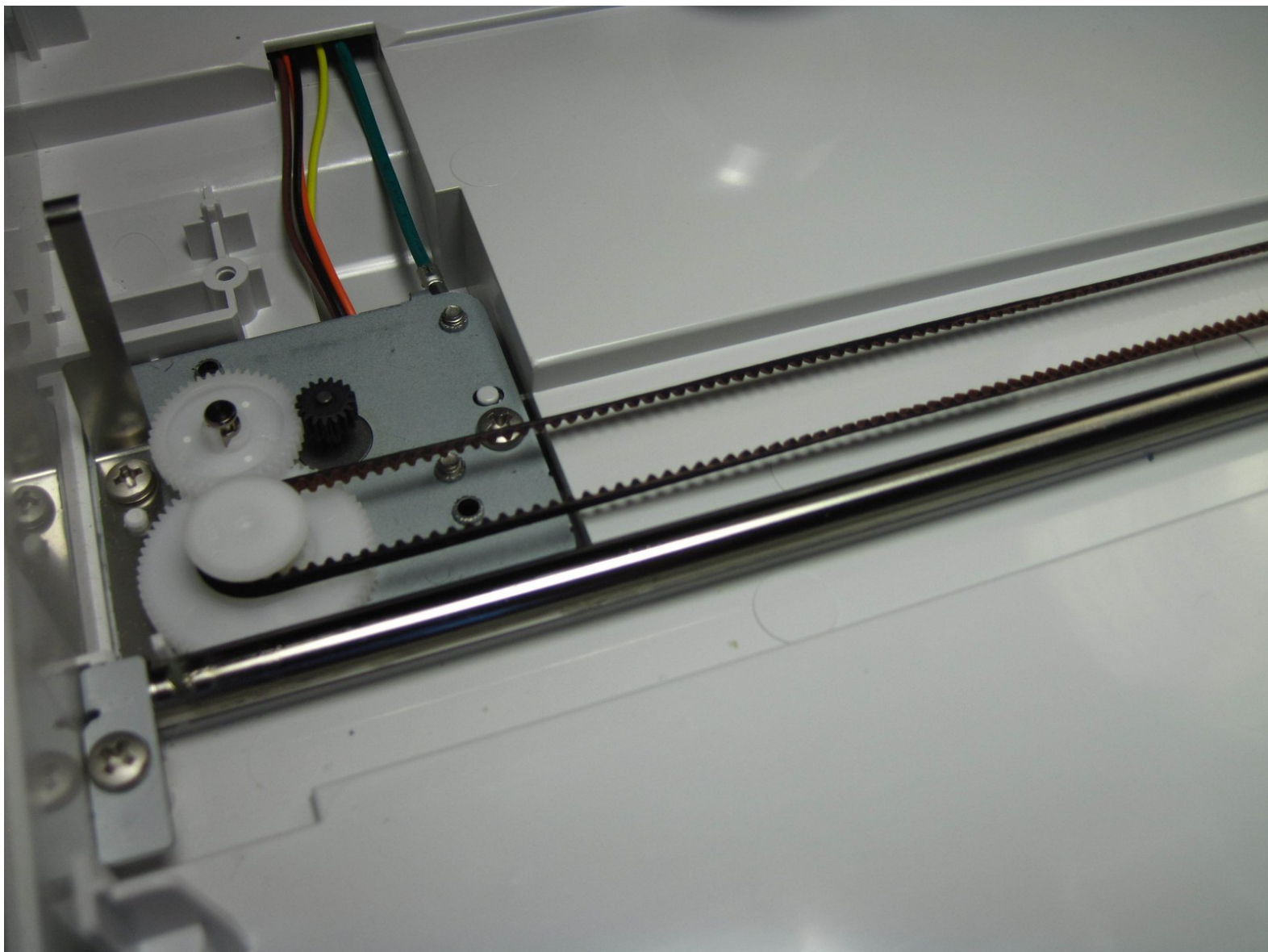




Canon ImageCLASS MF4350d Scanner Belt Replacement

This guide will allow you to fix your scanner's belt.

Written By: Tanner Papenfuss



INTRODUCTION

If you find that your scanner light does not seem to be moving, then your scanner belt could be the problem. Your scanner belt could be damaged or worn. This guide will help you to replace your scanner belt.



TOOLS:

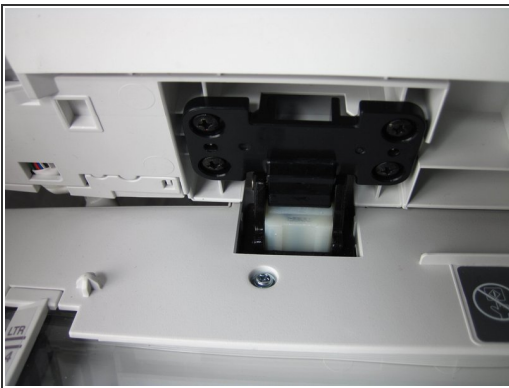
- [Phillips #2 Screwdriver](#) (1)
-

Step 1 — Scanner Disassembly



- ⚠ If at any point you see glass that seems cracked or broken, handle with care. Broken glass is sharp and can cause serious damage.
- Lift up the lid. Then be sure to examine the glass. If there are any cracks or broken fragments handle with extreme care.

Step 2



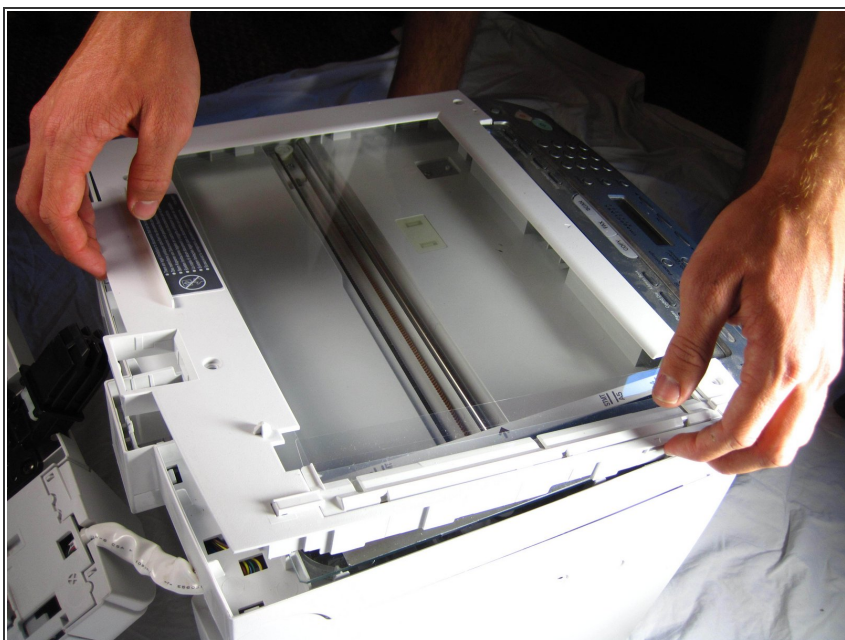
- Locate the black and white hinges.
- Gently lift out the black and white hinges.

Step 3



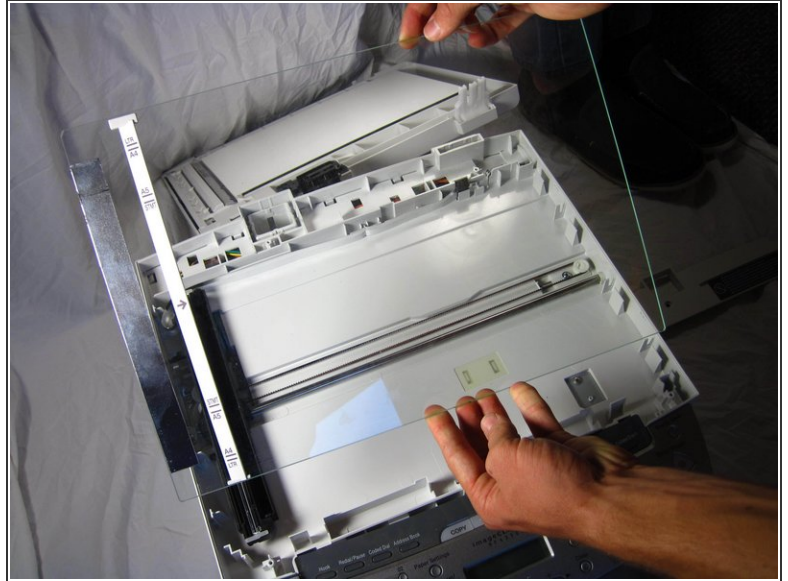
- Next, locate and remove the four 10mm screws.

Step 4



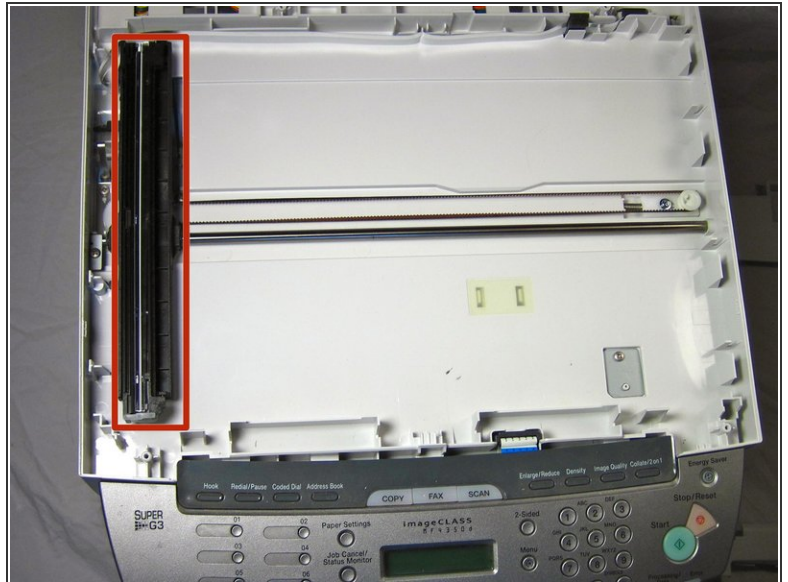
- Gently, pry off the top plate, starting from the back of the printer.

Step 5



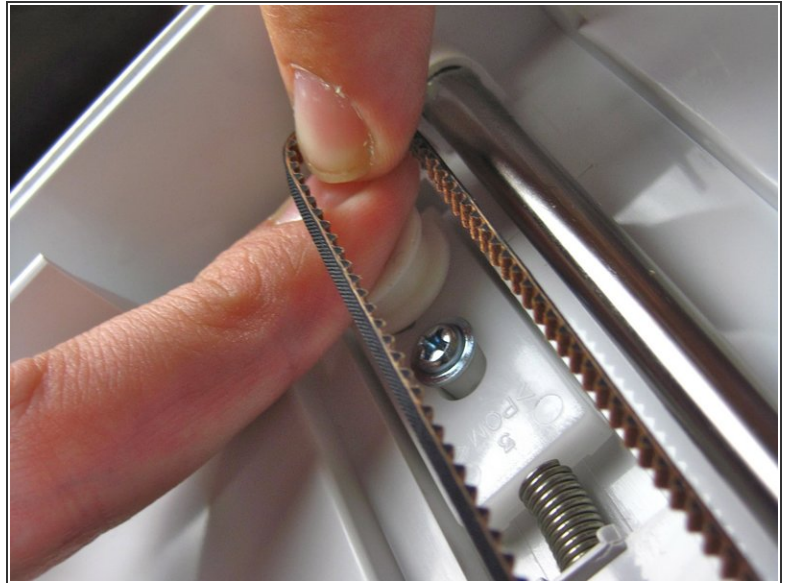
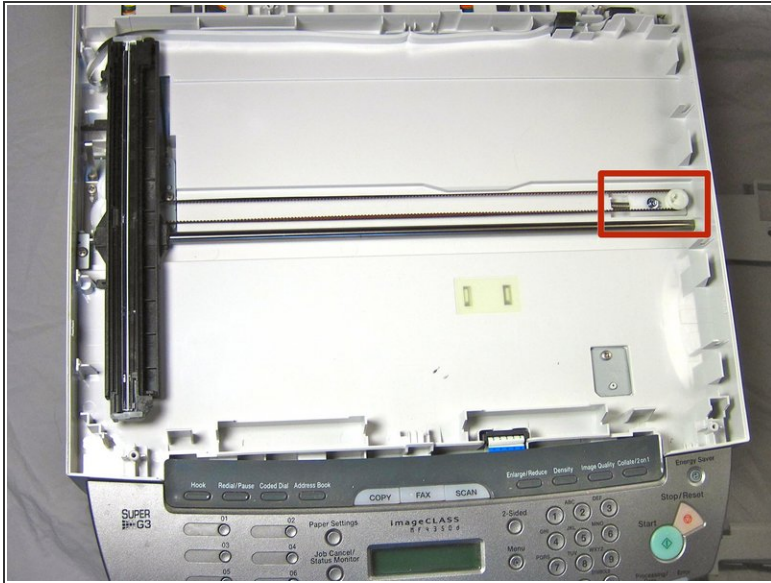
⚠ After you have taken off the plate, check to make sure that there is no broken glass. If there is broken glass handle it with gloves. Broken glass, if handled improperly, can cause physical injury.

Step 6 — Scanner Belt



- Remove the black component by gently pulling it up from the black scanner belt

Step 7



- Press down on the white release and force it in toward the spring as shown. While you do this, pull the scanner belt out of the track.
- Take a new belt and put it in the same way that you took it out.

To reassemble your device, follow these instructions in reverse order.