



Canon ImageCLASS MF4350d Scanner

Disassembly

This will allow you to open your scanner up and fix the components inside.

Written By: Tanner Papenfuss





TOOLS:

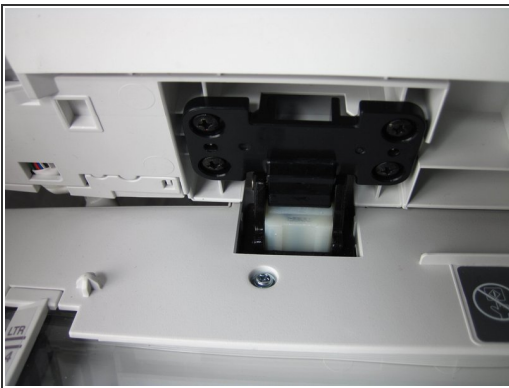
- [Phillips #2 Screwdriver](#) (1)
-

Step 1 — Scanner Disassembly



- ⚠ If at any point you see glass that seems cracked or broken, handle with care. Broken glass is sharp and can cause serious damage.
- Lift up the lid. Then be sure to examine the glass. If there are any cracks or broken fragments handle with extreme care.

Step 2



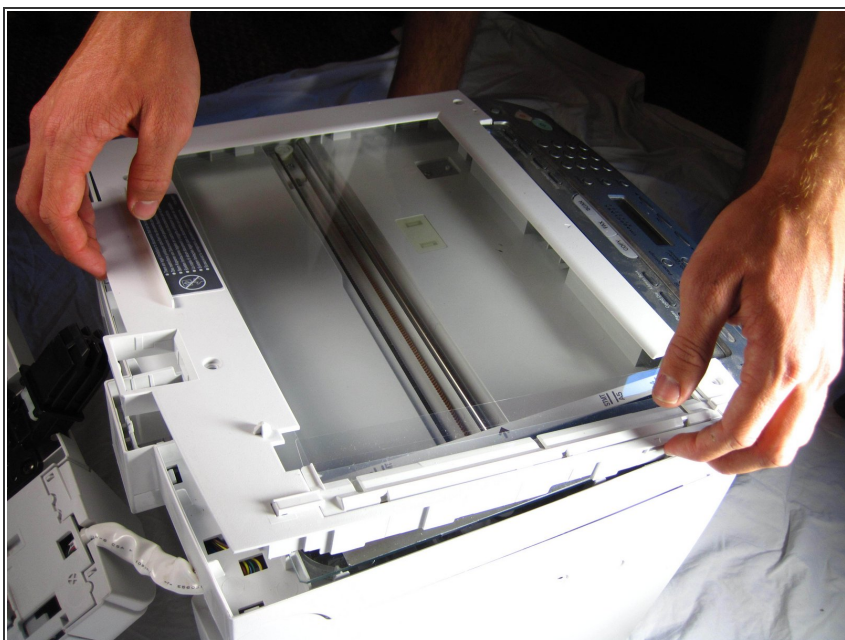
- Locate the black and white hinges.
- Gently lift out the black and white hinges.

Step 3



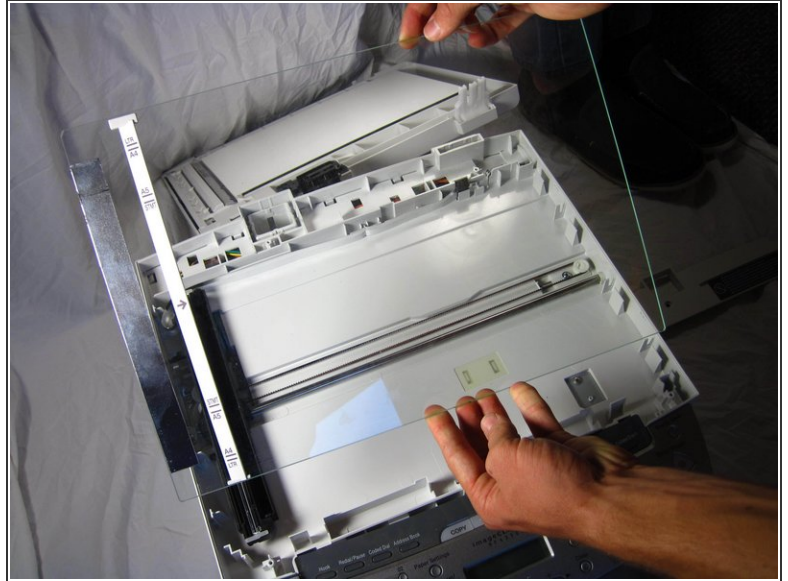
- Next, locate and remove the four 10mm screws.


Step 4



- Gently, pry off the top plate, starting from the back of the printer.

Step 5



 After you have taken off the plate, check to make sure that there is no broken glass. If there is broken glass handle it with gloves. Broken glass, if handled improperly, can cause physical injury.

To reassemble your device, follow these instructions in reverse order.