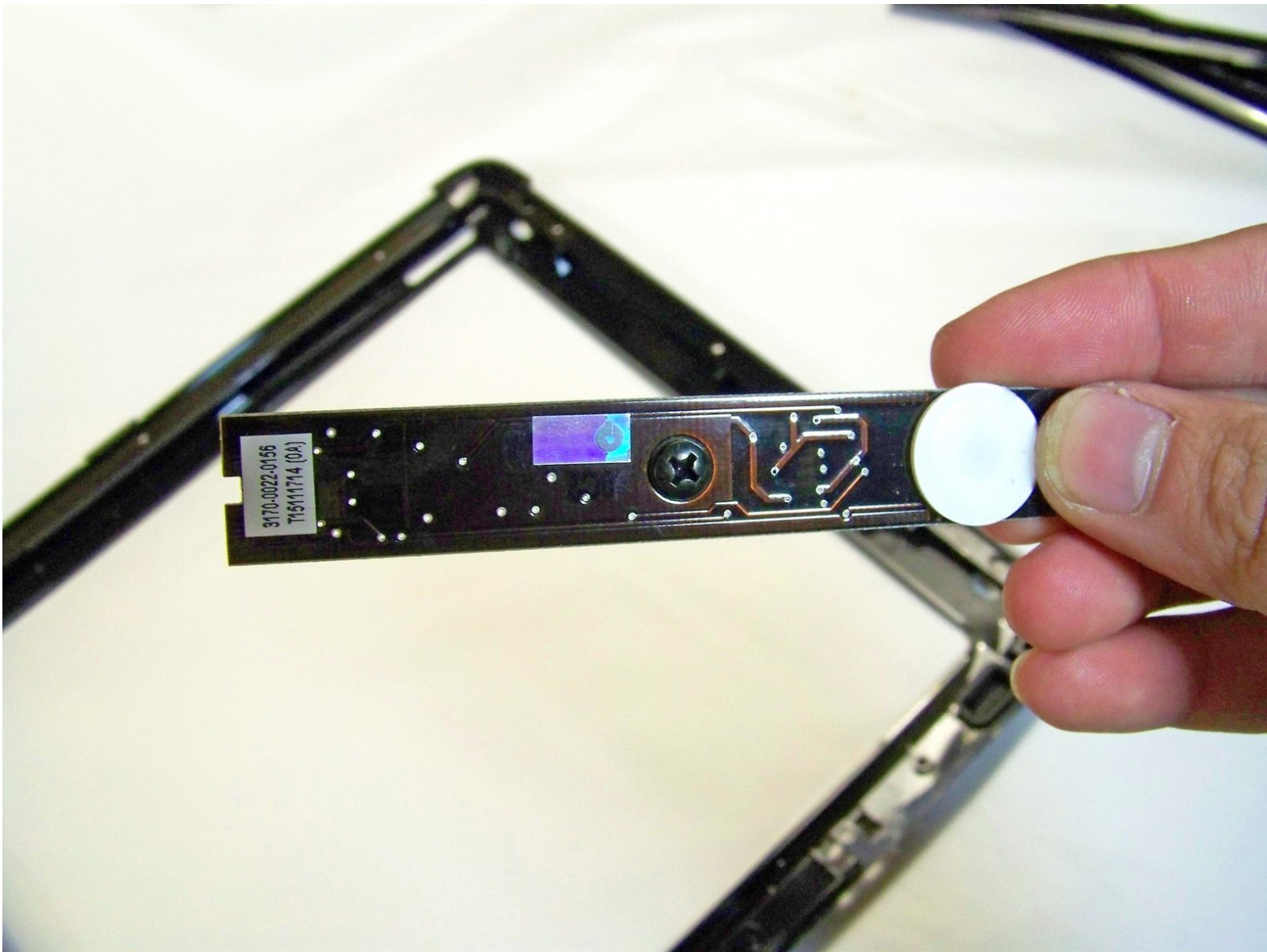




# Apple Studio Display M7649 Front Buttons Replacement

Written By: Andrew Tsao



---

# INTRODUCTION

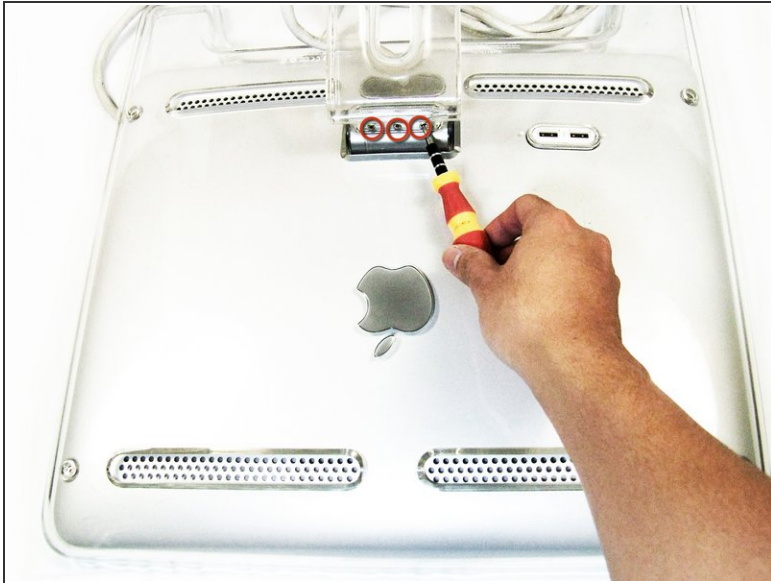
Replacing the front buttons on the display.



## TOOLS:

- [2 mm Hex Screwdriver](#) (1)
  - [Phillips #0 Screwdriver](#) (1)
  - [Spudger](#) (1)
-

## Step 1 — Stand



- Lay the display facing down with the stand away from you.
- Remove the three size 2.0 hex screws on the swing arm and remove the swing arm as well as the plastic shield under it.

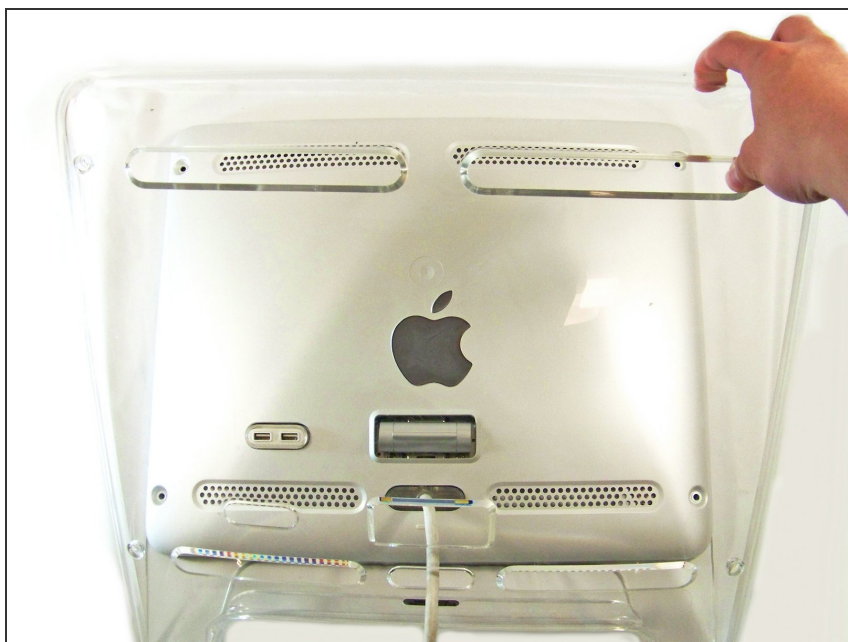
## Step 2 — Panels



- Remove the size 2.5 hex screws from each corner that connects the panels to the display and remove them.

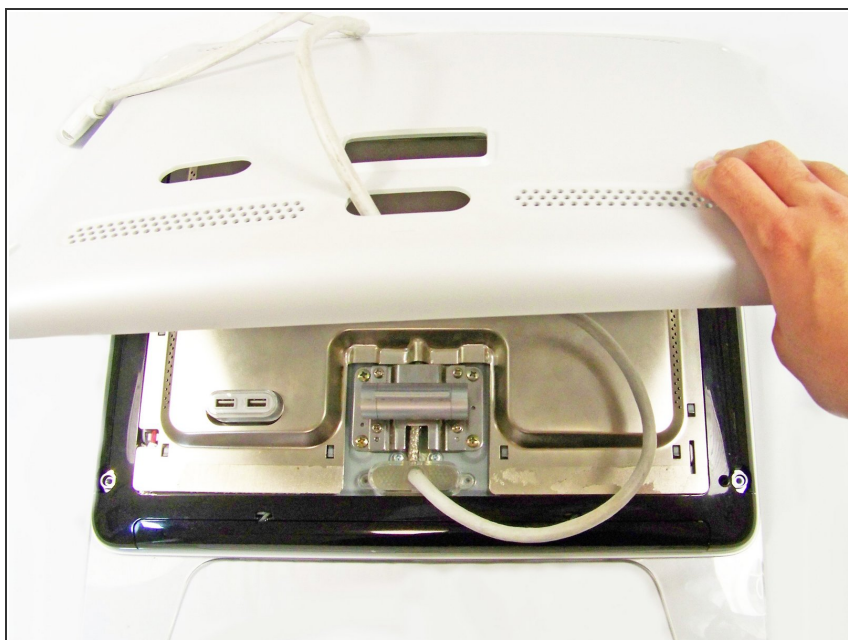


### Step 3



- Rotate the display so the legs of the display are now facing you
- Grip the top of the clear panel and lift it upwards, and pull the ADC cable through the hole.

### Step 4



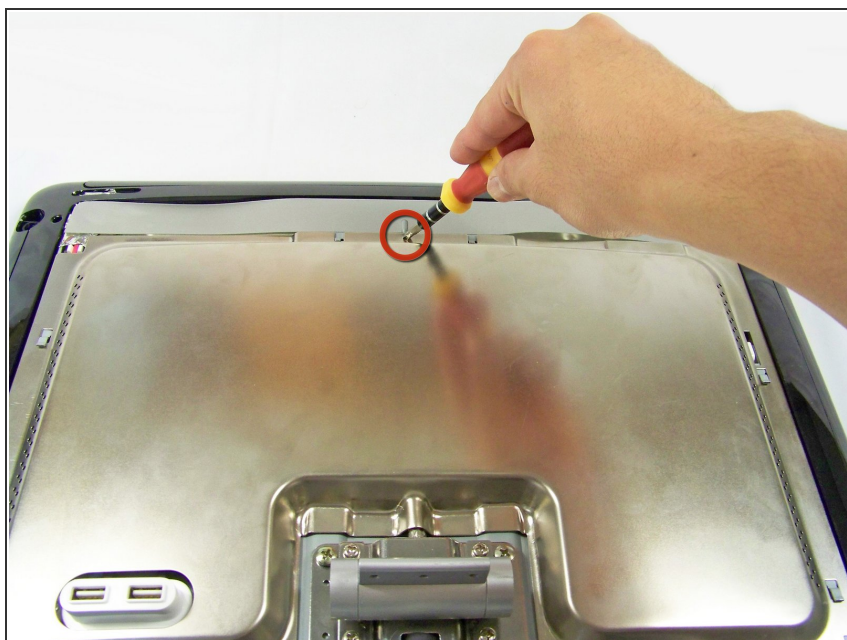
- Remove the grey back panel by lifting the bottom and pulling the ADC cable through the hole.

## Step 5 — Metal EMI Shield



- The next layer will be a shiny metal panel, which might have some stickers. Make sure to remove these stickers.

## Step 6



- Now locate and remove the lone Phillips screw holding the EMI shield to the display

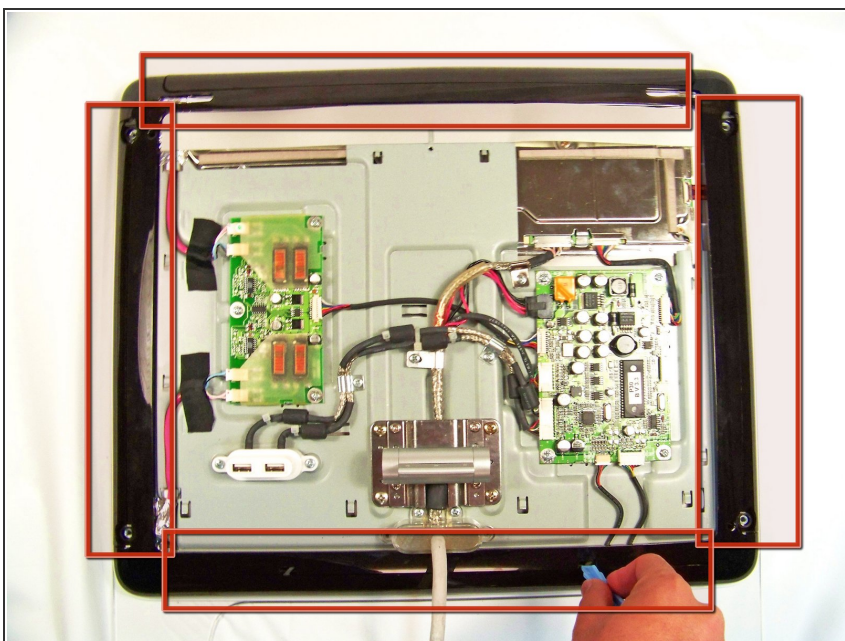


## Step 7



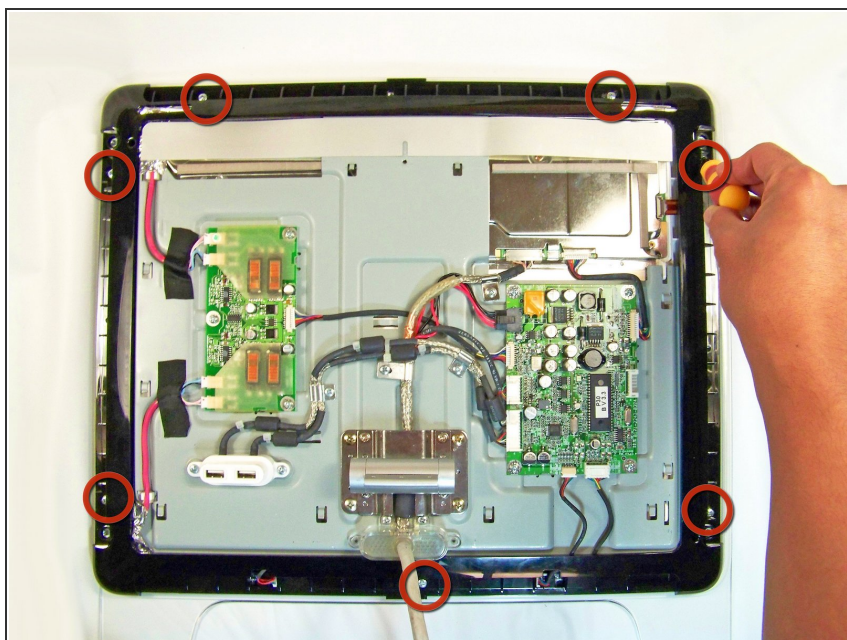
- Now that the screw has been removed, slide the panel towards your body and lift it out.
- ① You may need to remove the clear USB port cover to remove the metal EMI shield.

## Step 8 — Front Buttons



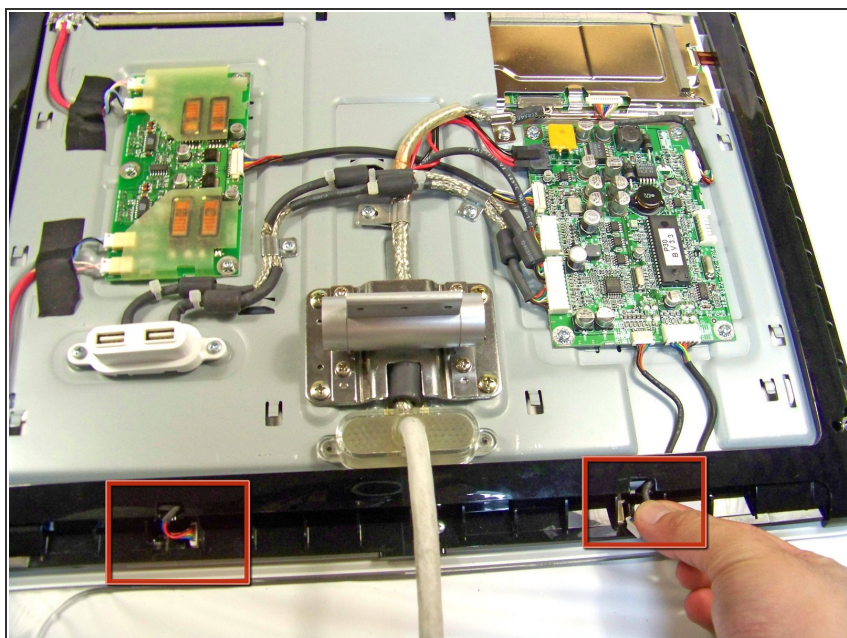
- Using the spudger, remove the four black panel covers on the edges of the display.

## Step 9



- Remove these screws under the panels.
- ⓘ There may be more screw holes than actual screws

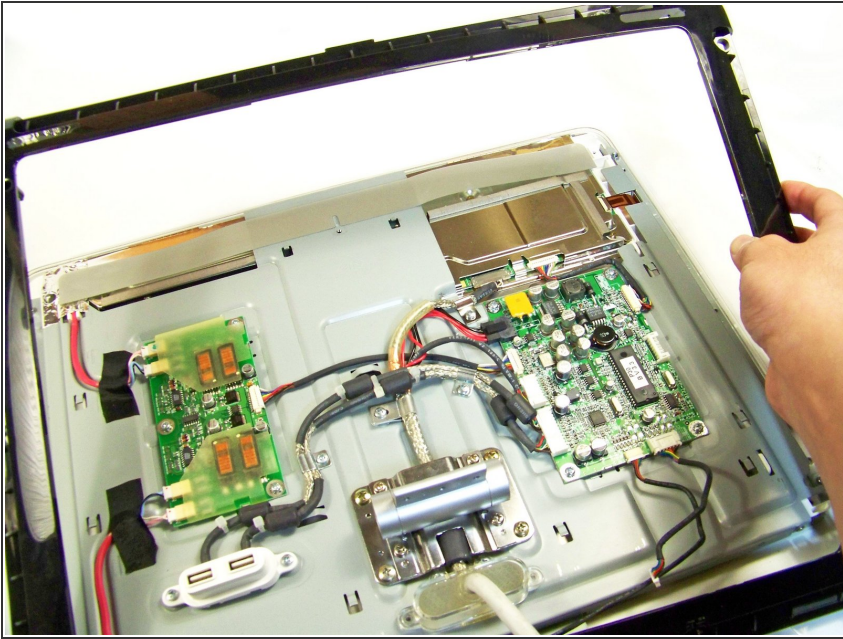
## Step 10



- Remove the two connections that connect the buttons to the logic board



## Step 11



- Remove the outer frame and pull the cables through the hole. Flip the frame upside down.

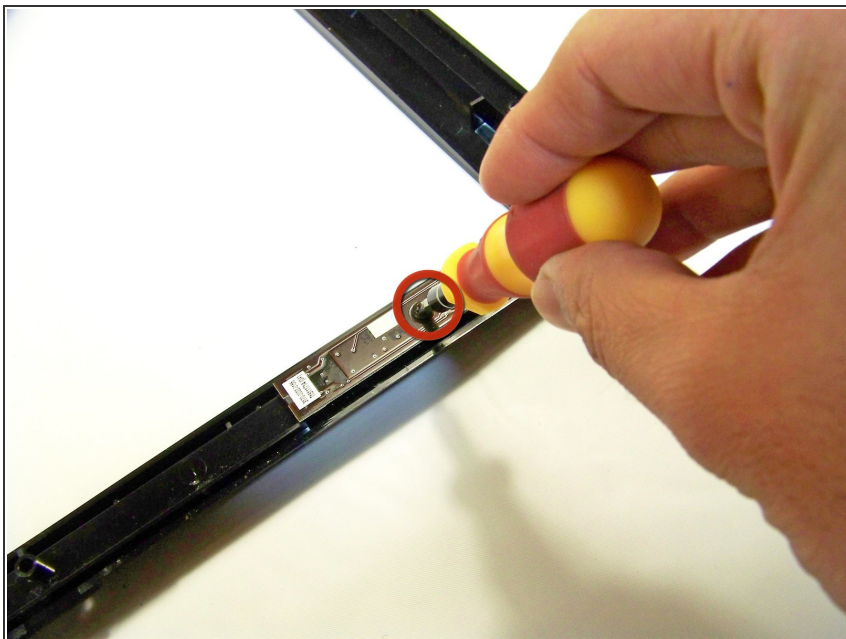
## Step 12



- The red highlighted box is the power button
- The teal highlighted box is the brightness button
- ⓘ This guide will focus on the power button. Removal of the brightness button will follow the same instructions, but you will be working on the left button (teal box) instead of the right (red box)

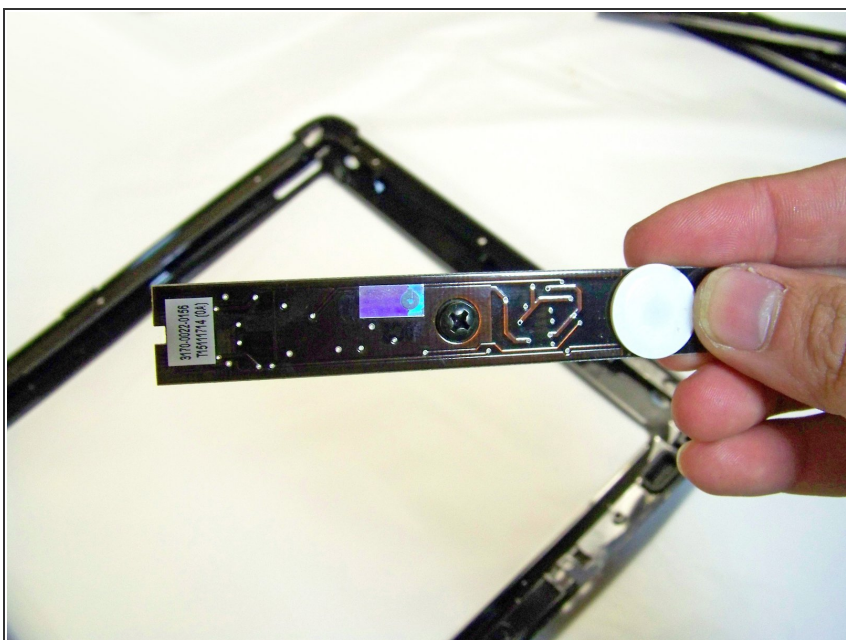


## Step 13



- Remove the screws at the bottom holding the button(s) down
- ⓘ In this picture we are removing the power button

## Step 14



- Remove and replace the button(s).

To reassemble your device, follow these instructions in reverse order.