



Samsung Galaxy Nexus Main Display Glass Replacement

Replace a broken display on your Samsung Galaxy Nexus.

Written By: Carmine Tenaglia



INTRODUCTION

Use this guide to replace the display on a Samsung Galaxy Nexus. Note that there may be slight differences between the phone depicted and your model of the Galaxy Nexus.

TOOLS:

- [Phillips #0 Screwdriver](#) (1)
 - [Tweezers](#) (1)
 - [Spudger](#) (1)
 - [iFixit Opening Tools](#) (1)
-

Step 1 — Removing Back Cover



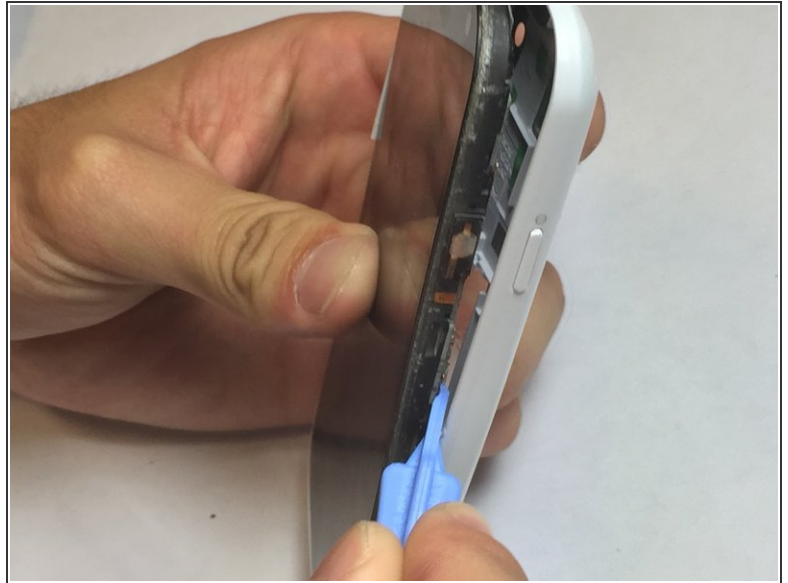
- Open the back cover of the phone with your fingers or use the plastic opening tools to pry the back cover off of the phone.
- Remove the battery by prying it free from the divot at the bottom.
- Store the back cover and the battery in a safe place, such as a bowl, until you are ready to re-install them.

Step 2



- Remove the four 4.5 mm Phillips screws from the rear of the phone.

Step 3



- Flip the phone over so that the screen faces upward.
- Insert a plastic opening tool into the seam between the screen and the outer case. Work the plastic opening tool around the phone without removing it from the seam.
- Slowly pry the outer case from the screen.

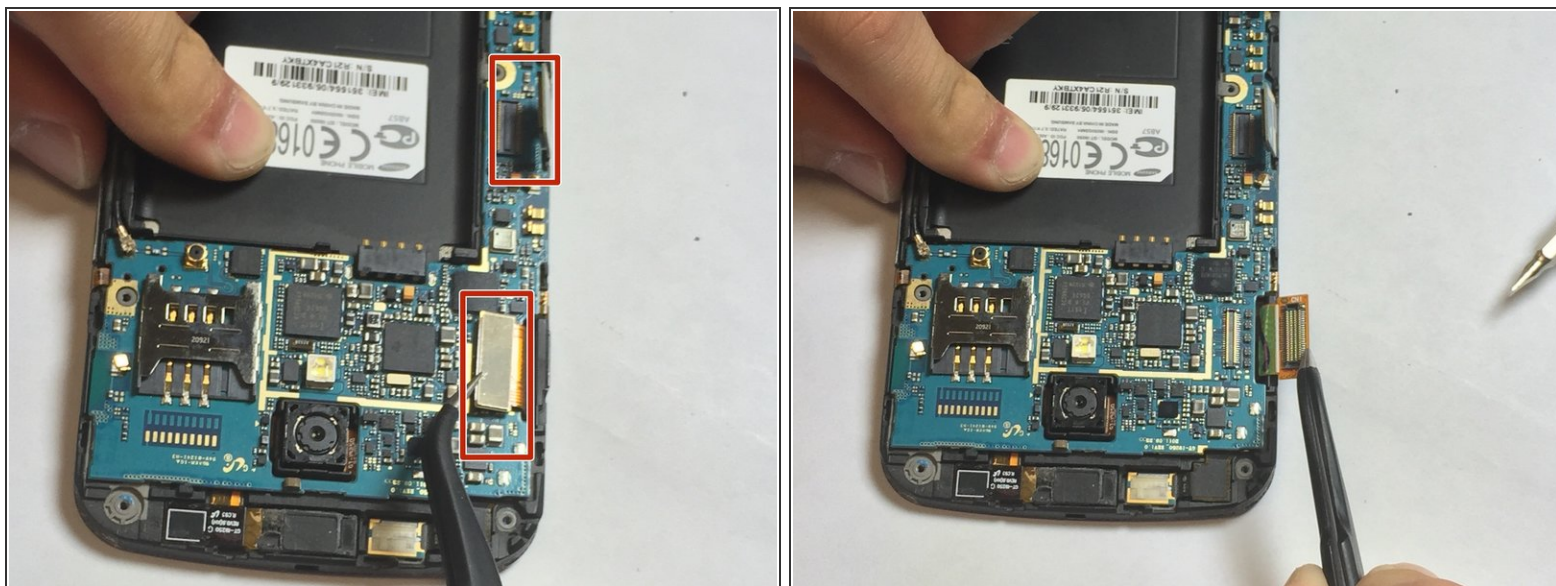
 Work carefully. Excessive force can easily damage the case.

Step 4



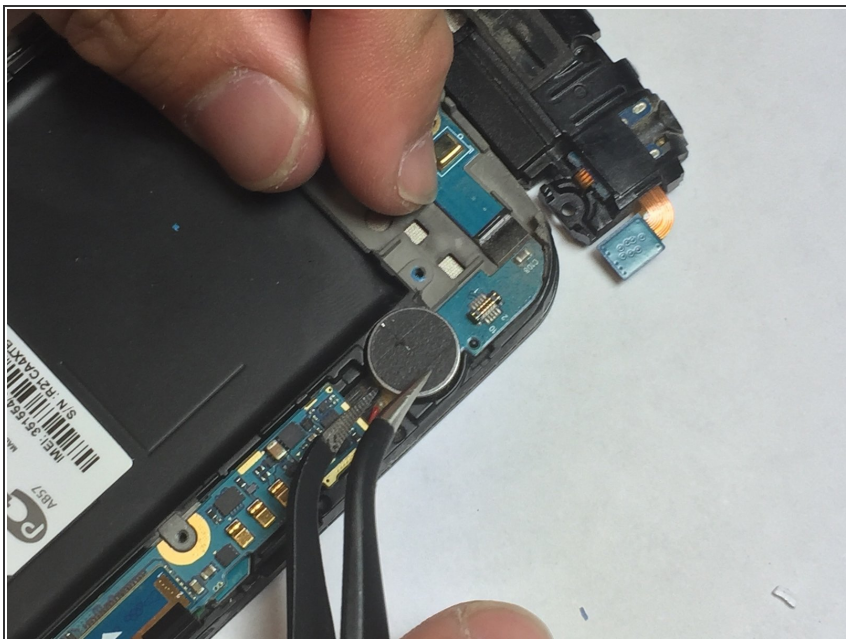
- Remove a single 4 mm Phillips #00 screw from the bottom of the phone.
- Lift up the flat connector from its socket on the motherboard.
- Lift the entire headphone jack assembly from the phone.

Step 5



- Disconnect the two ribbon cables from the motherboard.

Step 6



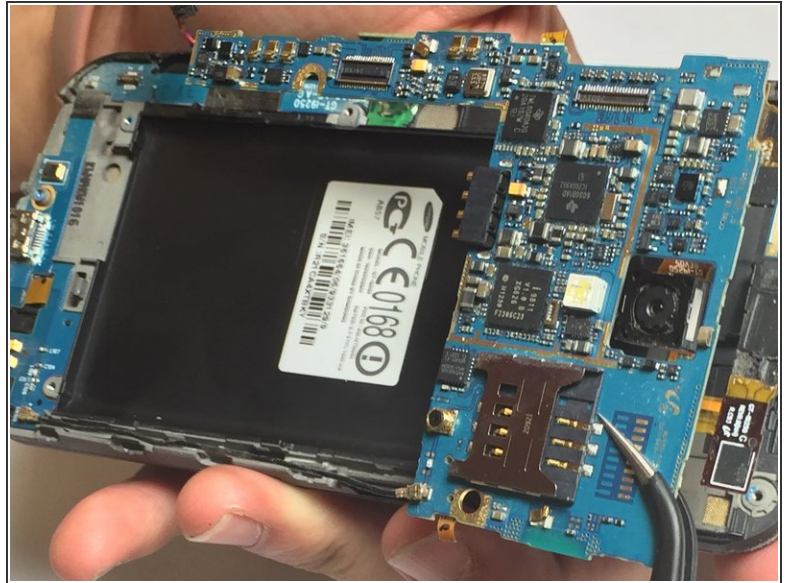
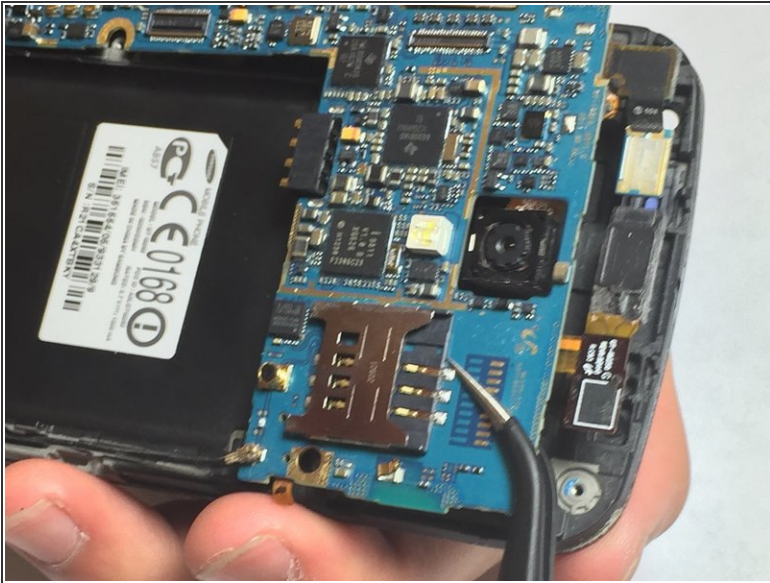
- Using tweezers or a spudger, lift the vibrator motor from its recess in the midframe.

Step 7



- Using tweezers, gently disconnect the antenna cable from its socket on the motherboard.

Step 8



- Use tweezers to pull the motherboard out of the phone.
- ⚠ Work carefully. Depending on the model, the underside of the motherboard may still have ribbon cables connecting it to the display assembly.

Step 9



- Starting near the USB port, use your tweezers to pull the small daughterboard from the phone.

To reassemble your device, follow these instructions in reverse order.