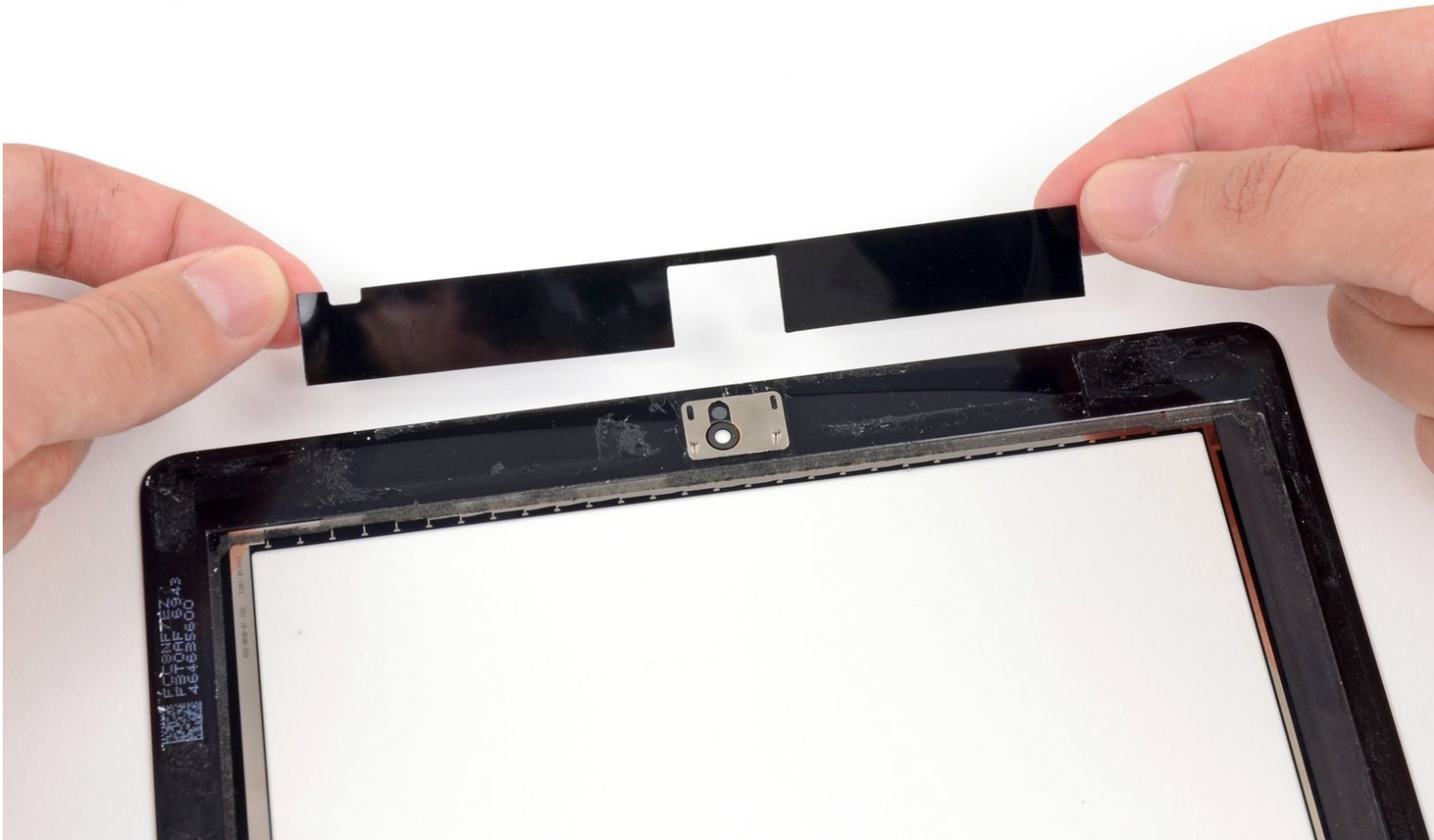




# iPad 4 CDMA Adhesive Strips Replacement (Existing Panel)

Replace the Adhesive Strips in your iPad 4 CDMA.

Written By: Walter Galan



# INTRODUCTION

Use this guide to replace adhesive strips and re-seal your iPad 4 after a repair.

**Only for use with EXISTING front panel assemblies.**



## TOOLS:

- [Tweezers](#) (1)
- [iFixit Opening Tools](#) (1)
- [Phillips #00 Screwdriver](#) (1)
- [Spudger](#) (1)



## PARTS:

- [iPad Retina Adhesive Strips](#) (1)

## Step 1 — Home Button Control Board



- Remove the two 2.1 mm Phillips #00 Phillips screws securing the home button control board to the home button mounting bracket.

## Step 2



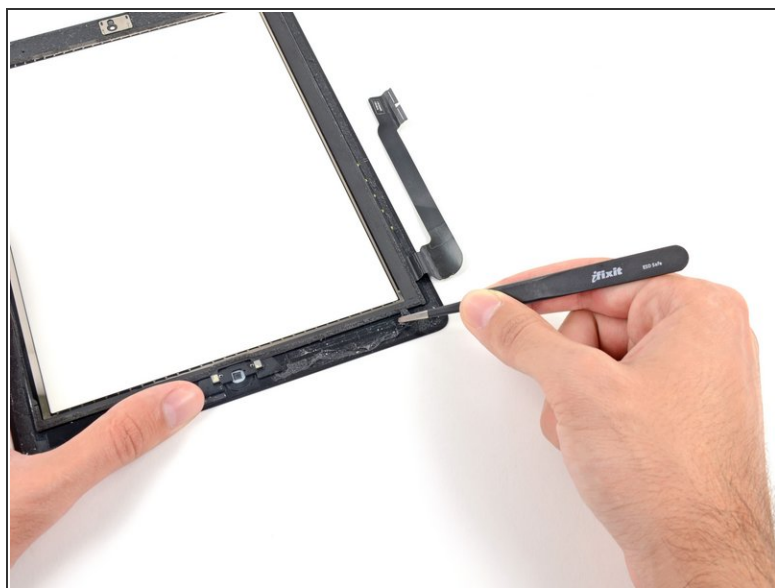
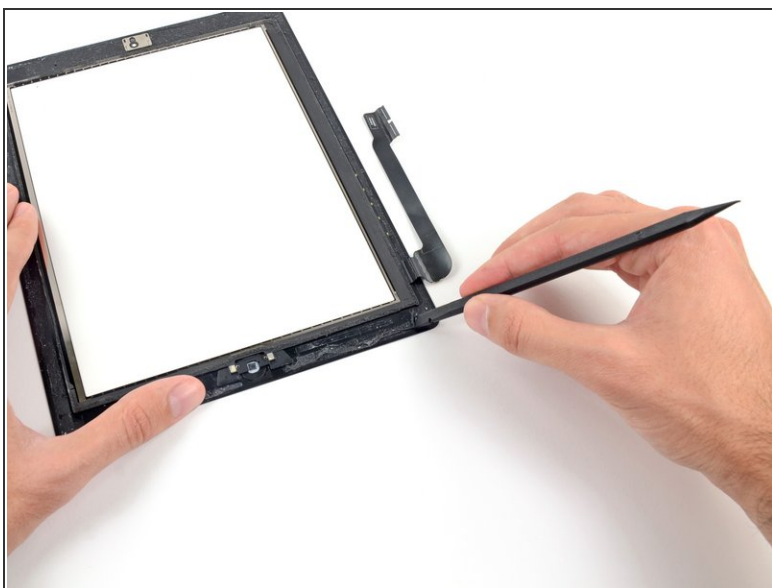
- Wedge the flat edge of a plastic opening tool in between the right end of the home button control board and the home button mounting bracket.
- Depress the plastic opening tool downwards to pry the adhesive securing the home button control board from the home button mounting bracket.
- ☑ Repeat the procedure to release the adhesive underneath the left end of the home button control board.

### Step 3




- Lift and remove the home button control board up off the home button mounting bracket.

### Step 4



- Use the flat edge of a spudger to scrape the old adhesive off the bottom right corner of the front panel assembly.

 If necessary, gently peel the old adhesive with a pair of tweezers.

## Step 5



- Gently place the home button control board on top of the home button mounting bracket.
- ⓘ Make sure the home button control board is lined up with the bottom of the home button mounting bracket.

## Step 6



- Insert the two 2.1 mm Phillips #00 Phillips screws back into the home button control board to secure it against the home button mounting bracket.

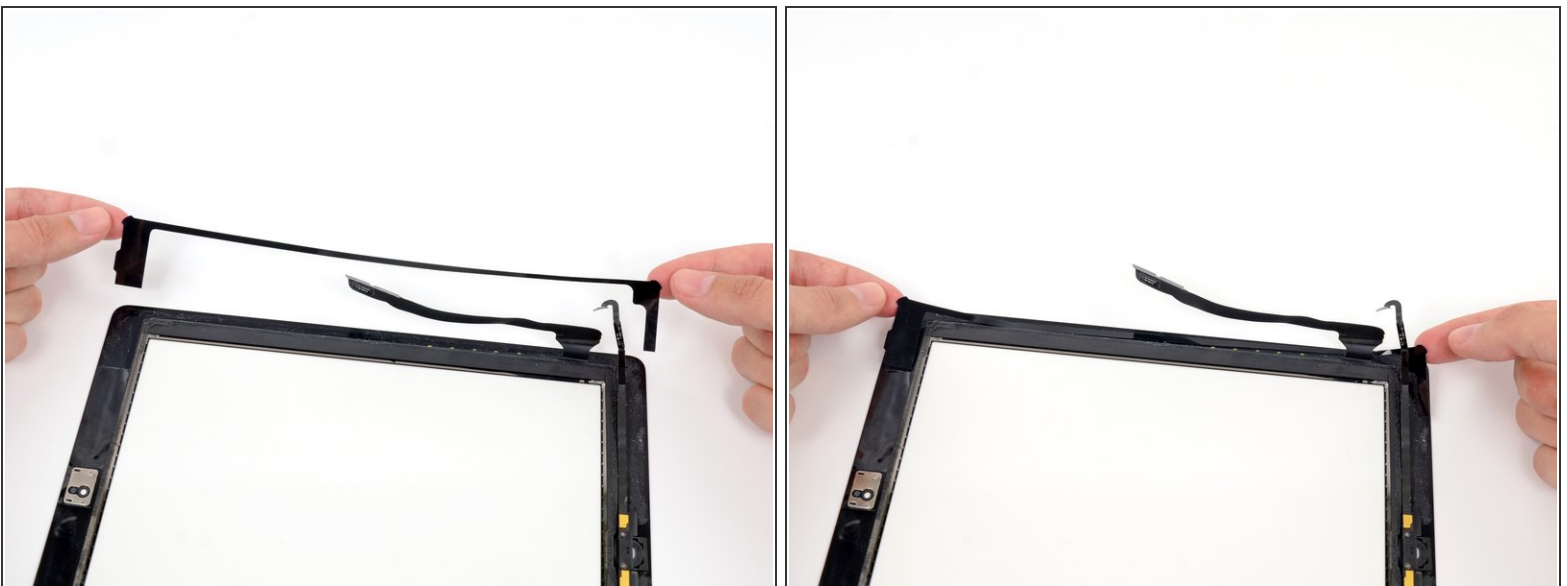


## Step 7 — Adhesive Strips (Existing Panel)



- In the following steps, you will be placing the remaining pieces of adhesive on the front panel.
- **Do not peel the clear backing off the strips just yet.**
- Place the bridge shaped adhesive strip between the top edge of the inner frame of the front panel and the camera mounting bracket.
- Smooth the strip down from the center out, taking care to not trap any air bubbles between the strip and the front panel.


## Step 8



- Place the elongated **C** shaped adhesive strip on the right side of the front panel.

## Step 9



-  It is recommended to lift the home button ribbon cable aside while placing the next adhesive strip.
- Place the straight, medium length adhesive strip on the bottom right side of the front panel, underneath the home button ribbon cable.

## Step 10



- Place the tabbed rectangular adhesive strip on the bottom right side of the front panel.



## Step 11



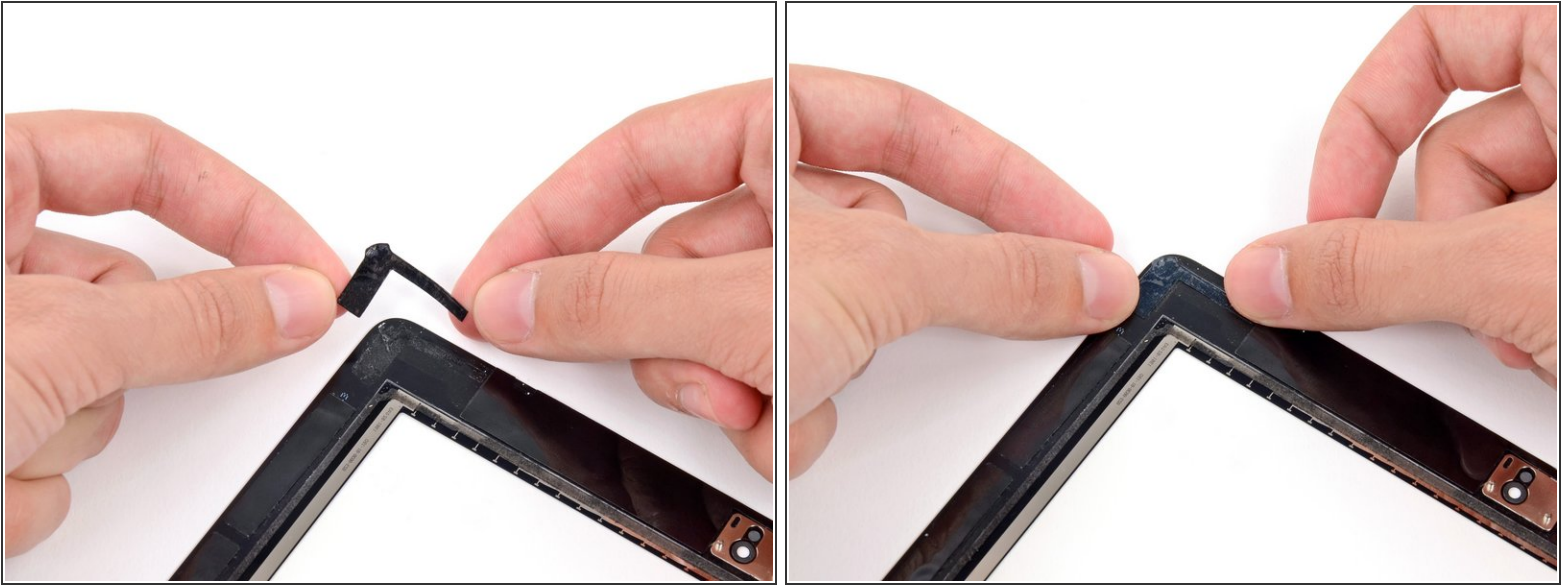
- Place the long L-shaped adhesive strip on the bottom left corner of the front panel.

## Step 12



- Place the short rectangular shaped adhesive strip on the top left side of the front panel.

## Step 13



- Place the last, short L-shaped adhesive strip on the top left corner of the front panel.

## Step 14



- Use a pair of tweezers to peel the clear backing up off the adhesive strip directly underneath the home button ribbon cable.
- Lay the home button ribbon cable down on the adhesive strip and smooth the cable down from the center out, taking care to not trap any air bubbles between the strip and the front panel.

 **Do not peel the clear backing off the strips just yet.**

## Step 15



- Use a dry microfiber cloth to clean the LCD and inside of the front panel glass. You may want to use canned air or an air compressor to blow away and dust.
- Use a pair of tweezers to peel the clear backing up off each adhesive strip.
- ⓘ Close the front panel down onto the iPad, careful to place it within the plastic bezel, and careful not to get any dirt or fingerprints between the glass and LCD.
- ⓘ To ensure a good seal, place the iPad face down on a padded envelope or cloth and pile a couple of books above it to weigh the screen down. Leave it like this for a few hours before using.

To reassemble your device, follow these instructions in reverse order.