



MSI GS70 Hard Drive Replacement

This guide will show you how to repair or...

Written By: Matthew Tasker



INTRODUCTION

This guide will show you how to repair or replace the Hard Drive for the MSI GS70. Replacement of the Hard Drive is fairly easy as you will only need a JIS #1 Screwdriver and a magnetic mat (Optional, but recommended)



TOOLS:

- [Magnetic Project Mat](#) (1)
- [JIS #1](#) (1)



PARTS:

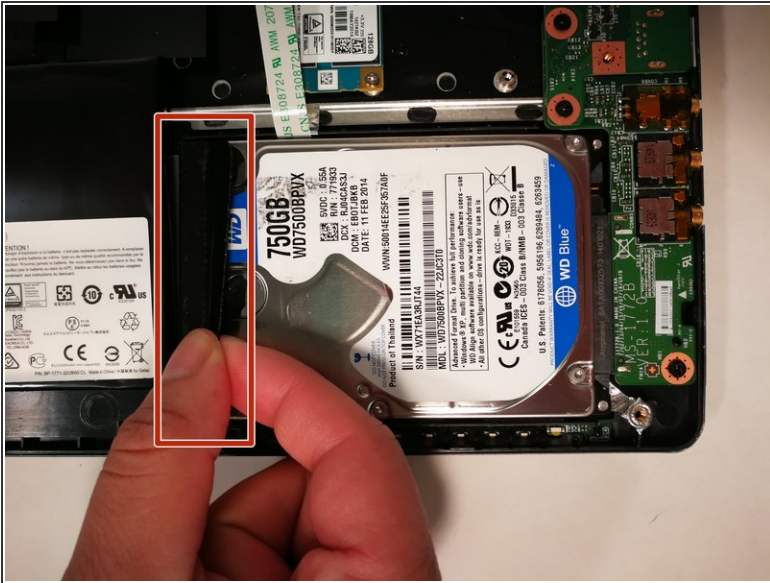
- [Crucial MX500 1 TB SSD](#) (1)
- [Crucial MX500 250 GB SSD](#) (1)
- [Crucial MX500 500 GB SSD](#) (1)
- [Crucial MX500 2 TB SSD](#) (1)

Step 1 — Remove the Backplate



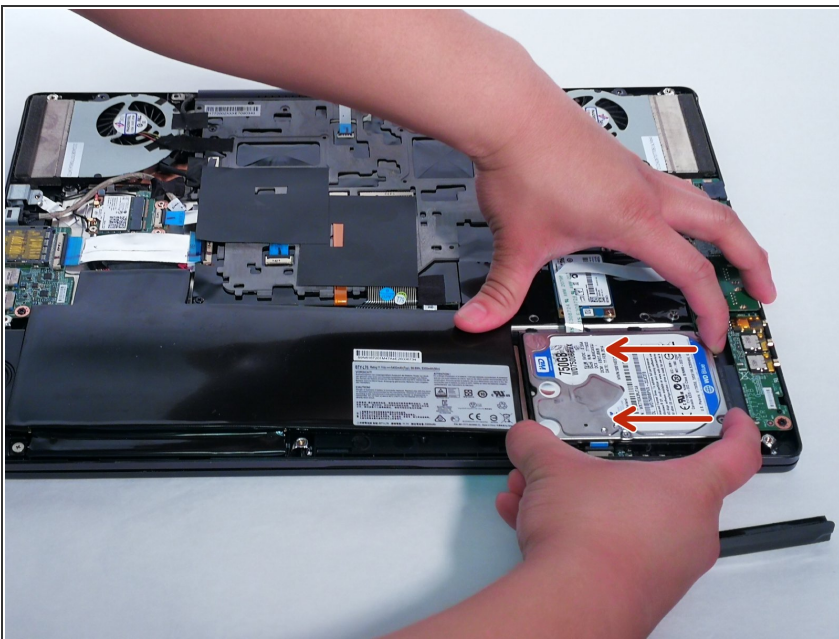
- Using your JIS #1, locate and remove all screws from the backplate.
- When all the screws are removed, proceed to remove the backplate. The hard drive will be located right next to the battery.

Step 2 — Remove the Hard Drive Spacer



- Locate the black rubber spacer
- Remove the spacer by gently pulling the flap

Step 3 — Disconnect your Hard Drive



- With two hands slide the Hard Drive to the left.

Step 4 — Remove the Hard Drive



- Carefully lift up the Hard Drive using your Spudger.
- Next, pull up your hard drive from the battery end and proceed to remove the hard drive

To reassemble your device, follow these instructions in reverse order.