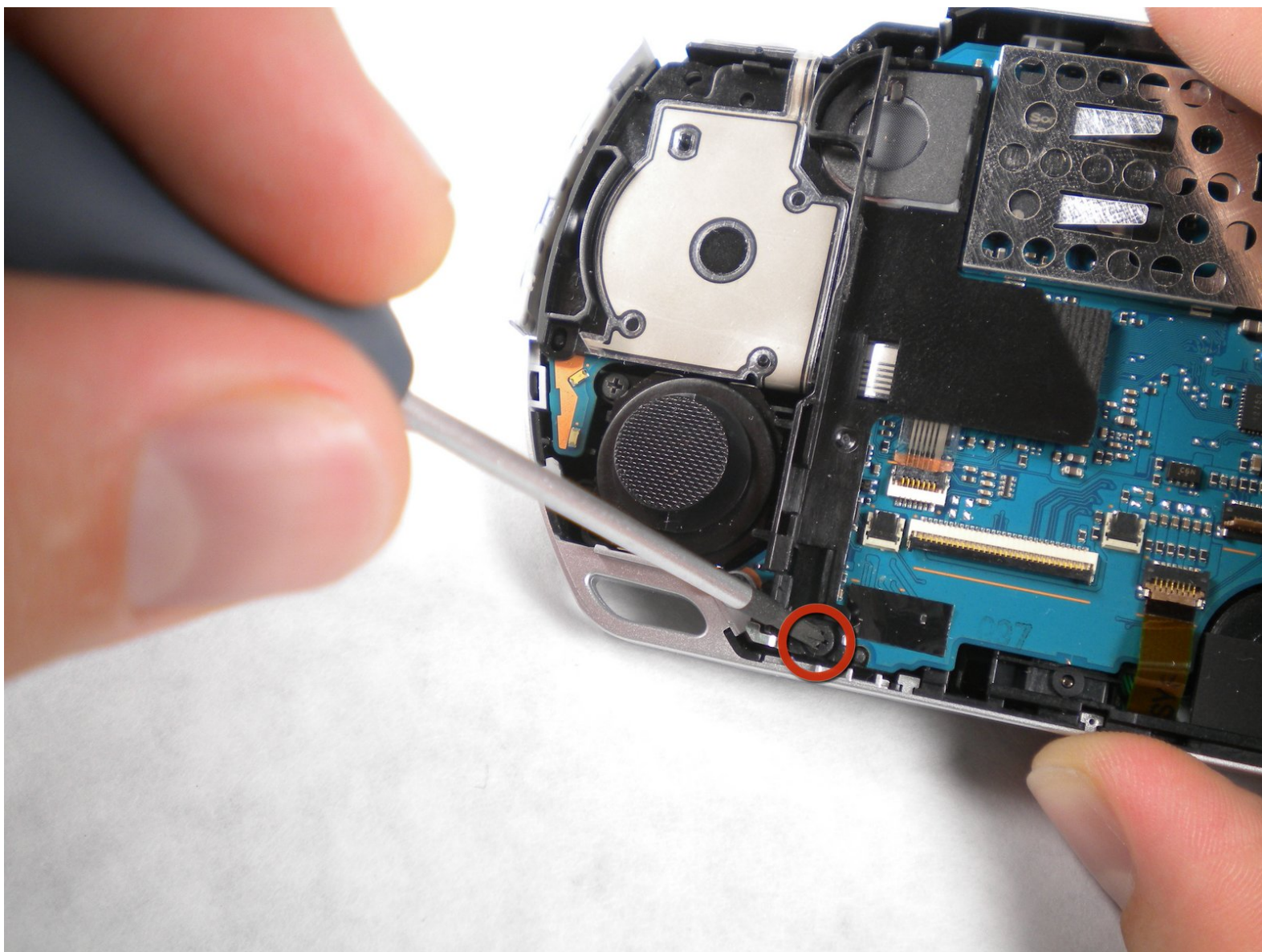




PSP 300x Analog Stick Replacement

Guide for removing the Analog stick in a Sony...

Written By: mbnewsom



INTRODUCTION

Guide for removing the Analog stick in a Sony PSP-3000



TOOLS:

- [Phillips #00 Screwdriver](#) (1)
- [Spudger](#) (1)



PARTS:

- [Sony PSP 3000 Analog Stick](#) (1)
- [Sony PSP 3000 Left Button Contact Cable](#) (1)

Step 1 — Battery



- Place the PSP face down and locate the battery cover on the left side of the device.
- Lift and remove the battery cover to reveal the battery.
- Remove the battery.

Step 2 — Casing



- Peel back the warranty sticker that is behind the battery with a spudger or your fingernail.

Step 3



- Unscrew all four screws from the back of the PSP with the Phillips #00 Screwdriver.
 - Two are located behind the battery's warranty sticker.
 - Two are located on the right side of the PSP.

Step 4



- Next, unscrew the two screws located at the top of the PSP.

Step 5



- Then, remove the single screw from the bottom edge of the PSP (which is positioned next to the barcode).

Step 6



- Slide the spudger in between the outer casing of the PSP, beginning at the "R" shoulder button, and gently pry off the casing.
- Remove the front casing completely.

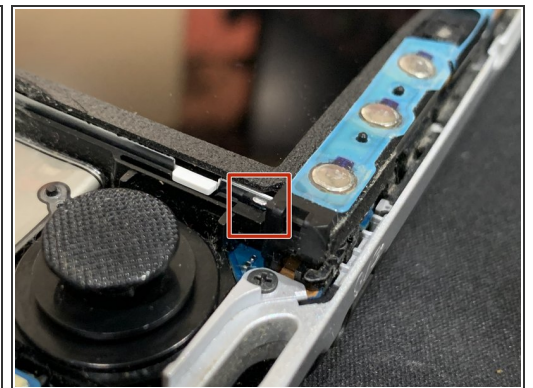
Step 7 — LCD Screen



- Push the homebar to the right to release the tab located on the right side of the LCD screen.

⚠ DO NOT completely remove the homebar, as it is still connected by ribbon cables.

Step 8

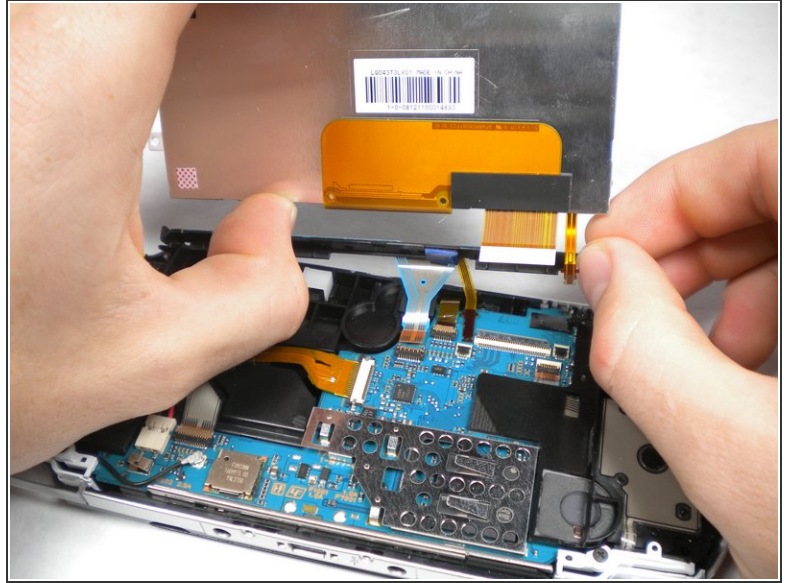
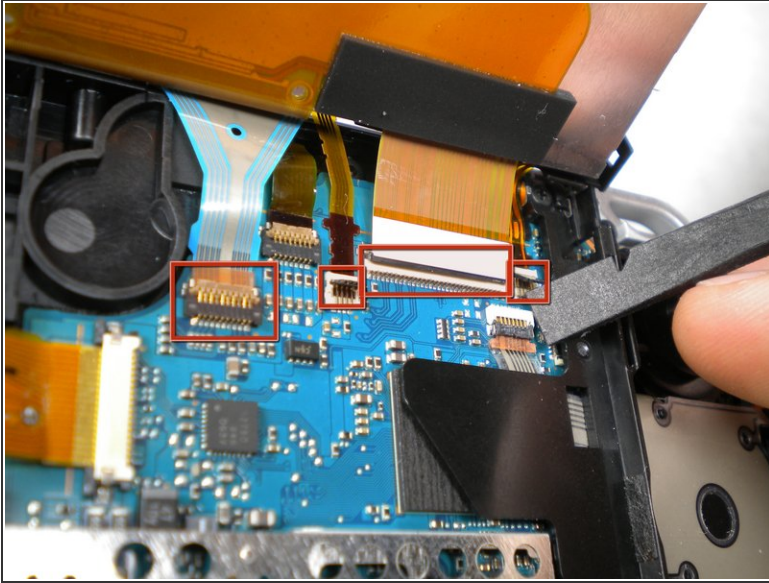


- Slowly lift the LCD screen off the PSP starting at the top edge corner.

⚠ Again, the LCD screen is attached by ribbon cables, so do not remove it completely.

ⓘ Orientation of PSP is flipped in photo.

Step 9



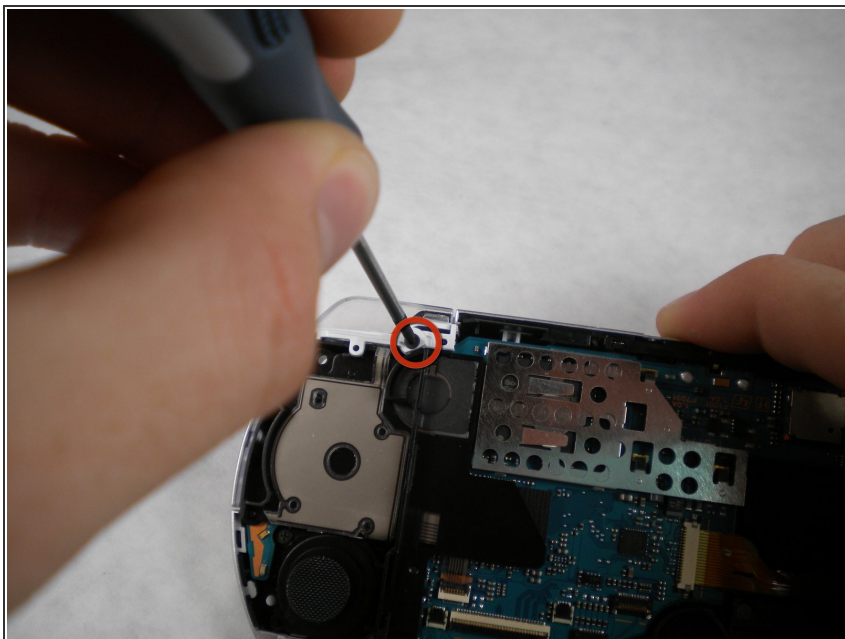
- Flip the small brown locks on the four ribbon cable connectors up using a spudger or fingernail.
- Pull all four ribbon cables out.
- Now remove the LCD screen and homebar from the PSP.

Step 10



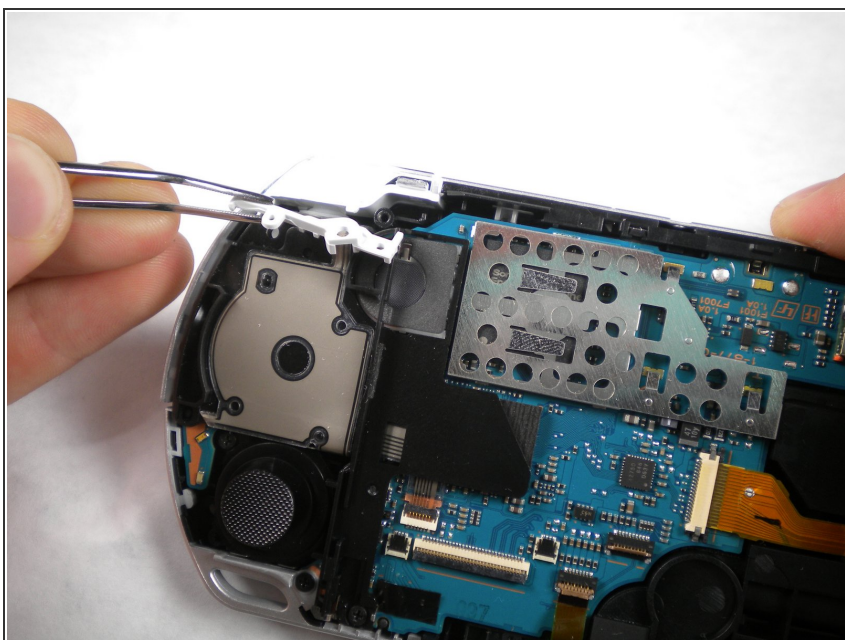
- Remove the metal tab that lies above the LCD screen.
- ☑ Upon reassembly, make note that the stamped lettering faces down, and the large tab fits just above the motherboard to the right hand side of the left trigger.

Step 11 — Trigger Buttons



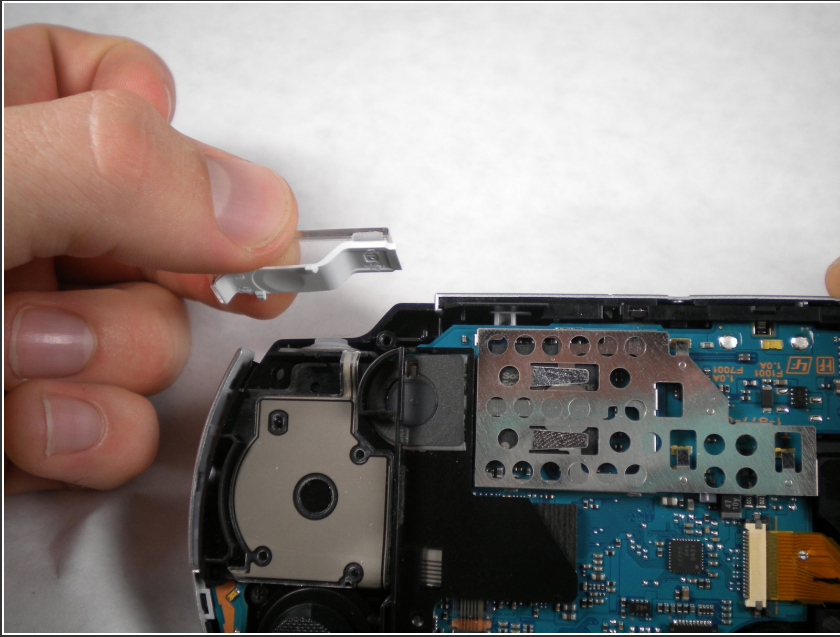
- Remove the screw securing 'L' trigger to the PSP.

Step 12



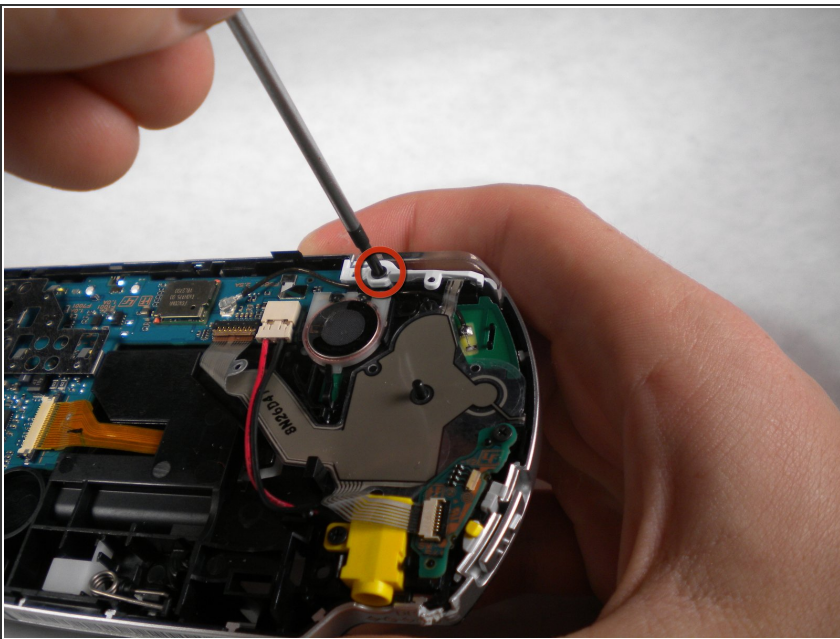
- Remove the white plastic piece that holds the 'L' trigger in place.

Step 13



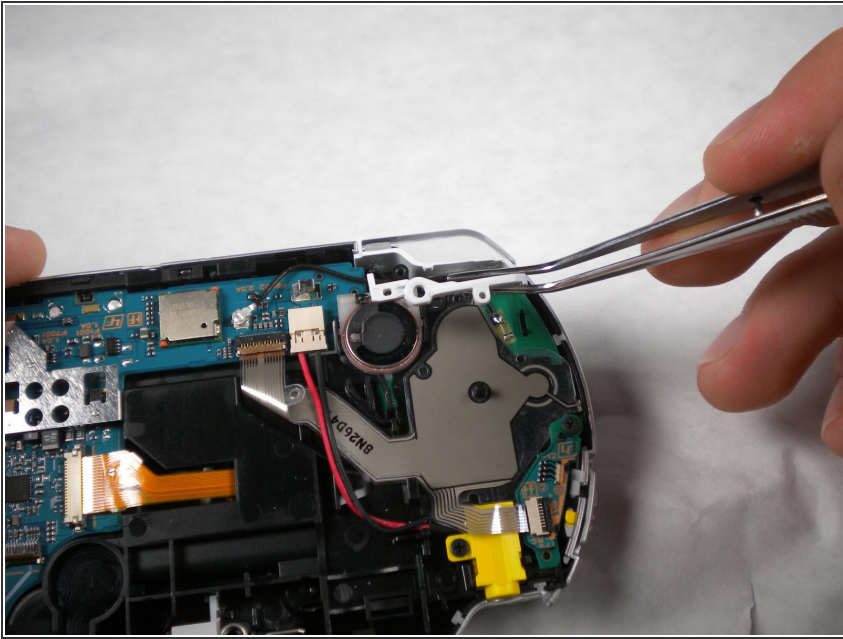
- Remove the 'L' trigger from the PSP.

Step 14



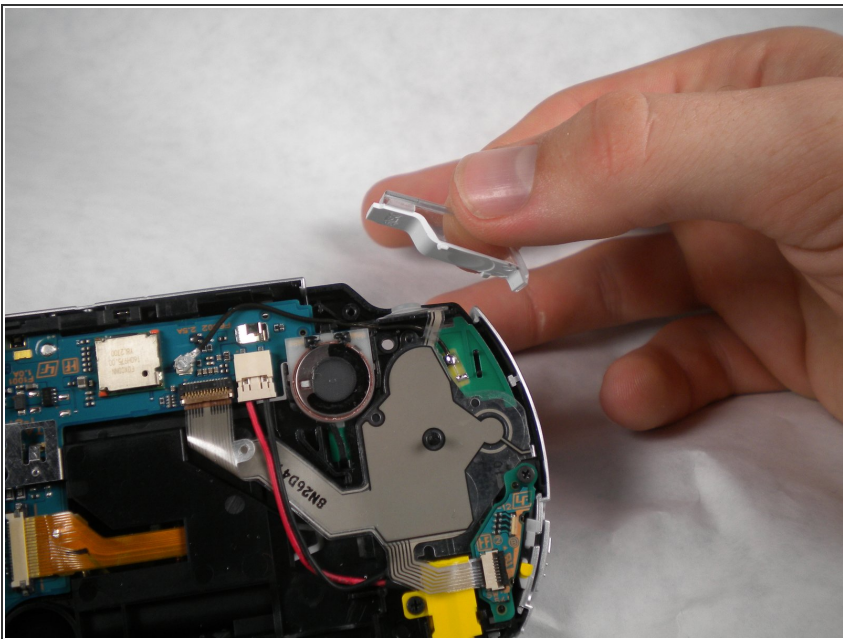
- Remove the screw securing the 'R' trigger.

Step 15



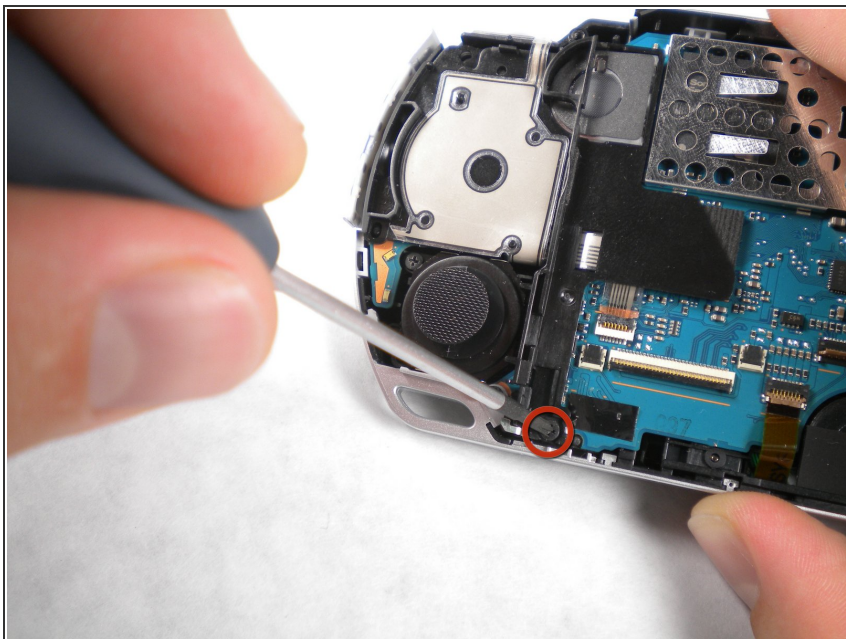
- Remove the white plastic piece that holds the 'R' trigger in place.

Step 16



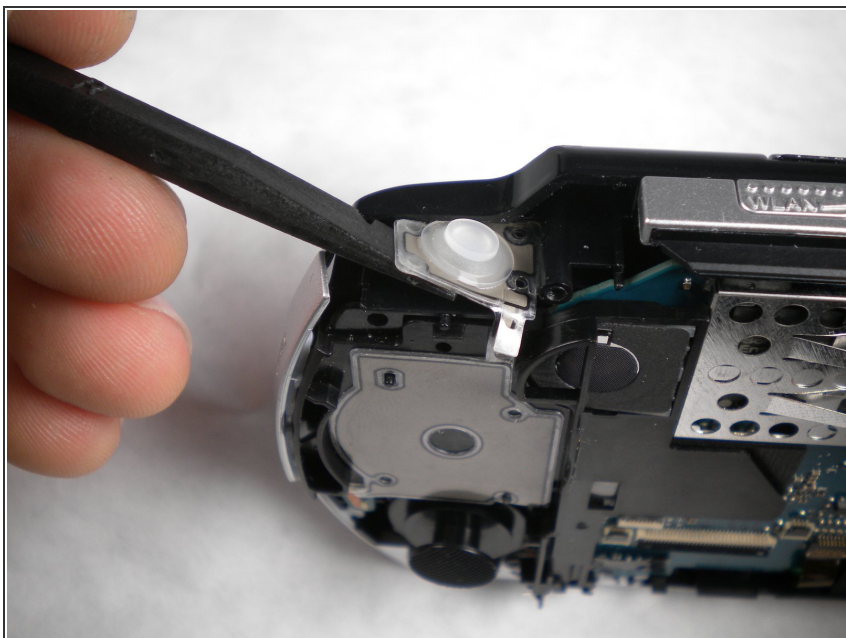
- Remove the 'R' trigger from the PSP.

Step 17 — Analog Stick



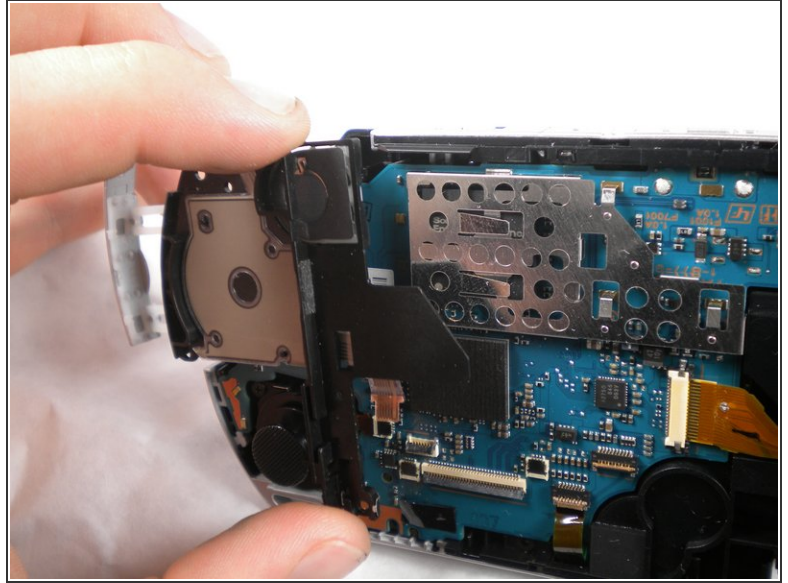
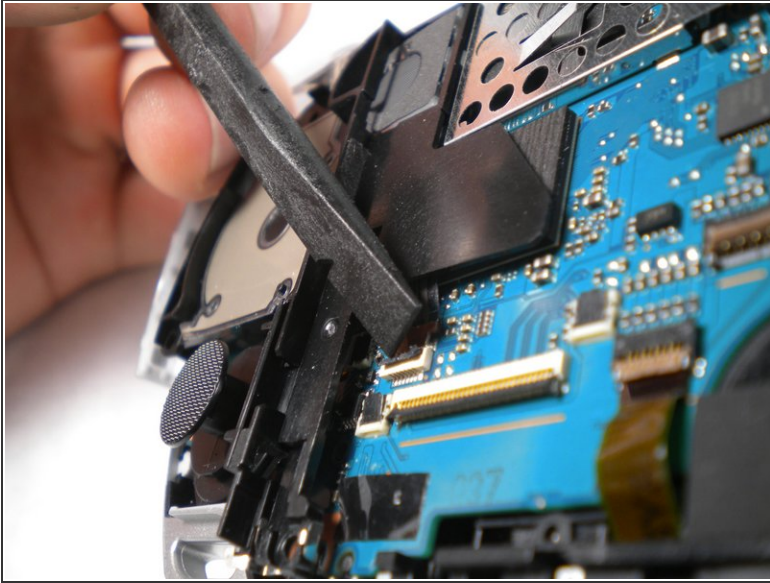
- Remove the screw from the bottom left edge of the PSP.

Step 18



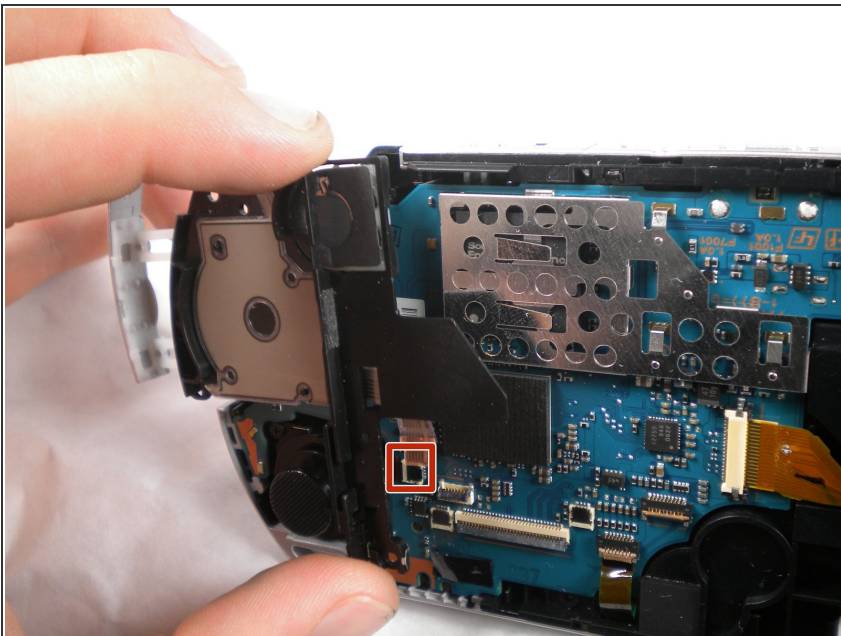
- Being careful not to break the ribbon cable, use the spudger to peel the adhesive button of the the 'L' trigger off the PSP.

Step 19



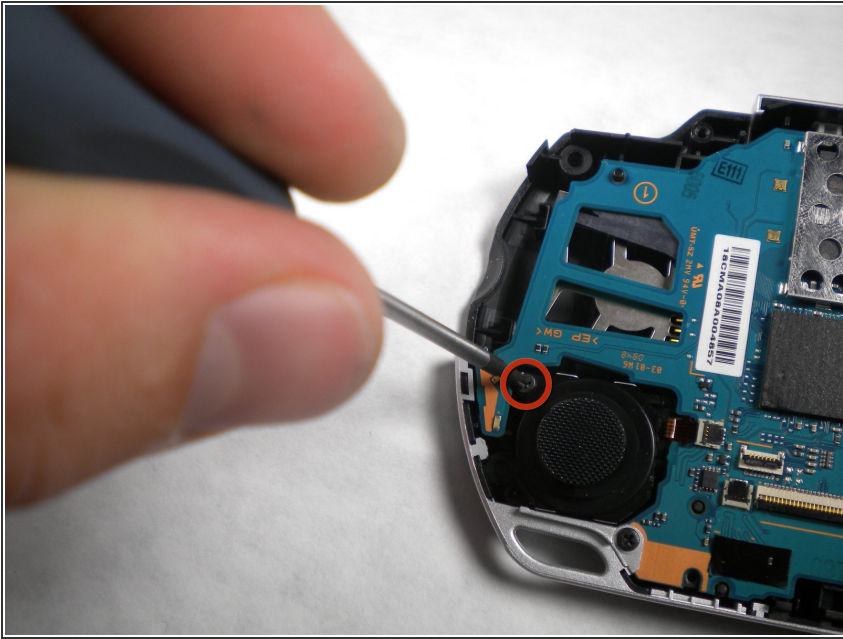
- Using a fingernail or spudger, flip up the retaining bracket on the d-pad and 'L' trigger ribbon cable.
- Lift the black plastic bracket along with the d-pad contact pad, disconnecting the ribbon cable as you lift.

Step 20



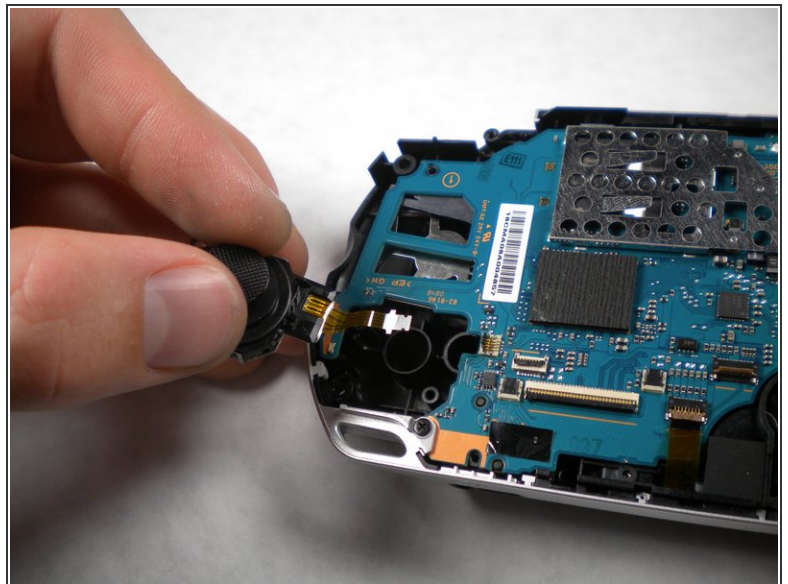
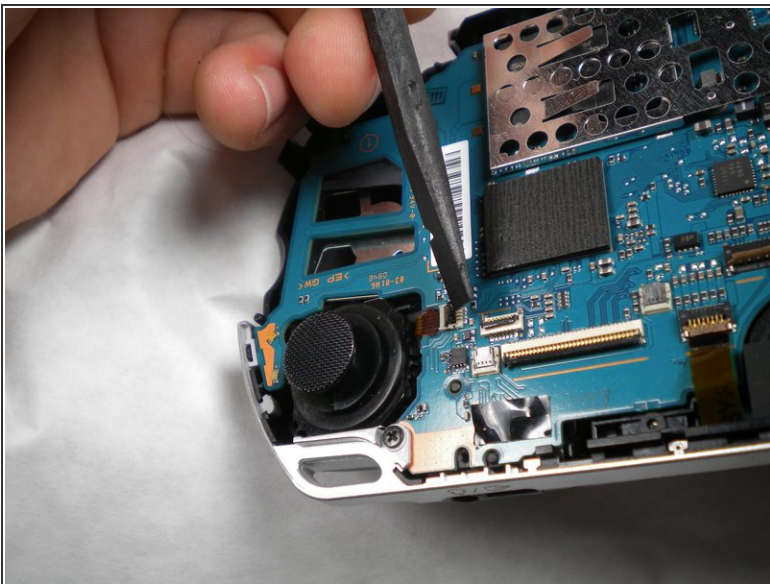
- Remove the cable from the connector and remove the entire black piece from the PSP.

Step 21



- Remove the screw holding the analog stick in place.

Step 22



- Flip up the lock on the analog sticks ribbon cable.
- Remove the analog stick from the PSP.

To reassemble your device, follow these instructions in reverse order.