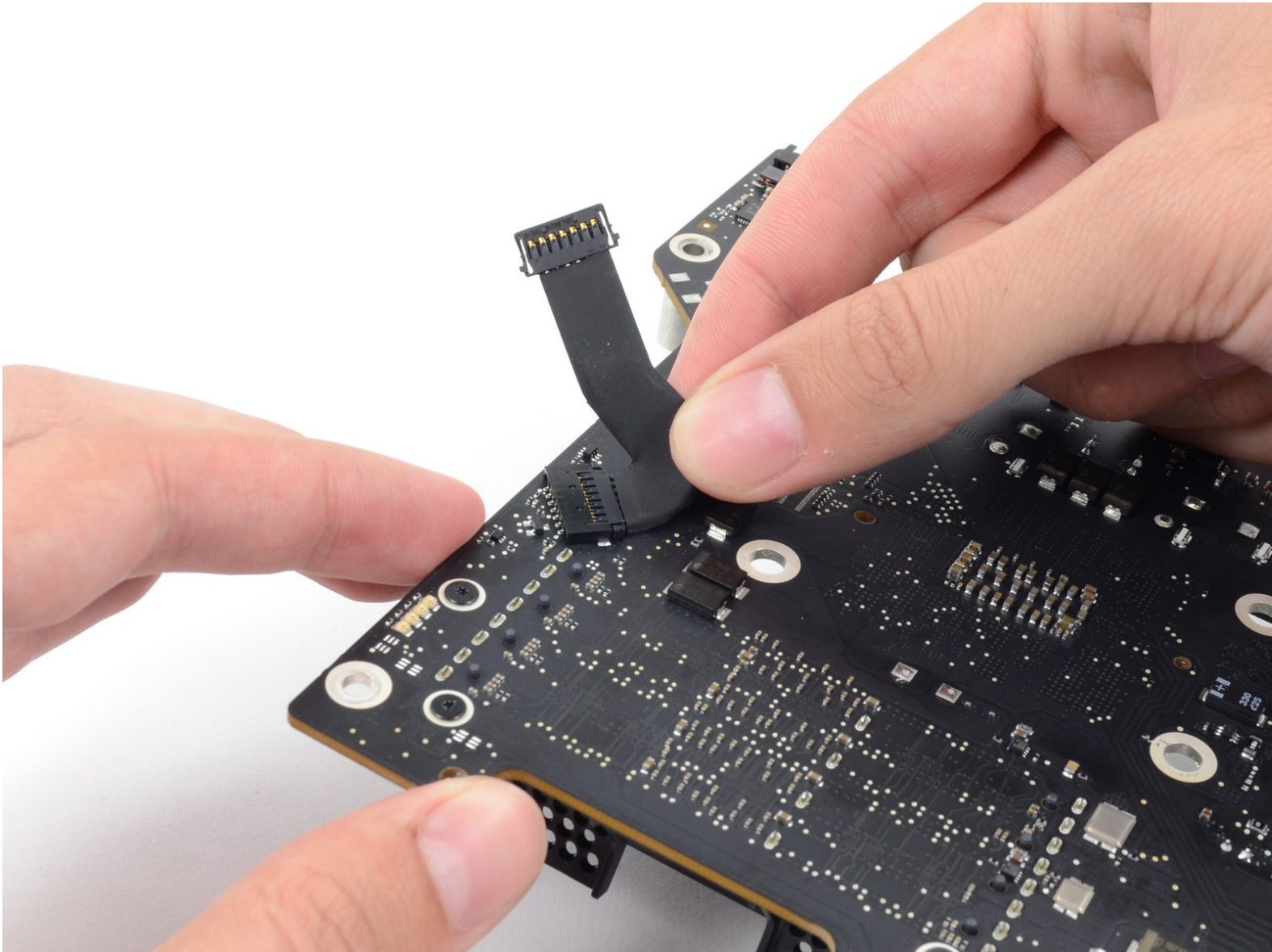




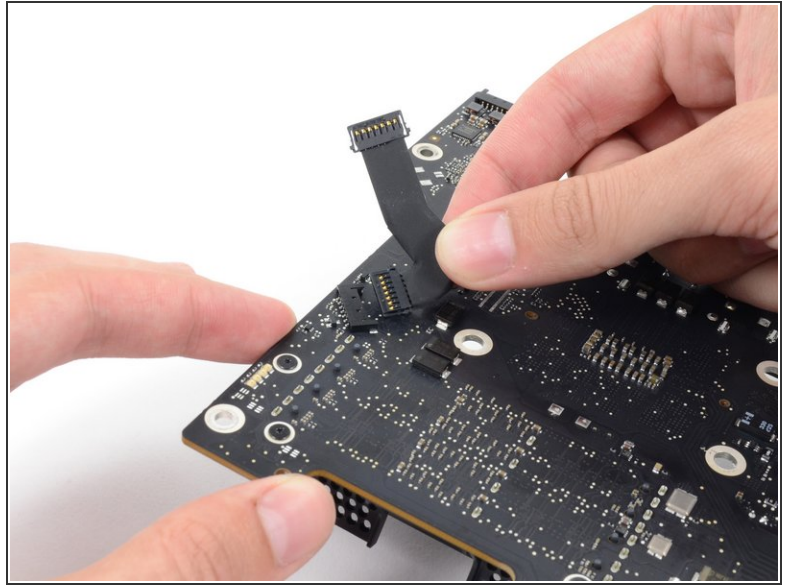
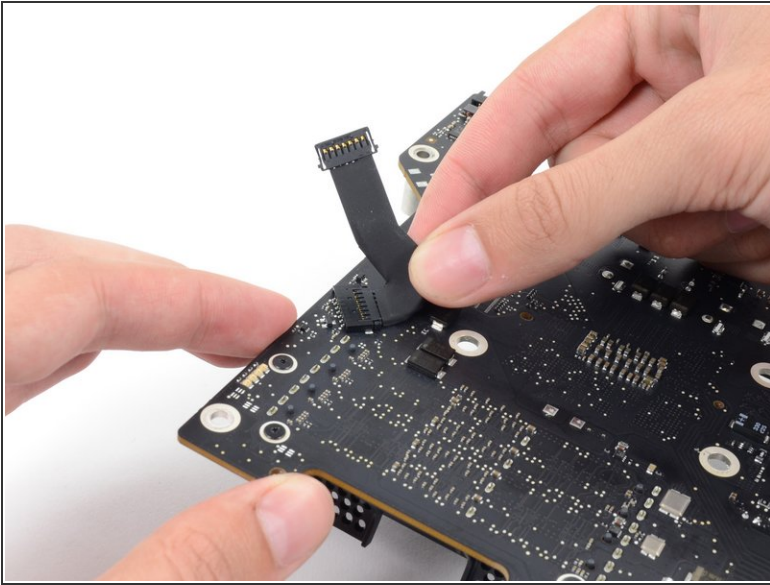
# iMac Intel 27" EMC 2546 Power Supply Cable Replacement

prerequisite for logic board

Written By: Andrew Optimus Goldheart



## Step 1 — Power Supply Cable



- Remove the power supply cable from its connector by pulling it parallel to the logic board.
- ✦ During reassembly of the logic board, pay attention to the position of the I/O connectors. When the board is back in the case, insert a USB or Thunderbolt cable into one of the connectors to align it perfectly.

To reassemble your device, follow these instructions in reverse order.