



# PlayStation 3 Slim Teardown

Written By: Vinicius Rodrigues Bellini



## Step 1 — Console Case



- On the outside of the PS3 slim we find a matte black finish and a build that is noticeably not as wide as the original Playstation 3.

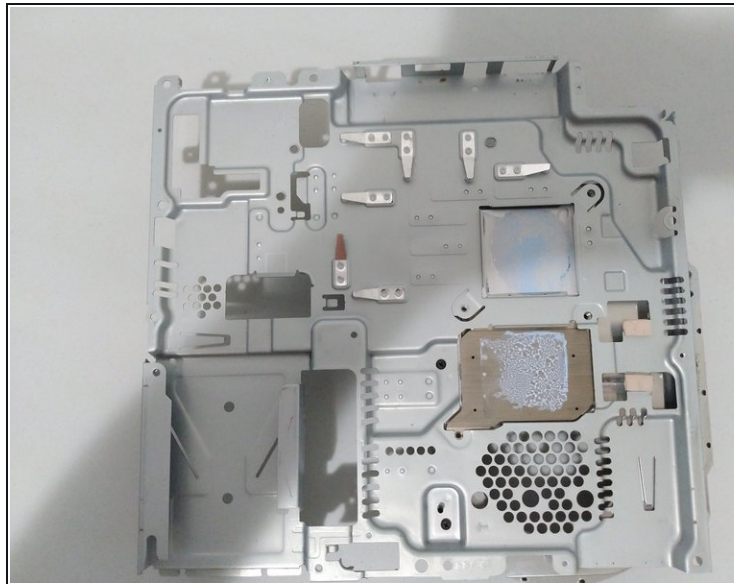
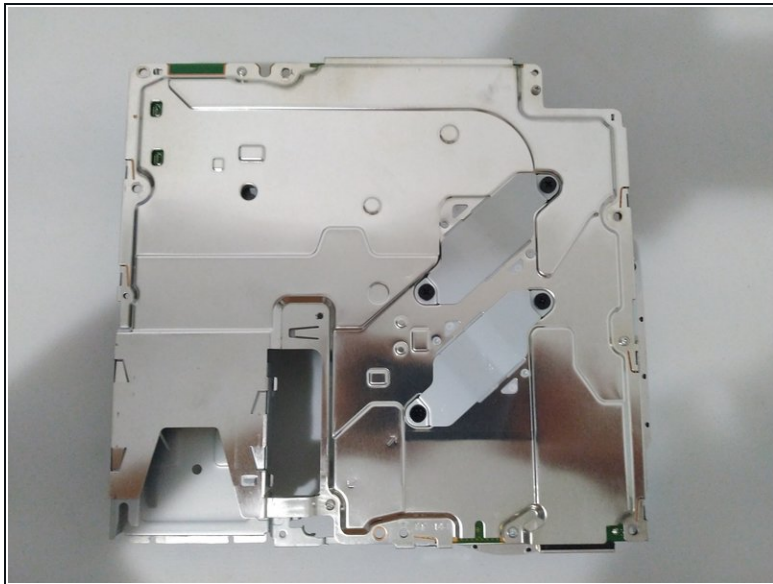
## Step 2 — Inside the console



- Insert wisdom here.

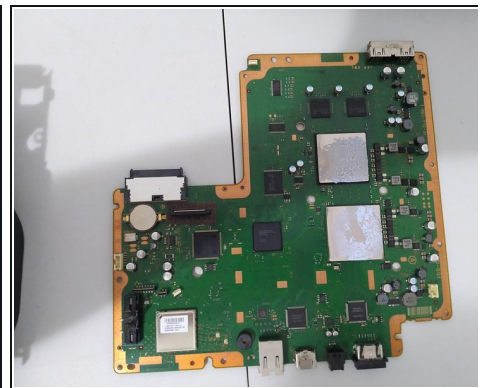
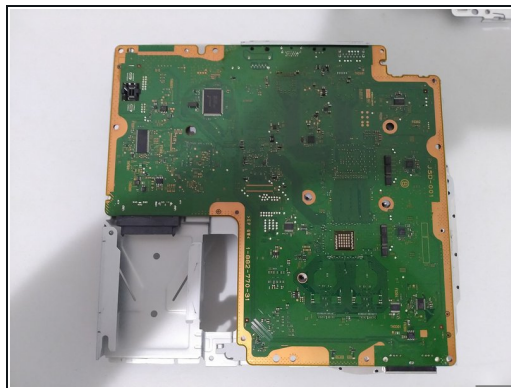
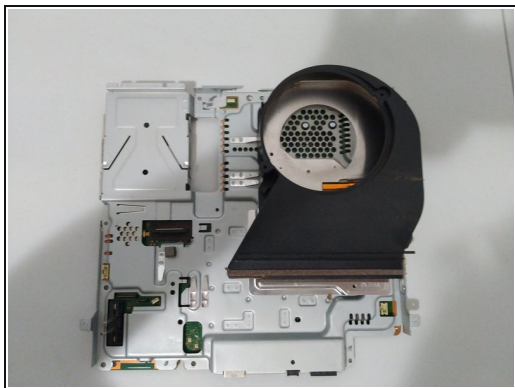


### Step 3 — Motherboard Shield



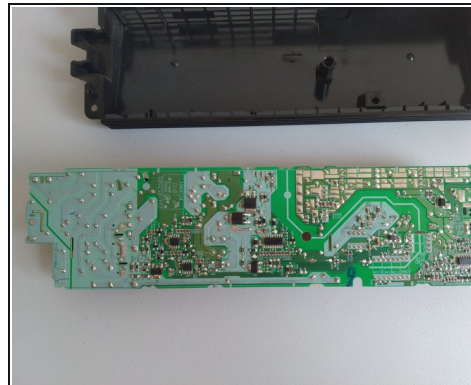
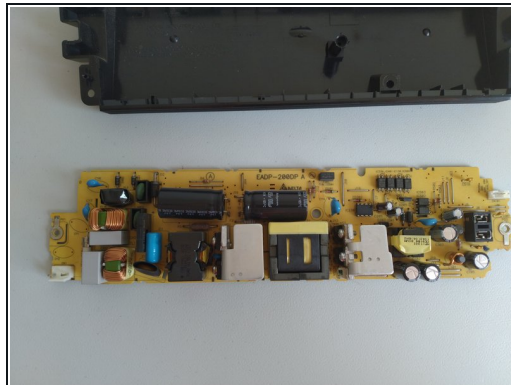
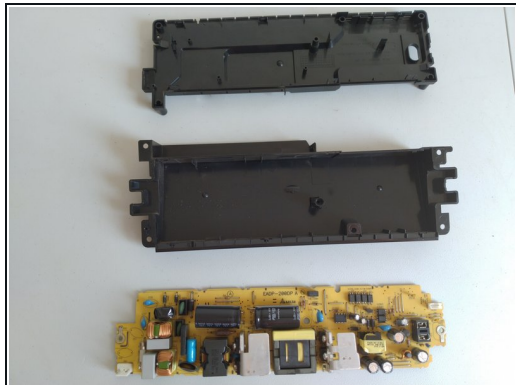
- Insert wisdom here.

### Step 4 — Mother board



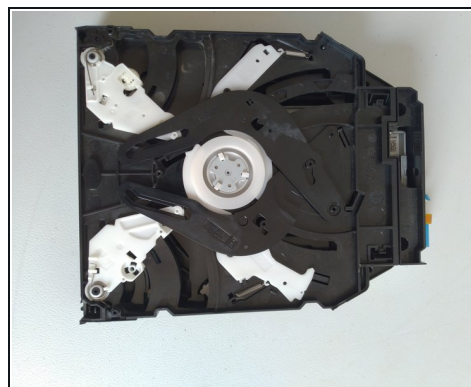
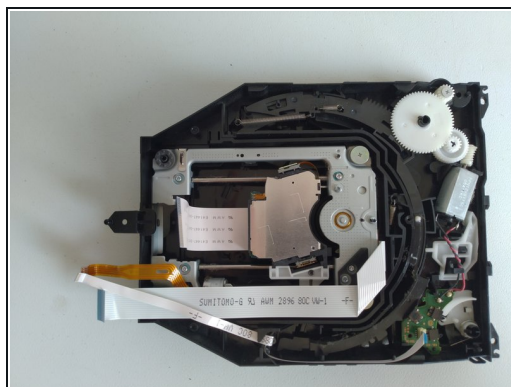
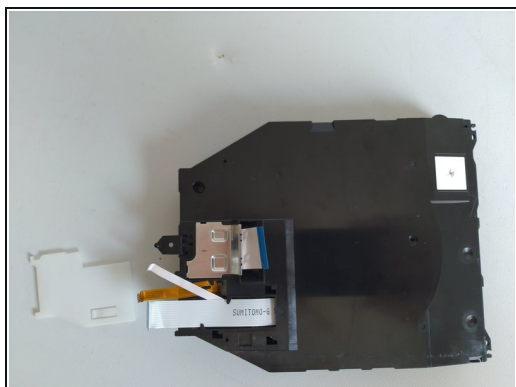
- Insert wisdom here.

## Step 5 — Power supply



- Insert wisdom here.

## Step 6 — Bluray Driver



- Insert wisdom here.

To reassemble your device, follow these instructions in reverse order.