



Sega Genesis II Controller Teardown

Written By: Tay





TOOLS:

Phillips #00 Screwdriver (1)

Spudger (1)

Step 1 — Disassembling the handle



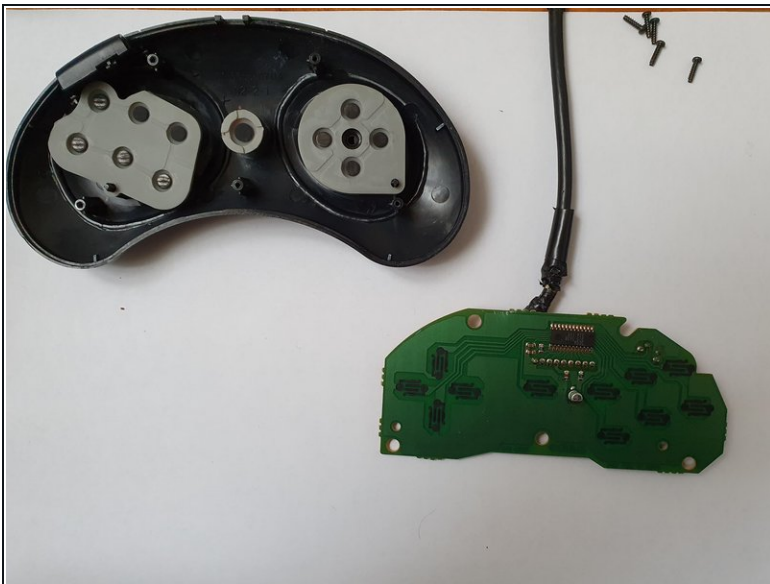
- Flip the controller upside down.
- Using a Phillips #00 screwdriver, remove the five screws holding the controller back cover in place.

Step 2



- Then remove the back cover of the controller, which gives you access to the motherboard of the controller.
- ⓘ Carefully put back the 5 screws from step 1 as well as the back cover of the controller

Step 3 — Disassembling the motherboard



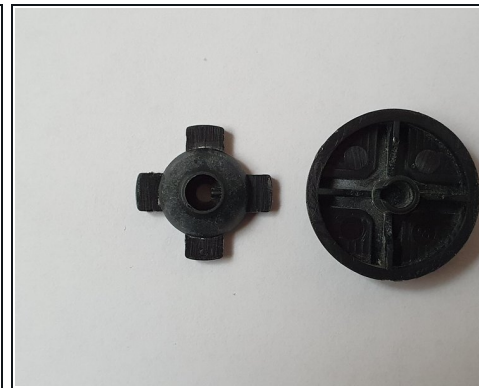
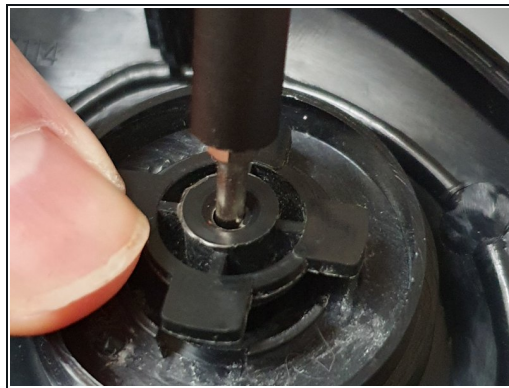
- Remove the motherboard from the controller body, after releasing the rubber part that holds the cable in the controller body
- ⓘ This gives you access to the button contact pads

Step 4 — Dismantling the buttons



- Remove the contact pads
- Then remove the 8 plastic buttons

Step 5 — Dismantling the Directional Pad



- In order to disassemble the directional cross, it is necessary to lever gently preferably with a plastic Spudger, under the 4 retaining tabs.
- Then, push in the central hole with a fine tool (here a screwdriver), in order to undo the assembly

⚠ For reassembly, be careful to put the corrector in front of the slot of the outer part!