



# MacBook Pro 13" Retina Display Early 2013

## Right Speaker Replacement

Replace the Right Speaker in your MacBook Pro 13" Retina Display Early 2013.

Written By: Sam Goldheart



# INTRODUCTION

Use this guide to replace the right speaker.



## TOOLS:

- [MacBook Pro and Air 5-Point Pentalobe Screwdriver](#) (1)
- [iFixit Opening Tools](#) (1)
- [Spudger](#) (1)
- [T5 Torx Screwdriver](#) (1)
- [T6 Torx Screwdriver](#) (1)
- [Tweezers](#) (1)



## PARTS:

- [MacBook Pro 13" Retina Right Speaker](#) (1)

## Step 1 — Lower Case



- Remove the following ten screws securing the lower case to the upper case:
  - Two 2.3 mm P5 Pentalobe screws
  - Eight 3.0 mm P5 Pentalobe screws
- ☑ Throughout this repair, [keep track of each screw](#) and make sure it goes back exactly where it came from to avoid damaging your device.

## Step 2



- Wedge your fingers between the upper case and the lower case.
- Gently pull the lower case away from the upper case.
- Remove the lower case and set it aside.

## Step 3



- ✦ During reassembly, gently push down the center of the lower case to reattach the two plastic clips.
  - The lower case is connected to the upper case at the center, with two plastic clips.

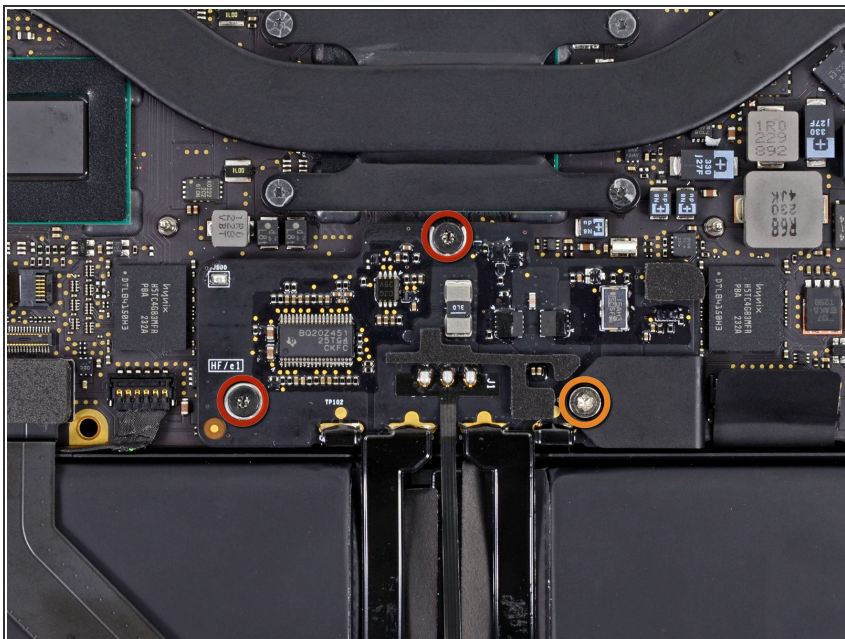
## Step 4 — Battery Connector



- Remove the plastic cover adhered to the battery contact board.

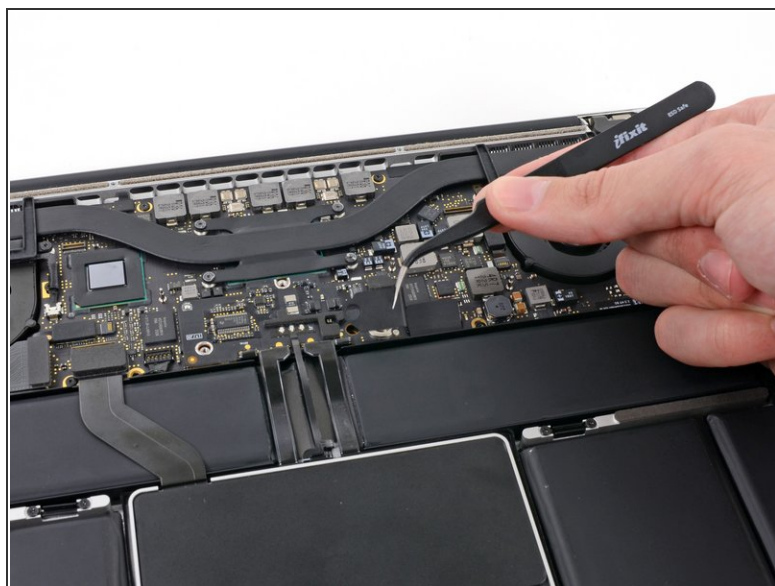


## Step 5



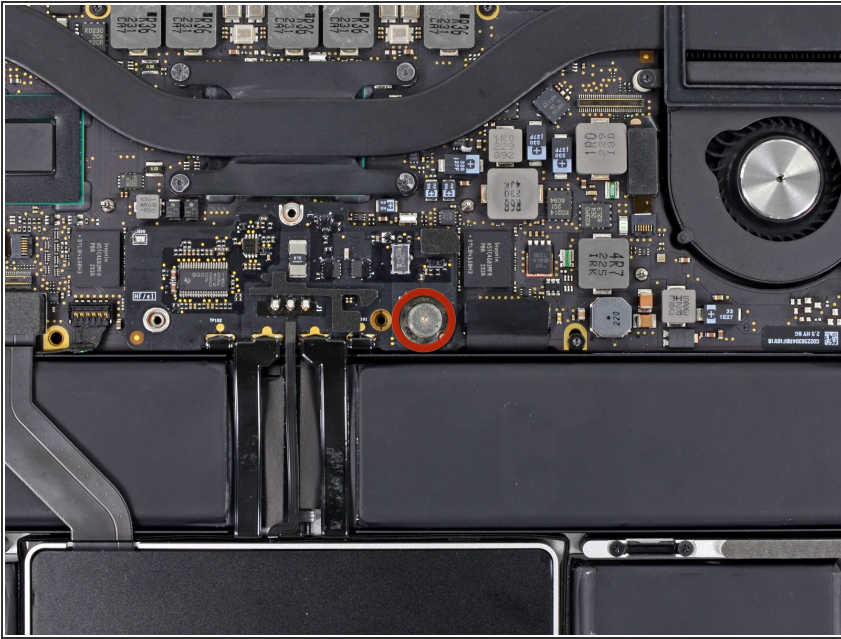
- Remove the following screws securing the battery connector board to the logic board:
  - Two 2.8 mm T6 Torx screws
  - One 7.0 mm T6 Torx shouldered screw

## Step 6



- Use tweezers to remove the small plastic cover located near the bottom right of the battery connector board.

## Step 7




- Remove the wide head 6.4 mm T6 Torx screw securing the battery connector to the logic board assembly.

## Step 8



- Carefully lift the battery connector board up off the logic board.
- It is recommended to bend the battery cables just slightly, to keep the board suspended up above the logic board and out of the way.

 Do not fold the board completely over, or crease the cables, as this may damage the battery.

This document was generated on 2021-06-02 06:45:07 PM (MST).

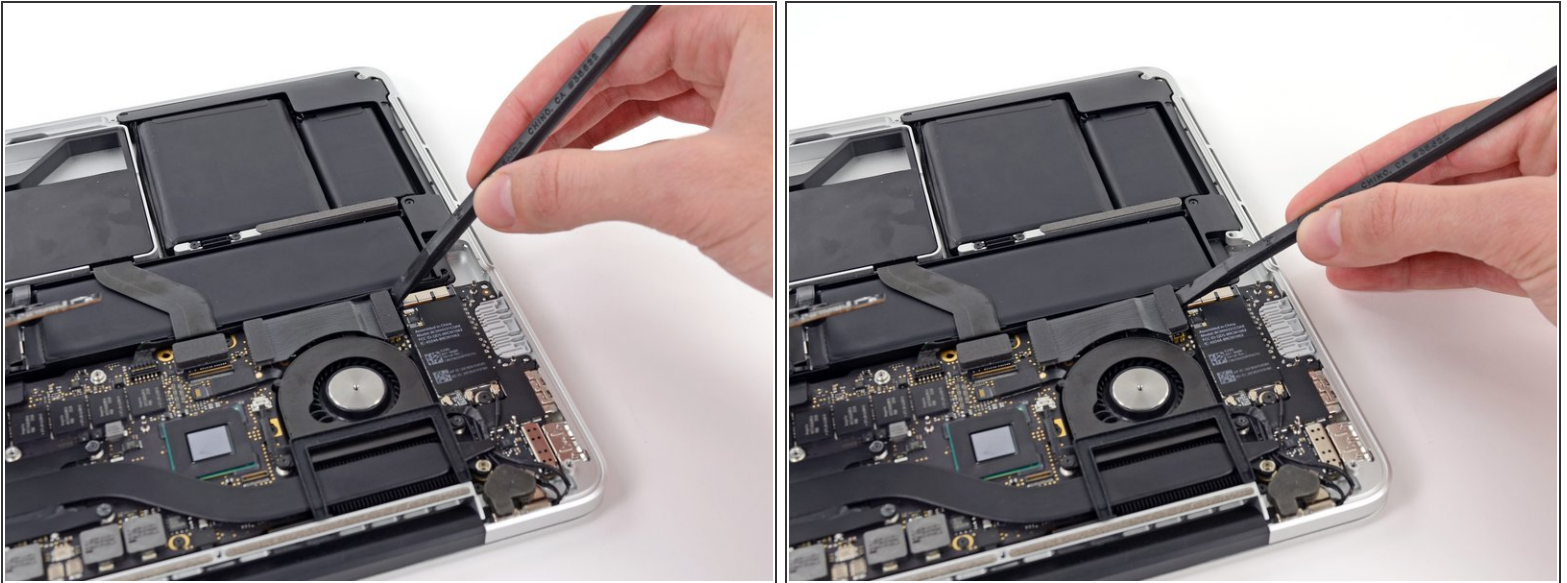


## Step 9 — Battery Contact Board




- Grasp the Interposer with tweezers.
  - ❗ An interposer is the name for an interface that links one electrical connection to another. In this repair, it is the board connecting the battery to logic board.
- Lift the Interposer off the logic board and remove it.
  - ⚠ Removing this board will ensure that the battery remains disconnected throughout your repair, preventing your computer from accidentally powering on. It's also a good idea to take it out so it doesn't fall out unexpectedly.

## Step 10 — I/O Board Data Cable



- Use the flat end of a spudger to pry the right side of the I/O board data cable connector up off its socket on the I/O board.

 When prying the I/O board data cable connector from its socket, make sure to pry the connector itself and not the socket. Prying the socket may cause irreversible damage to the I/O board.



## Step 11



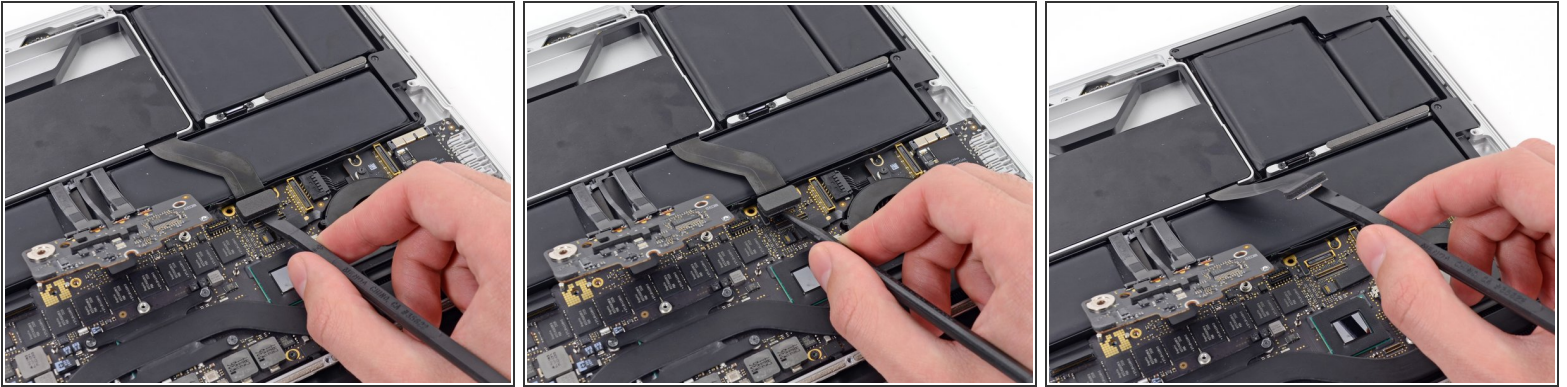
- Wedge the flat end of a spudger beneath the left side of the I/O board data cable connector.
- Gently twist the spudger to disconnect the I/O board data cable connector from its socket on the logic board.

## Step 12



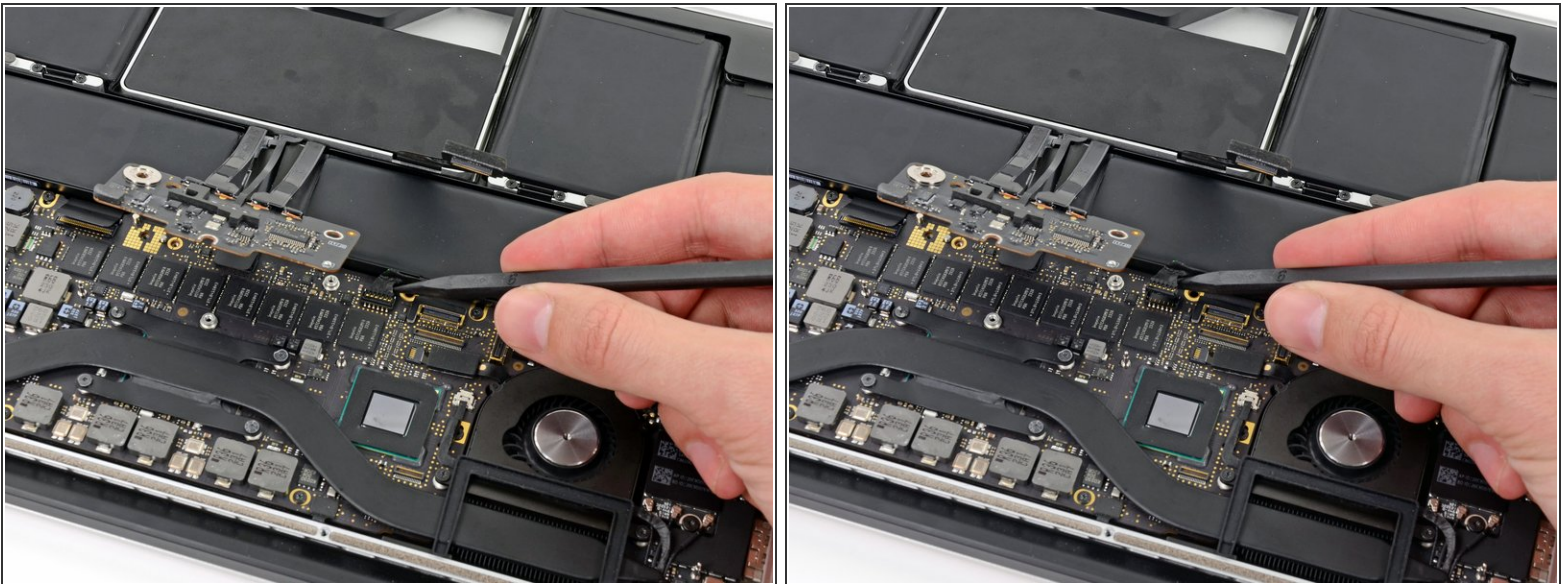
- Lift and remove the I/O board data cable from the MacBook Pro.

## Step 13 — Right Speaker



- Use the flat end of a spudger to pry the SSD cable connector up from its socket on the logic board.
- Move the SSD cable connector out of the way.

## Step 14

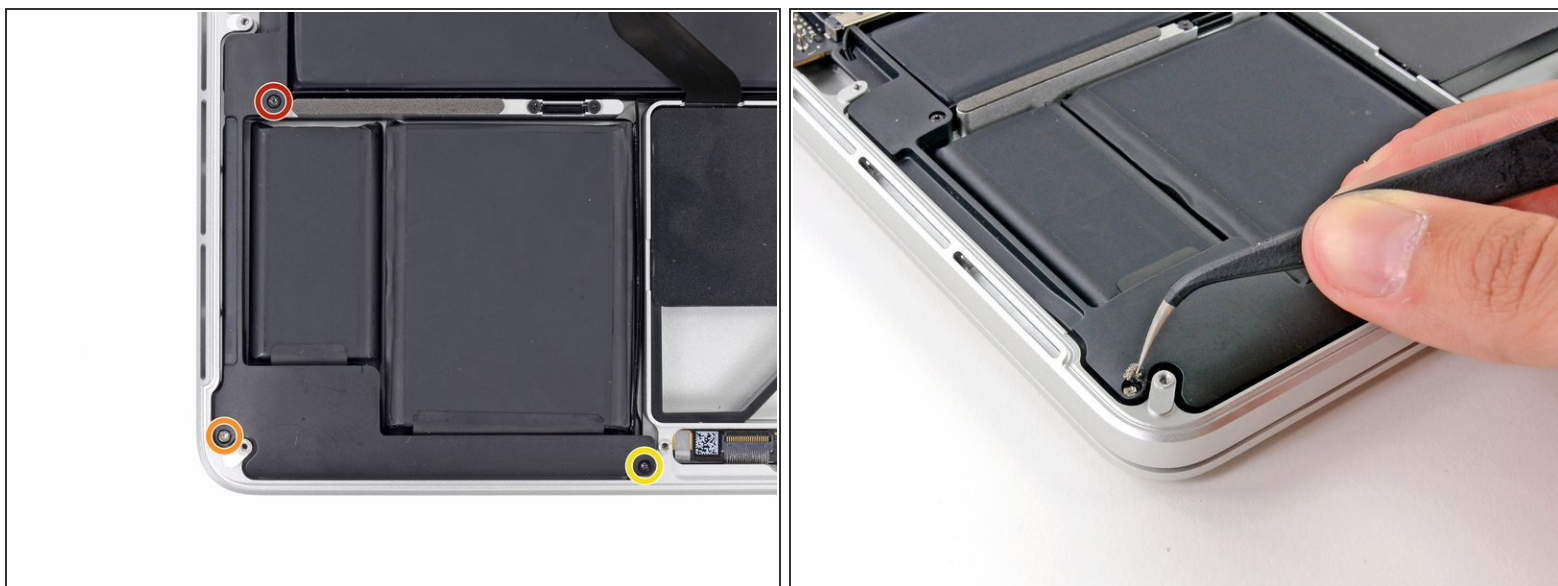


- Wedge the pointed end of a spudger beneath the right speaker cable connector.
- Gently pry the right speaker cable connector up off from its socket on the logic board.

⚠ Be sure you are prying up on the connector, **not** the socket itself.



## Step 15



- Use a T5 Torx driver to remove the following screws securing the right speaker to the upper case:
  - One black 6.8 mm screw
  - One silver 6.3 mm screw
  - One black 4.9 mm screw
- ⓘ The silver screw (in the corner) may be covered with a foam pad. If so, use your tweezers to peel it up and remove it.



## Step 16



- Lift and remove the right speaker out of the upper case.
- ☛ If necessary, de-route the right speaker cable from its channel in the upper case.

To reassemble your device, follow these instructions in reverse order.