



Motorola Moto G Play (2021) Battery Replacement

Follow this guide to remove and replace the...

Written By: Clay Eickemeyer



INTRODUCTION

Follow this guide to remove and replace the battery in your 2021 Motorola Moto G Play.

Before you begin, download the [Rescue and Smart Assistant](#) app to backup your device and diagnose whether your problem is software or hardware related.

This guide is for the **official Motorola replacement part**.

For your safety, discharge the battery below 25% before disassembling your device. This reduces the risk of fire if the battery is accidentally damaged during the repair. If your battery is swollen, [take appropriate precautions](#).

🔧 TOOLS:

[iOpener](#) (1)
[Suction Handle](#) (1)
[iFixit Opening Picks \(Set of 6\)](#) (1)
[Phillips #00 Screwdriver](#) (1)
[Spudger](#) (1)
[Isopropyl Alcohol](#) (1)
[Coffee Filters or a lint-free cloth](#) (1)

⚙️ PARTS:

[Moto G7 Power, G Power \(2021\), and G Play \(2021\) Battery](#) (1)
[Motorola Moto G Play \(2021\) Battery Adhesive](#) (1)

Step 1 — Heat the left edge



⚠️ **Discharge your battery to 25% or lower and power off your phone before you begin.**

- [Heat an iOpener](#) and apply it to the left edge of the cover for two minutes.
- ⓘ A hair dryer or [heat gun](#) may also be used, but be careful not to overheat the phone—the display and internal battery are both susceptible to heat damage.

Step 2 — Insert an opening pick



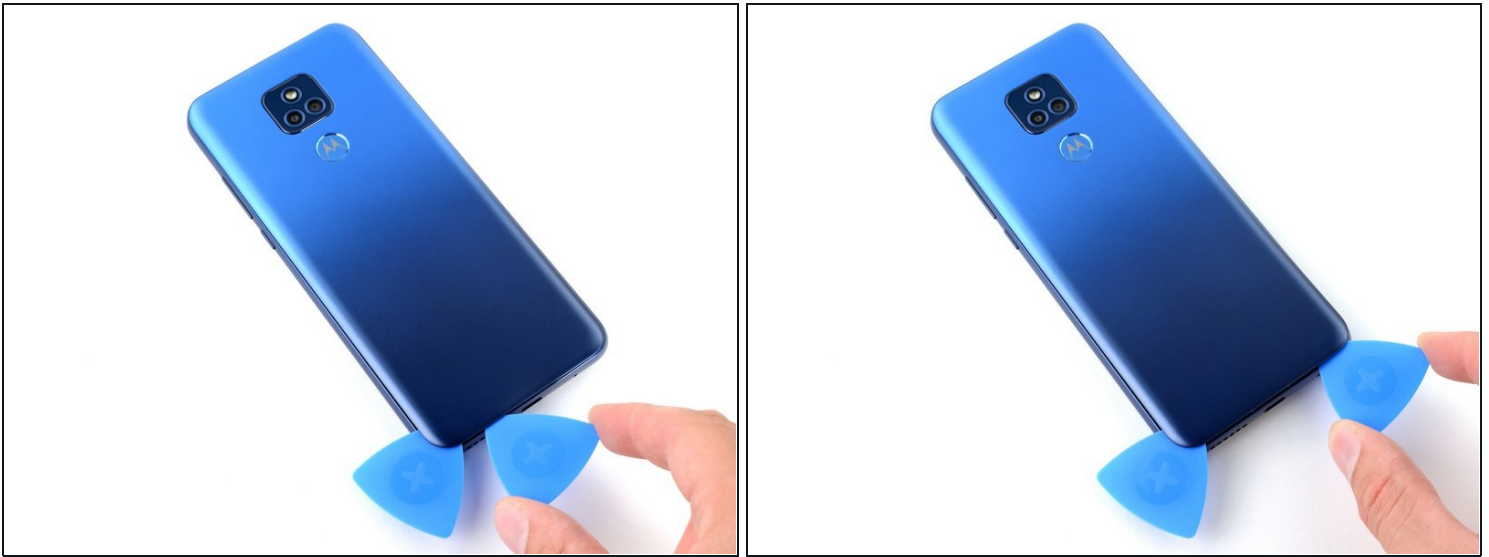
- Apply a suction cup to the back cover, as close to the center of the left edge as possible.
- Pull up on the suction cup with strong, steady force to create a gap between the cover and the frame.
- Insert an opening pick into the gap.

Step 3 — Slice the right adhesive



- Slide your opening pick back and forth along the left edge to slice through the adhesive.
- Leave the pick in at the bottom left corner to prevent the adhesive from resealing.

Step 4 — Slice the bottom adhesive



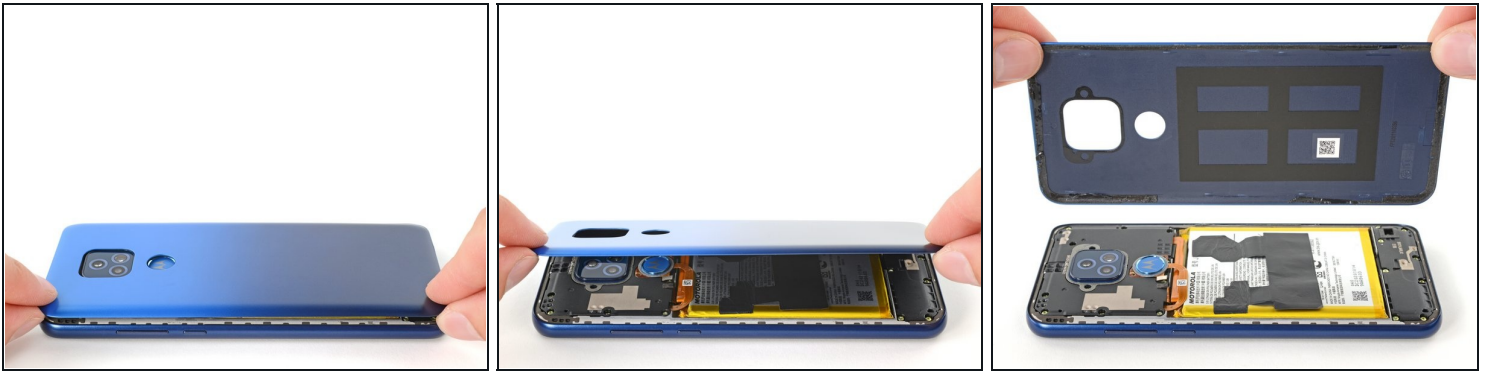
- Insert and slide a second opening pick to the bottom right corner to slice through the adhesive.
- Leave the pick inserted to prevent the bottom edge from resealing.
- Repeat this process for the right and top edges of the cover.

Step 5 — Dislodge the fingerprint reader



- ⓘ The fingerprint reader is connected to the motherboard by a fragile cable. You must free it before pulling the cover off.
- Grab and lift the bottom edge of the cover.
 - As you lift the back cover, press and unstick the fingerprint reader from it.

Step 6 — Remove the back cover



- Grab and remove the back cover.
 - ① If your back cover is still sticking to the frame, slide the pick around the edges of the phone to slice through any remaining adhesive.
- ★ Reassembly notes:
 - This is a good point to test your phone before sealing it up. [Follow this guide](#) to perform a hardware test. Be sure to power your phone back down completely before you continue working.
 - To adhere the back cover with custom-cut adhesives, [follow this guide](#).
 - To adhere the back cover with tape, [follow this guide](#).

Step 7 — Reposition the fingerprint reader



- Flip the fingerprint reader to the left, away from the phone.

⚠ Don't fold or sharply bend the ribbon cable.

Step 8 — Unfasten the motherboard cover



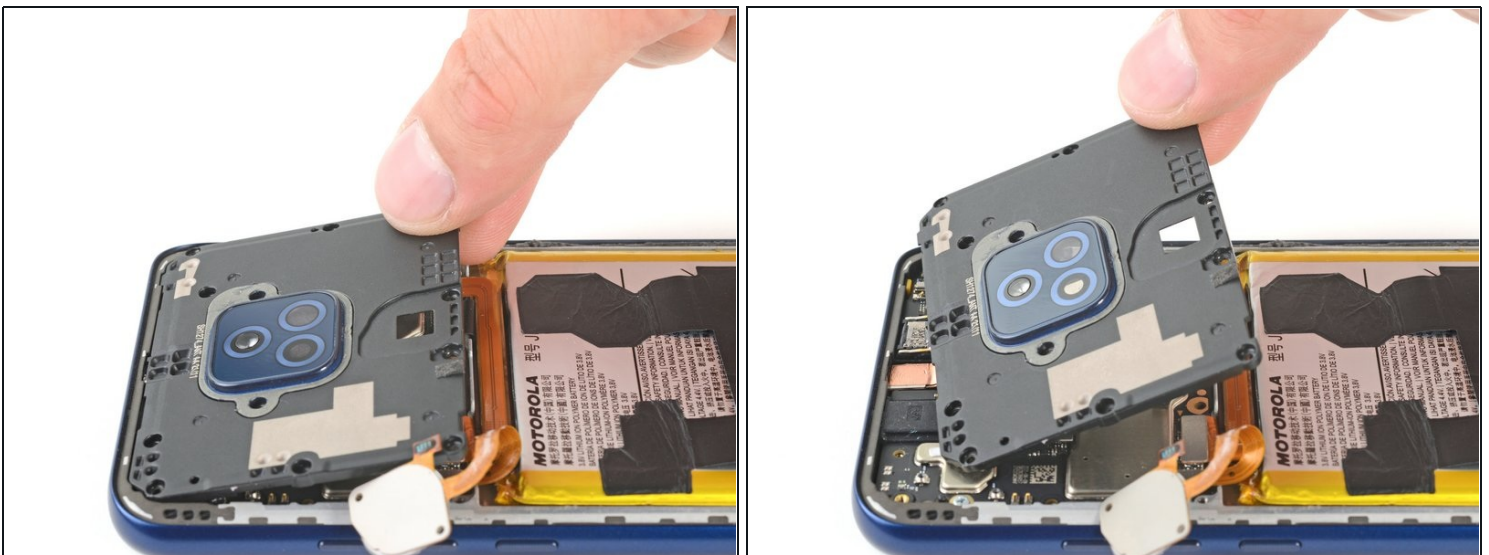
- Use your Phillips screwdriver to remove the twelve 3.9 mm-long screws securing the motherboard cover.

Step 9 — Pry the motherboard cover



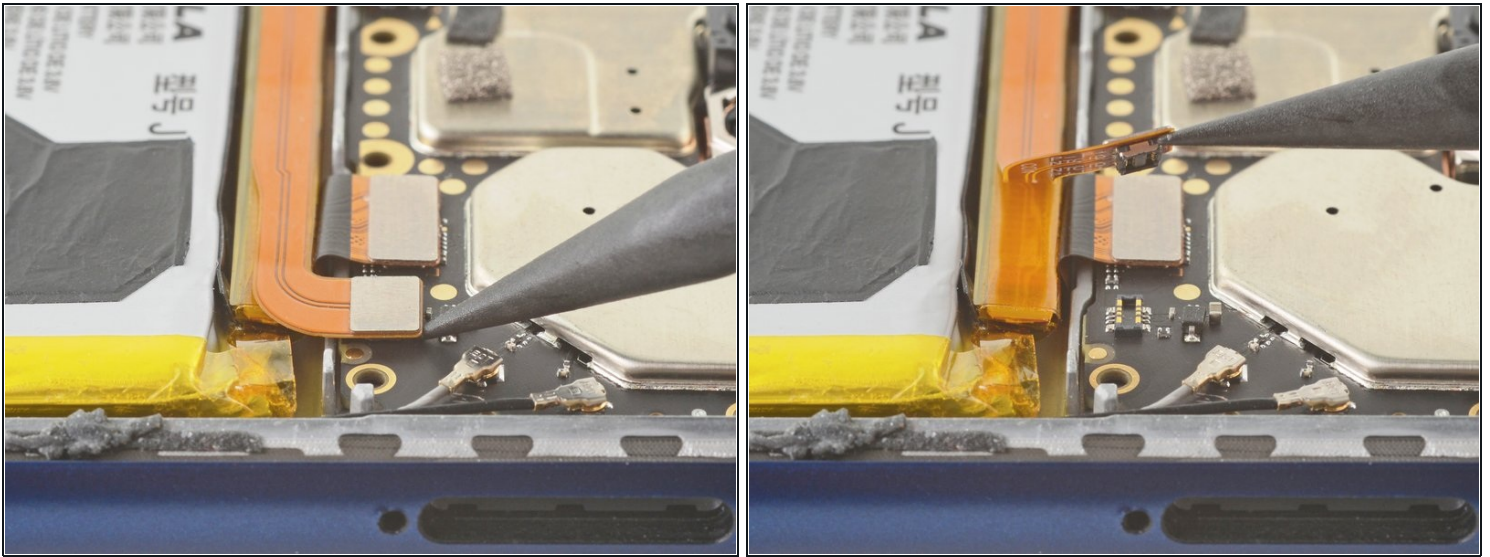
- Insert the pointed end of a spudger between the bottom right corner of the motherboard cover and the frame.
- Pry the cover upward until you can grab it with your fingers.

Step 10 — Remove the motherboard cover



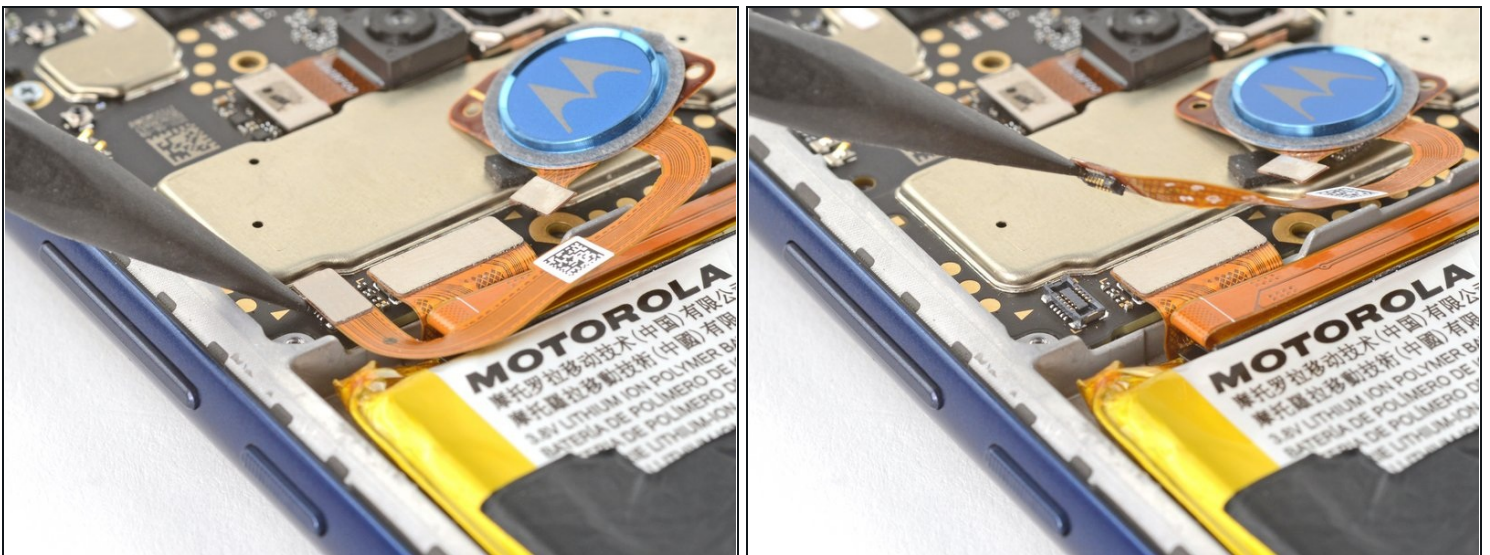
- Grab the bottom edge of the motherboard cover and remove it from the frame.

Step 11 — Disconnect the battery



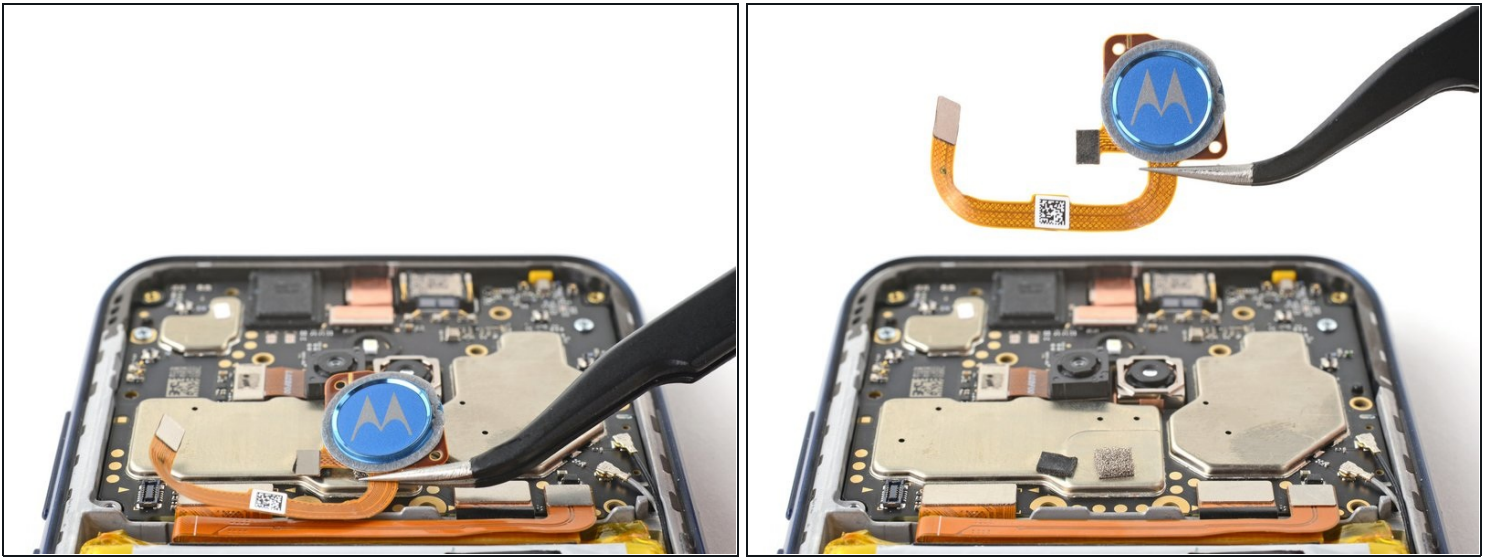
- Use the pointed end of your spudger to pry and disconnect the battery's press connector.
- ① To re-attach [press connectors](#), carefully align and press down on one side until it clicks into place, then repeat on the other side. Don't press down on the middle. If the connector is misaligned, the pins can bend and cause permanent damage.

Step 12 — Disconnect the fingerprint reader



- Use the pointed end of your spudger to pry and disconnect the fingerprint reader's press connector.
- ① [The gold arrow](#) indicates the direction to pry from.

Step 13 — Remove the fingerprint reader



- Use your fingers or tweezers to remove the fingerprint reader.

⚠ Be careful while handling the fragile ribbon cable.

Step 14 — Soften the adhesive with heat



- [Heat an iOpener](#) and apply it to the left edge of the screen for about two minutes.

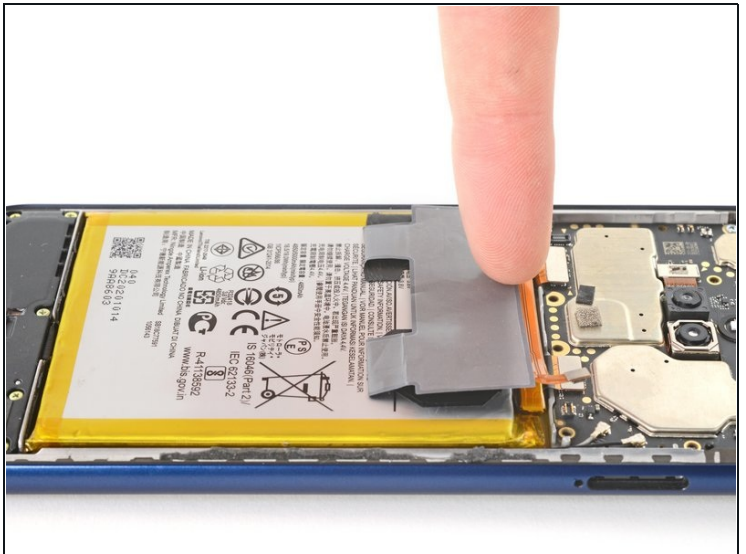
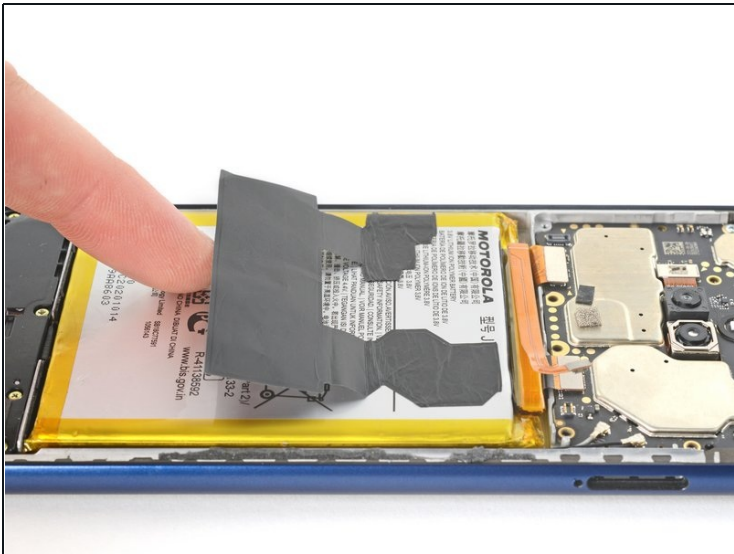
ⓘ A hair dryer, [heat gun](#), or hot plate may also be used, but be careful not to overheat the phone—the display and internal battery are both susceptible to heat damage.

Step 15 — Soften the adhesive with isopropyl alcohol



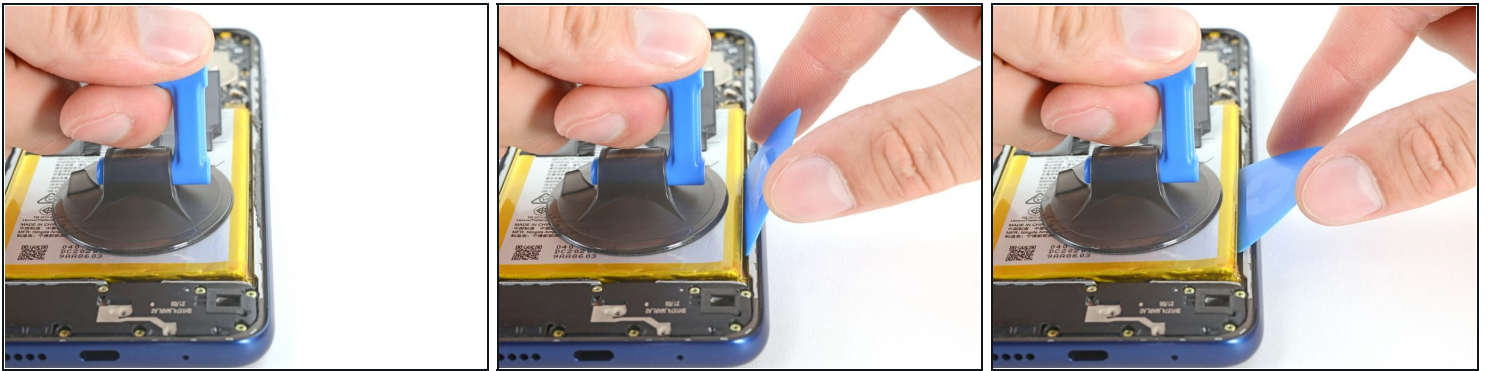
- ① Additionally, you may use highly-concentrated isopropyl alcohol (over 90%) to further loosen the adhesive securing the battery.
- Apply the isopropyl alcohol into the gaps between the sides of the battery and the frame.

Step 16 — Reposition the graphite film



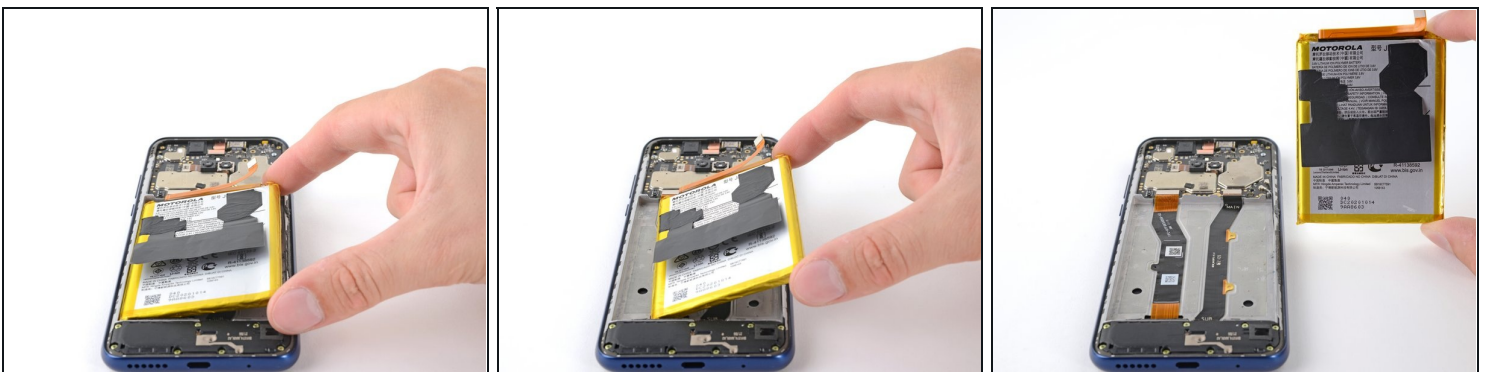
- Fold the graphite heat dispersion film toward the top of the battery.

Step 17 — Pry the battery



- Place a suction handle on the center of the battery.
 - Insert an opening pick between the right edge of the battery and the frame.
 - Use a steady force to pull on the suction handle and simultaneously pry with the pick.
⚠ Don't use excessive force on the battery. Slow, consistent pressure is all that is required to free it from the frame.
- ⓘ Apply more heat or isopropyl alcohol if the battery readheres.

Step 18 — Remove the battery



- Remove the battery from its recess.
⚠ Don't reinstall a damaged or deformed battery, as doing so is a potential safety hazard.
- ✦ [Use this guide](#) to install a battery with custom-cut adhesives, or [use this guide](#) to install a battery with an adhesive sheet.

Compare your new replacement part to the original part—be sure to transfer remaining components and remove adhesive backings from the new part before installing.

To reassemble your device, follow these instructions in reverse order.

Take your e-waste to an [R2 or e-Stewards certified recycler](#).

Repair didn't go as planned? Try some [basic troubleshooting](#), or ask our [Answers community](#) for help.