



Lenovo B50-80 Teardown Guide

Full teardown of the Lenovo B50-80F0 Laptop....

Written By: Ian Steiger



INTRODUCTION

Full teardown of the Lenovo B50-80F0 Laptop.

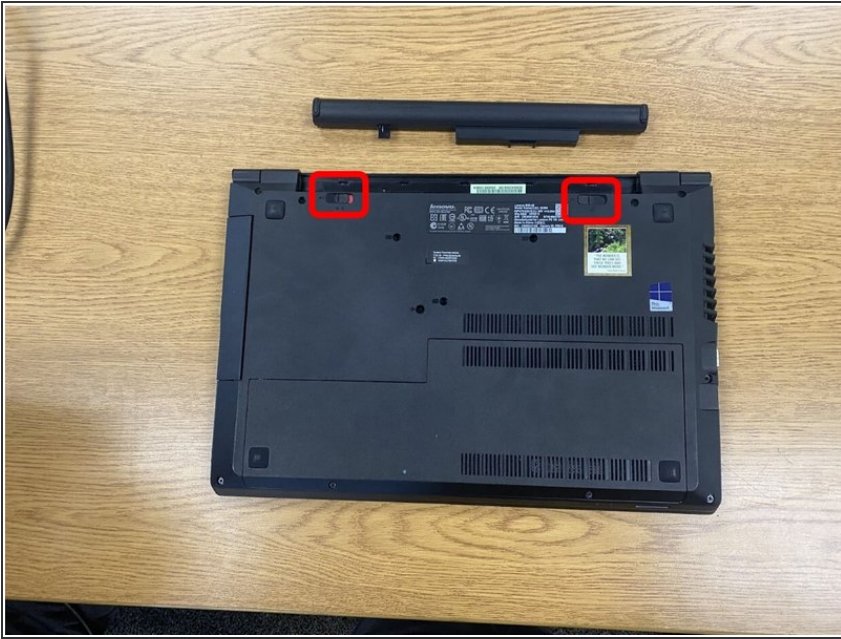
Created by Students of Cary High School.



TOOLS:

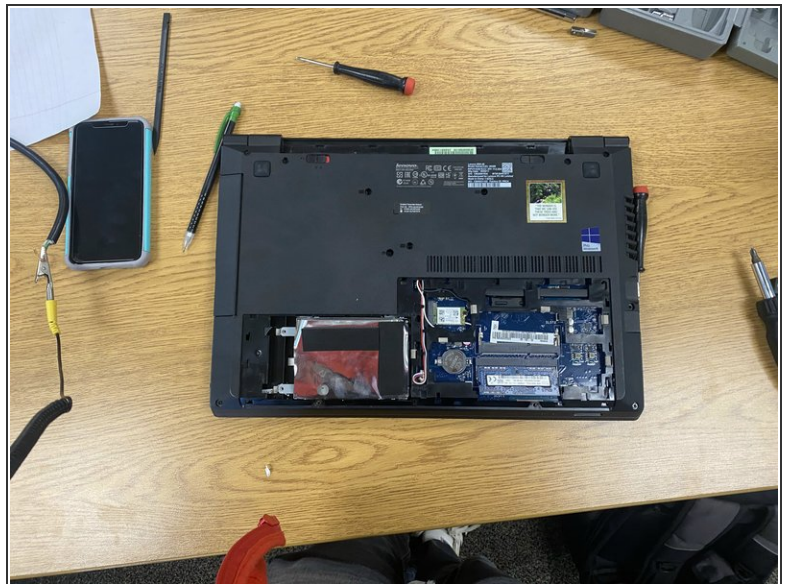
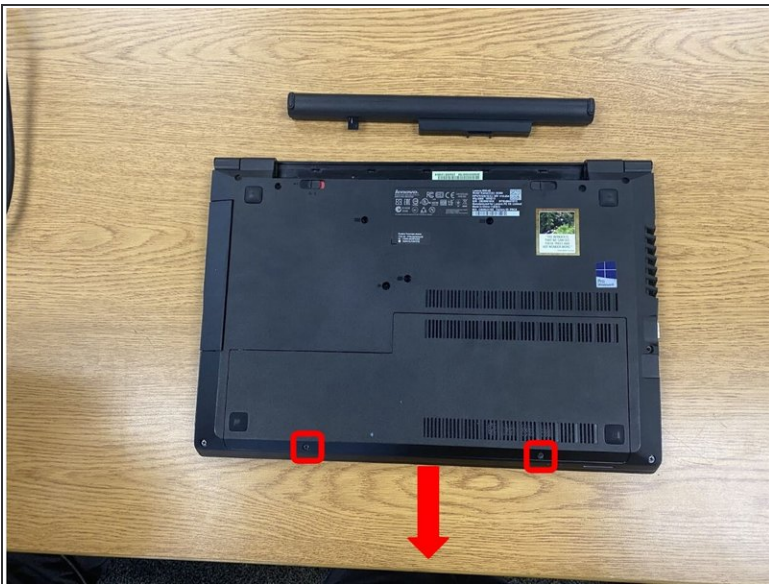
- [Spudger](#) (1)
 - [Phillips #0 Screwdriver](#) (1)
 - [Anti-Static Wrist Strap](#) (1)
-

Step 1 — Battery Removal



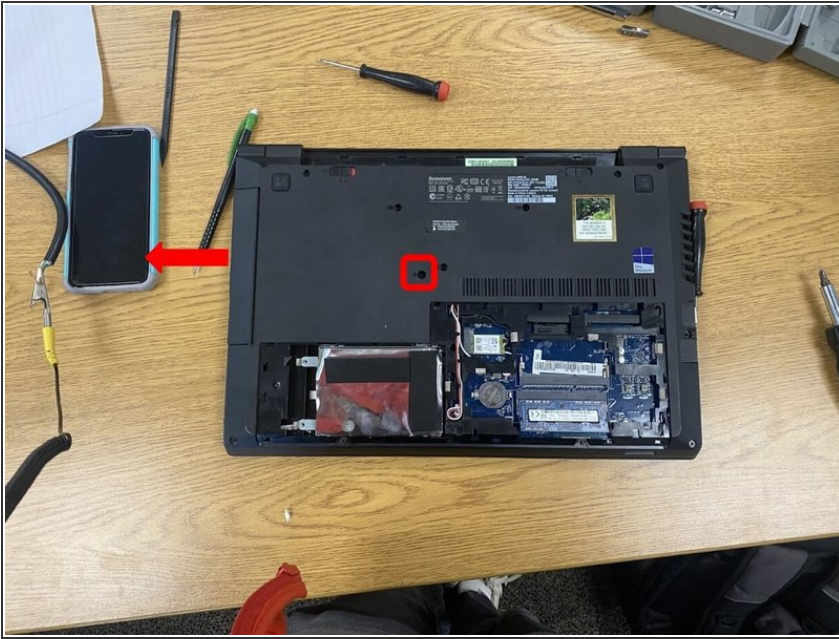
- Move the switches to the unlocked position then push the battery out

Step 2 — Service Door Removal



- There are two screws (outlined in red) holding the service door in place. Remove these and slide the door off.
- Under the service door, you will see the hard drive, CMOS battery, WiFi card, and RAM.

Step 3 — Optical Drive Removal



- Remove the highlighted screw, then slide the optical drive out.
- Lower-specced laptops may only have a plastic placeholder for the optical drive.

Step 4 — RAM, Hard Drive, and CMOS Battery Removal



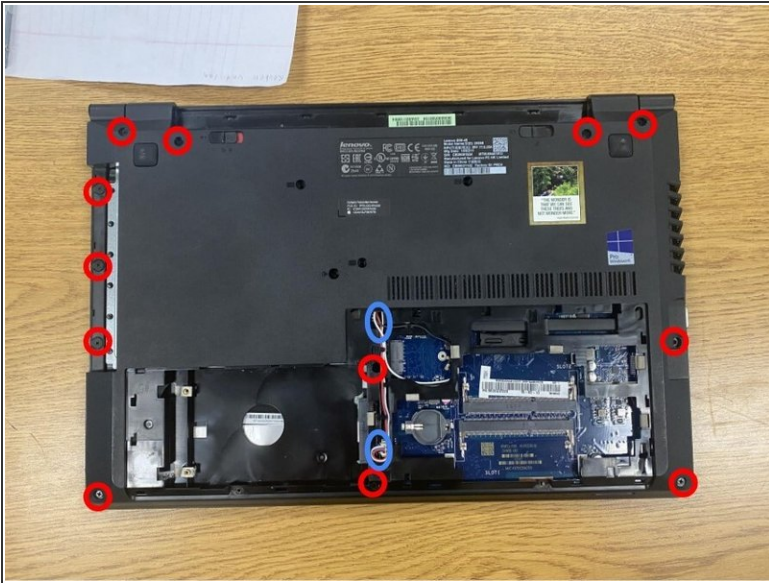
- For the hard drive, remove the highlighted screws and lift and remove the hard drive out.
- Next, take a plastic spudger, put it under the CMOS battery, and pry it out.
- Then, pull the sides on the RAM stick(s) and remove them.

Step 5 — Keyboard Removal



- The keyboard can be removed from the frame once the three retaining screws (circled in red) have been removed.
- Once screws have been removed, pop out the keyboard carefully with a spudger and unplug the ribbon cable attaching it to the motherboard.

Step 6 — Keyboard Bezel Removal



- To start, remove the 12 highlighted screws.
- Next, disconnect & unroute the FPC connectors highlighted in blue.
- Then with a plastic spudger tool, go around the edge of the bezel and pop all the plastic clips.
- Lift the bezel out.

Step 7 — I/O Board Removal



- Disconnect the highlighted flex cable from the motherboard, then peel it up from the casing.
- Remove the highlighted screw on the right, then simply pull the board and cable out of the system.

Step 8 — UltraBay Connector Removal



- Disconnect the flex cable from the motherboard and then remove the two highlighted screws, and then pull it out.

Step 9 — Charge Status LED Removal



- Remove the highlighted flex cable, then gently remove the cable and the LED.

Step 10 — Motherboard Removal



- Remove the 5 highlighted screws
- Pull the motherboard up and out

Step 11 — Power Cable Removal



- Pry the white nub out with a spudger to remove the charging cable.

Step 12 — Cooling Fan Removal



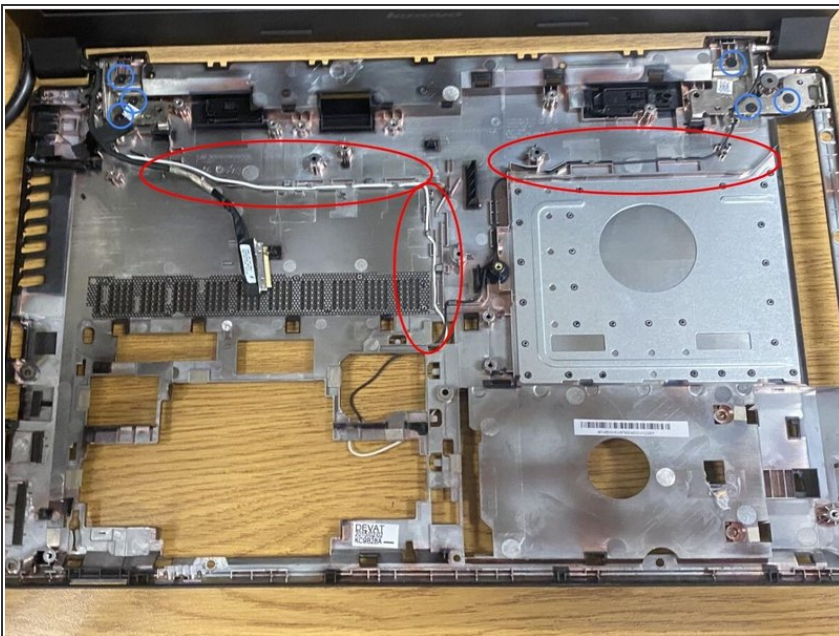
- Disconnect the fan cable from the motherboard
- Remove the one screw that holds the fan in place.

Step 13 — Speaker Removal



- Un-route the speaker cables (highlighted in blue).
- Remove the retaining screws (circled in red) and pull out the speakers.

Step 14 — Display Assembly Removal



- Un-route the antenna cables (highlighted in red)
- Remove the 6 retaining screws (circled in blue).
- The display will then be able to be slid out and removed from the rest of the body.

Step 15 — Display Bezel Removal



- At this point, the display bezel is able to be popped out.
- Use a thin piece of plastic to wedge it open if necessary.
- Be careful not to snap the bezel in the process!

Step 16 — Display Panel Removal



- Unscrew the 12 retaining screws (circled in red) and carefully pull out the display panel.
 - Be mindful of the connector cable.
- Flip the display over and remove the connector cable.
 - It should slide out easily.
- The hinge can also now be removed.

Step 17 — Camera Removal



- The camera will be at the top of the display.
- With a plastic tool, carefully pull up the wire on the top.
 - The camera is now able to be popped out.
- Disconnect the connector cable and remove the camera from the display.

Step 18 — Final Result



- Insert wisdom here.