



OnePlus 7T Battery Replacement

Use this guide to replace a worn-out or dead...

Written By: Manuel Haeussermann



INTRODUCTION

Use this guide to replace a worn-out or dead battery in your OnePlus 7T.

If your battery is swollen, [take appropriate precautions](#). For your safety, **discharge your battery below 25%** before disassembling your phone. This reduces the risk of a dangerous thermal event if the battery is accidentally damaged during the repair.

You'll need replacement adhesive to reattach components when reassembling the device.



TOOLS:

- [Isopropyl Alcohol \(90% or Greater\)](#) (1)
- [Phillips #00 Screwdriver](#) (1)
- [Spudger](#) (1)
- [Suction Handle](#) (1)
- [iOpener](#) (1)
- [iFixit Opening Picks set of 6](#) (1)



PARTS:

- [Precut Adhesive Card](#) (1)
- [OnePlus 7T Battery](#) (1)

Step 1 — Heat the rear glass



⚠ Be sure to power off your phone before you begin.

- Apply a [heated iOpener](#) to the rear glass for two minutes to loosen the adhesive beneath.
- ⓘ A hair dryer, [heat gun](#), or hot plate may also be used, but be careful not to overheat the phone—the AMOLED display and internal battery are both susceptible to heat damage.

Step 2 — Insert an opening pick



- Apply a suction handle to the right edge of the rear glass.
- ⓘ If the back cover is cracked, the suction handle may not stick. Try [lifting it with strong tape](#), or superglue the suction handle in place and allow it to cure so you can proceed.
- Pull on the suction handle to create a gap between the rear glass and the frame.
- Insert an opening pick into the gap.

Step 3 — Slice the adhesive



- Slide the opening pick along the edge to the bottom right corner.
- Leave the opening pick in the bottom right corner to prevent the adhesive from resealing.
- ❗ Once you have inserted an opening pick, feel free to remove the suction handle or continue to use it for a better grip during this process.

Step 4



- Insert a second opening pick in the gap you just created.
- Slide the opening pick along the edge to the top right corner.
- ❗ If you have trouble with slicing, you can use the [iOpener](#) again to soften the adhesive.
- Leave the opening pick in the top right corner to prevent the adhesive from resealing.

Step 5



⚠ When you slice near the camera assembly, insert only the tip of the opening pick (~4-5 mm) to avoid damaging or smearing the camera.

- Insert a third opening pick under the top right corner of the rear glass.
- Slide the opening pick along the edge of the phone to the top left corner to cut the adhesive.
- Leave the opening pick in the top left corner to prevent the adhesive from resealing.

Step 6



- Insert a fourth opening pick under the top left corner.
- Slide the opening pick along the edge to the bottom left corner to cut the adhesive.
- Leave the opening pick in the bottom left corner to prevent the adhesive from resealing.

Step 7



- Insert a fifth opening pick under the bottom left corner.
- Slide it along the the edge to the bottom right corner to cut the remaining adhesive.

Step 8 — Remove the rear glass



- Remove the rear glass.
- ★ Apply new adhesive where necessary after cleaning the relevant areas with isopropyl alcohol (>90%).
- i [Secure the new back cover with pre-cut adhesive](#) or double-sided adhesive tape. After installing the back cover, apply strong, steady pressure to your phone for several minutes to help the adhesive form a good bond—a stack of heavy books works well.

Step 9 — Unscrew the motherboard cover



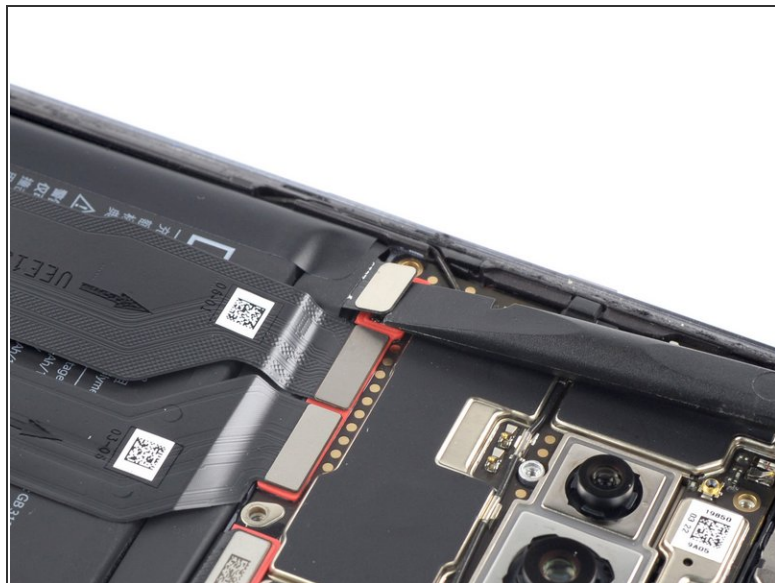
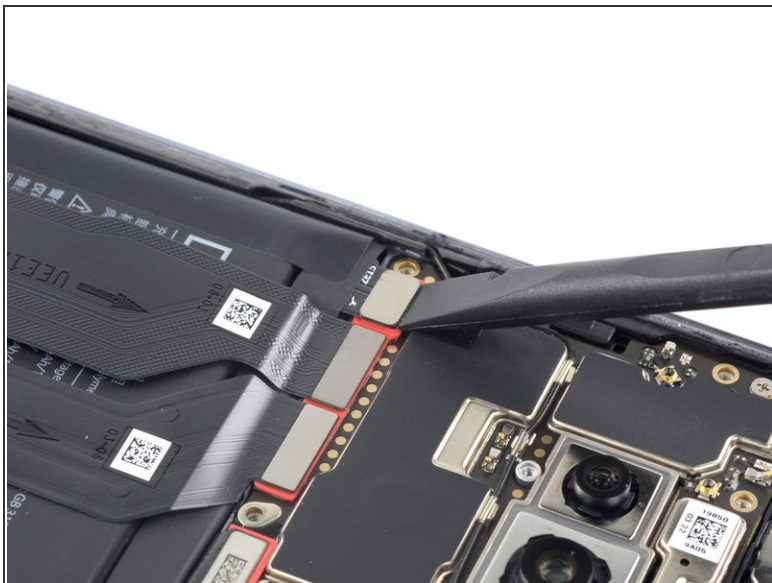
- Use a Phillips screwdriver to remove the eleven 3.6 mm-long screws securing motherboard cover.
- ⓘ One of the screws is hidden beneath a white water damage sticker.

Step 10 — Remove motherboard cover



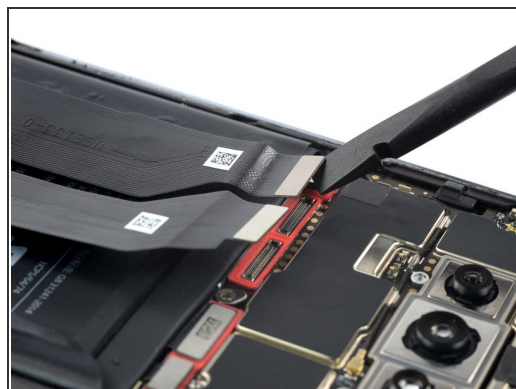
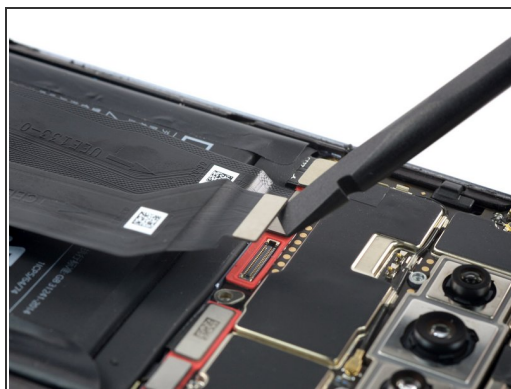
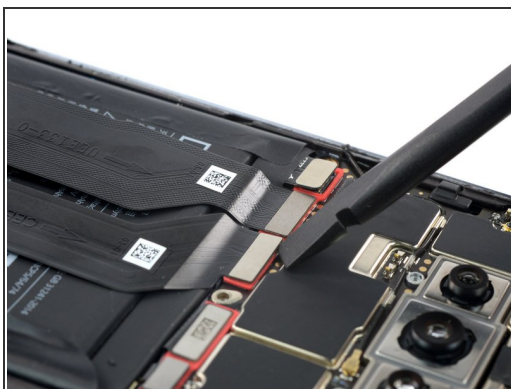
- Insert the tip of an opening pick under the right bottom of the motherboard cover.
- Slide the opening pick along the motherboard cover to release the plastic clips that hold it in its place.
- Remove the motherboard cover.

Step 11 — Disconnect the battery



- Use a spudger to disconnect the battery by prying the connector straight up from its socket.

Step 12 — Disconnect the flex cables



- Use the flat end of a spudger to disconnect the two flex cables.

Step 13 — Reposition the flex cables



- Bend the two flex cables toward the bottom of the phone and out of the way of the battery.

⚠️ Avoid folding or sharply bending the cables as you reposition them. Doing so could damage the cables.

Step 14 — Remove the adhesive tape



- Use a spudger to carefully remove the adhesive tape on the left edge from the battery.

Step 15 — Remove the battery



- Peel back the red pull tab.
 - Pull up on the red pull tab to lift the battery out of its recess and swing it up to an upright position.
- i** If you're having trouble removing the battery, you can apply an [iOpener](#) to loosen the adhesive underneath the battery.

Step 16 — Remove the battery



- Remove the battery.

⚠ Do not reinstall a damaged or deformed battery, as doing so is a potential safety hazard.

★ [Secure the new battery with pre-cut adhesive](#) or double-sided adhesive tape. In order to position it correctly, apply the new adhesive into the device at the places where the old adhesive was located, not directly onto the battery. Press the new battery firmly into place.

★ During reassembly, temporarily reconnect the battery to the motherboard to help align it correctly. Disconnect the battery after it's seated.

If possible, turn on your device and test your repair before installing new adhesive and resealing.

To reassemble your device, follow these instructions in reverse order. Apply new adhesive where necessary after cleaning the relevant areas with isopropyl alcohol (>90%).

For optimal performance, [calibrate your newly installed battery](#) after completing this guide.

Take your e-waste to an [R2 or e-Stewards certified recycler](#).

Repair didn't go as planned? Try some [basic troubleshooting](#), or ask our [Answers Community](#) for help.