



# Motorola RAZR2 v9m Camera Replacement

Replace a broken RAZR2 v9m camera.

Written By: John T Roller



# INTRODUCTION

Use this repair guide to replace the camera in a Motorola RAZR2 v9m.



## TOOLS:

- [T5 Torx Screwdriver](#) (1)
  - [Spudger](#) (1)
  - [iFixit Opening Tools](#) (1)
-

## Step 1 — Battery



- Push the rear cover toward the hinge of the RAZR2. The panel will slide about 3 mm.

## Step 2



- Pinch the top and bottom edges of the panel and pull it away from the RAZR2.
- ⓘ The rear panel uses four small hooks to hold it in place. If the panel will not easily pull away, slide the panel more toward the hinge.

## Step 3



- Gently pull the white plastic tab to lift the battery away from the RAZR2.
- ⓘ The white plastic tab is attached to the phone. Only pull it enough to expose the edges of the battery.

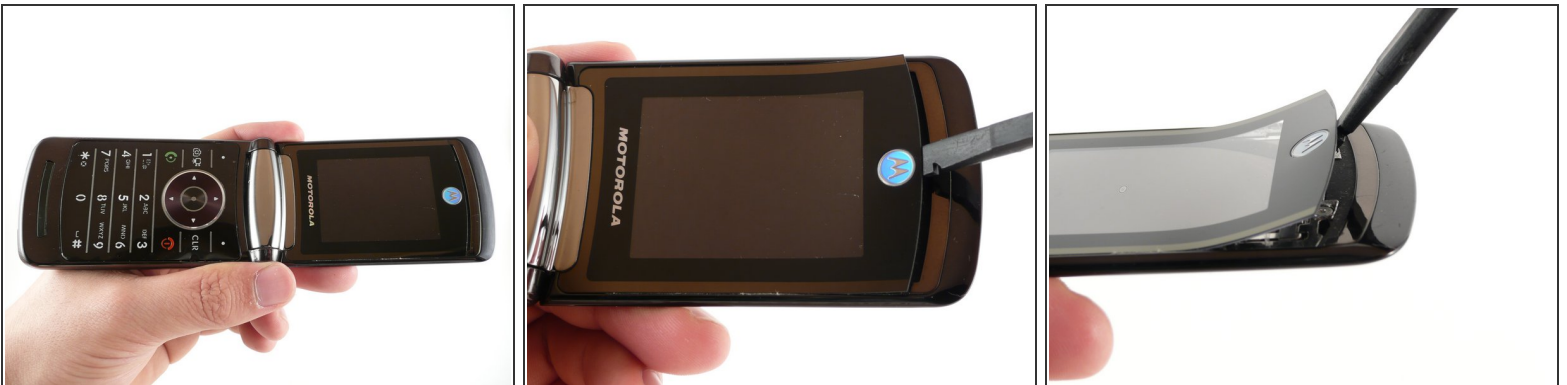


## Step 4



- To remove the battery, grasp its edges pull away from the phone.
- ❗ When installing a new battery, be sure the metal contacts on the phone line up with the ones on the battery.

## Step 5 — Camera



- Flip open the RAZR2 with the keypad and main LCD facing you.
- Insert a spudger into the small gap above the plastic screen.
- Gently pry the screen away from the phone.

## Step 6



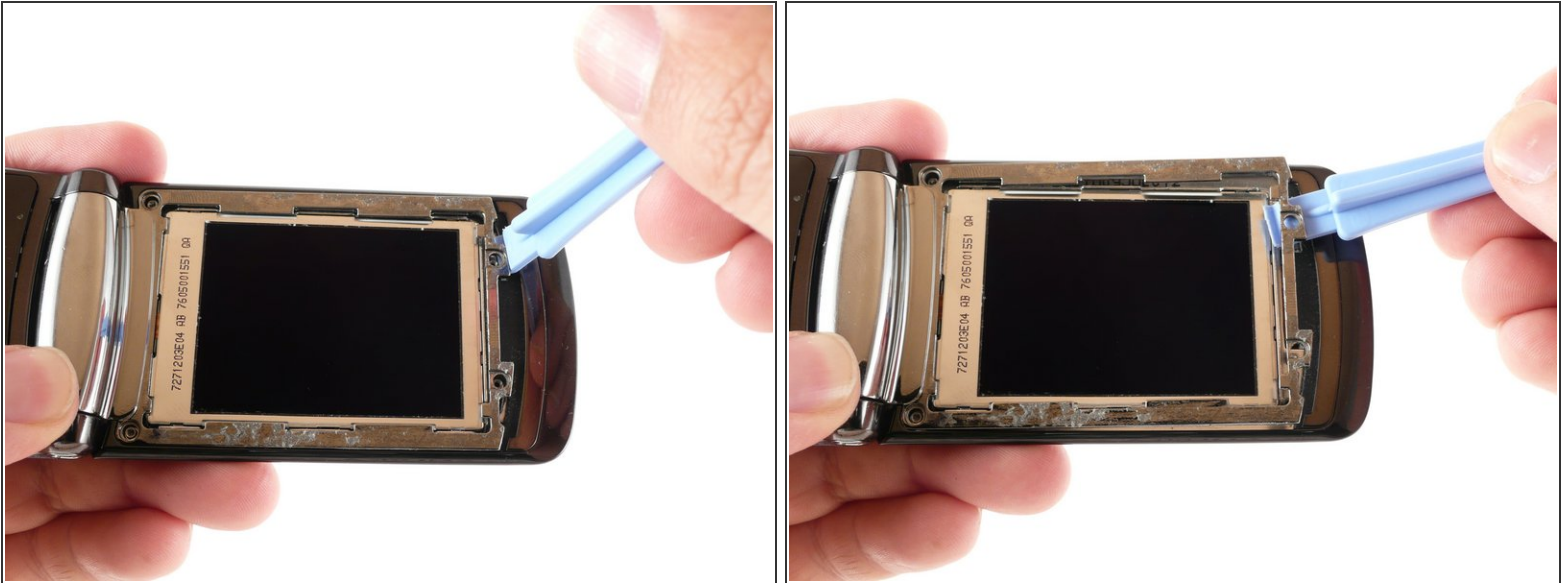
- The plastic screen is held in place by adhesive. Run the spudger along both sides of the screen to separate it from the RAZR2.
- Lift the screen away from the phone.

## Step 7



- Remove the four 2-mm T5 Torx screws

## Step 8



- Use a plastic opening tool to pry the top end of the metal frame away from the RAZR2.

## Step 9



- Insert a plastic opening tool under the metal frame at the hinge of the RAZR2.
- Gently pry the hinge portion of the metal frame away from the phone.
- ⓘ The metal frame is latched to the phone on the corner closest to the clear and end call buttons. Pry this part of the frame away last.

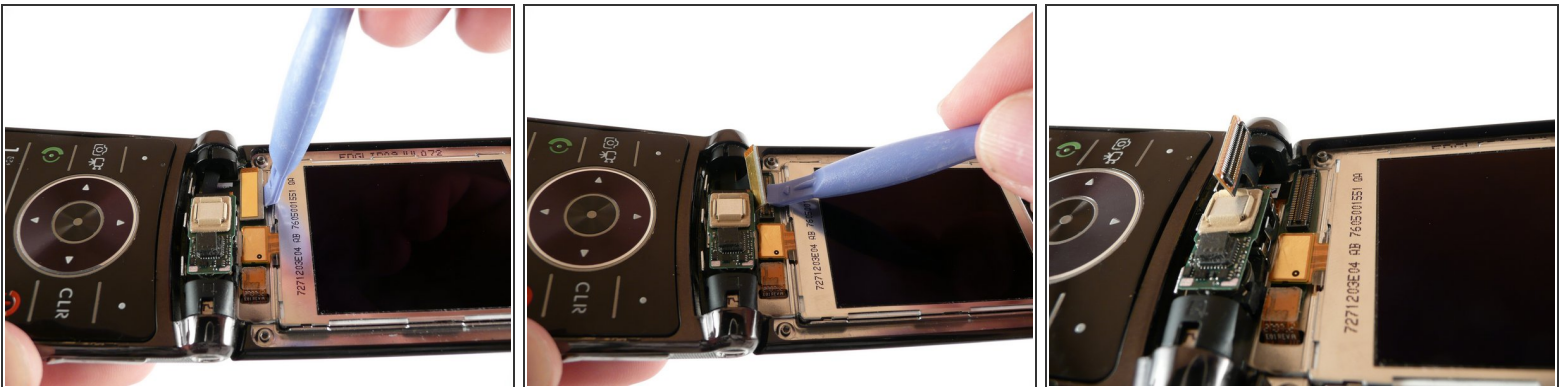


## Step 10



- Lift the frame away from the phone.
- ⓘ When reassembling, insert the latch on the metal frame into the phone before inserting any other part of the frame.

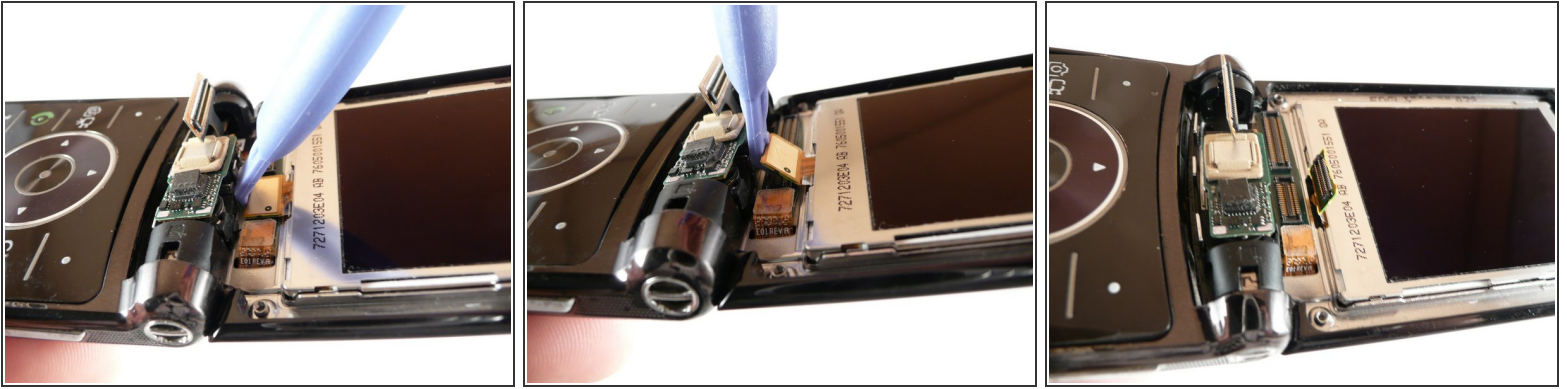
## Step 11



- Use the plastic opening tool to gently pry the motherboard cable out of its socket.

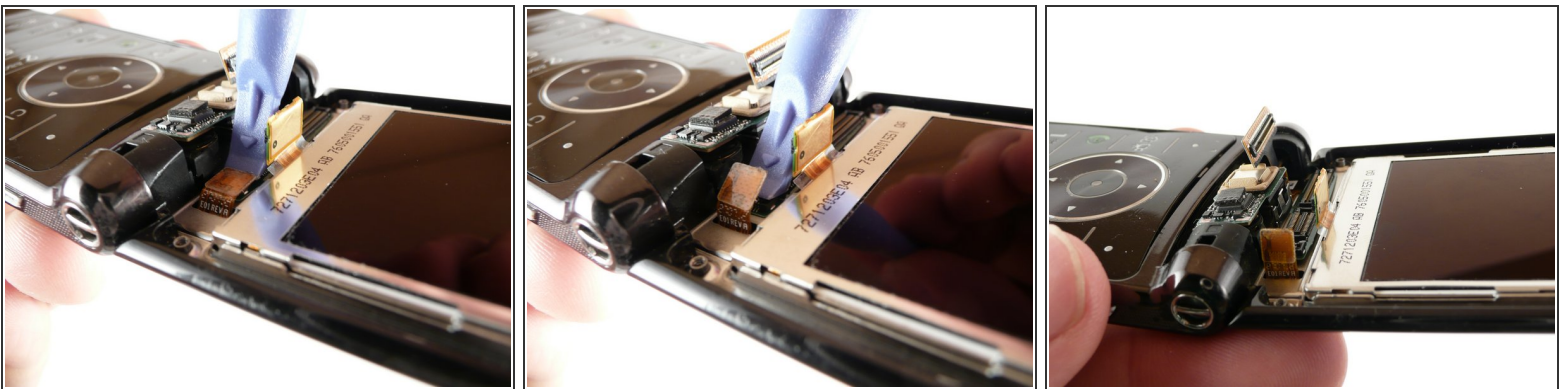


## Step 12



- Use the plastic opening tool to gently pry the LCD cable out of its socket.

## Step 13



- Use the plastic opening tool to gently pry the camera cable out of its socket.

## Step 14



- Use a plastic opening tool to gently pry the camera assembly away from the RAZR2.

To reassemble your device, follow these instructions in reverse order.