



Samsung Galaxy S21 Plus SIM Card Tray Replacement

Use this guide to remove or replace the SIM...

Written By: Alex Diaz-Kokaisl



INTRODUCTION

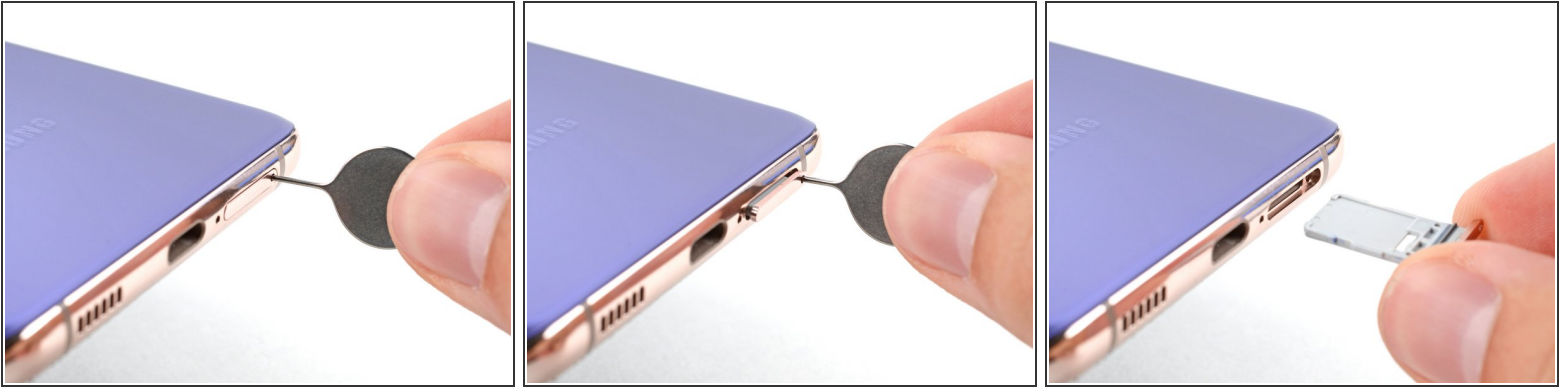
Use this guide to remove or replace the SIM card in your Samsung Galaxy S21.



TOOLS:

- [SIM Card Eject Tool](#) (1)
-

Step 1 — Remove the SIM card tray



- Insert a SIM eject tool, bit, or straightened paper clip into the SIM card tray hole on the top edge of the phone.
 - Press the SIM eject tool into the SIM card tray hole to eject the SIM card tray.
 - Remove the SIM card tray.
- i** If you accidentally inserted the SIM eject tool into a microphone hole, don't worry! [You most likely didn't damage the microphone.](#)

To reassemble your device, follow the above steps in reverse order.

After you've completed the repair, [follow this guide](#) to test your repair.