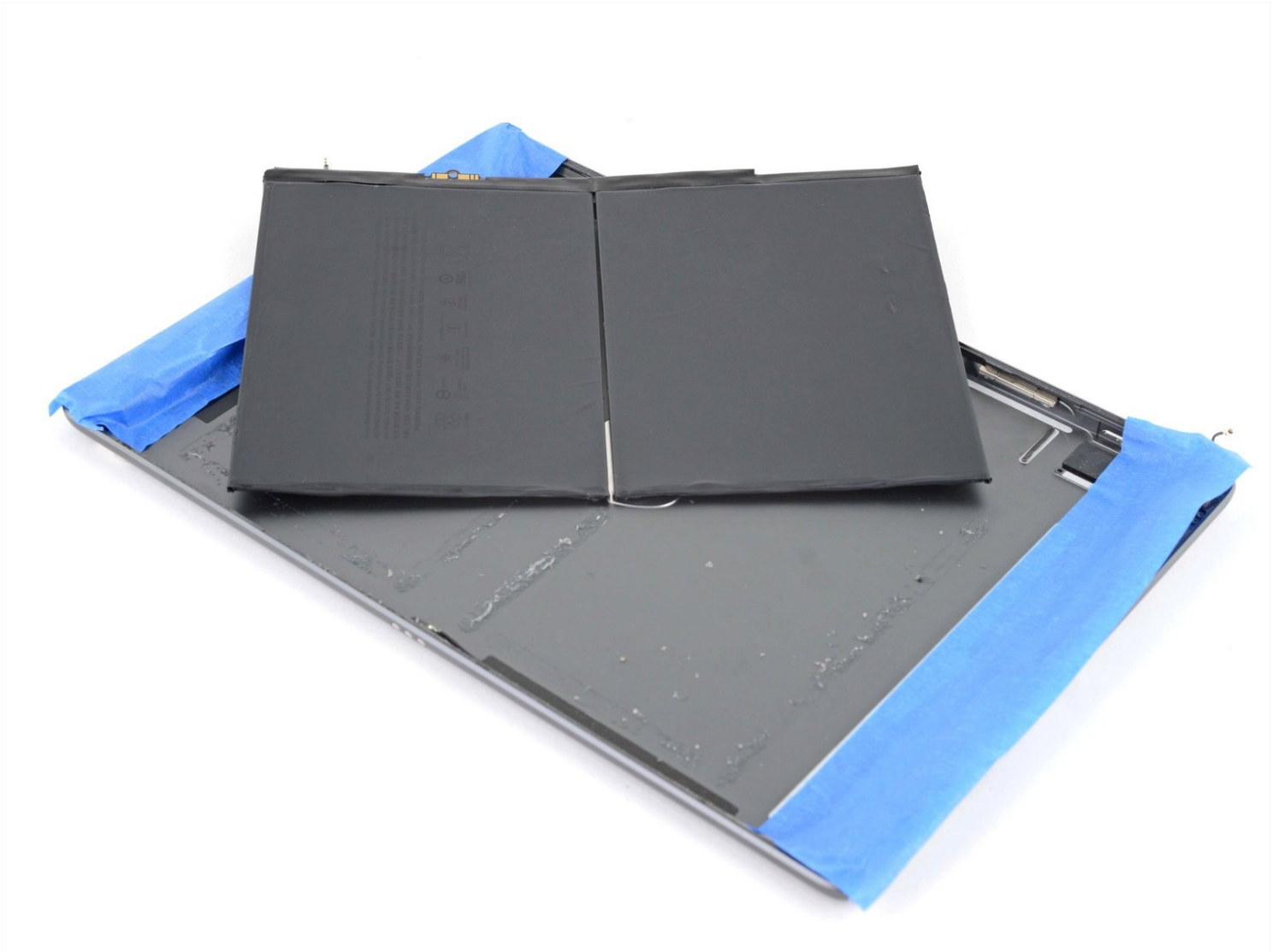




# iPad 7 Battery Replacement

Follow this guide to remove or replace the...

Written By: Robert Boyd



# INTRODUCTION

Follow this guide to remove or replace the battery in an iPad 7.

Note: this guide is for the LTE version only. For the Wi-Fi version, click [here](#).

**For your safety, discharge the battery below 25% before disassembling your iPad.** This reduces the risk of a dangerous thermal event if the battery is accidentally damaged during the repair. If your battery is swollen, [take appropriate precautions](#).

Be very careful when you isolate the battery using a battery blocker. The battery contacts are easily damaged, resulting in irreversible damage. If you choose to complete the guide without isolating the battery, avoid using metal tools except when completely necessary (like when removing screws) to prevent shorting the battery and damaging sensitive circuit components.

Some photos in this guide are from a different model and may contain slight visual discrepancies, but they won't affect the guide procedure.



## TOOLS:

[Anti-Clamp](#) (1)  
[iFixit Opening Picks \(Set of 6\)](#) (1)  
[Spudger](#) (1)  
[Halberd Spudger](#) (1)  
[Packing Tape](#) (1)  
[Safety Glasses](#) (1)  
[Deck of Cards](#) (1)  
[Polyimide Tape](#) (1)  
[Battery Blocker](#) (1)  
[SIM Card Eject Tool](#) (1)  
[Tweezers](#) (1)  
[iOpener](#) (1)  
[Suction Handle](#) (1)  
[Phillips #00 Screwdriver](#) (1)  
[iFixit Adhesive Remover](#) (1)



## PARTS:

[iPad 7/8/9 Adhesive Strips](#) (1)  
[iPad 7/8/9 Battery](#) (1)

---

## Step 1 — Heat the left edge



- [Heat an iOpener](#) and apply it to the left edge of the device for two minutes.

## Step 2 — Screen removal information



- While you're waiting for the adhesive to loosen, note the following areas that are sensitive to prying:
  - Front camera
  - Antennas
  - Display cables

### Step 3 — Anti-Clamp instructions



- ① The next three steps demonstrate the [Anti-Clamp](#), a tool we designed to make the opening procedure easier. **If you aren't using the Anti-Clamp, skip down three steps for an alternate method.**
- ① For complete instructions on how to use the Anti-Clamp, [check out this guide](#).
- Pull the blue handle backwards to unlock the Anti-Clamp's arms.
- Place an object under your iPad so it rests level between the suction cups.
- Position the suction cups near the middle of the left edge—one on the top, and one on the bottom.
- Hold the bottom of the Anti-Clamp steady and firmly press down on the top cup to apply suction.
- ① If you find that the surface of your iPad is too slippery for the Anti-Clamp to hold onto, [use tape](#) to create a grippier surface.



## Step 4



- Pull the blue handle forward to lock the arms.
- Turn the handle clockwise 360 degrees or until the cups start to stretch.
- Make sure the suction cups remain aligned with each other. If they begin to slip out of alignment, loosen the suction cups slightly and realign the arms.

## Step 5



- Wait one minute to give the adhesive a chance to release and present an opening gap.
- If your screen isn't getting hot enough, you can use a hair dryer to heat along the left edge of the iPad.
  - ① For complete instructions on how to use a hair dryer, [check out this guide](#).
- Insert an opening pick under the digitizer when the Anti-Clamp creates a large enough gap.
  - ① If the Anti-Clamp doesn't create a sufficient gap, apply more heat to the area and rotate the handle clockwise half a turn.
- ⚠ **Don't crank more than a half a turn at a time, and wait one minute between turns. Let the Anti-Clamp and time do the work for you.**
- **Skip the next step.**

## Step 6 — Insert an opening pick



- ① If your display is badly cracked, [covering it with a layer of clear packing tape](#) may allow the suction cup to adhere. Alternatively, very strong tape may be used instead of the suction cup. If all else fails, you can superglue the suction cup to the broken screen.
- Once the screen is warm to touch, apply a suction handle to the left edge of the screen and as close to the edge as possible.
  - Lift the screen with the suction handle to create a small gap between the digitizer and the frame.
  - Insert an opening pick into the gap between the digitizer and the frame.

## Step 7 — Separate the left adhesive



- Insert a second opening pick into the gap you just created.
  - Slide the pick toward the bottom-left corner of the device to separate the adhesive.
  - Leave the pick in the bottom-left corner to prevent the adhesive from re-sealing.
- ⓘ Don't worry if you can see [the opening pick through the digitizer](#)—just pull the pick out. The LCD screen shouldn't be damaged, but you risk leaving behind hard-to-clean adhesive.

## Step 8



- If the opening pick gets stuck in the adhesive, "roll" the pick along the side of the iPad to continue separating the adhesive.

## Step 9



- Slide the first opening pick towards the top-left corner of the device to separate the adhesive.
- Leave the pick in the top-left corner to prevent the adhesive from re-sealing.

## Step 10 — Heat the top edge



- Heat an iOpener and apply it to the top edge of the device for two minutes.



### Step 11 — Separate the top left adhesive



- Rotate the pick around the top-left corner of the device to separate the adhesive.

### Step 12 — Separate the top adhesive



- Slide the opening pick along the top edge of the device, stopping just before you reach the front camera.

**⚠ Avoid sliding the pick over the front camera, as you may damage the lens. The following steps will show how to prevent this.**

### Step 13



- Pull the pick out until only the tip is between the digitizer and the frame.
- Slide the pick above the front camera to separate the adhesive.
- Leave the pick near the right side of the front camera before continuing.

### Step 14



- Re-insert the pick and slide it towards the top-right corner of the device to completely separate the top adhesive.
- Leave the pick in the top-right corner to prevent the adhesive from re-sealing.



## Step 15 — Heat the right edge



- Heat an iOpener and apply it to the right edge of the device for two minutes.

## Step 16 — Separate the top right adhesive



- Rotate the pick around the top-right corner of the device to separate the adhesive.

## Step 17 — Separate the right adhesive



- Insert a new opening pick and slide it to the middle of the iPad's right edge.

**⚠ The display cables are located approximately halfway from the bottom of the iPad. Stop sliding once you reach three inches from the bottom of the iPad.**

## Step 18 — Heat the bottom edge



- Heat an iOpener and apply it to the bottom edge of the device for two minutes.

## Step 19 — Separate the bottom left adhesive



- Slide the bottom-left pick to the bottom-left corner to separate the adhesive.  
**⚠ Don't fully rotate the pick around the corner, as you may damage the antenna.**
- Leave the pick in the bottom-left corner before moving to the next step.

## Step 20 — Separate the bottom adhesive



- Insert a new opening pick into the gap you just created on the bottom edge of the iPad.
- Slide the pick over the antenna, stopping just before the home button.  
**⚠ Only slide the pick towards the home button and not away from it, as you may damage the antenna.**
- ❗ If you need to slide the pick over this section again, remove and re-insert it at the bottom-left corner.
- Leave the pick to the left of the home button before continuing.

## Step 21



- Insert an opening pick into the gap you just created.
- Slide the pick underneath the home button and towards the bottom-right corner, making sure **only the tip** is between the digitizer and the frame.

⚠ Only insert the pick up to 1 mm to avoid damaging the right antenna.

## Step 22



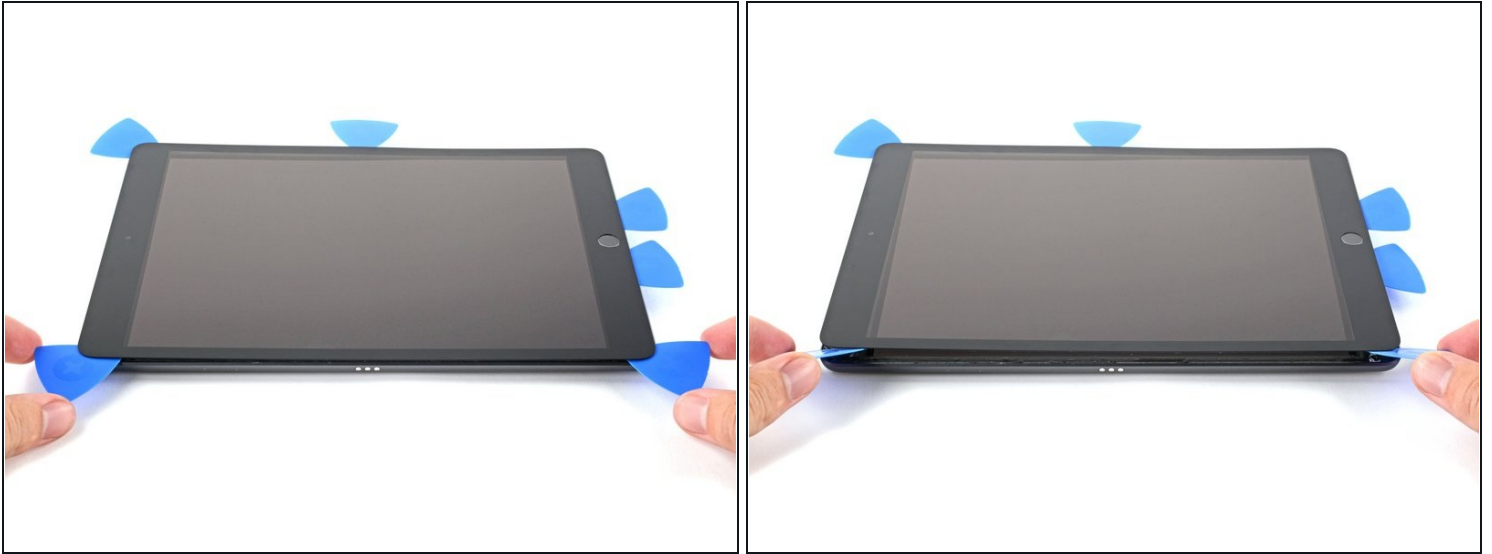
- Re-insert the pick and slide it towards the home button to completely separate the bottom adhesive.
- ⚠ Only slide the pick towards the home button and not away from it, as you may damage the antenna.
- ⓘ If you need to slide the pick over this section again, remove and re-insert it at the bottom-right corner.
- Leave the pick to the right of the home button before continuing.

## Step 23 — Heat the right edge



- Heat an iOpener and apply it to the right edge of the device for two minutes.

## Step 24



**⚠ Be very careful with this step.** Take your time, ensure the adhesive is hot and soft, and make sure you separated all of the adhesive with a pick. Don't be afraid to stop and reheat.

- Twist the two opening picks on the left corners of the iPad to lift the digitizer slightly, separating the the last of the adhesive in the process.
- ① If there's a significant amount of resistance, reheat the edges and work along them with an opening pick.

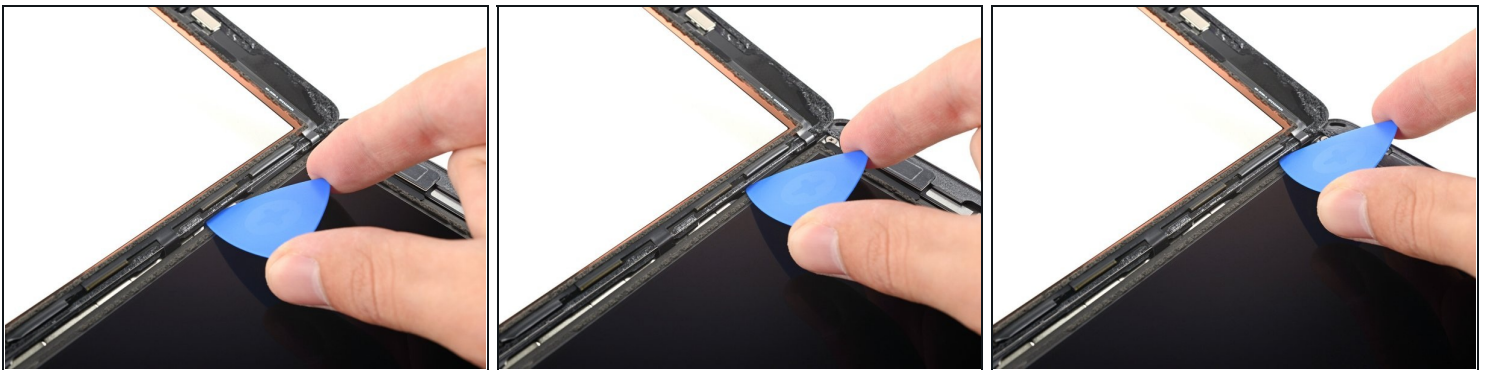


## Step 25



- Lift the left edge of the digitizer upwards to further separate the adhesive along the right edge of the iPad.

## Step 26 — Separate the right adhesive



- While supporting the digitizer, slide an opening pick between the two display cables to separate the last of the adhesive.



## Step 27



- Once all of the adhesive has been separated, open the digitizer like a book and rest it parallel to the iPad.
- ☑ During reassembly, clean the remaining adhesive from the frame—and the digitizer if you're re-using it—with isopropyl alcohol. Replace the adhesive with our [adhesive strips](#) or [pre-cut adhesive cards](#).
- ☑ Be mindful of the display cables when reassembling the device. Make sure they are folded properly underneath the LCD screen to prevent any damage.

## Step 28 — Remove the LCD



- Use a Phillips screwdriver to remove the four 4.3 mm-long screws securing the LCD to the frame.
  - Remove any tape obscuring the LCD screws.
- ☑ Throughout this repair, [keep track of each screw](#) and make sure it goes back exactly where it came from to avoid damaging your device.

## Step 29 — Flip the LCD over

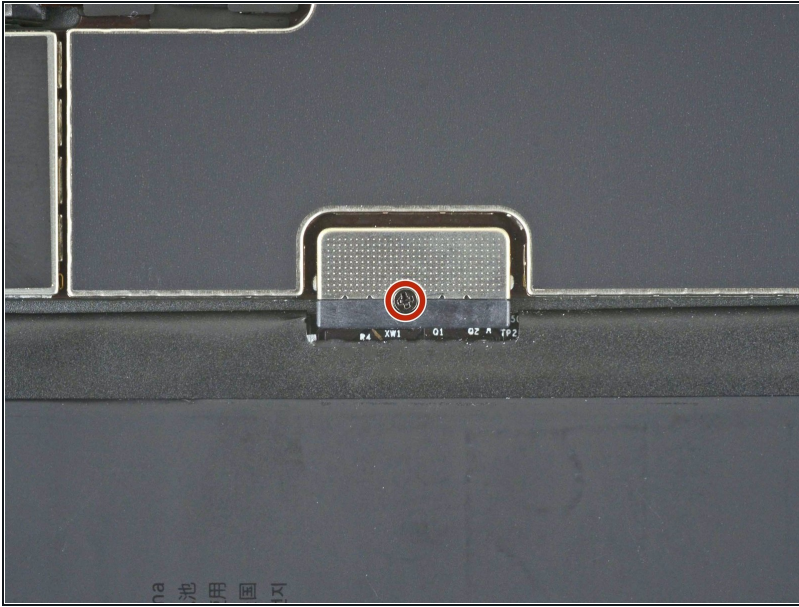


⚠ Don't attempt to fully remove the LCD during this step, as it's still connected by several cables at the home button end.

⚠ Only lift the LCD from the front-facing camera end.

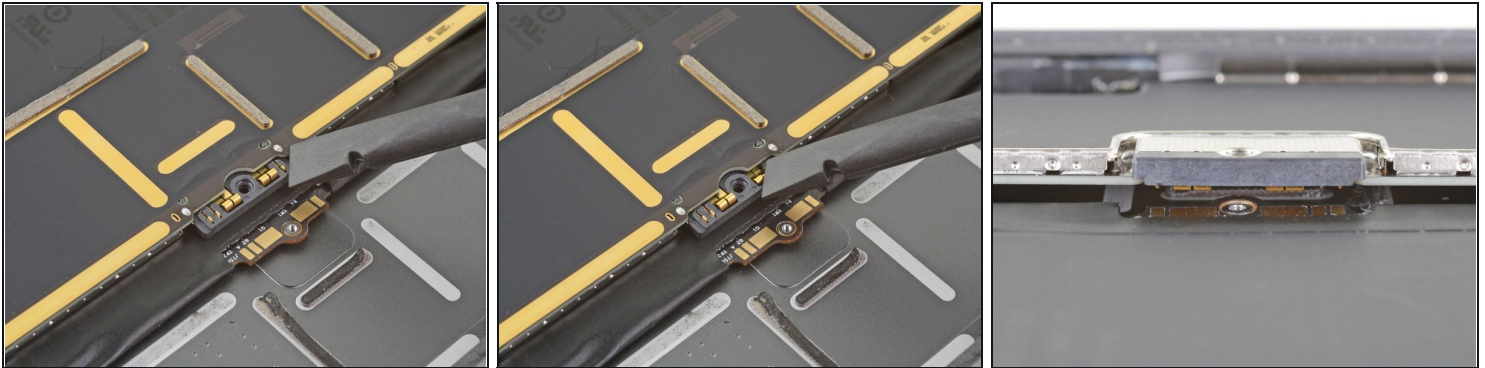
- Use the flat end of a spudger to pry the LCD out of its recess just enough to grab it with your fingers.
- Flip the iPad LCD like a page in a book, lifting near the camera and turning it over the home button end of the rear case.
- Lay the LCD down onto a clean, soft, lint-free surface to allow access to the display cables.

## Step 30 — Disconnect the battery



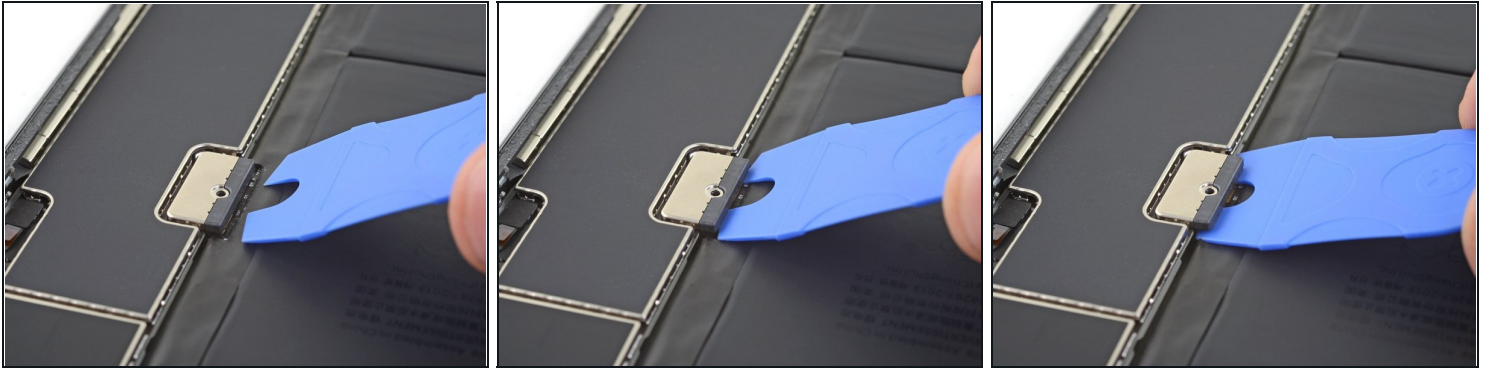
- Use a Phillips screwdriver to remove the single 2.3 mm-long screw securing the battery connector to the logic board.

## Step 31 — Battery connector information



- ① These photos show what the battery connector looks like underneath the logic board. Use these photos as a reference while you safely disconnect the battery.
- ① Notice that the battery connector has cantilever springs on the logic board that press against the battery contact pads. Since both the logic board and battery are glued down, you'll need to slide something thin and flexible between the contact points to disconnect the battery.

## Step 32 — Disconnect the battery

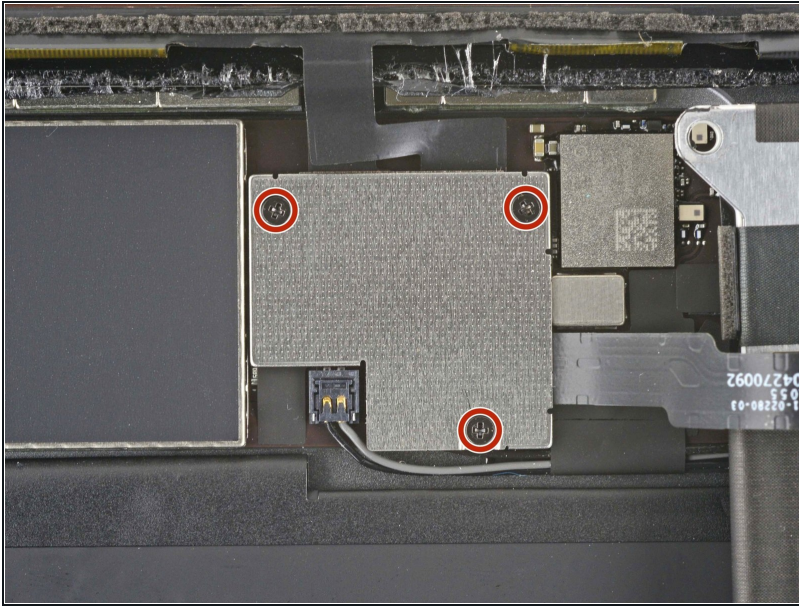


**⚠ Be careful when you isolate the battery using a battery blocker. The battery contacts are easily bent or broken, resulting in irreversible damage.**

- ① Ensure that the iFixit logo on the battery blocker is facing up.
- Slide the battery blocker underneath the logic board's battery connector at a 35 degree angle.
  - ① Don't push the battery blocker underneath the connector with excessive force. If you're having trouble fitting the battery blocker underneath the logic board, you can try [using a playing card](#) to disconnect the battery instead.
  - ① The battery blocker or playing card ideally should slide under the logic board without encountering any blockages. After insertion, it should rest at about a 15 degree angle.
- Leave the battery blocker in place as you work.

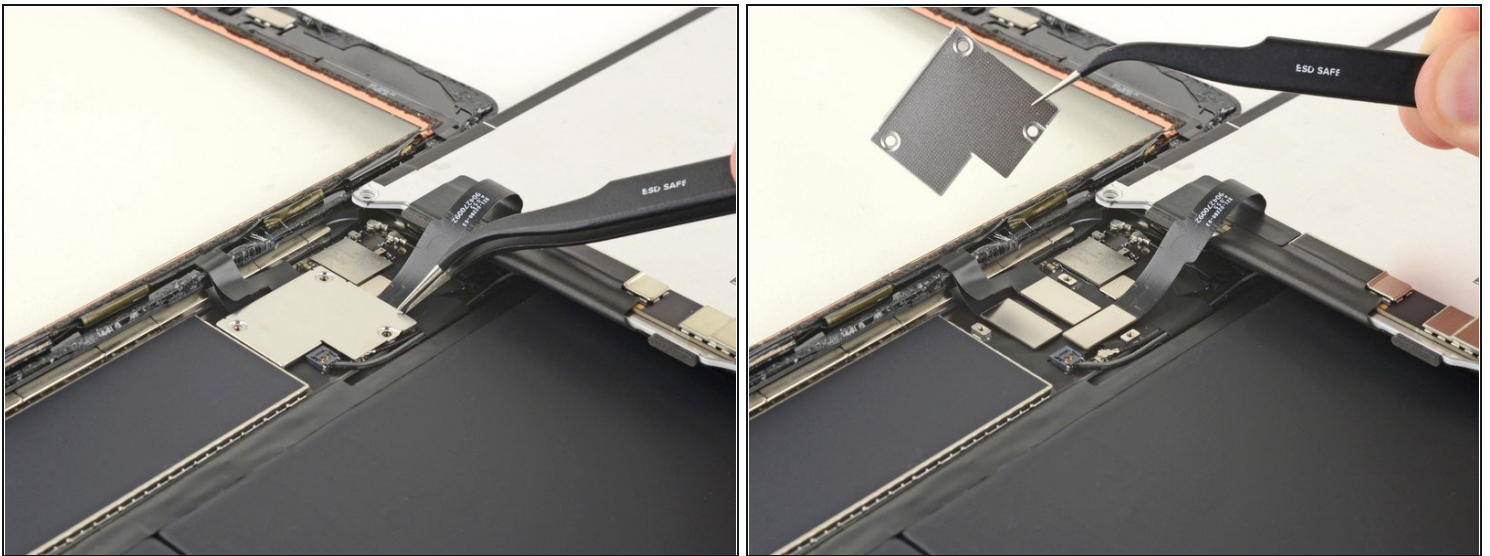


### Step 33 — Remove the display cable bracket



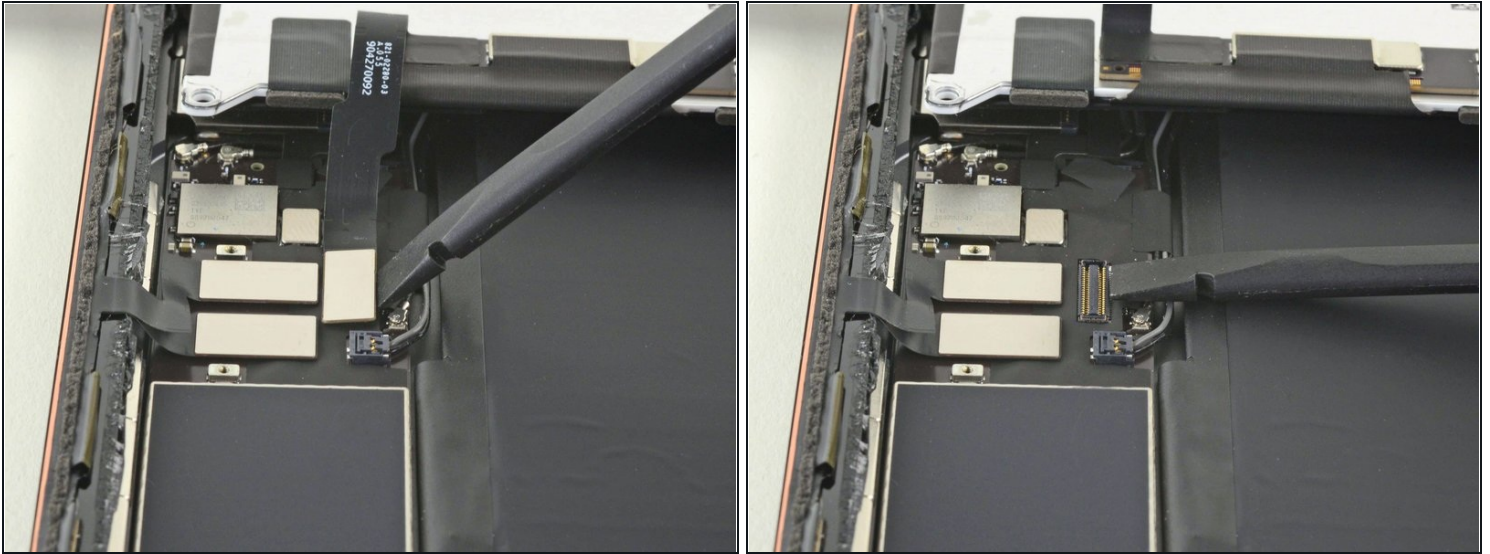
- Use a Phillips screwdriver to remove the three 1.4 mm-long screws securing the display cable bracket.

### Step 34



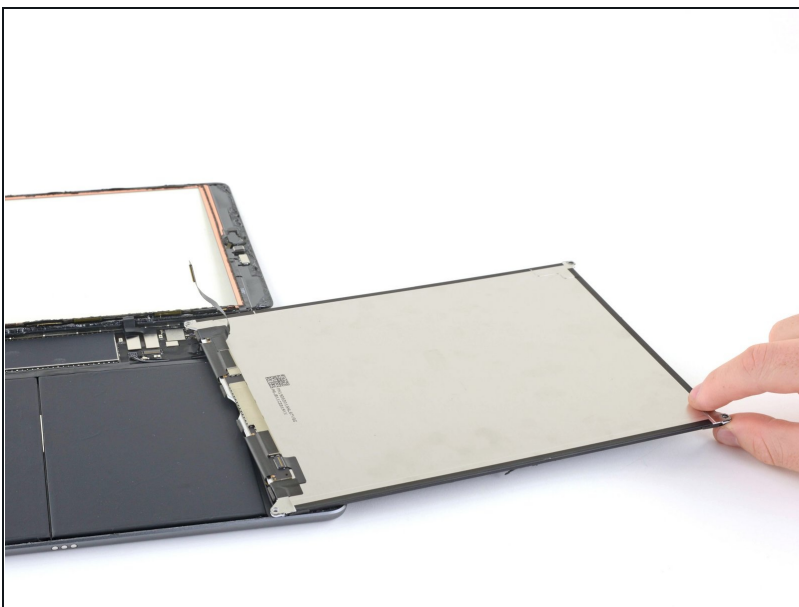
- Remove the display cable bracket.

## Step 35 — Disconnect the LCD



- Use the flat end of a spudger to disconnect the LCD cable by lifting straight up on the press connector.
- ☑ To re-attach [press connectors](#) like this one, carefully align and press down on one side until it clicks into place, then repeat on the other side. Do not press down on the middle. If the connector is misaligned, the pins can bend, causing permanent damage.

## Step 36



- Remove the LCD completely and rest it face down on a clean, soft, lint-free surface.

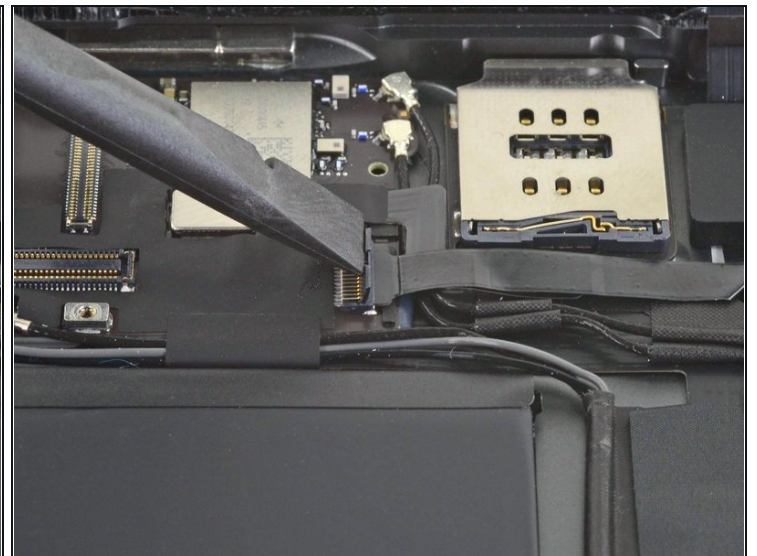
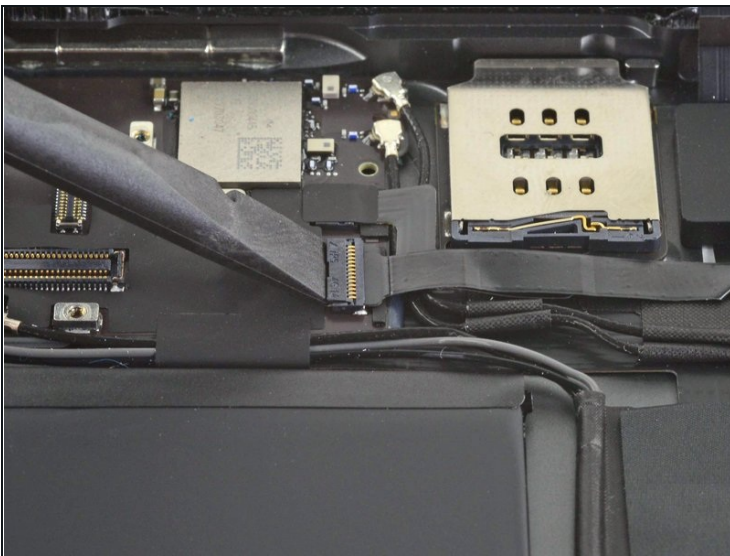


### Step 37 — Disconnect the home button



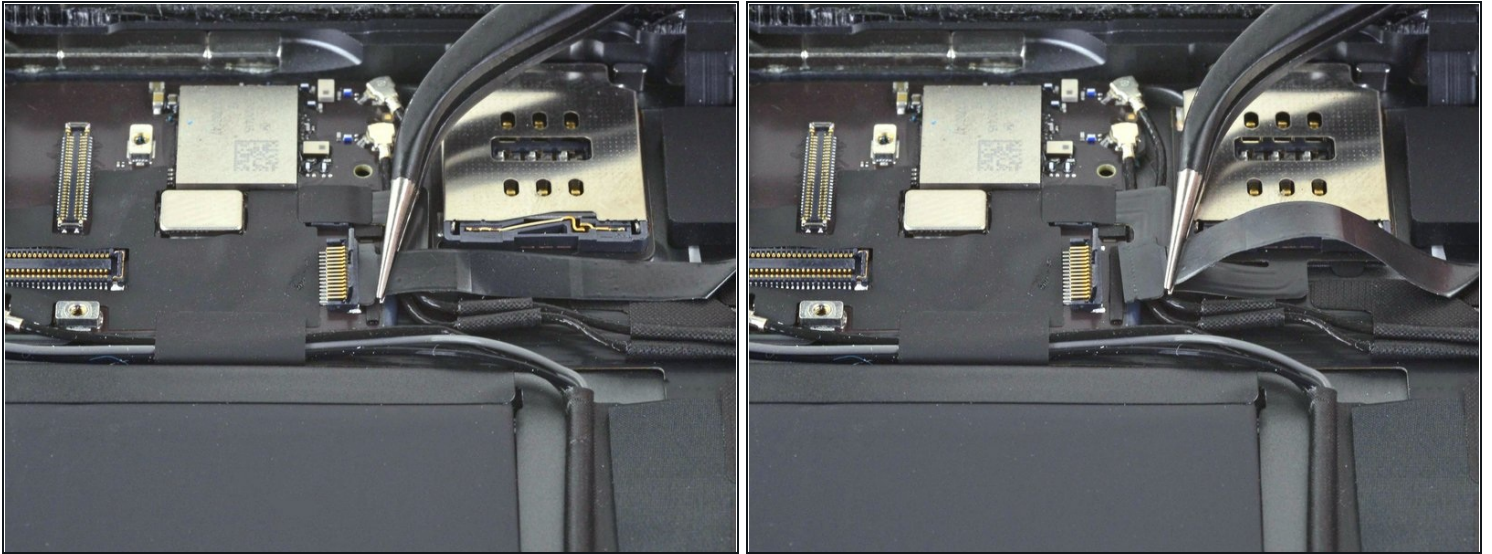
- Use a pair of tweezers to peel off the tape covering the home button cable ZIF connector.

### Step 38



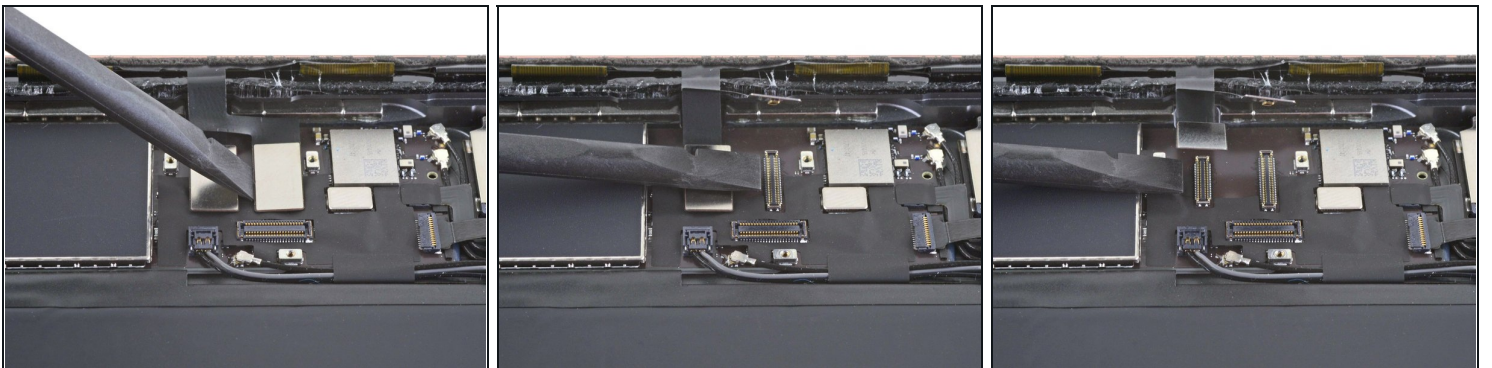
- Use the tip of a spudger, an opening tool, or your fingernail to flip up the small, hinged locking flap on the home button cable [ZIF connector](#).

## Step 39



- Use a pair of tweezers to carefully pull the home button ribbon cable straight out of the ZIF connector.

## Step 40 — Disconnect the display cables

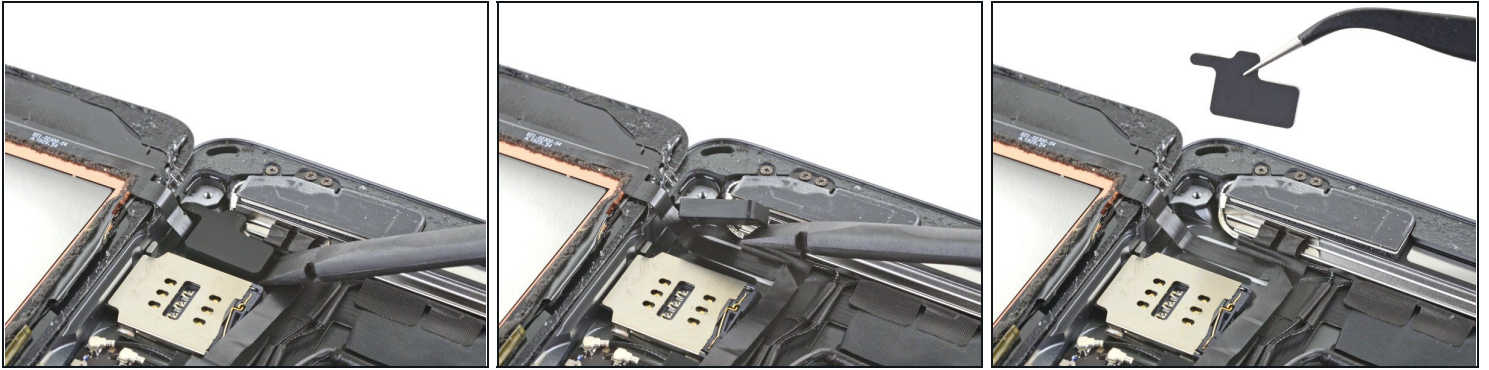


- Use the flat end of a spudger to disconnect the two digitizer cables by lifting straight up on the press connectors.

**⚠ To avoid damaging your iPad, pry only on the connectors themselves, not on the socket on the logic board.**

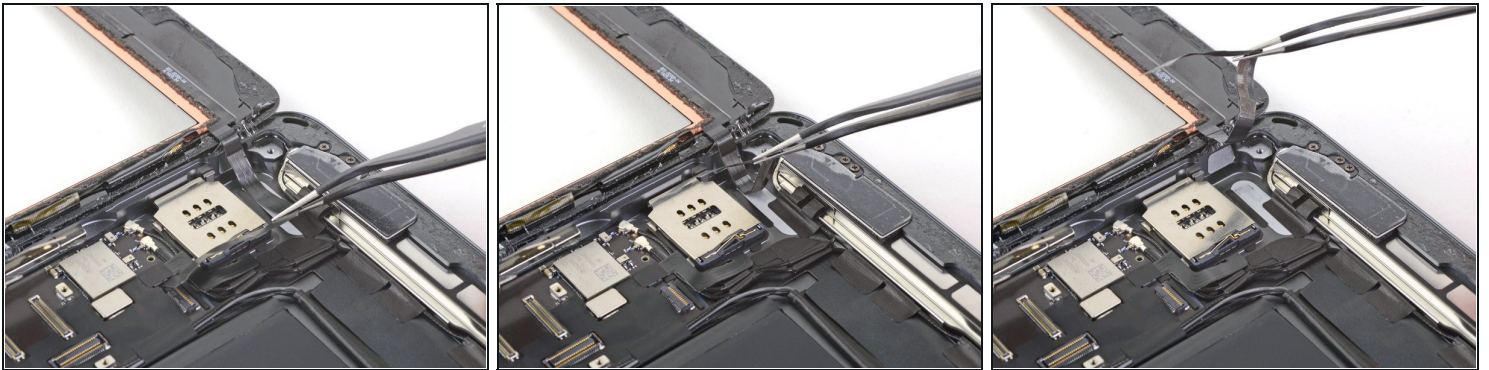


## Step 41 — Remove the vibration isolator



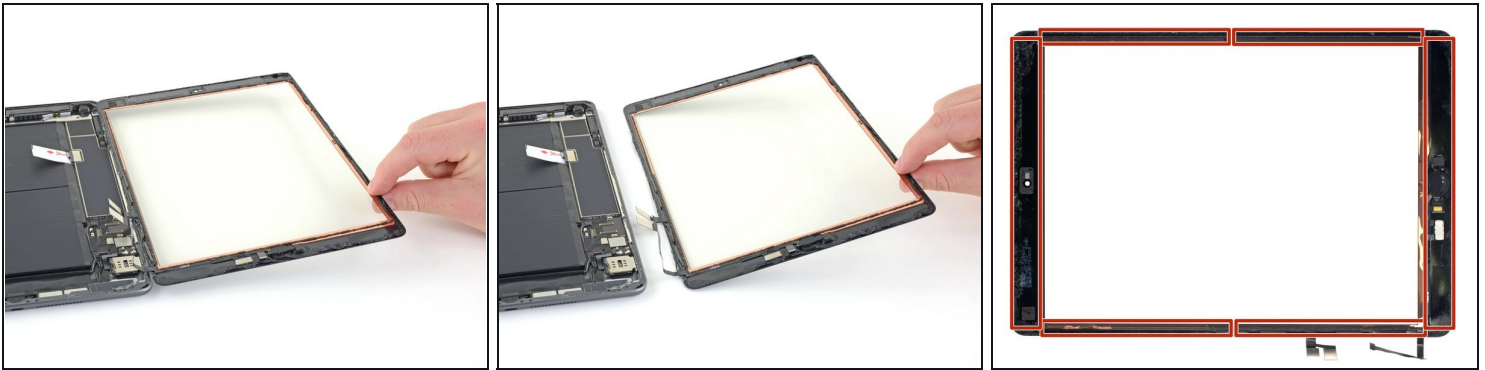
- Use the flat end of a spudger to pry up the vibration isolator below the SIM card reader.  
**⚠ Take care not to puncture or tear the home button ribbon cable.**
- Remove the vibration isolator.

## Step 42



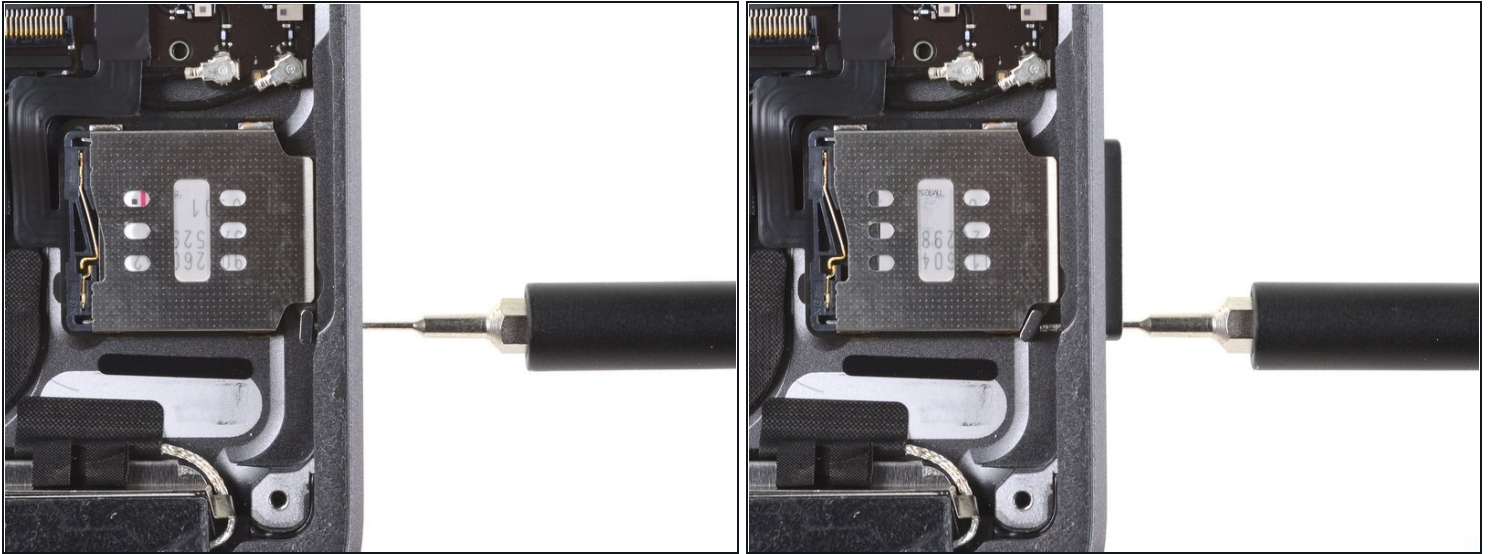
- Use a pair of tweezers to peel the home button cable away from the rear case.  
**i** The cable is secured with some light adhesive.

## Step 43 — Remove the front panel assembly



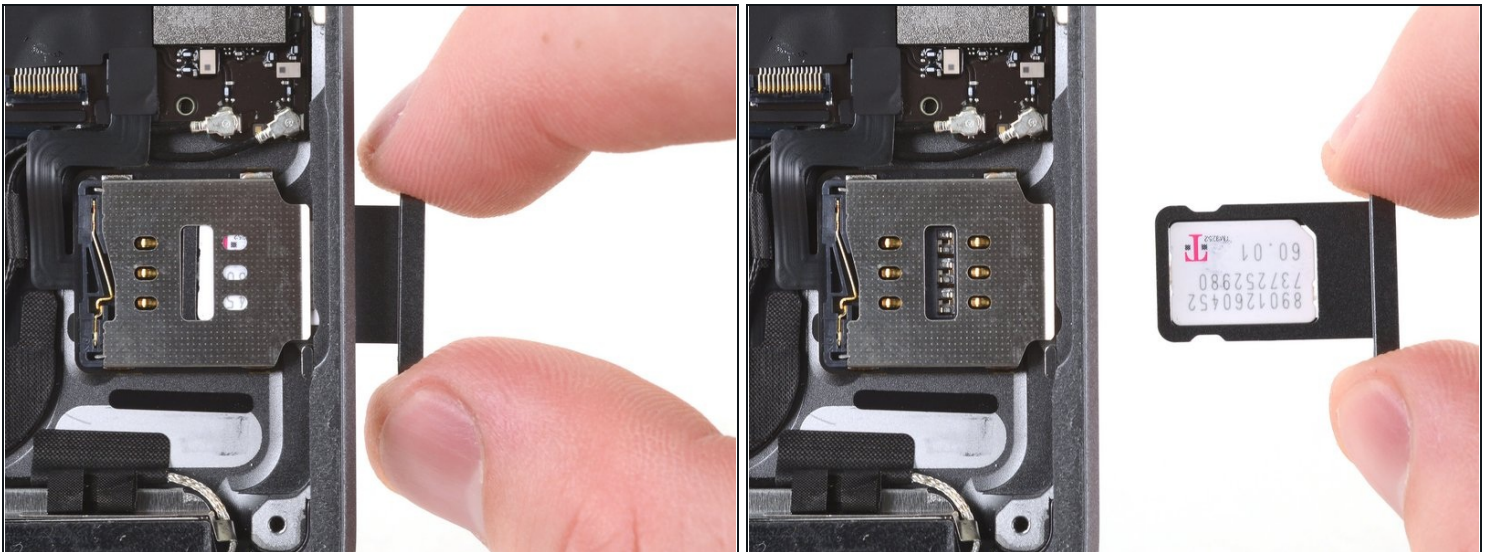
- Remove the front panel assembly.
  - ⓘ Use an opening pick to cut away any residual adhesive that may still be connecting the front panel assembly to the frame.
- If you experience "ghost" or "phantom" touch input issues with your new display, this can be resolved by adding a layer of very thin insulating tape, such as [Kapton \(polyimide\) tape](#), to the highlighted areas on the back of the panel. **iFixit replacement digitizers come with the proper insulation and should not require the addition of any tape.**
  - ⓘ Without the proper insulation, these areas of the digitizer can ground out against other components, causing touch input malfunction.
  - ⓘ The insulation is not visible to the naked eye, and is different from the foam dust barrier strips found on many iPads.
- ☑ During reassembly, before installing a display, remove any remaining adhesive from the iPad, and clean the glued areas with high concentration isopropyl alcohol (90% or greater) and a lint-free cloth. This helps prep the iPad for fresh adhesive and ensures that it will bond properly.
- ☑ Test your iPad's functions and install [pre-cut adhesive strips](#) to the back of the display using our [display adhesive application guide](#) before sealing it up.

## Step 44 — Eject the SIM card tray



- Insert a SIM eject tool, bit, or straightened paper clip into the SIM card tray hole.
- Press firmly to eject the SIM card tray.

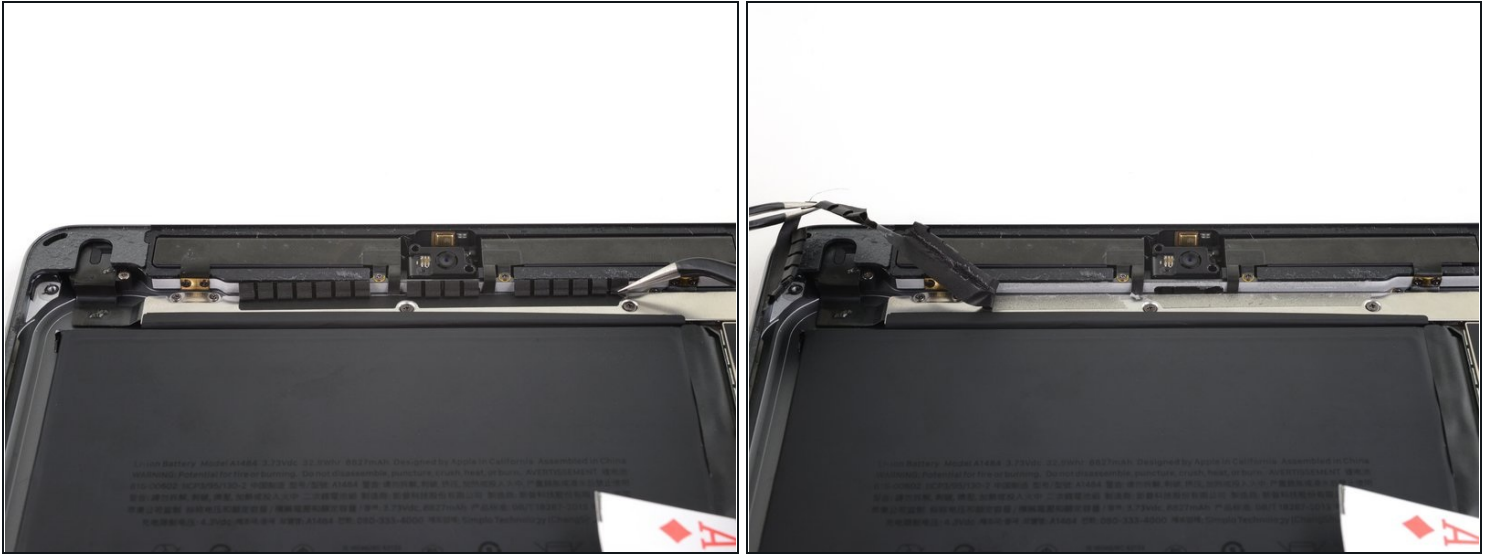
## Step 45



- Remove the SIM card tray from the iPad.



## Step 46 — Remove the upper component bracket



- Carefully peel the LCD buffer tape up off of the upper component bracket.

## Step 47



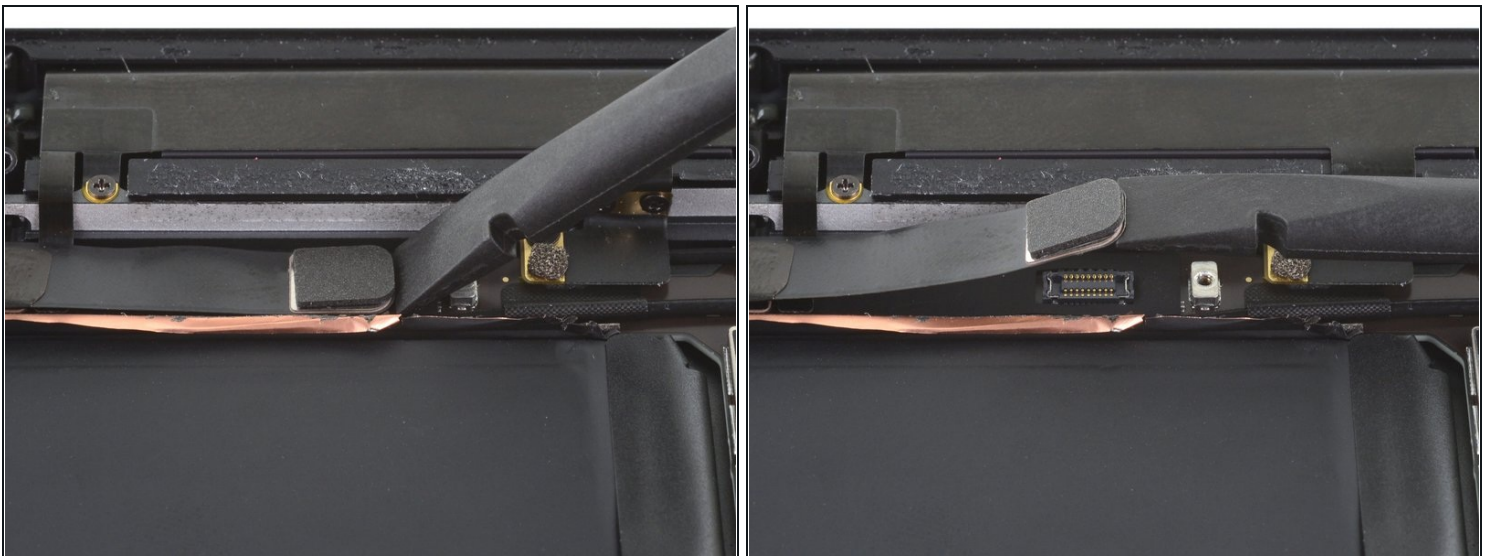
- Use a Phillips screwdriver to remove the five screws securing the upper component bracket.
  - Three 1.4 mm-long screws
  - Two 1.9 mm-long screws

## Step 48



- Use the pointed end of a spudger to lift up the upper component bracket until you can grip it with your fingers.
- Remove the upper component bracket.
  - ⓘ You may need to peel the upper component bracket off of some tape securing it to the logic board.

## Step 49 — Disconnect the front camera



- Use the flat end of a spudger to disconnect the front camera cable by lifting straight up on the press connector.



## Step 50 — Remove the front camera



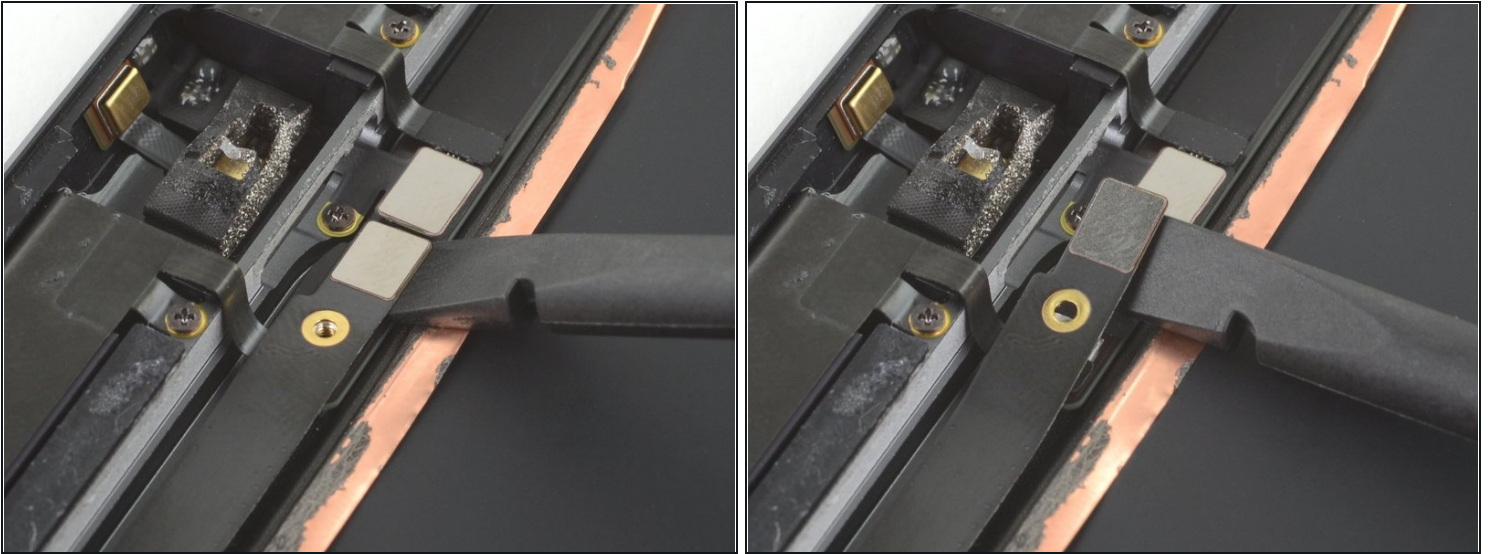
- Use a spudger to lift the front camera out of its recess until you can grip it with your fingers.
- Use the spudger to pull the adhesive foam pad away from the front camera.

## Step 51



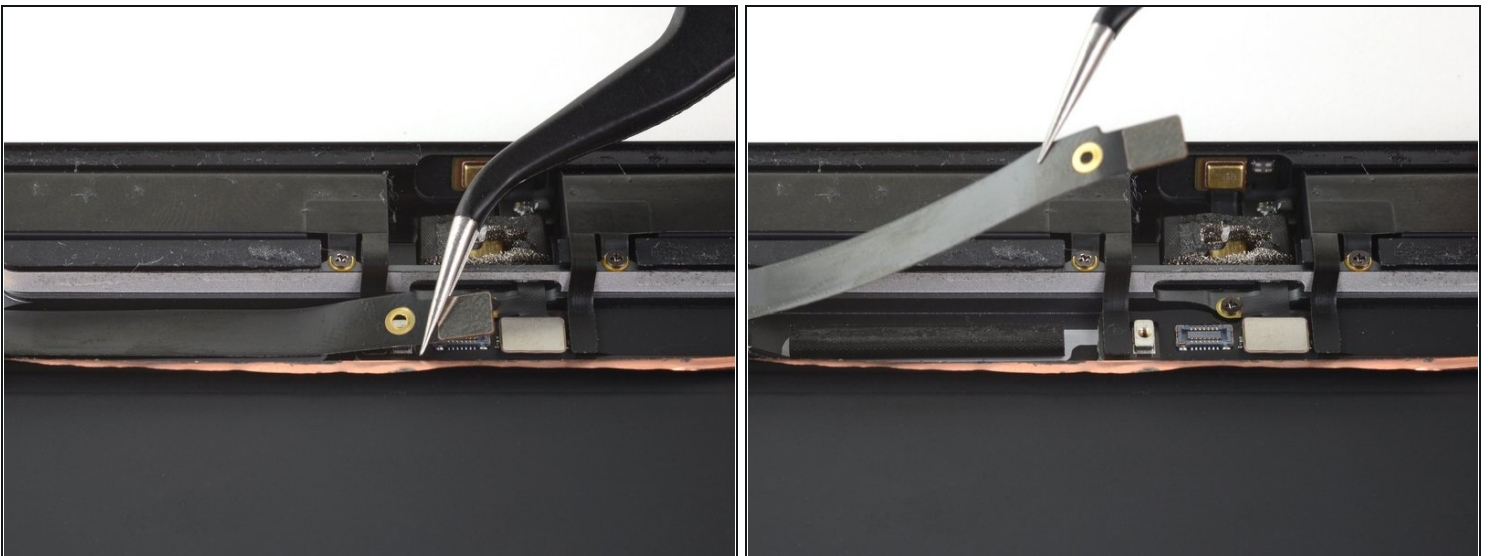
- Use a pair of tweezers to grip the front camera and rotate it to thread the cable through its slot in the rear case.
- Remove the front camera.

## Step 52 — Disconnect the headphone jack



- Use the flat end of a spudger to disconnect the headphone jack by lifting straight up on the press connector.

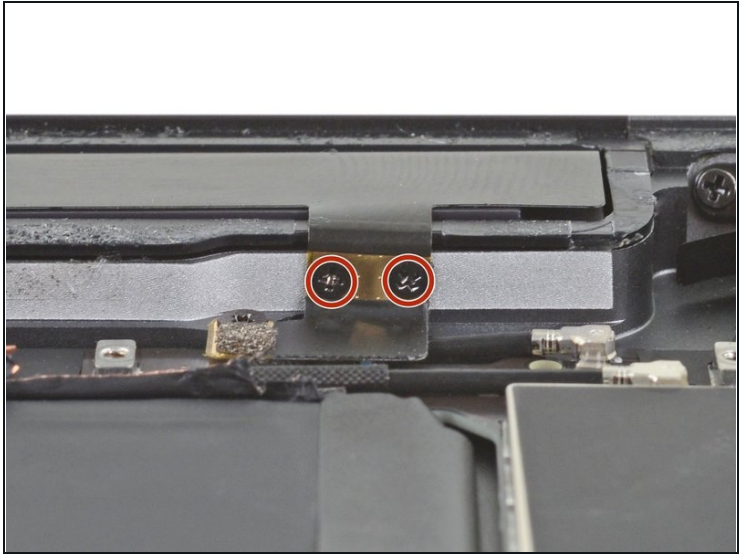
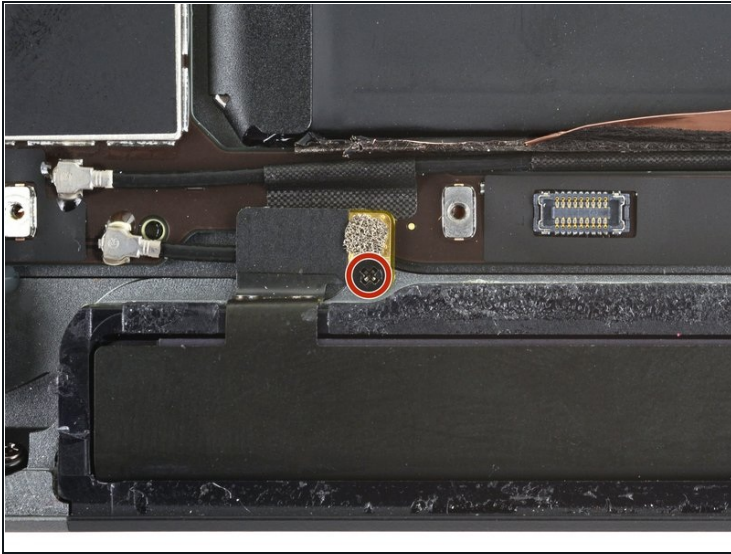
## Step 53



- Use a pair of tweezers to peel the headphone jack up from the logic board and fold the cable out of the way.

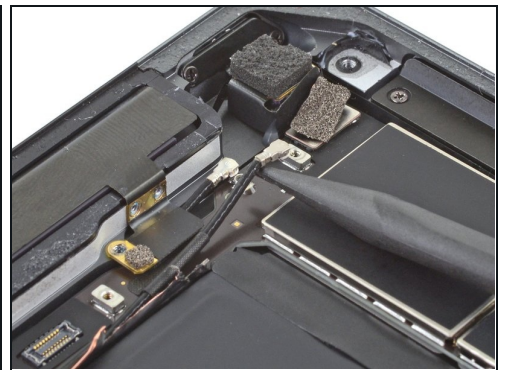
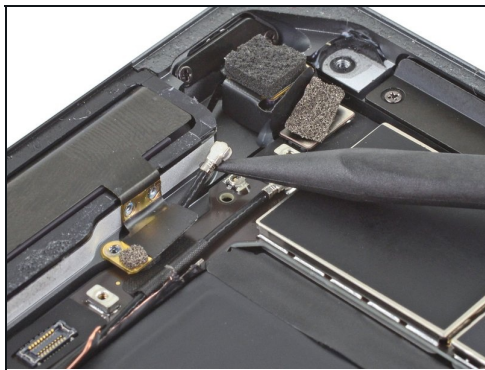
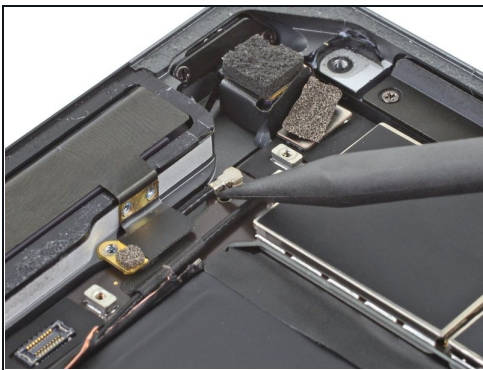


## Step 54 — Remove the right cellular antenna screws



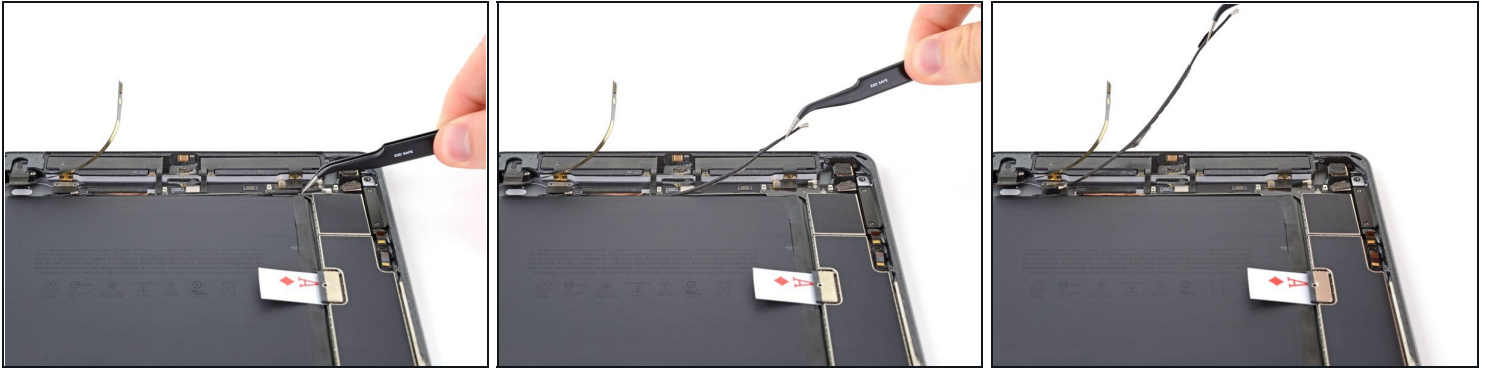
- Use a Phillips screwdriver to remove the three 1.4 mm-long screws securing the cellular antennas to the rear case.

## Step 55 — Disconnect the cellular antennas



- Use the pointed end of a spudger to disconnect the right cellular antenna coaxial cable by prying up as close to the connector as possible.
- Disconnect the left antenna cable.

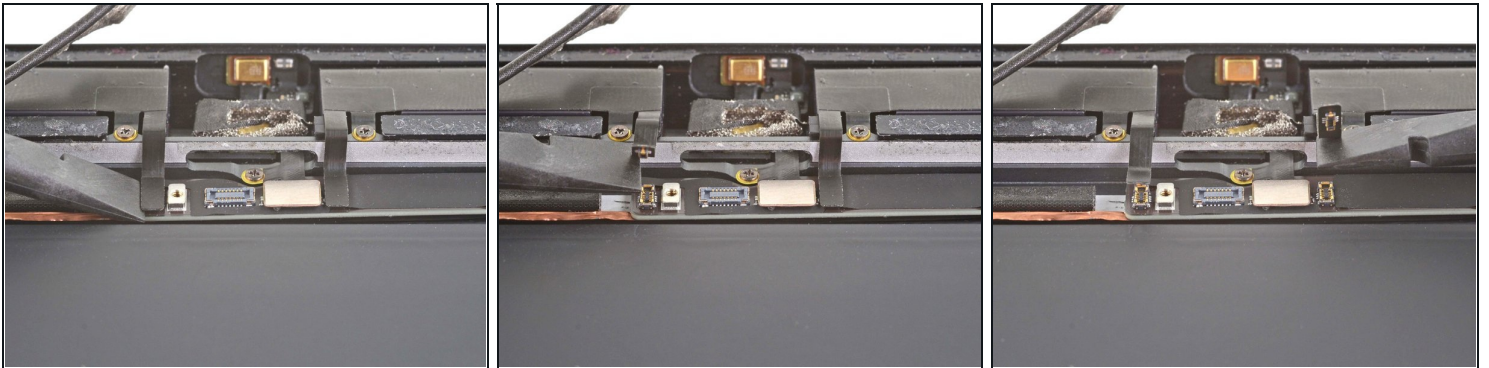
## Step 56



- Peel the left cellular antenna coaxial cable away from the rear case.

⚠ Grip the antenna cable by the cable itself and not at its connector. Pulling coaxial cables by their connectors can break them.

## Step 57



- Use the flat end of a spudger to disconnect both cellular antennas by lifting straight up on their press connectors.

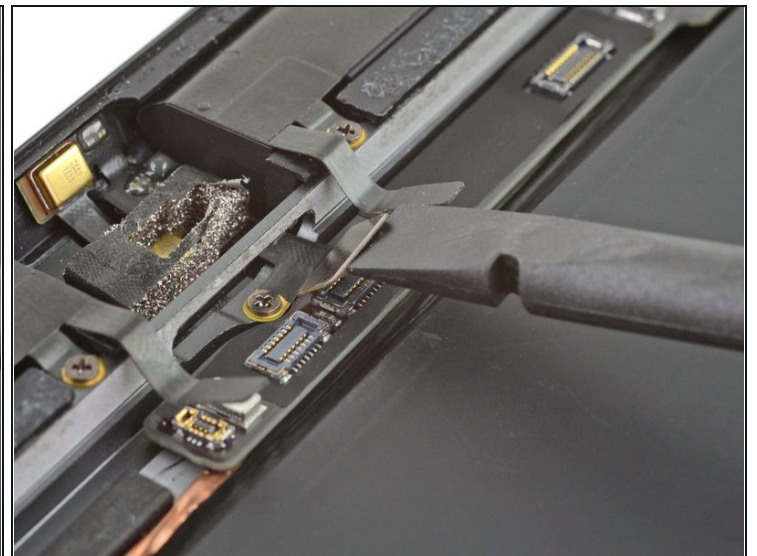
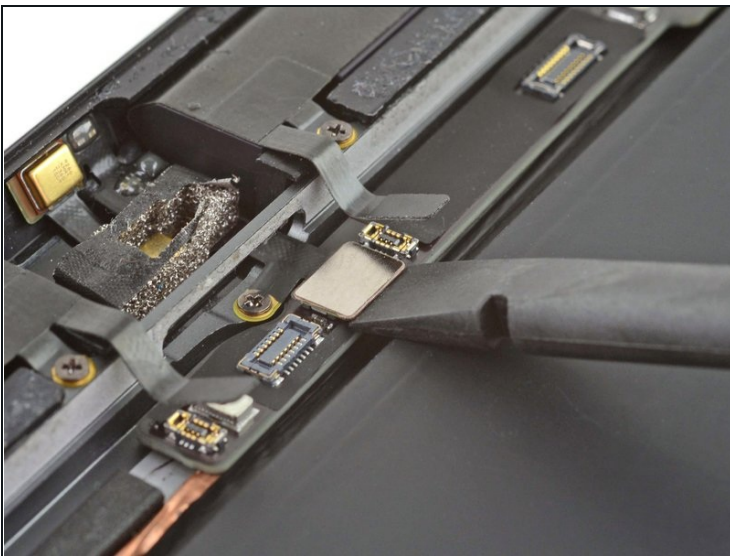


## Step 58 — Disconnect the rear camera



- Use the flat end of a spudger to disconnect the rear camera by lifting straight up on the press connector.

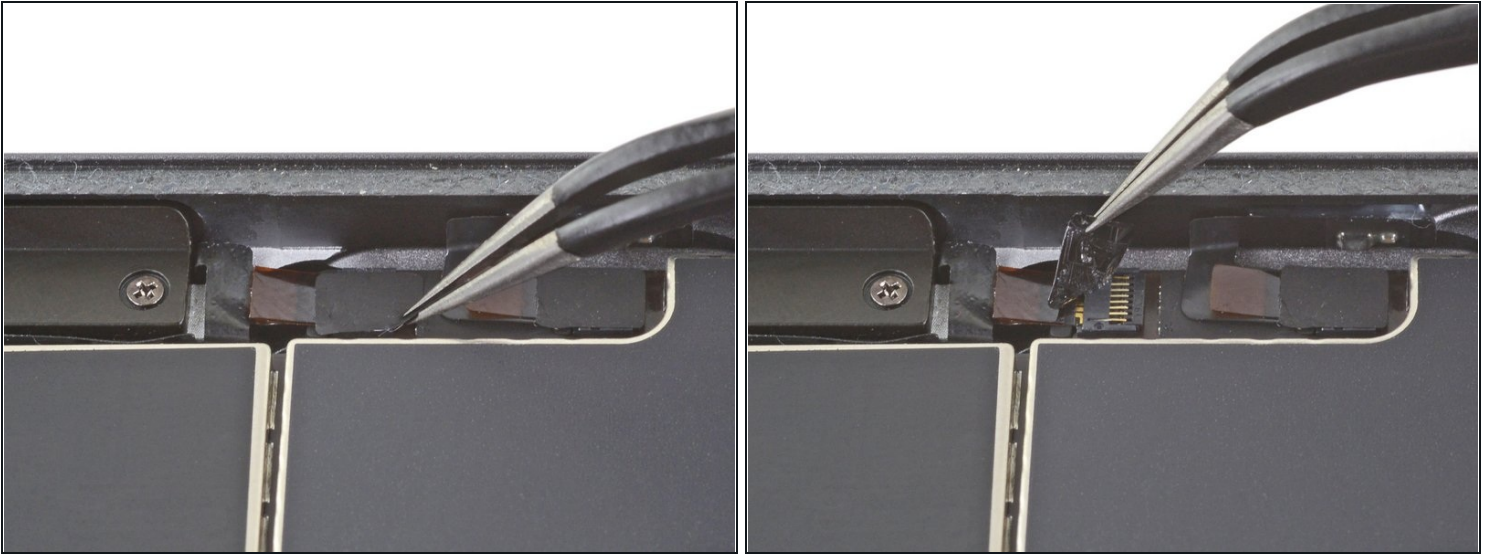
## Step 59 — Disconnect the microphone assembly



- Use the flat end of a spudger to disconnect the microphone assembly by lifting straight up on the press connector.

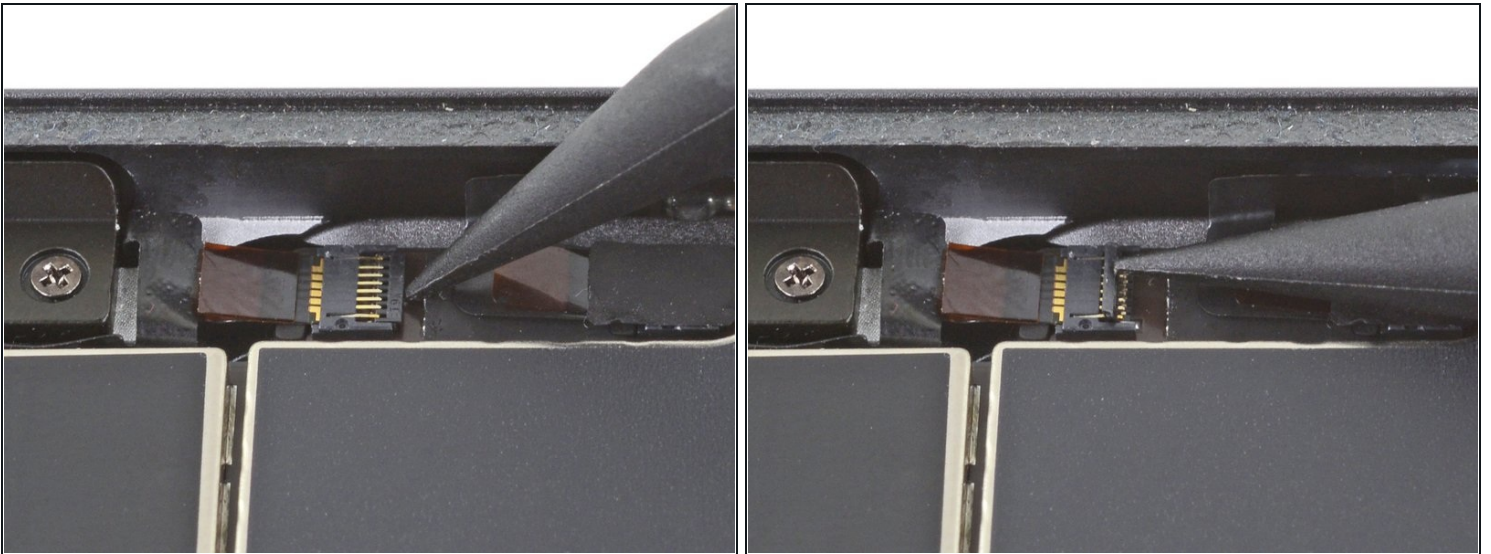


## Step 60 — Disconnect the button control cable



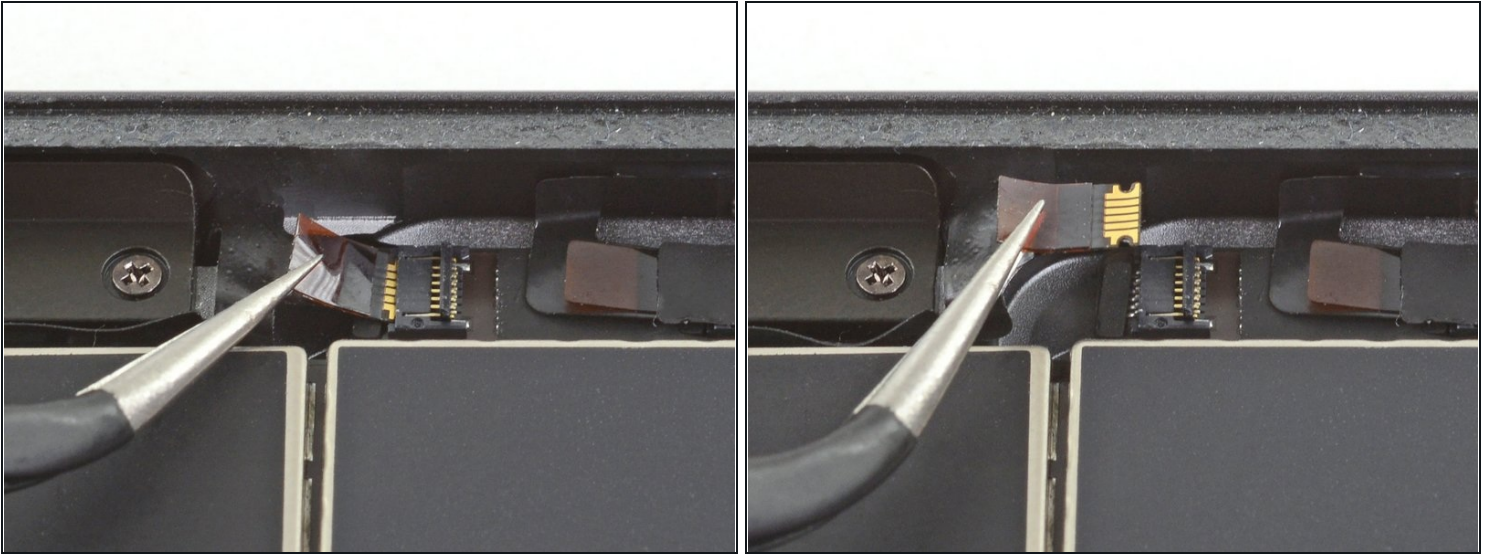
- Peel off any tape covering the [button control cable ZIF connector](#).

## Step 61



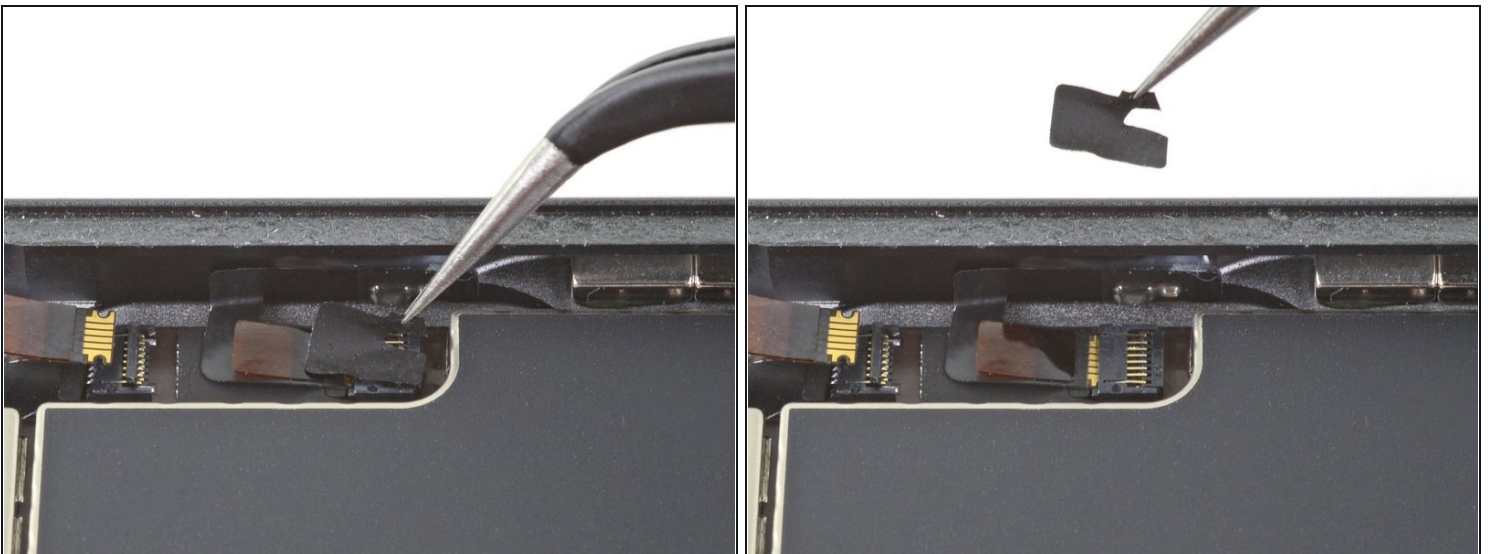
- Use the tip of a spudger, an opening tool, or your fingernail to flip up the small, hinged locking flap on the button control cable ZIF connector.

## Step 62



- Use a pair of tweezers to carefully pull the button control cable straight out of the ZIF connector.

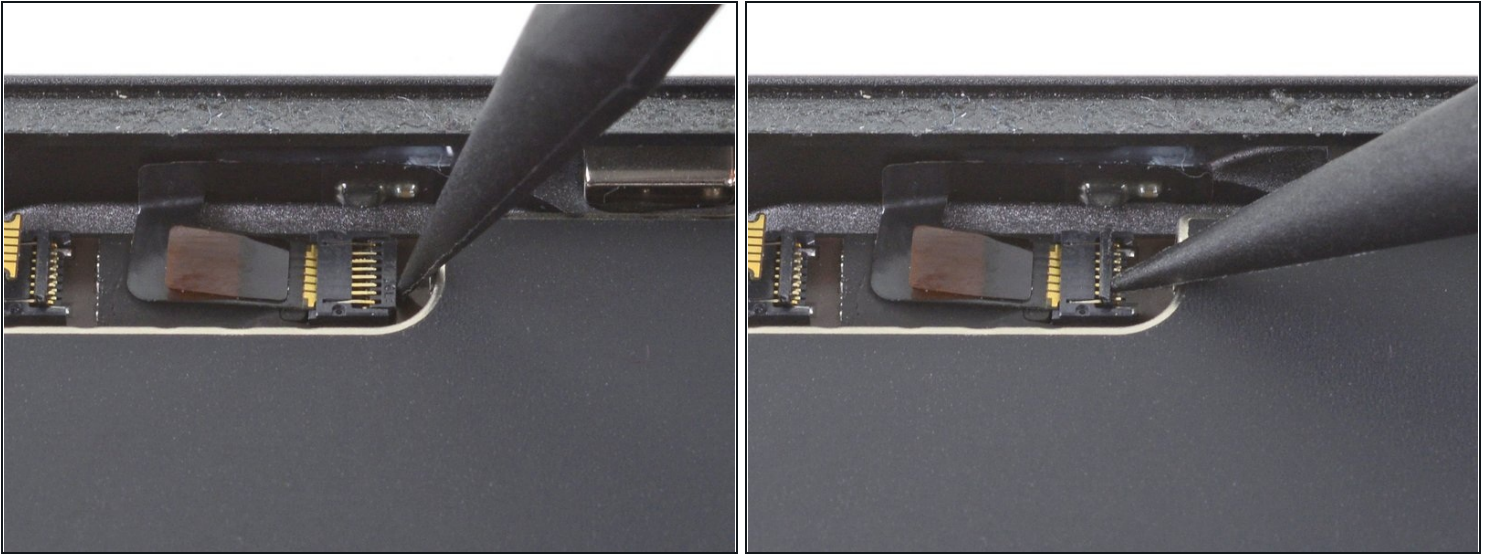
## Step 63 — Disconnect the Smart Cover sensor



- Peel off any tape covering the Smart Cover sensor cable ZIF connector.

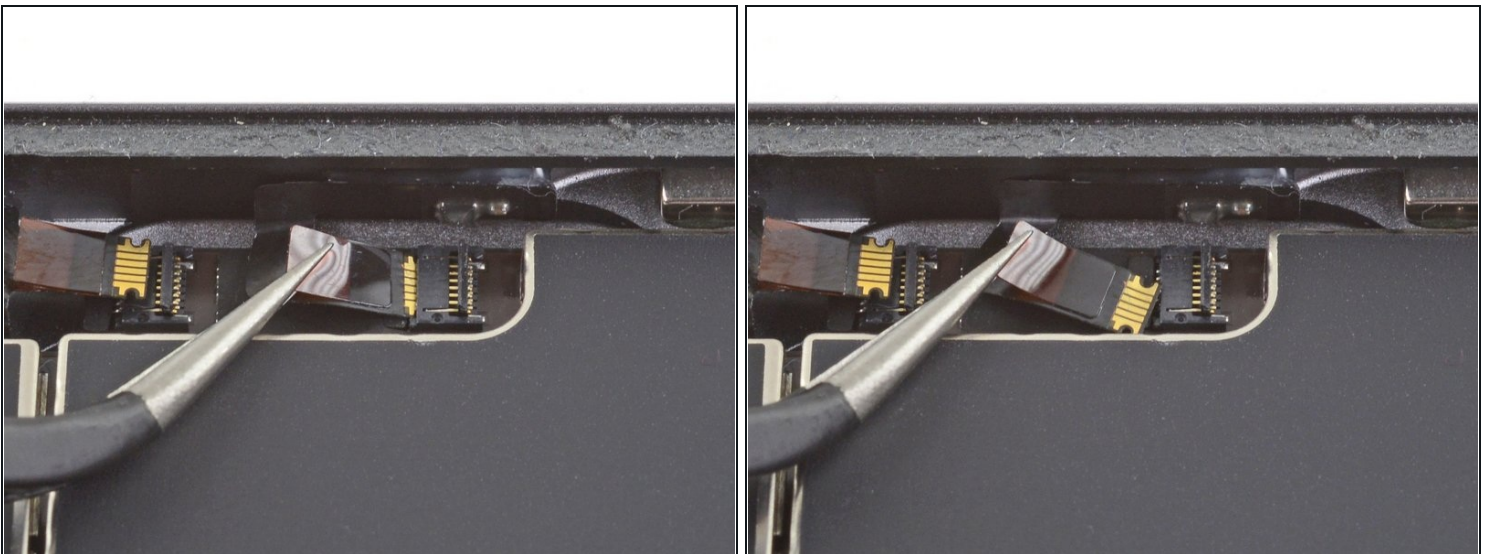


## Step 64



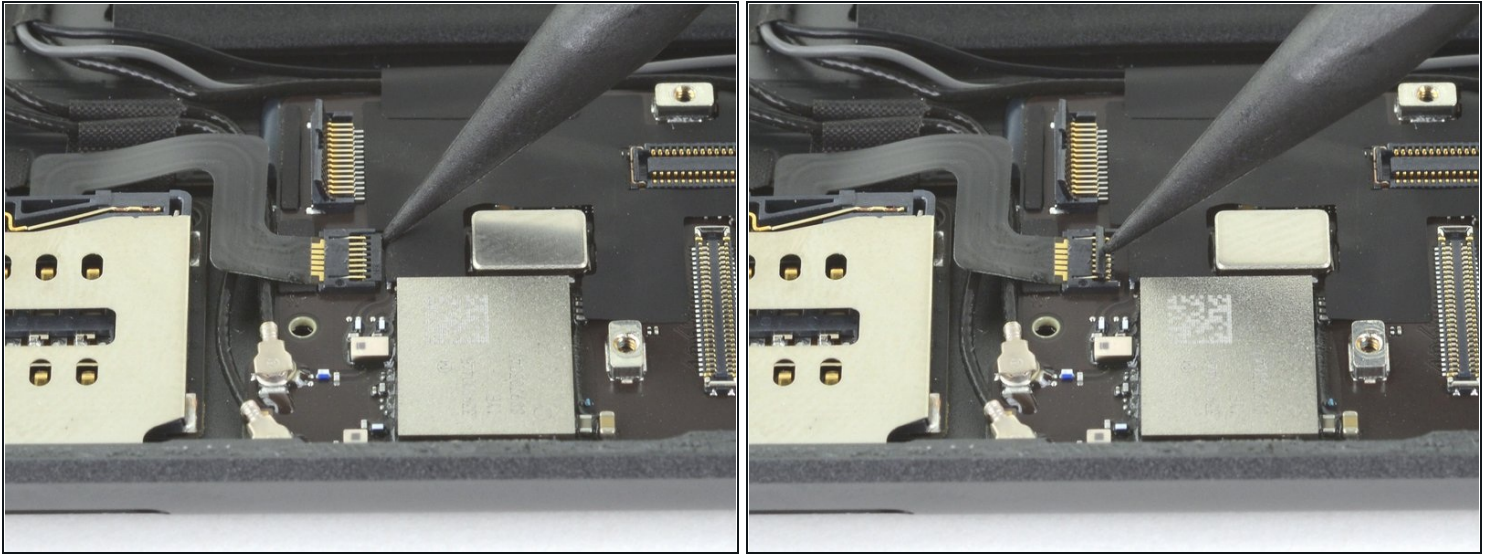
- Use the tip of a spudger, an opening tool, or your fingernail to flip up the small, hinged locking flap on the Smart Cover sensor cable ZIF connector.

## Step 65



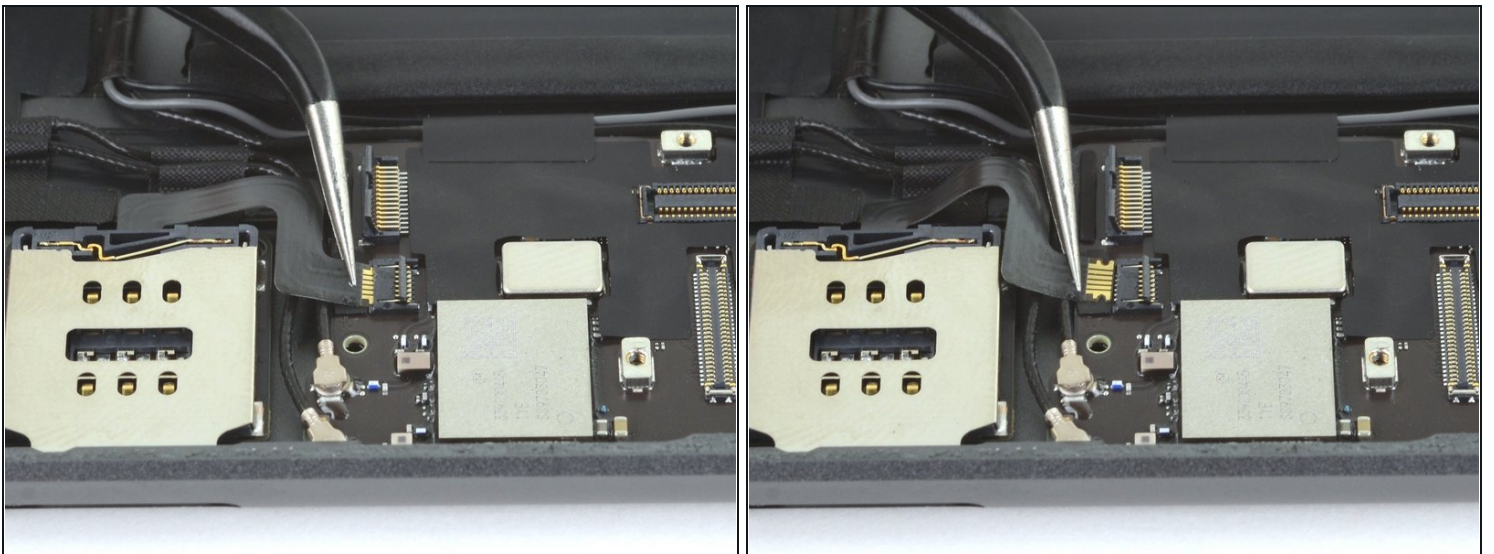
- Use a pair of tweezers to carefully pull the Smart Cover sensor cable straight out of the ZIF connector.

## Step 66 — Disconnect the SIM card reader



- Use the tip of a spudger, an opening tool, or your fingernail to flip up the small, hinged locking flap on the SIM card reader cable ZIF connector.

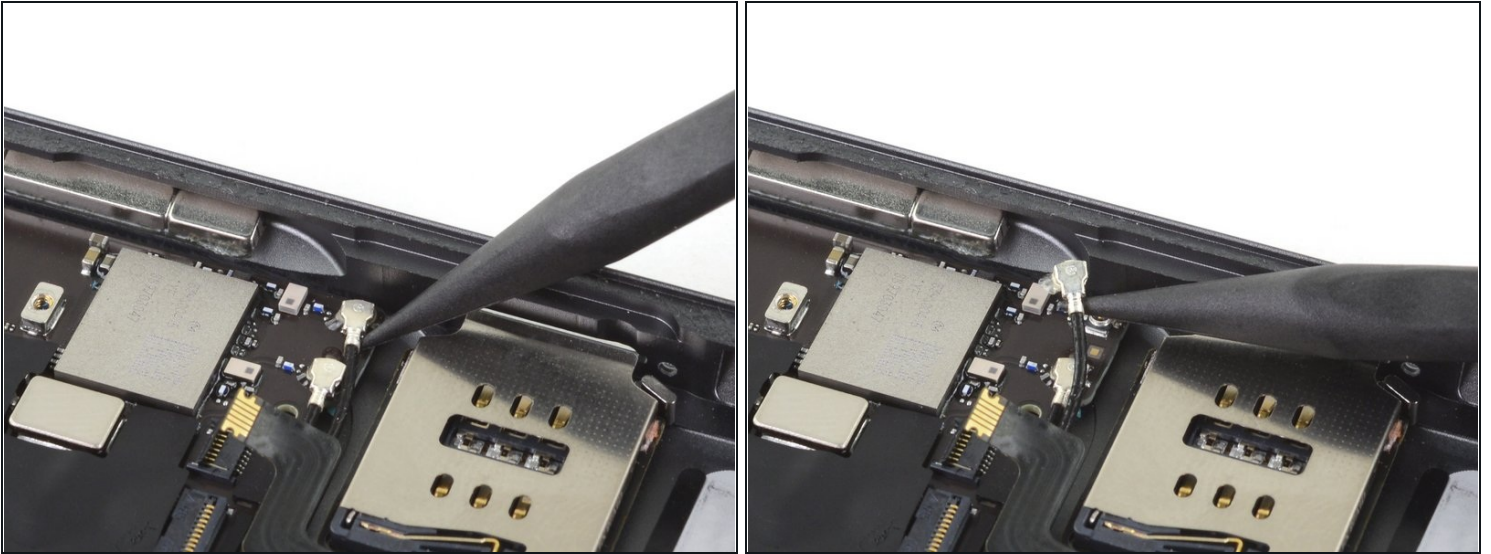
## Step 67



- Use a pair of tweezers to carefully pull the SIM card reader cable straight out of the ZIF connector.

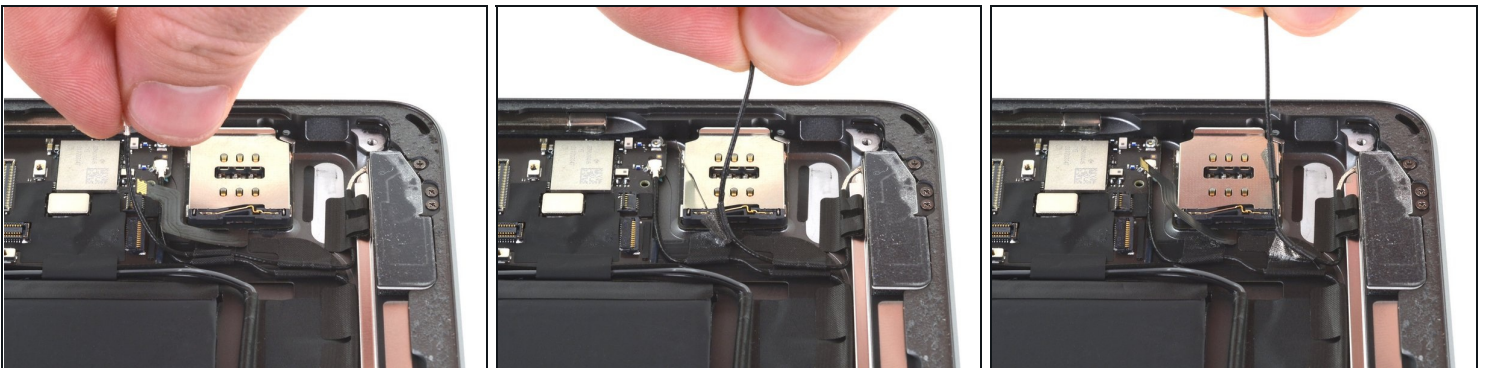


## Step 68 — Disconnect the antennas



- Insert the pointed end of a spudger under the right antenna cable and lift straight up to disconnect it.

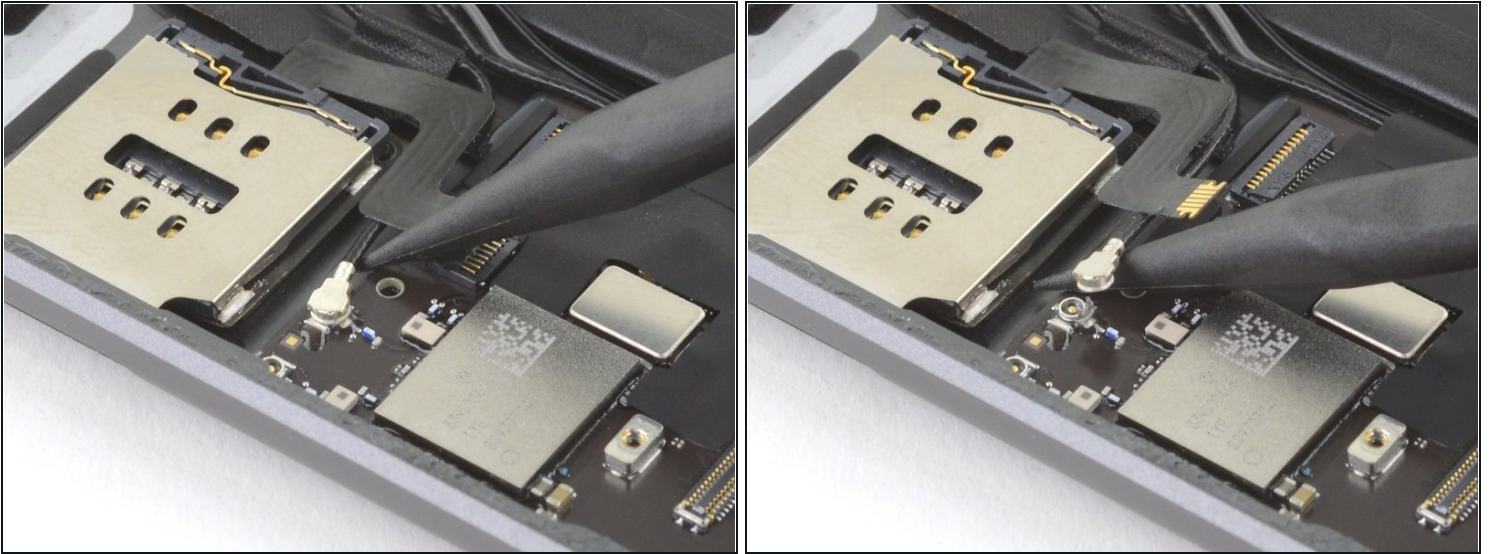
## Step 69



- Peel up the right antenna cable.  
**⚠ Grip the antenna cable by the cable itself and not at its connector. Pulling coaxial cables by their connectors can break them.**



## Step 70 — Disconnect the left antenna



- Insert the pointed end of a spudger under the left antenna cable and lift straight up to disconnect it.

## Step 71



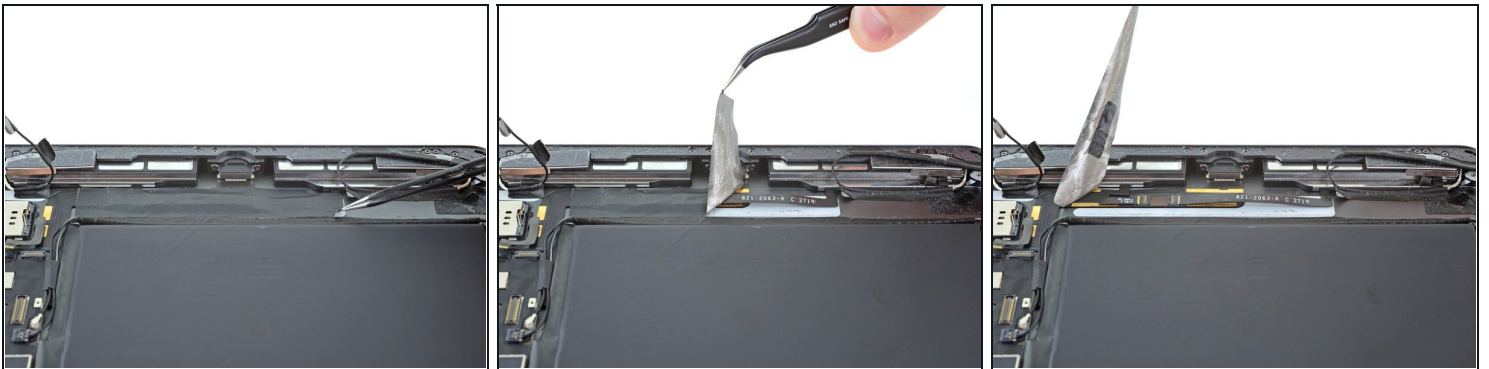
- Peel the left antenna cable away from the rear case, along the bottom edge of the iPad.

## Step 72 — Remove the vibration isolator



- Use the flat end of a spudger to pry up the vibration isolator at the bottom left corner of the iPad.
- Use a pair of tweezers to remove the vibration isolator.

## Step 73 — Disconnect the speakers



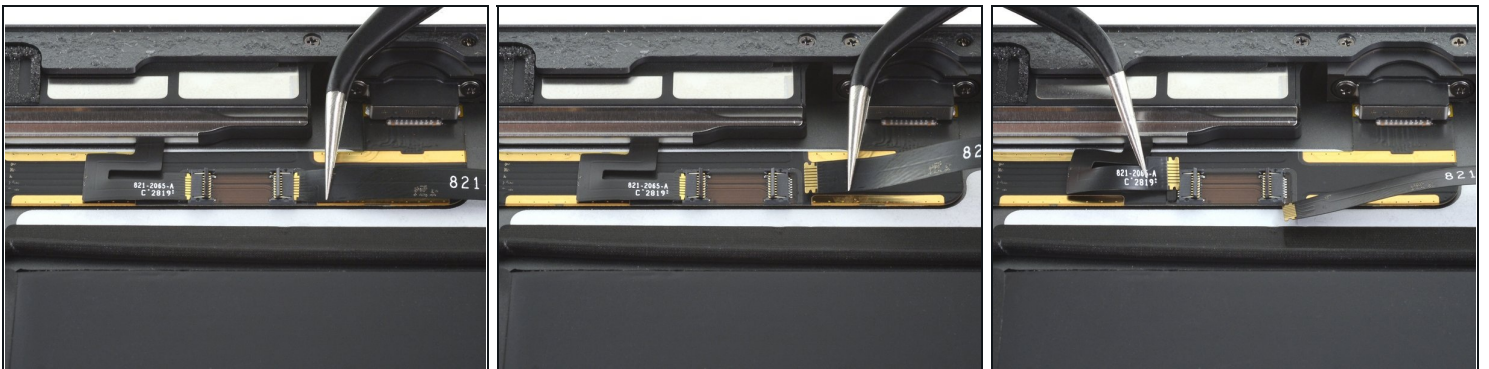
- Use a pair of tweezers, or your fingers, to peel up the tape covering the speaker connectors.

## Step 74



- Use the tip of a spudger, an opening tool, or your fingernail to flip up the small, hinged locking flap on both the left and right speaker cable ZIF connectors.

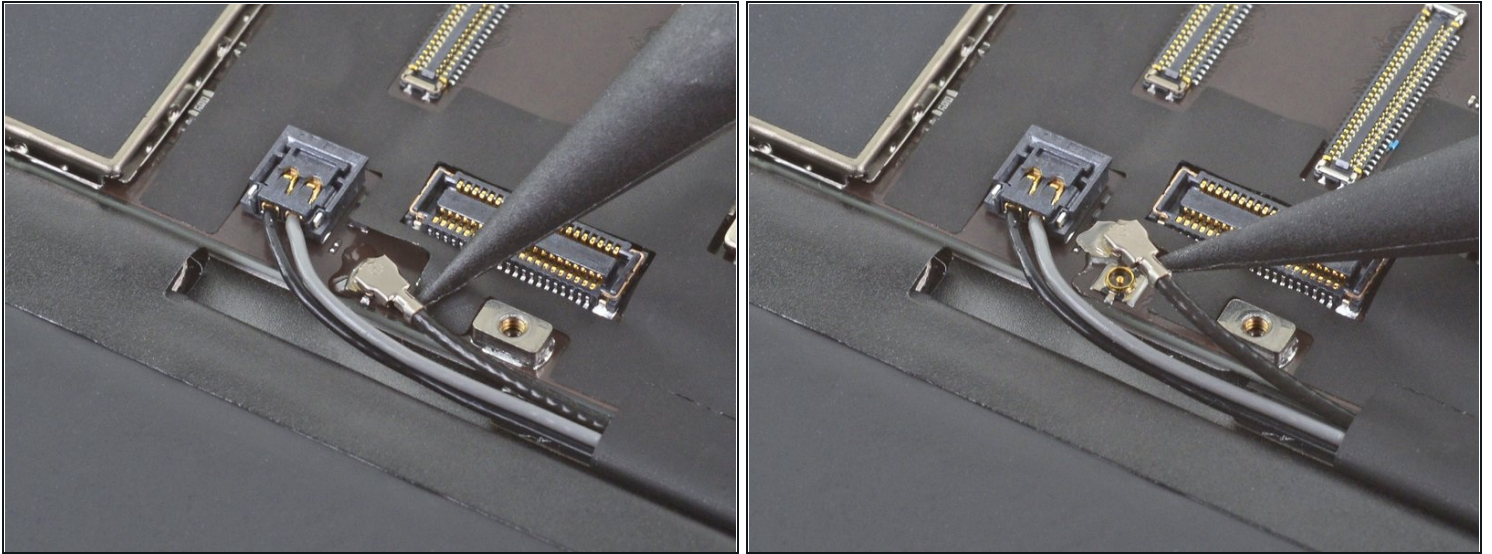
## Step 75



- Use a pair of tweezers to carefully pull the left and right speaker cables straight out of their respective ZIF connectors.

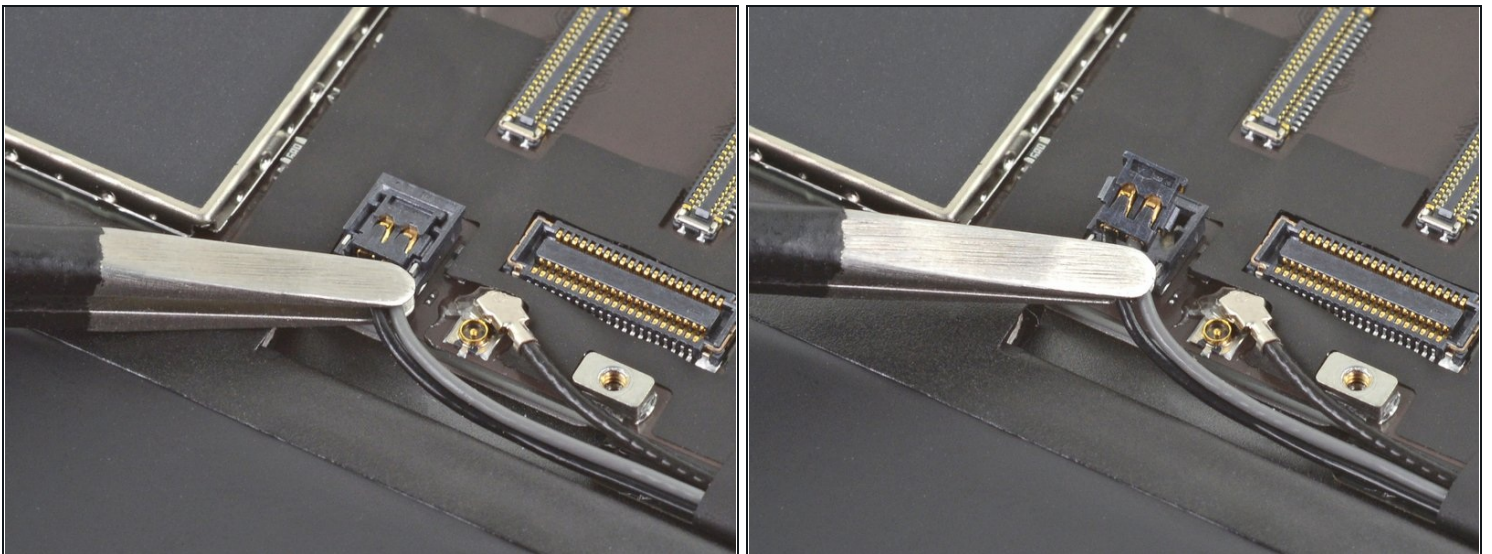


## Step 76 — Disconnect the Smart Connector



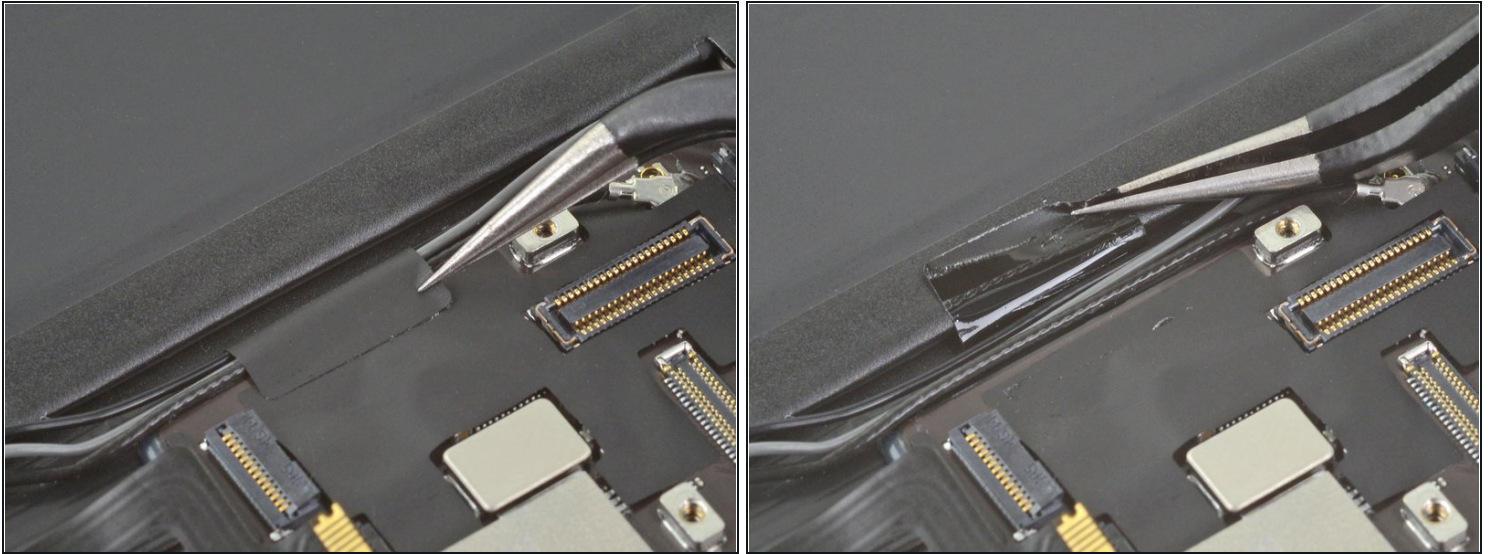
- Use the pointed end of a spudger to disconnect the Smart Connector coaxial cable by prying up as close to the connector as possible.

## Step 77



- Use a pair of tweezers to disconnect the Smart Connector cable connector by lifting straight up.

## Step 78



- Use a pair of tweezers to peel back the tape securing the Smart Connector cables to the rear case.

## Step 79



- Peel the Smart Connector cables away from the rear case.



## Step 80 — Loosen the SIM card reader's adhesive



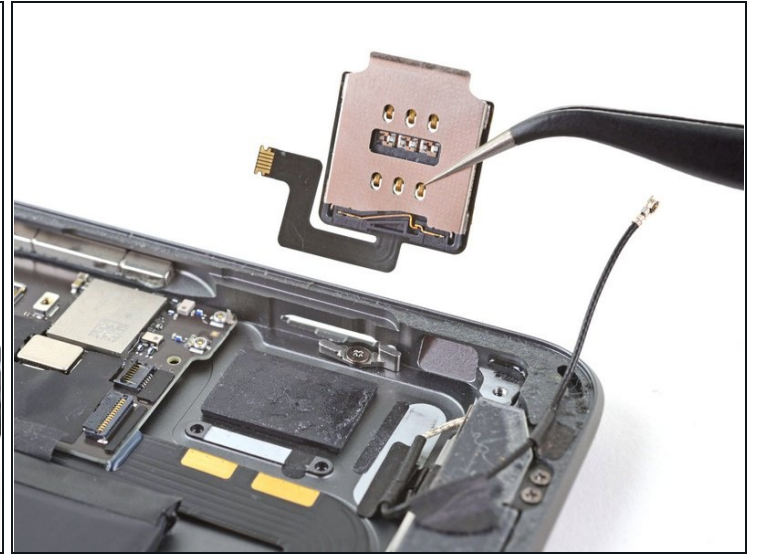
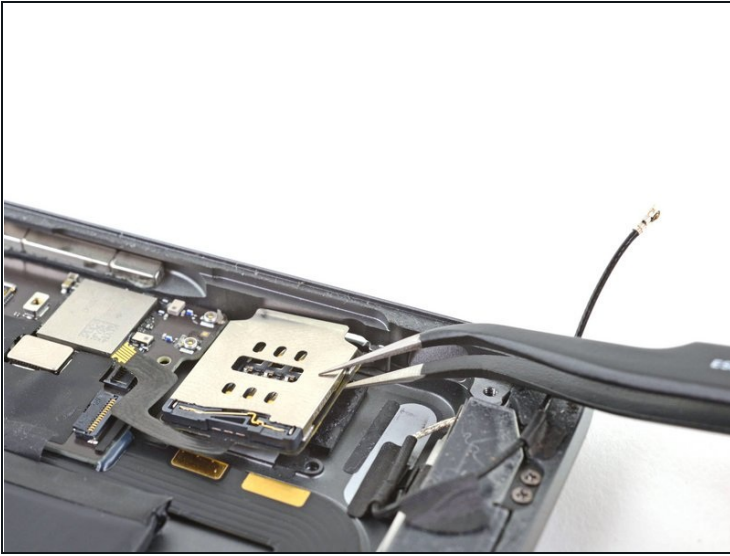
- Heat an iOpener and apply it to the bottom left corner of the rear case to soften the SIM card reader's adhesive for thirty seconds.

## Step 81 — Remove the SIM card reader



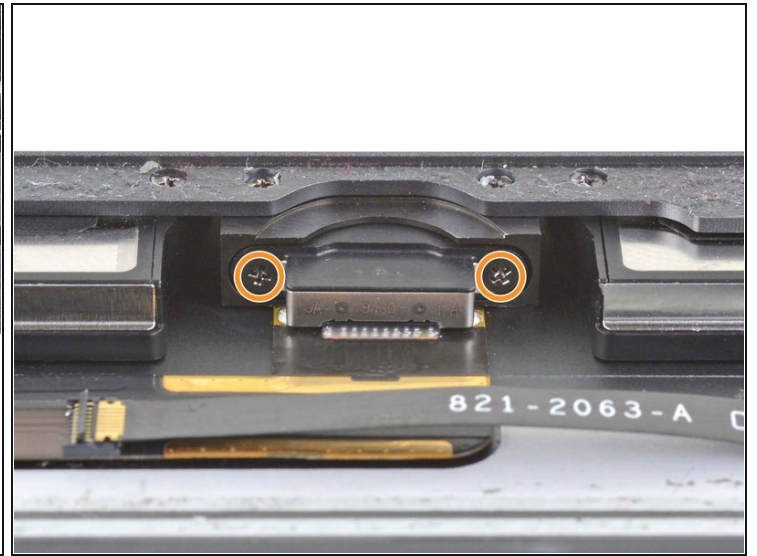
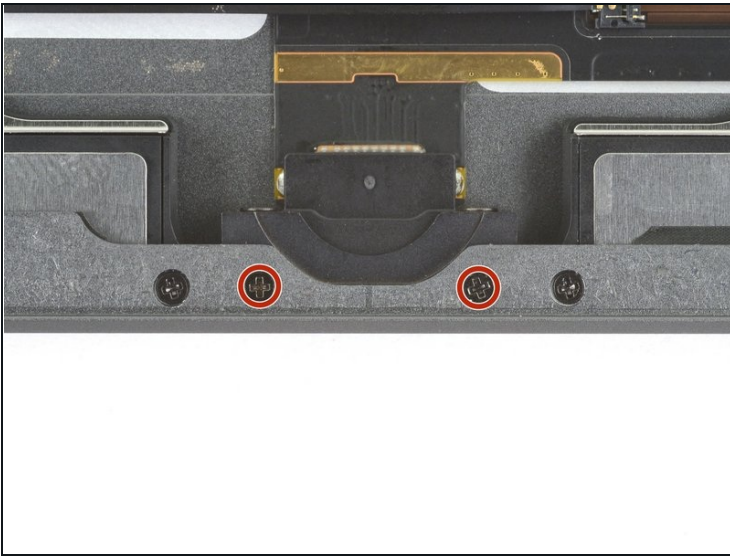
- Use an opening tool to pry up on the bottom edge of the SIM card reader with a slow and steady force.
  - ⓘ If the SIM card reader feels extra stuck, apply more heat and try again.

## Step 82



- Remove the SIM card reader.

## Step 83 — Disconnect the charging port



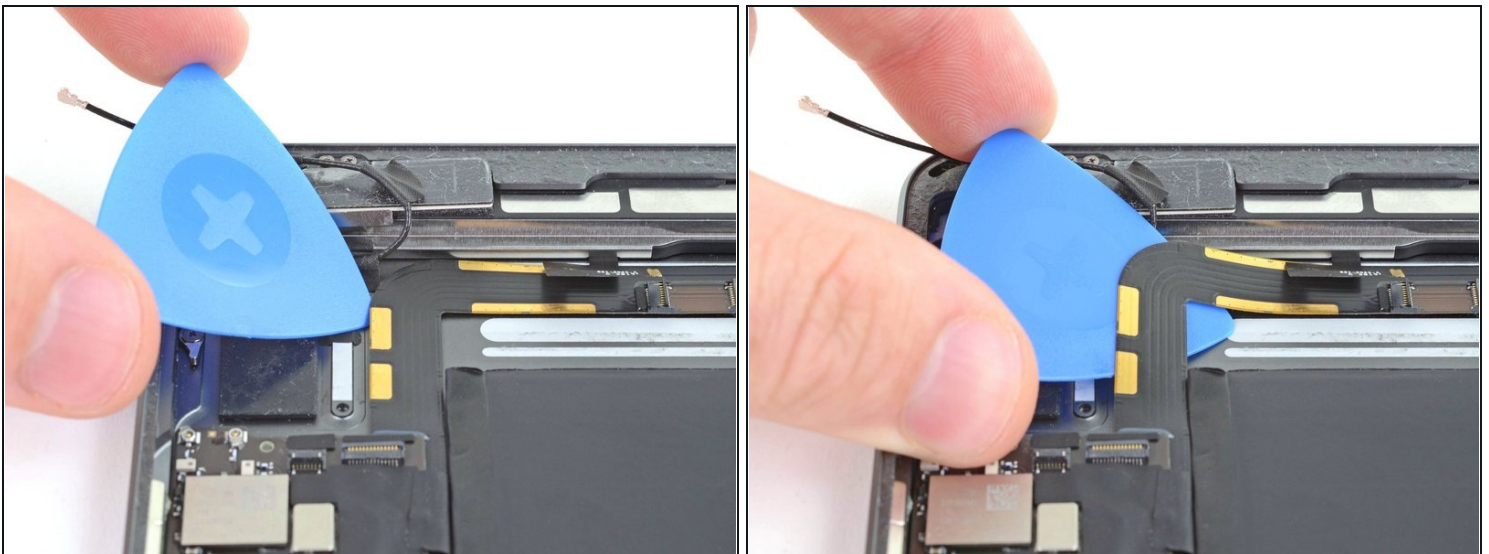
- Use a Phillips screwdriver to remove the four 2.2 mm-long screws securing the charging port to the rear case.
  - Two 2.2 mm-long screws
  - Two 3.2 mm-long screws

## Step 84 — Loosen the adhesive



- Heat an iOpener and apply it to the bottom, top, and logic board side of the iPad for thirty seconds in each location.

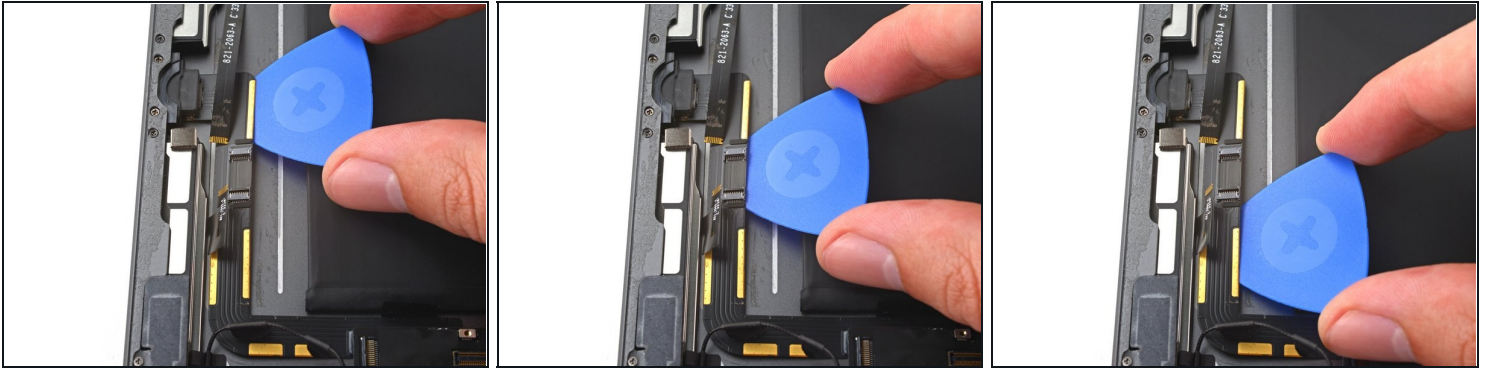
## Step 85 — Separate the charging port cable's adhesive



- Insert an opening pick under the charging port cable near the logic board and slide it toward the charging port to slice the adhesive.



## Step 86



- Insert an opening pick under the charging port cable near the charging port and slide it towards the logic board to cut the adhesive.

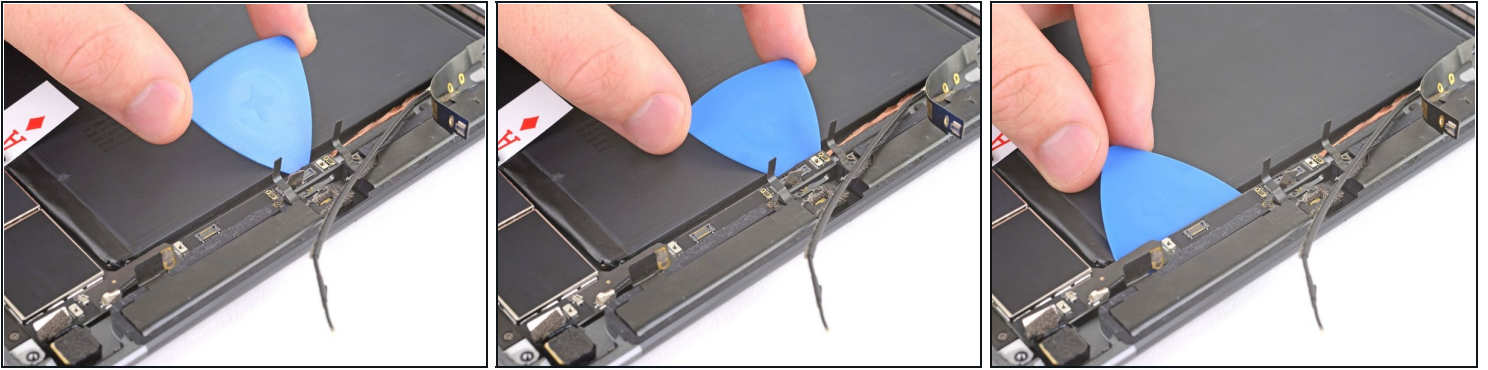
## Step 87



- Pull the charging port out of its slot in the rear case.

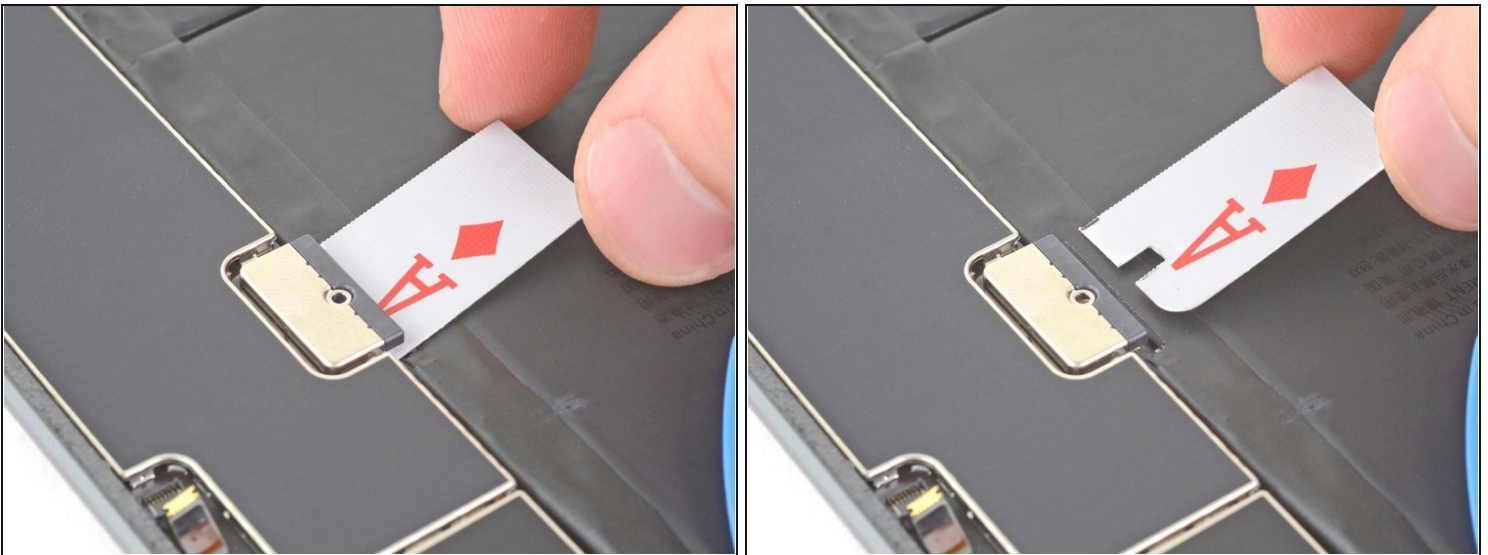


## Step 88 — Remove the logic board



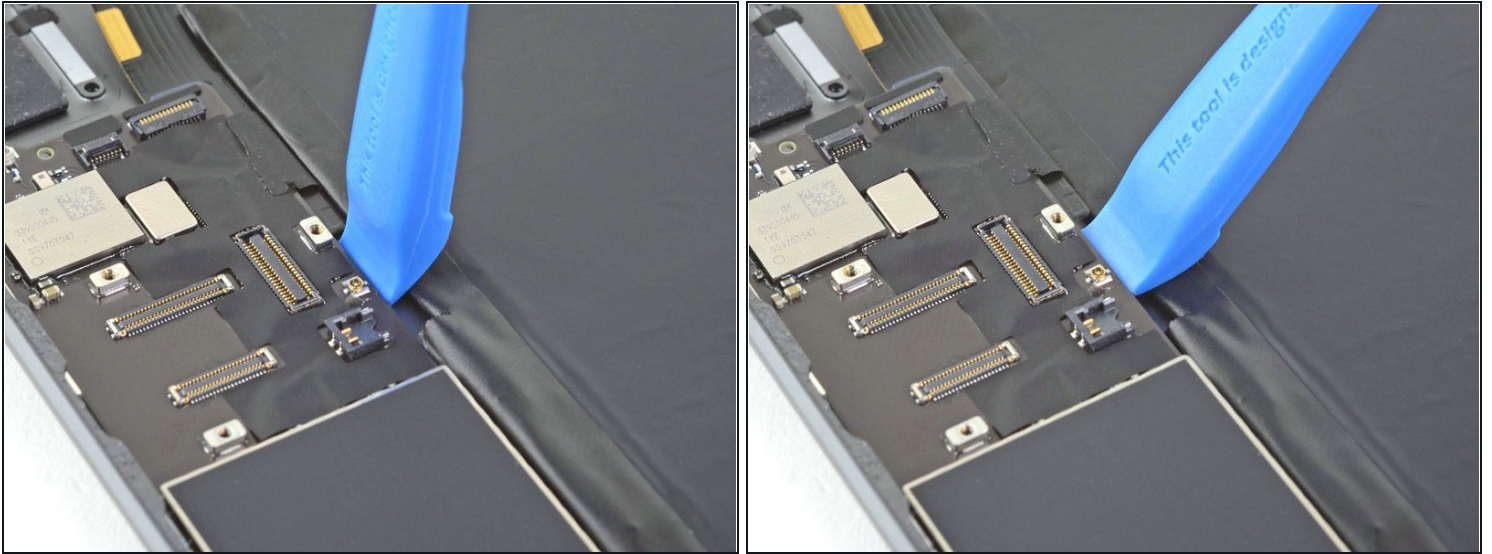
- Insert an opening pick under the upper arm of the logic board and slide it toward the logic board to cut the adhesive securing it to the rear case.
- Leave the opening pick inserted to keep the adhesive from re-adhering.

## Step 89



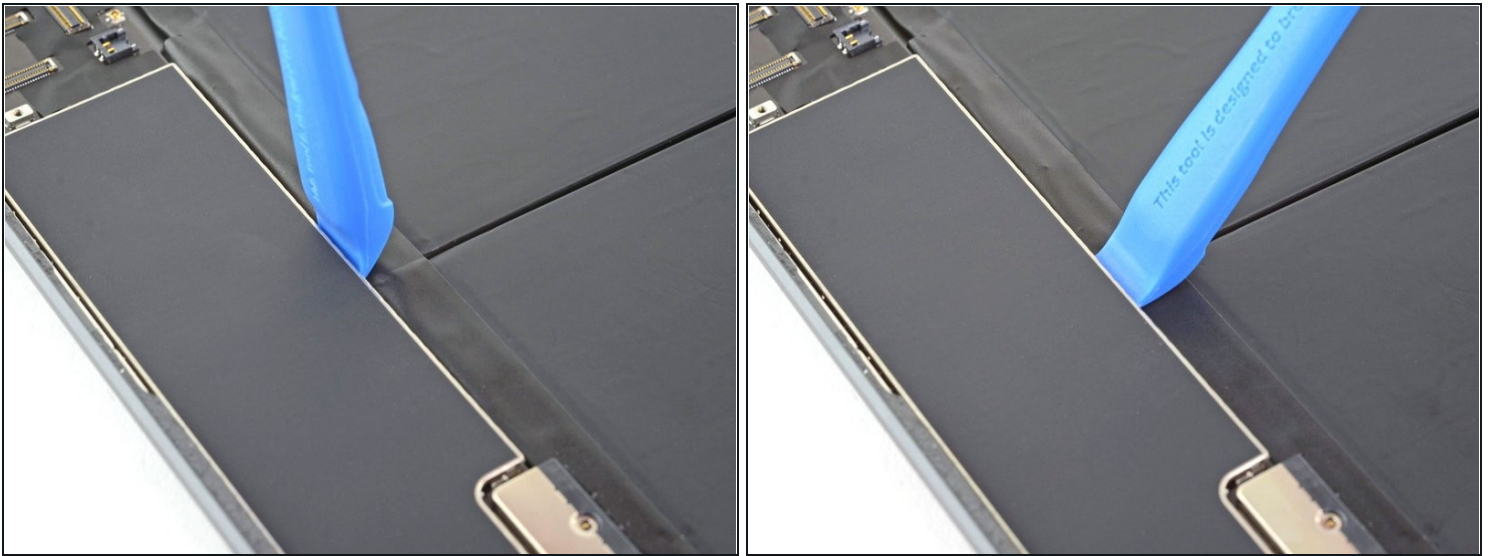
- Remove the battery blocker.

## Step 90



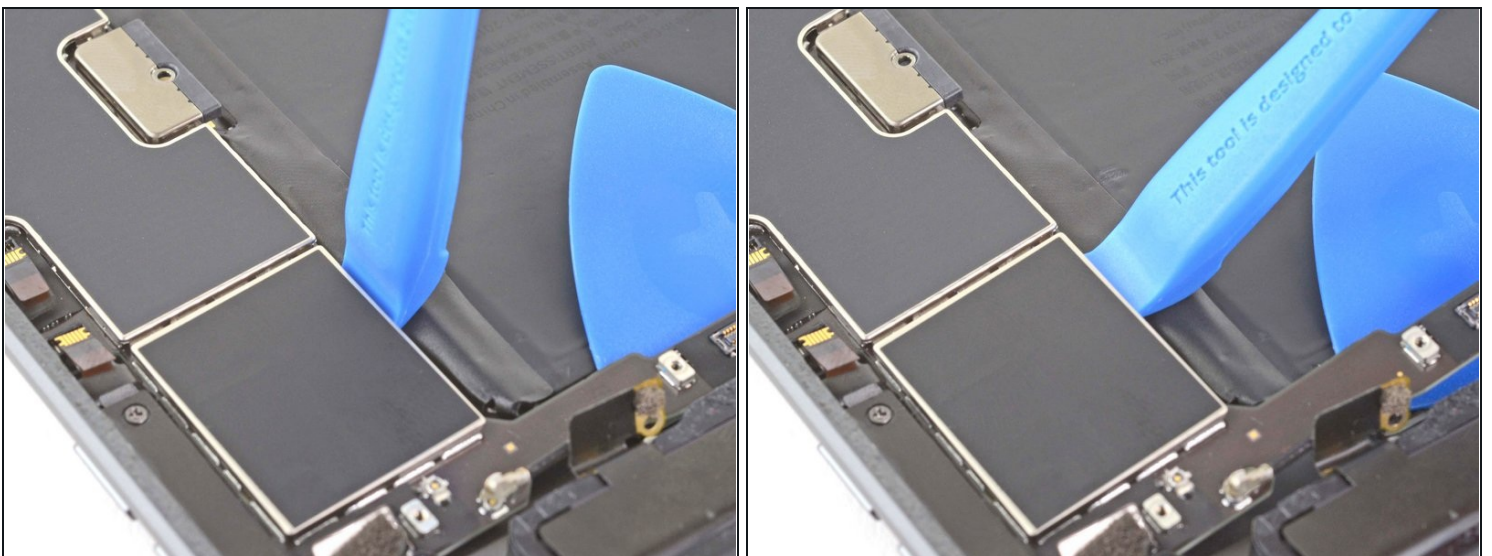
- Insert an opening tool near the bottom of the logic board and pry up with a slow and steady force to peel it away from the rear case.
  - ⚠ Bending or warping the logic board could lead to permanent damage. If the adhesive feels extra stubborn, apply more heat and try again.
- ① Slide an opening pick underneath the bottom edge of the logic board to slice some of the adhesive if your logic board won't budge.

## Step 91



- Insert an opening tool near the middle of the logic board and pry up with a slow and steady force to peel it away from the rear case.

## Step 92



- Insert an opening tool near the top of the logic board and pry up with a slow and steady force to peel it away from the rear case.



## Step 93



- Insert an opening tool near the middle of the logic board and pry up until you can grip it with your fingers.

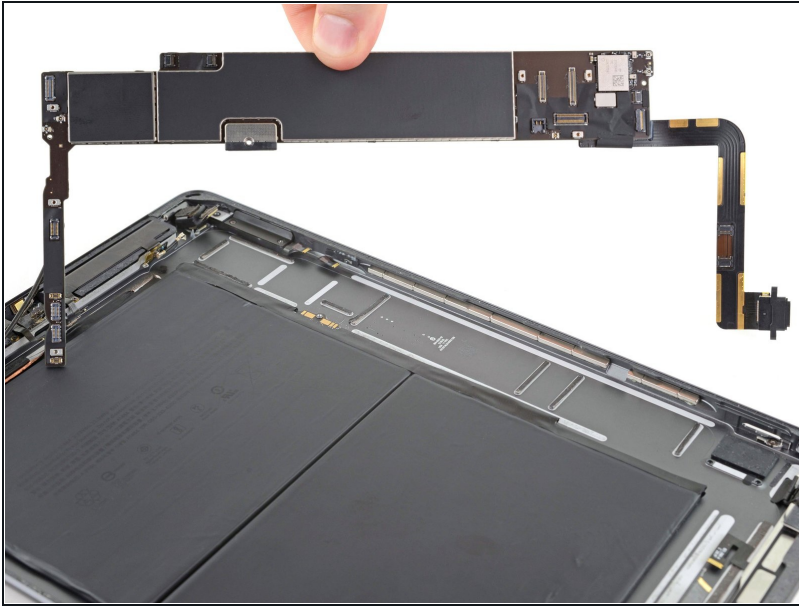
## Step 94



- Use a halberd spudger or an opening pick to slice any remaining adhesive securing the logic board to the rear case.



## Step 95



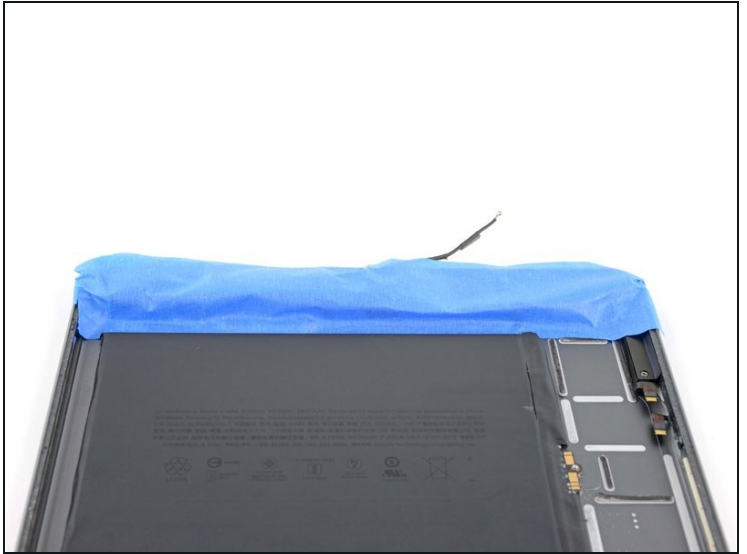
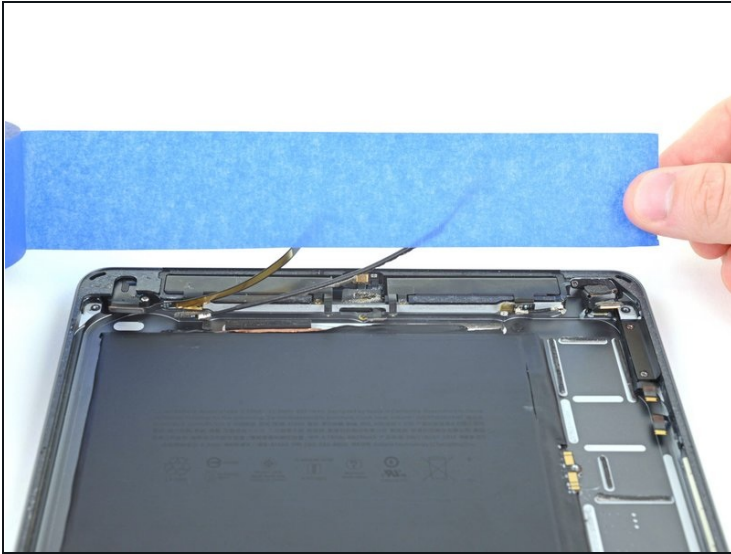
- Remove the logic board.
- ✦ During reassembly, ensure that there are no ribbon cables stuck under the logic board before gluing it down.
- ✦ During reassembly, apply strips of [Tesa tape](#) if the original adhesive is too mangled to be reused.

## Step 96 — Protect the other components



- ① Before removing the battery, it's important to protect the other components in the rear case by covering them with tape.
- Cut a strip of painter's tape or scotch tape to the width of the iPad.
- Press the bottom edge of the tape strip onto the rear case above the speakers and bottom antennas.
- ① Run your finger along the bottom edge of tape strip to ensure a good seal.
- Press the top edge of the tape strip over the bottom components to keep any cables from intruding on the battery removal.

## Step 97



- Cover the upper components with a strip of tape.

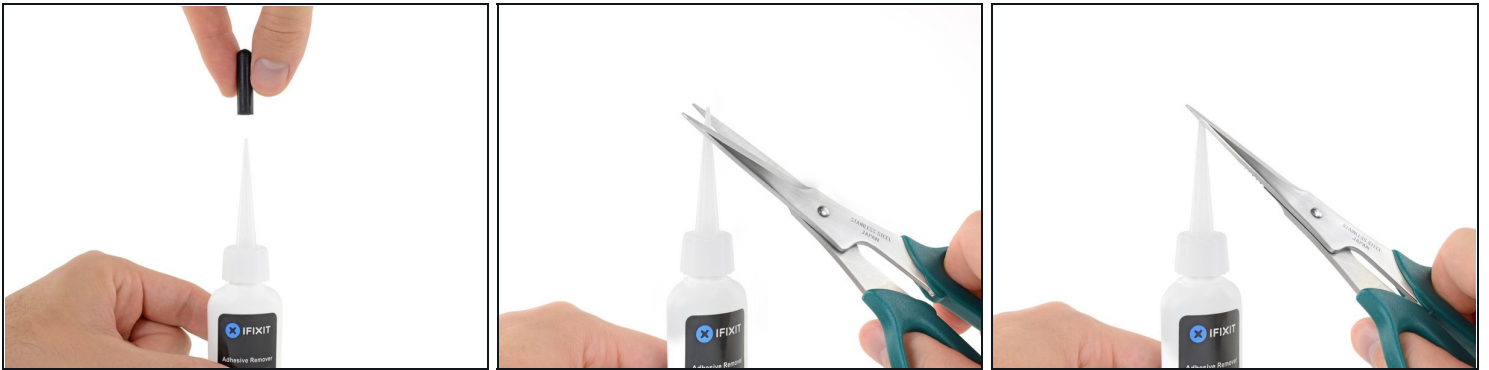
## Step 98 — Protect your eyes and skin



⚠ iFixit adhesive remover contains acetone, a mild skin and eye irritant.

- Wear eye protection when handling and applying the adhesive remover.
- **Do not** wear contact lenses without eye protection.
- Protective gloves are included in your kit. If you are concerned about possible skin irritation, put your gloves on now.

## Step 99 — Open the adhesive remover



- Pull off the black rubber stopper from your bottle of adhesive remover.

⚠️ **Twist to loosen or remove the bottle cap before you cut the applicator tip.**

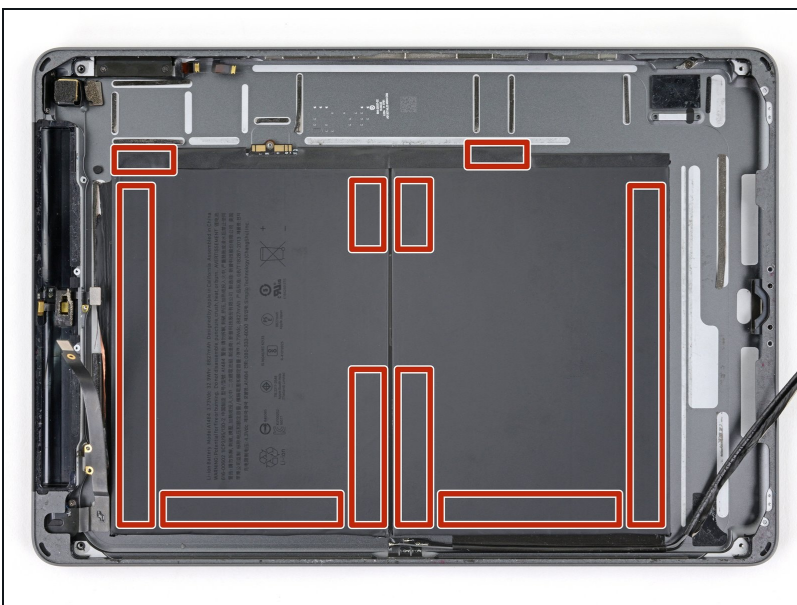
- ⓘ This unseals the bottle and allows the pressure to equalize before you cut the applicator tip. **If you skip this step, the adhesive remover may spray out unexpectedly when the tip is cut.**

- Use scissors to cut off the sealed tip of the applicator.

- ⓘ Cutting close to the narrow tip will give you better control so you can apply the adhesive remover in small amounts.

⚠️ **Twist and close the bottle cap securely before you proceed further.**

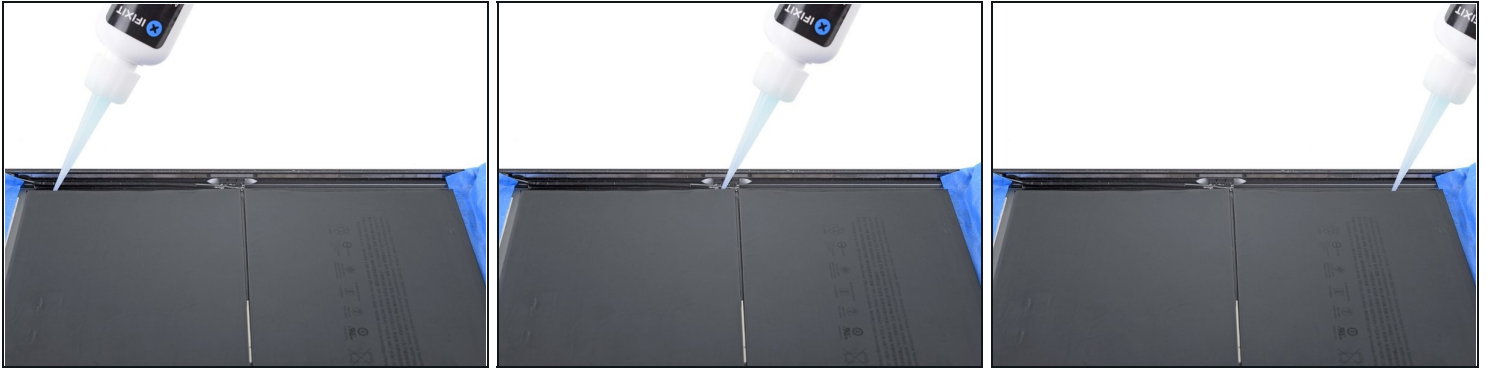
## Step 100 — Adhesive location



- The red boxes show the locations of the adhesive strips that secure the battery to the rear case.

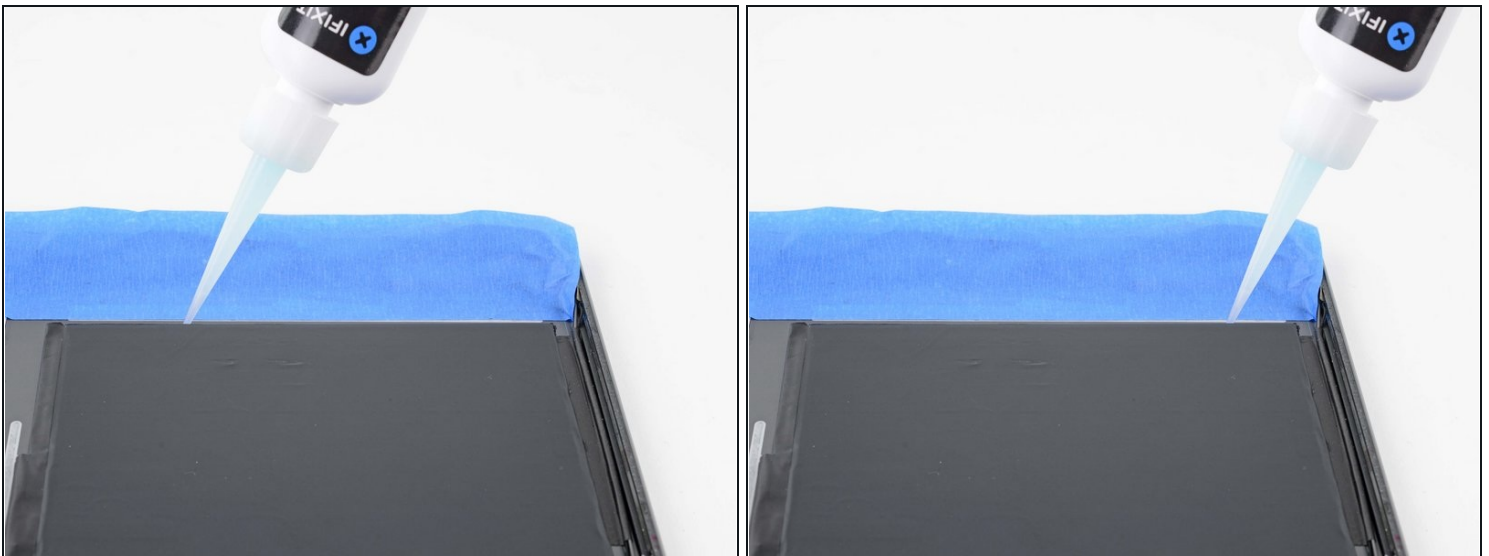


## Step 101 — Apply adhesive remover



- Apply a few drops of adhesive remover or high-concentration isopropyl alcohol along the left edge of the battery.

## Step 102



- Apply a few drops of adhesive remover or high-concentration isopropyl alcohol along the bottom edge of the battery.

### Step 103



- Apply a few drops of adhesive remover or high-concentration isopropyl alcohol between the two battery cells.

### Step 104



- Apply a few drops of adhesive remover or high-concentration isopropyl alcohol along the right edge of the battery.

## Step 105



- Apply a few drops of adhesive remover or high-concentration isopropyl alcohol along the upper edge of the battery.

## Step 106 — Cut the adhesive on the right edge



- Insert a [plastic card](#) at the bottom right corner of the battery.
  - ⚠ Take care not to puncture or bend the battery with your tool—a punctured or bent battery may leak dangerous chemicals or cause a thermal event.
- ⓘ If at any point in this process the adhesive becomes very difficult to cut through, apply an iOpener to that area.

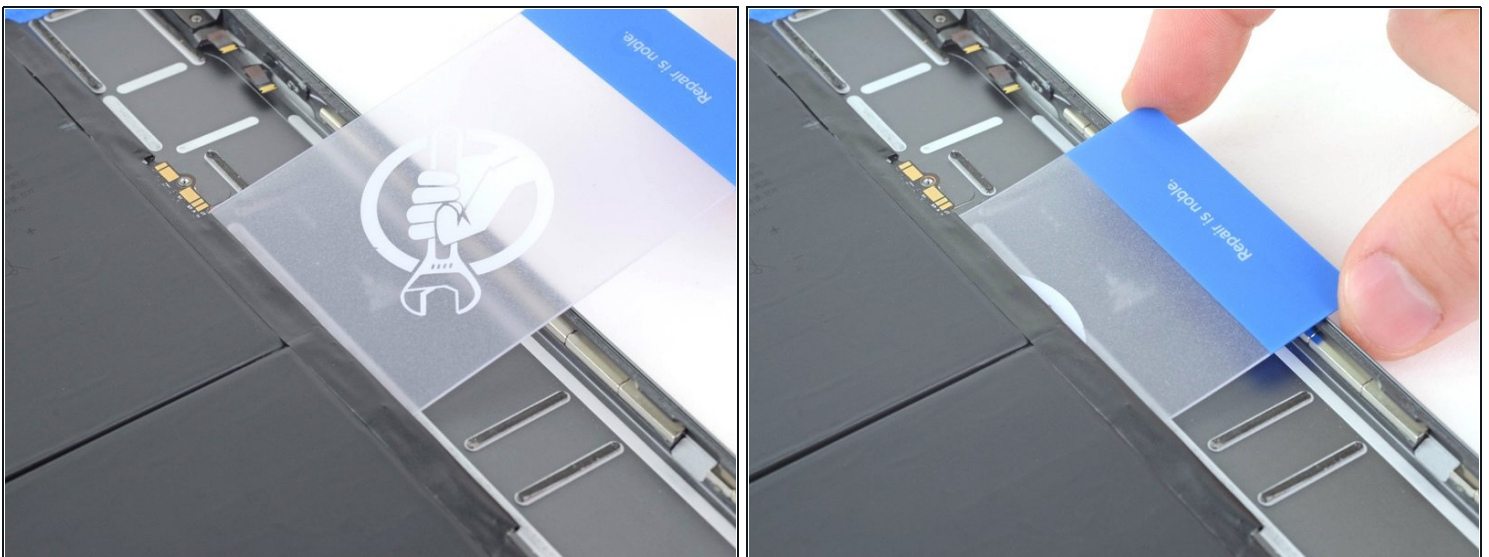


## Step 107



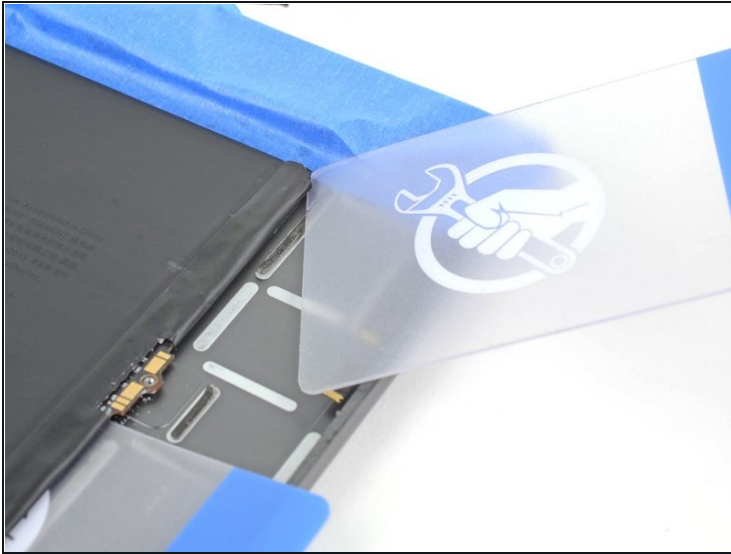
- Slide the plastic card underneath the right edge to reach the center.
- Insert the plastic card as far as you can under the battery to cut the adhesive.
- Remove the plastic card.

## Step 108



- Insert the plastic card below the battery connector as far as you can.
- Leave the plastic card inserted.

## Step 109



- Insert another plastic card above the battery connector as far as you can.

## Step 110 — Cut the adhesive on the bottom edge



- Remove the plastic card below the battery connector and insert it under the bottom edge of the battery.

## Step 111



- Slide the plastic card along the bottom edge of the battery to cut the adhesive strip.
- When you reach the left corner of the bottom edge, insert the plastic card as far as you can.

## Step 112 — Cut the adhesive on the upper edge



- Remove the plastic card above the battery connector and insert it under the upper edge of the battery.
  - Slide the plastic card along the top edge of the battery to cut the adhesive strip.
- ⓘ If you're having trouble loosening the battery, apply some more adhesive remover, or apply a heated iOpener to the back case.



## Step 113



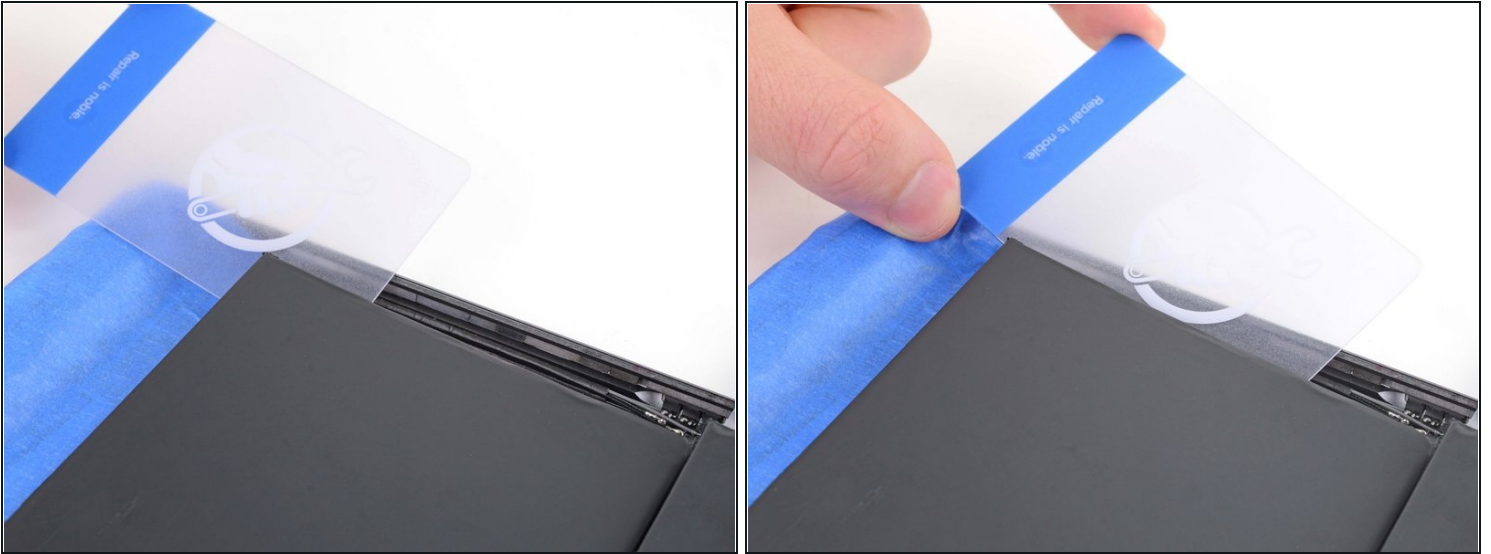
- When you reach the left corner of the upper edge, insert the plastic card as far as you can.

## Step 114 — Cut the adhesive on the left edge



- Insert the plastic card under the upper left corner of the battery.
- Slide the plastic card down towards the bottom of the iPad.
- When you reach the center edge of the battery, insert the plastic card as far as you can to cut the central adhesive strip.

## Step 115



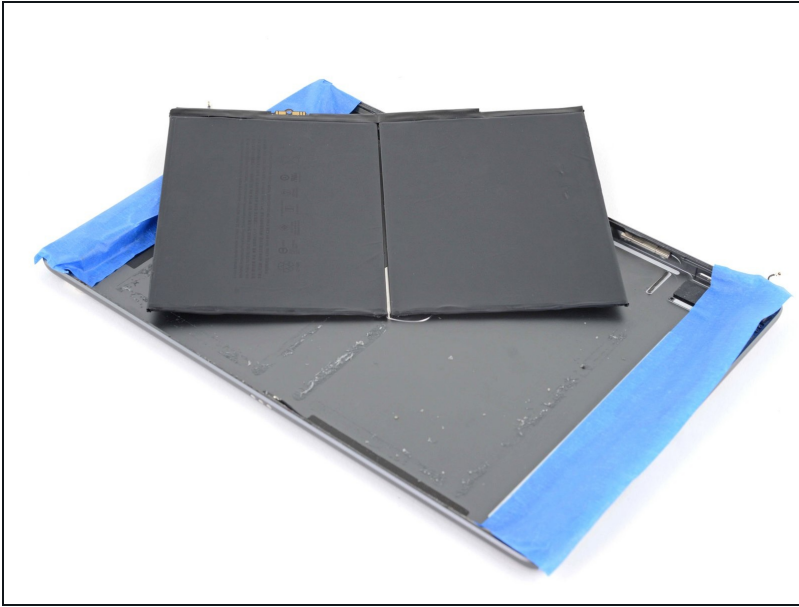
- Insert the plastic card under the bottom left corner of the battery.
- Slide the plastic card up towards the top of the iPad.

## Step 116



- When you reach the center edge, insert the plastic card as far as you can to cut the central adhesive strip.

## Step 117 — Remove the battery



- Remove the battery.
  - ❗ If you are still not able to remove the battery, repeat the process of cutting through the battery adhesive.
- ⚠ Do not reuse the battery after it has been removed, as doing so is a potential safety hazard. Replace it with a new battery.
- ★ Remove the old battery adhesive from the rear case using tweezers and high concentration isopropyl alcohol with a lint-free cloth where needed.
- ★ If your battery doesn't come with preinstalled adhesive, use [Tesa tape](#) to reattach the battery to the rear case.
- ★ Before installing the new battery, test it by first reinserting the logic board, connecting the button control cable ZIF connector, and the LCD press connector. Then remove the battery blocker and reinstall the battery connector screw. Power on the device to ensure it still works. Go backwards through this step and then glue down the battery.



---

To reassemble your device, follow these instructions in reverse order.

For optimal performance, [calibrate your newly installed battery](#) after completing this guide.

Take your e-waste to an [R2 or e-Stewards certified recycler](#).

Repair didn't go as planned? Try some [basic troubleshooting](#), or ask our [iPad 7 Answers community](#) for help.