



# Nintendo DSI Battery Replacement

This guide will instruct a user on how to...

Written By: Edrick Tong



# INTRODUCTION

This guide will instruct a user on how to access and replace a Nintendo DSI's batterypack.

## TOOLS:

[Phillips #0 Screwdriver](#) (1)

2.0mm

*A standard precision screwdriver set should do the trick if you can't find a #0 2.0mm*

[Spudger](#) (1)

## PARTS:

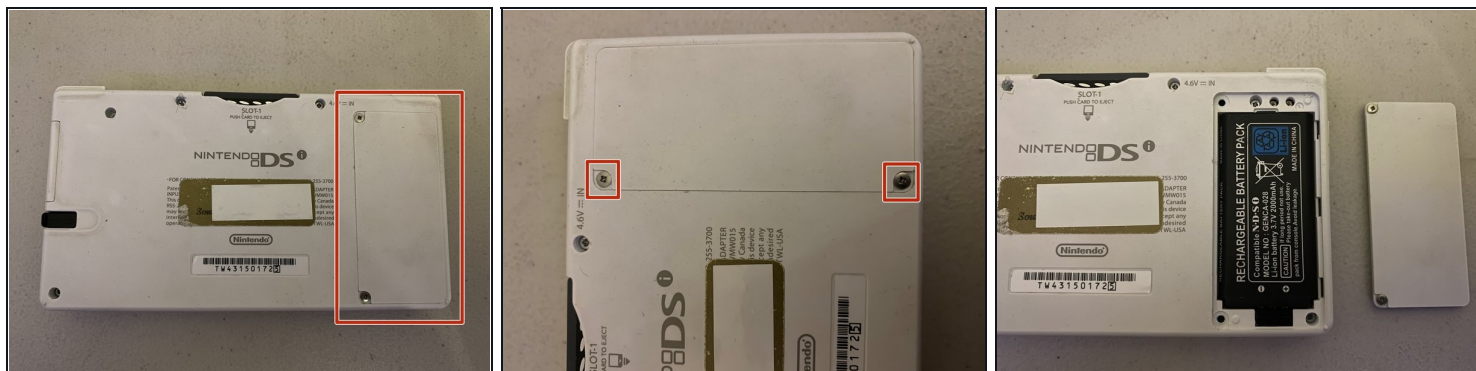
[Nintendo DSI Battery](#) (1)

## Step 1 — Setup and Parts



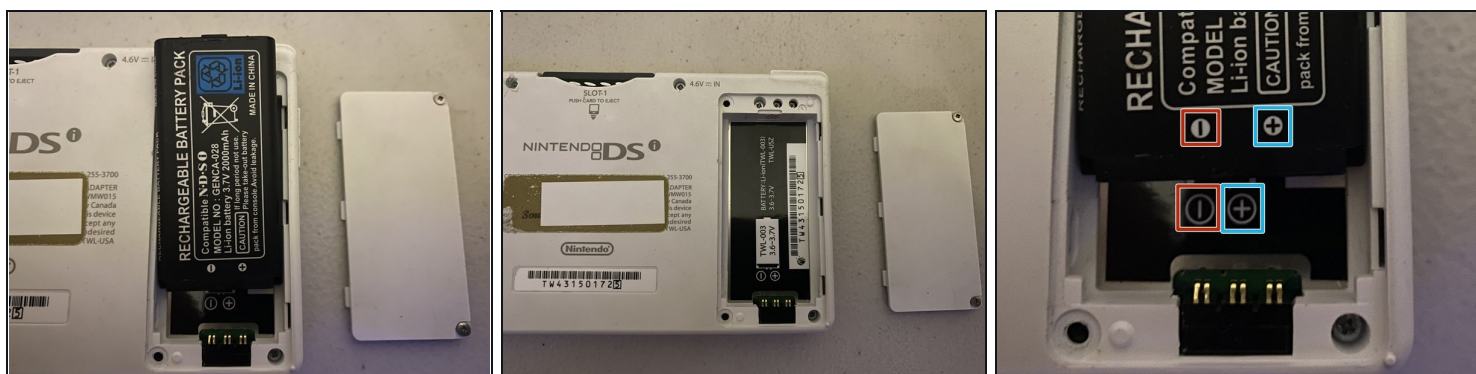
- To begin the battery replacement, have all your tools and parts nearby and ready to go.
- Nintendo DSI
- #00 2.0mm Phillips Head Screwdriver **OR** Precision Screwdriver Kit
- Spudger or Prying Tool
- Nintendo DSI Battery

## Step 2 — Accessing the battery compartment



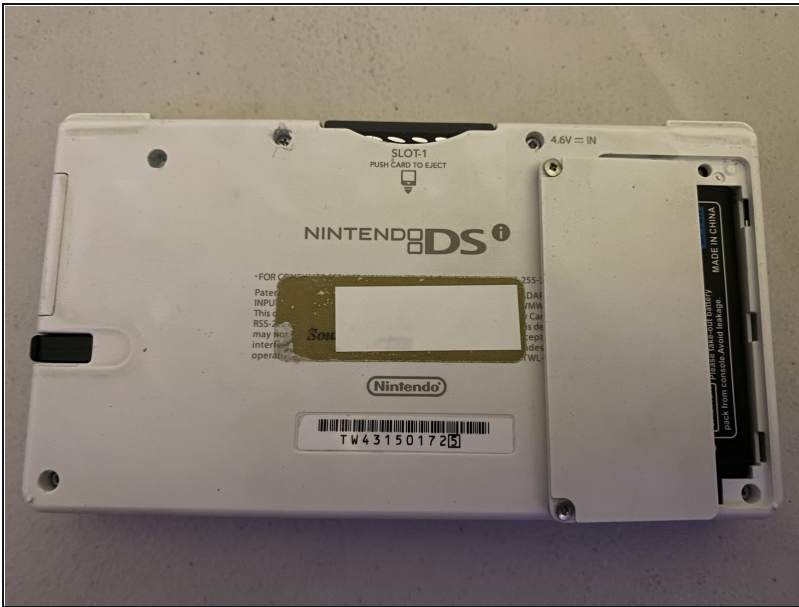
- On the backside of the DSi, you'll notice a plastic panel with two screws off to the side. Unscrew both screws using a #00 Phillips head screwdriver or an appropriately sized screwdriver bit.
- Unscrew both screws using a #00 Phillips head screwdriver or an appropriately sized screwdriver bit. The screws will stay with the panel during removal.
- Lift the plastic panel up and away from the DSi. If the panel stays in place after unscrewing, hold the DSi upside down and gently tap the device. This should free the panel.

## Step 3 — Removing and Replacing the battery pack



- Once you've removed the plastic panel, you'll have full access to the battery pack.
- Using the spudger/prytool or gently tapping the DSi, lift and remove the battery upwards and away from the device.
- **[IMPORTANT]** when installing the replacement battery pack, make sure to line up the positive and negative terminals on the battery to those on the battery compartment on the DSi

## Step 4 — Finishing up



- Once you've reinstalled/replaced the battery pack. Reinstall the plastic panel, making sure to line up the plastic hinges on the side adjacent to the screws.
- Drop the panel into place and retighten both of the screws.

---

Congratulations! You just replaced your Nintendo DSi's battery!