



Samsung NP540U3C-A02UB Fan Replacement

How to replace the fan for the Samsung Series 5 NP540U3C-A02UB.

Written By: Colby Bolger



INTRODUCTION

This guide covers how to replace the fan for the Samsung Series 5 NP540U3C-A02UB.

The fan provides cooling for the internal components of the laptop. After long periods of use or intensive use of the laptop, the internal components heat up. This is mitigated by removing heat from the inside of the laptop using a fan, as components may become damaged when overheated. If you believe your laptop is experiencing overheating, see our [troubleshooting guide](#) for possible causes before attempting to replace the fan.

Before replacing the fan, inspect the fan for dust and debris that may be affecting the fan's ability to cool the laptop. Debris can be removed from the fan using a soft cloth or cotton swabs and dust can be removed using a compressed air duster. Make sure the vents of the laptop are also clear of dust and debris to eliminate any possibilities short of a failing fan.



TOOLS:

- [Phillips #00 Screwdriver](#) (1)
- [iFixit Opening Tool](#) (1)



PARTS:

- [DBTLAP Laptop CPU Fan](#) (1)

Step 1 — Fan



- ❗ Turn off the laptop and disconnect from the charging cable before beginning disassembly.
- Place the laptop flat with its bottom facing up.

Step 2



- Remove the 1x 4mm Phillips #00 screw labeled "HDD Memory".

Step 3



- Gently release the three clips holding the HDD cover with the plastic opening tool.
- Remove the HDD cover from the device.

Step 4



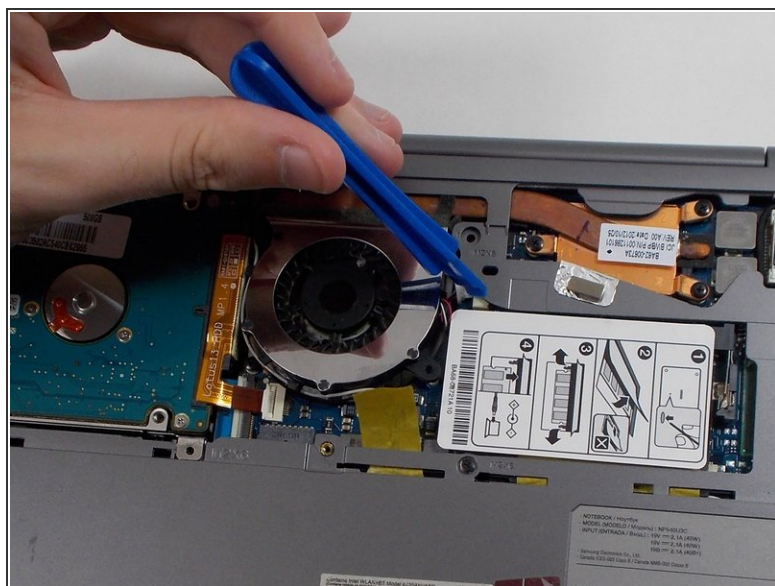
- Peel the yellow tape up so it no longer blocks the fan's wires and screw.

Step 5



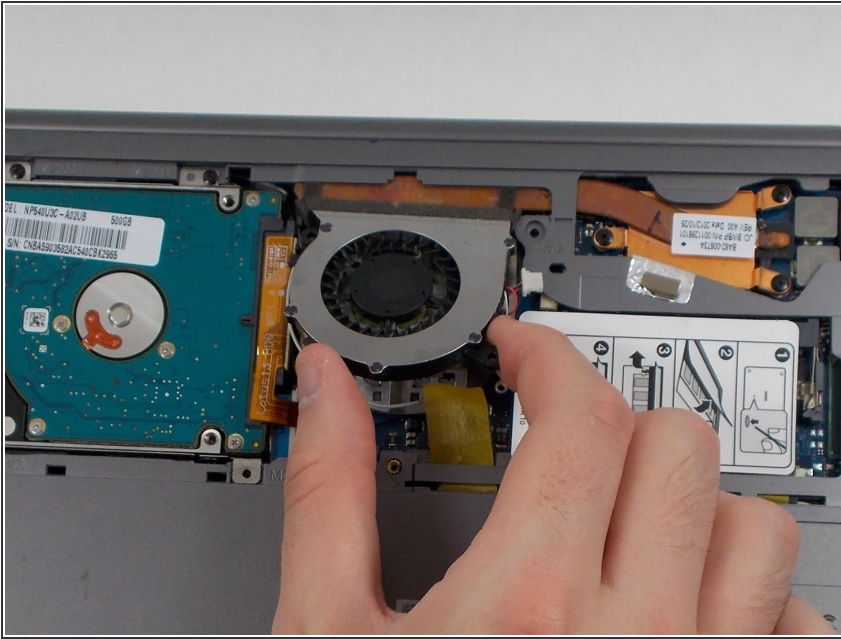
- Remove the two 2.4mm Phillips #00 screws attaching the fan to the case.
- Remove the two 6mm Phillips #00 screws attaching the fan to the case.

Step 6



- Using the plastic opening tool, gently disconnect the fan from the motherboard by unplugging the wire.

Step 7



- Remove the fan from the case.

To reassemble your device, follow these instructions in reverse order.