



# Samsung NP540U3C-A02UB Battery Replacement

This guide covers how to replace the battery...

Written By: Alejandro



## INTRODUCTION

This guide covers how to replace the battery for the Samsung Series 5 NP540U3C-A02UB.

The battery provides constant power to the device. This gives the laptop its portability and makes it possible to use the device without being plugged into a wall outlet for long periods of time. The battery may need to be replaced if the device appears to be overheating or has a short battery life. If the device exhibits these symptoms, see our [troubleshooting guide](#) for possible causes before attempting to replace the battery.

The Samsung Series 5 NP540U3C-A02UB uses a 7.4 V rechargeable Lithium Polymer battery. Ensure that such a battery is chosen before attempting a replacement. A compatible battery is provided below.



### TOOLS:

- [iFixit Opening Tool](#) (1)
- [Phillips #00 Screwdriver](#) (1)



### PARTS:

- [2.5" SATA Hard Drive](#) (1)
- [Samsung AAPLWN4AB and AAPBYN4AB Replacement Laptop Battery](#) (1)

## Step 1 — Hard Drive



- ① Turn off the laptop before beginning disassembly and unplug it from the power cord.
- Place the laptop flat with its bottom facing up.

## Step 2



- Remove one 4 mm Phillips #00 screw labeled "HDD Memory".

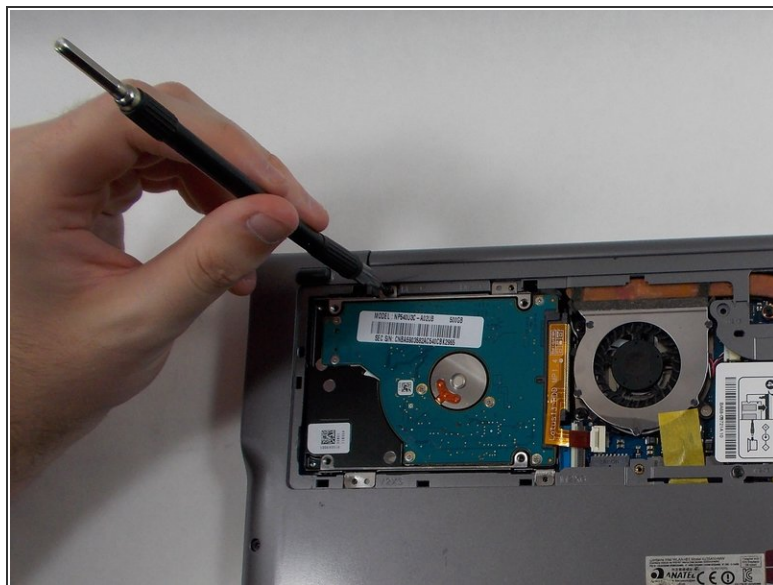
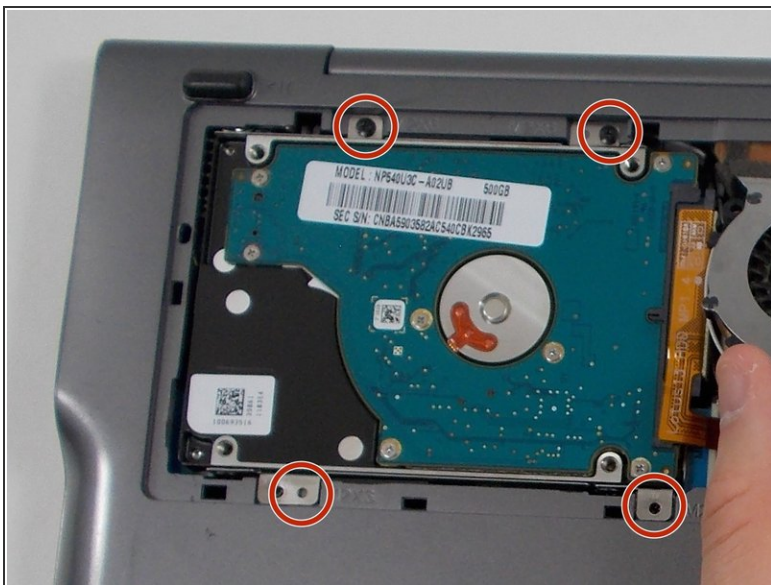


## Step 3



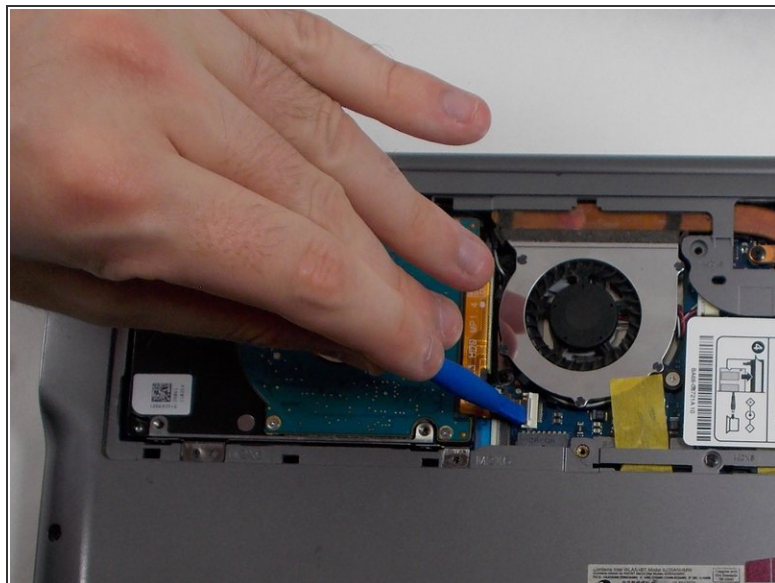
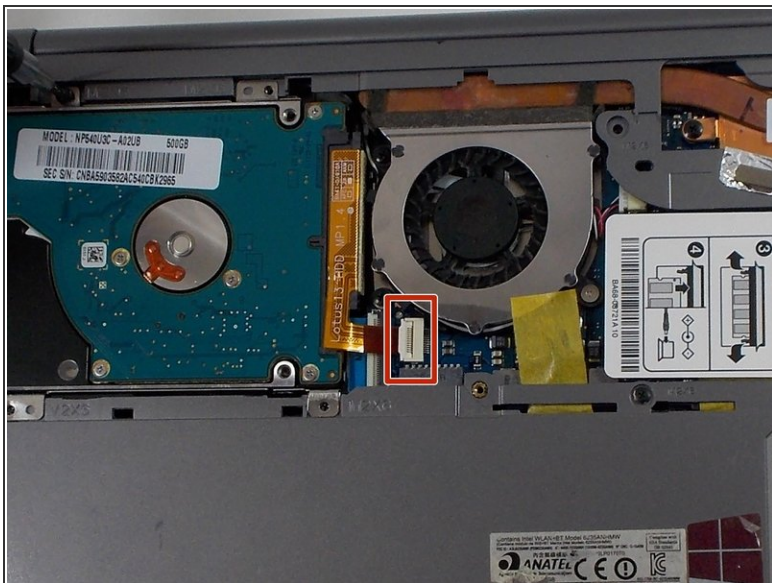
- Gently release the 3 clips holding the HDD cover with the plastic opening tool.
- Remove the HDD cover from the device.

## Step 4



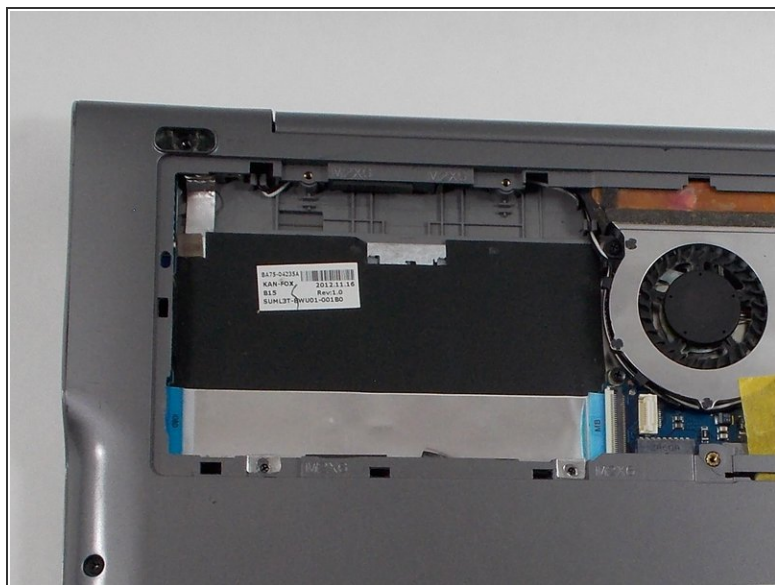
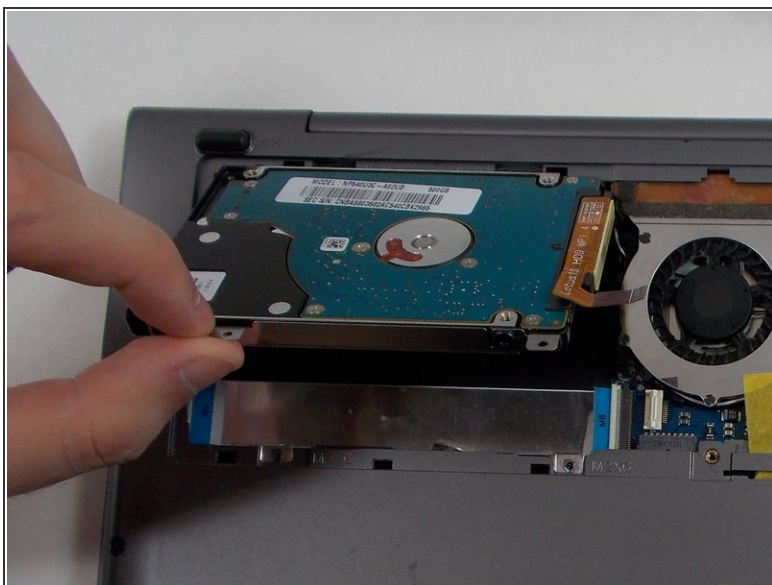
- Remove the four 6 mm Phillips #00 screws attaching the hard drive to the case.

## Step 5



- Using the plastic opening tool, push the hard drive connector clip upwards in order to release the cable.

## Step 6



- Remove the hard drive from the case.

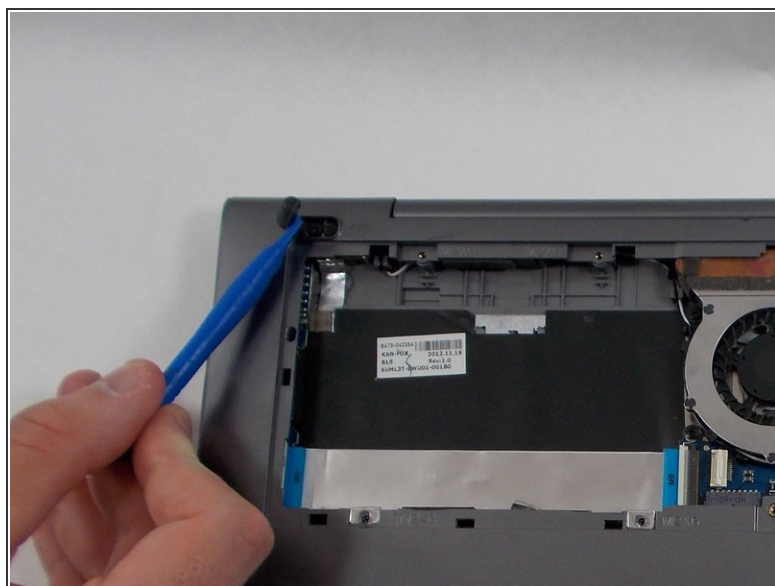
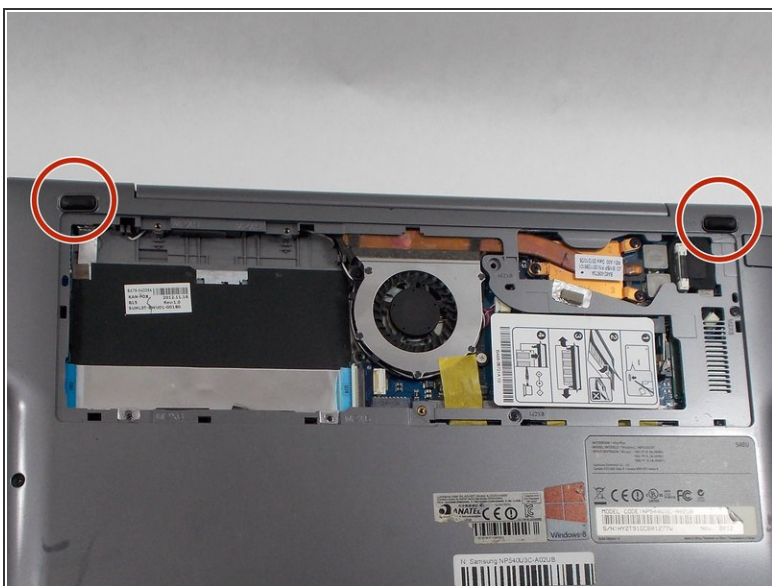


## Step 7 — Battery



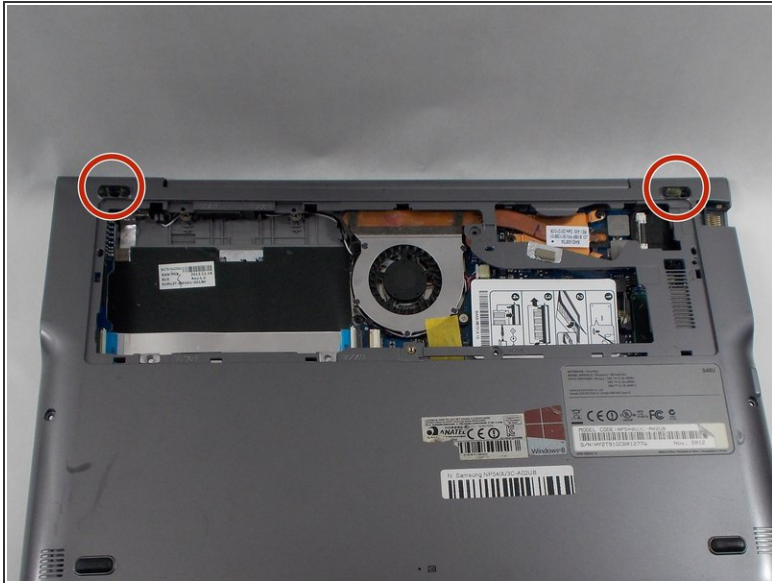
- Remove the following screws holding the case together:
  - 6x 4mm Phillips #00 screws.
  - 3x 6mm Phillips #00 screws.

## Step 8



- Using the opening tool, remove the two rubber pads just above the hard drive cover.

## Step 9



- Remove the 2x 4mm Phillips #00 screws formerly concealed by the pads.

## Step 10

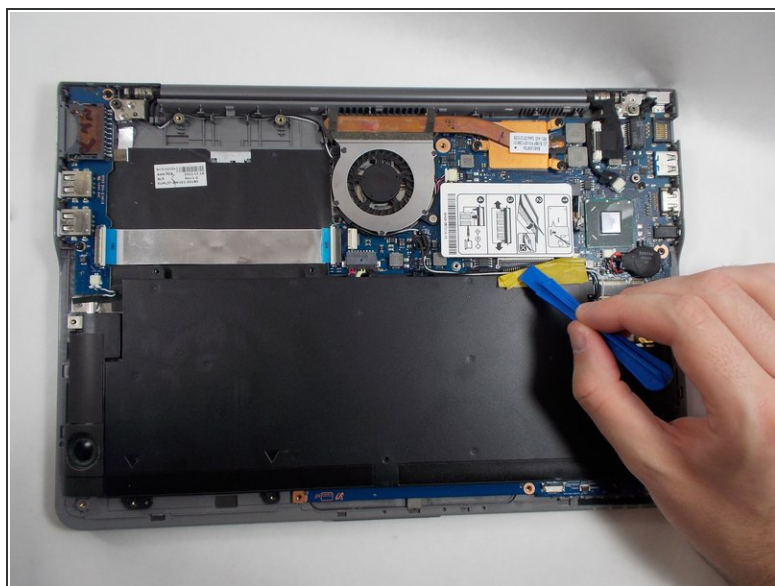
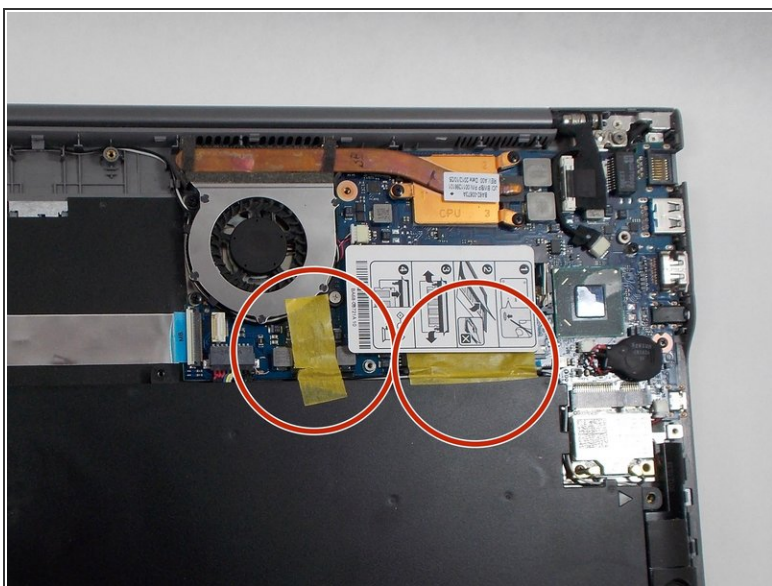


- Using the plastic opening tool, gently lift and remove the back cover.

**⚠** *There are clips along the edges of the back cover that hold it in place. Be careful not to break these.*

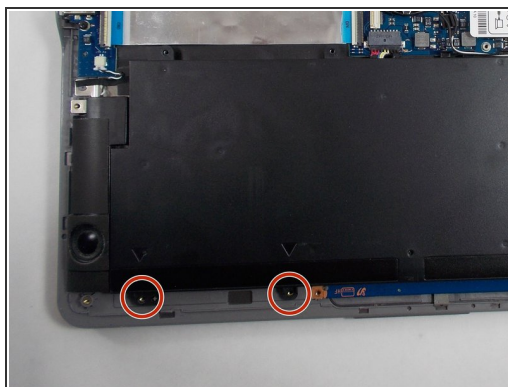
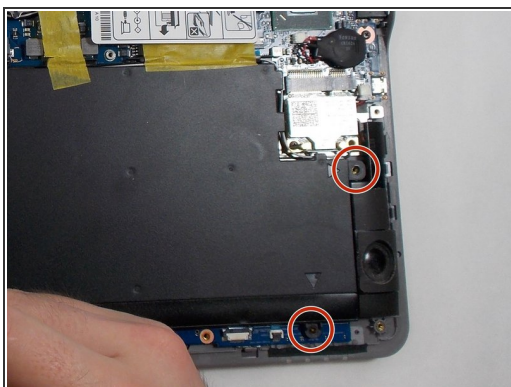


## Step 11



- Using your hands or the plastic opening tool, gently remove the tape holding the wires in place.

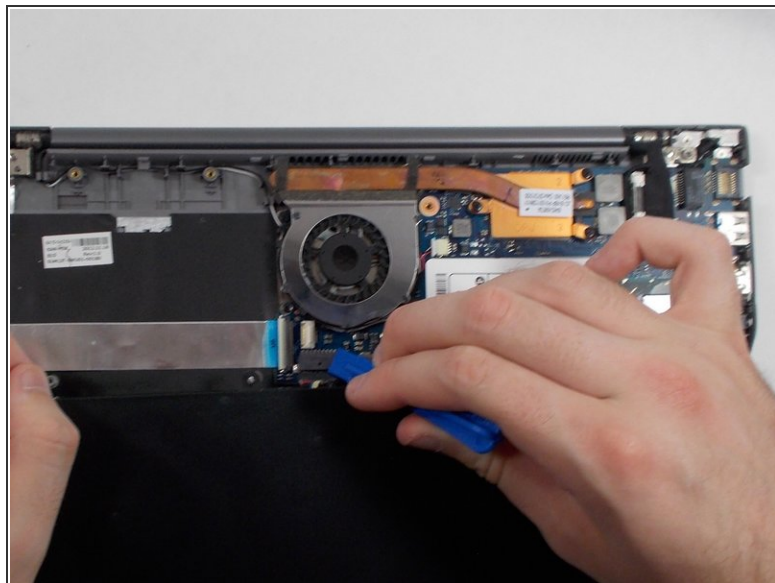
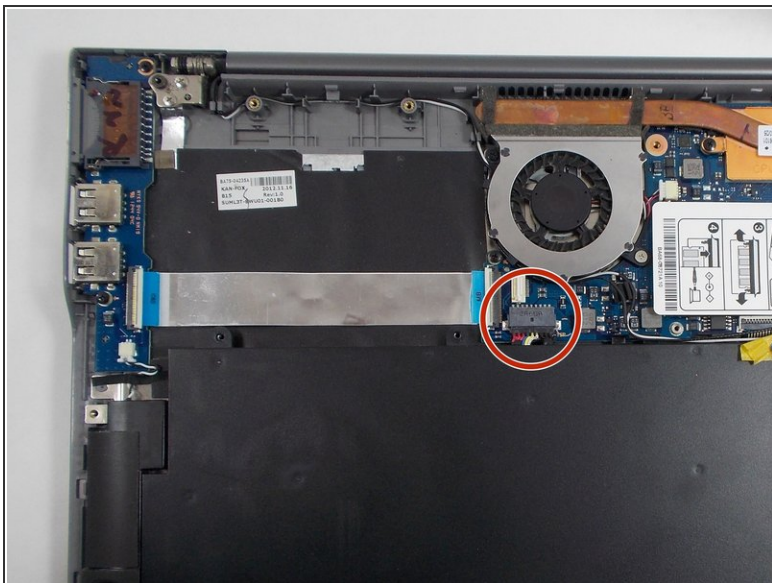
## Step 12



- Remove the 4x 4mm Phillips #00 screws securing the battery to the chassis.



## Step 13



- Using the plastic opening tool, gently pull the battery connector towards the battery to disconnect it.

## Step 14



- Remove the battery from the laptop.

To reassemble your device, follow these instructions in reverse order.

This document was generated on 2022-12-07 12:24:35 AM (MST).

