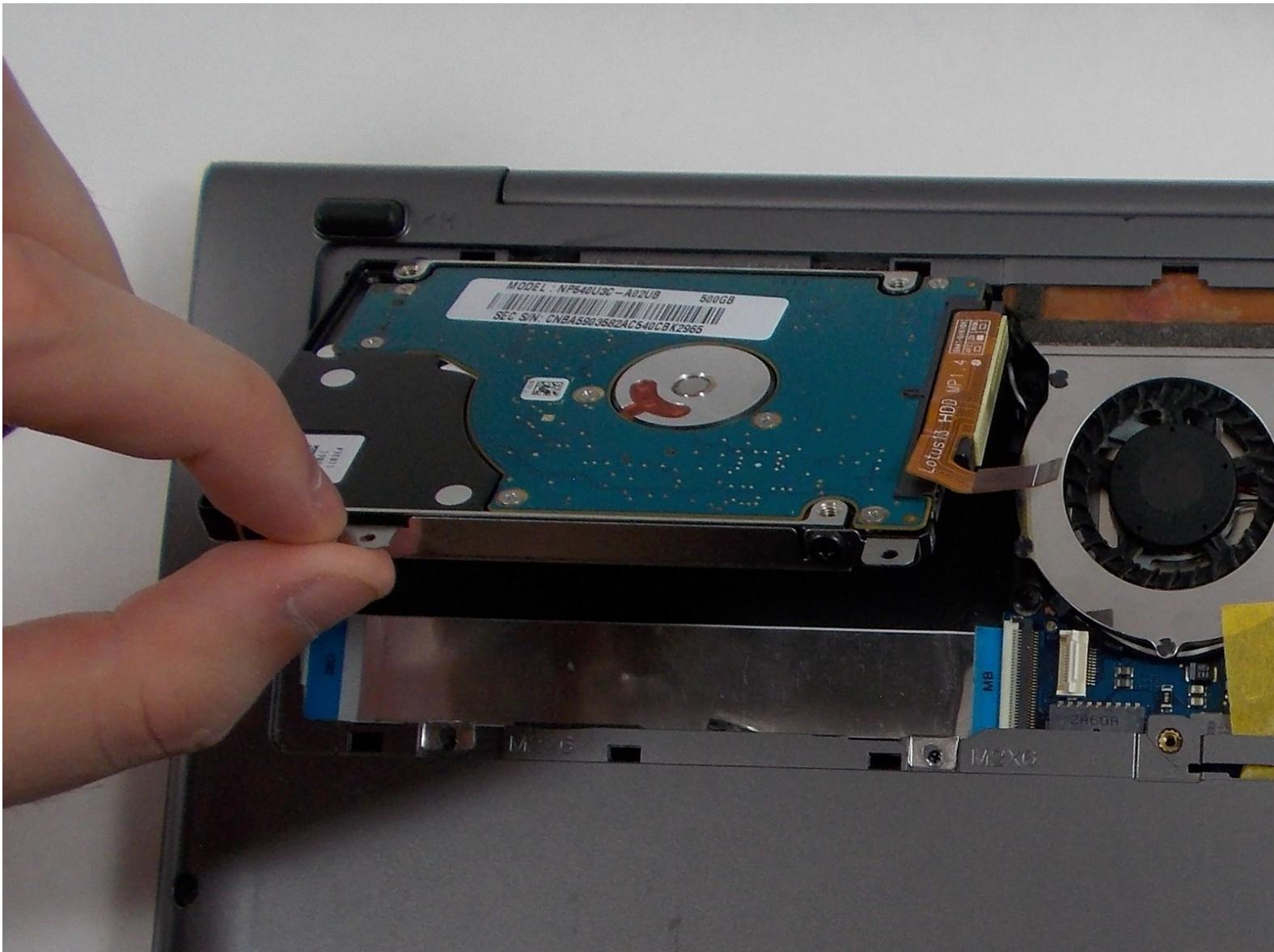




Samsung NP540U3C-A02UB Hard Drive Replacement

This guide covers how to replace the hard drive...

Written By: James Bourgeois



INTRODUCTION

This guide covers how to replace the hard drive for the Samsung Series 5 NP540U3C-A02UB.

The hard drive stores the device's data and ensures that is kept, even when power is disconnected. More importantly, the operating system is run from the hard drive. The hard drive may need to be replaced if either data or the operating system appears to be corrupted. If the device is running slowly, see our [troubleshooting guide](#) for possible causes and solutions before attempting to replace the hard drive.

If you choose to restore your previous operating system onto the replacement hard drive to resume normal operation, ensure that the replacement has enough storage to contain all of your old files. This device accepts 2.5" SATA hard drives (HDD), or 2.5" SATA solid-state drives (SSD). Solid-state drives will boot and operate much faster than hard drives.



TOOLS:

- [Phillips #00 Screwdriver](#) (1)
- [iFixit Opening Tool](#) (1)



PARTS:

- [1 TB SSD](#) (1)
- [Crucial MX500 250 GB SSD](#) (1)
- [Crucial MX500 500 GB SSD](#) (1)
- [Crucial MX500 2 TB SSD](#) (1)

Step 1 — Hard Drive



- ❗ Turn off the laptop before beginning disassembly and unplug it from the power cord.
- Place the laptop flat with its bottom facing up.

Step 2



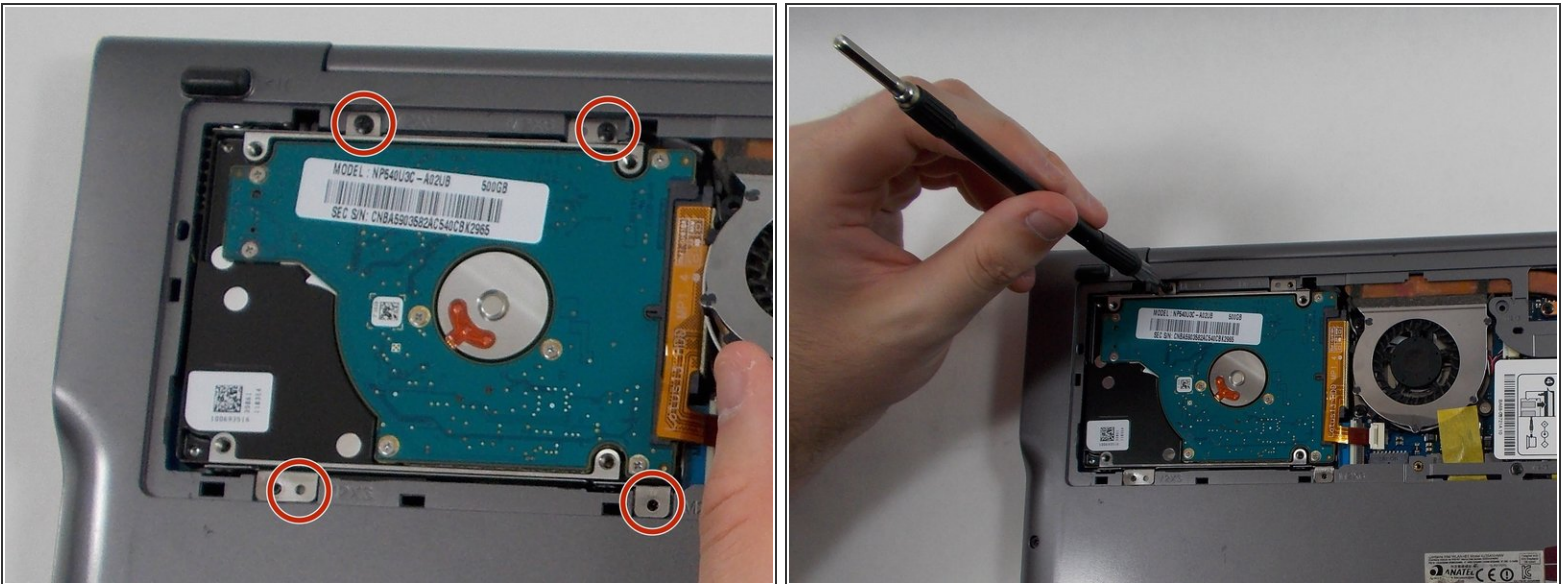
- Remove one 4 mm Phillips #00 screw labeled "HDD Memory".

Step 3



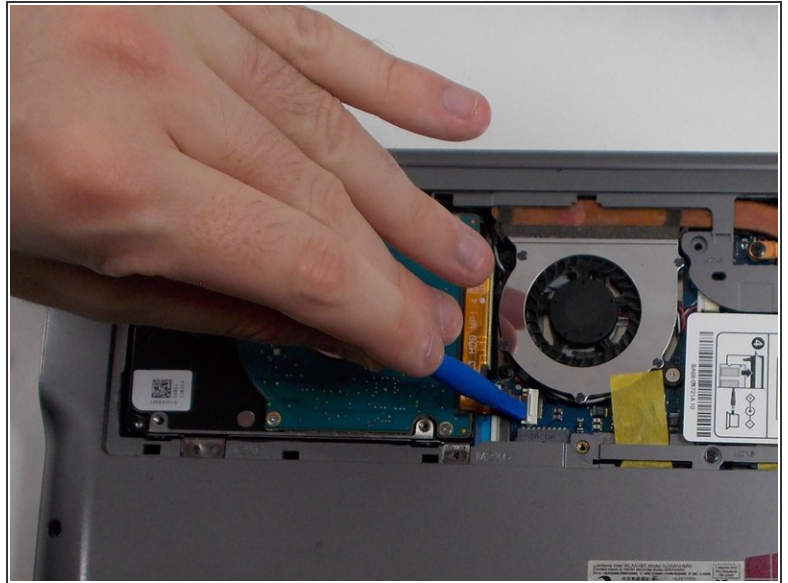
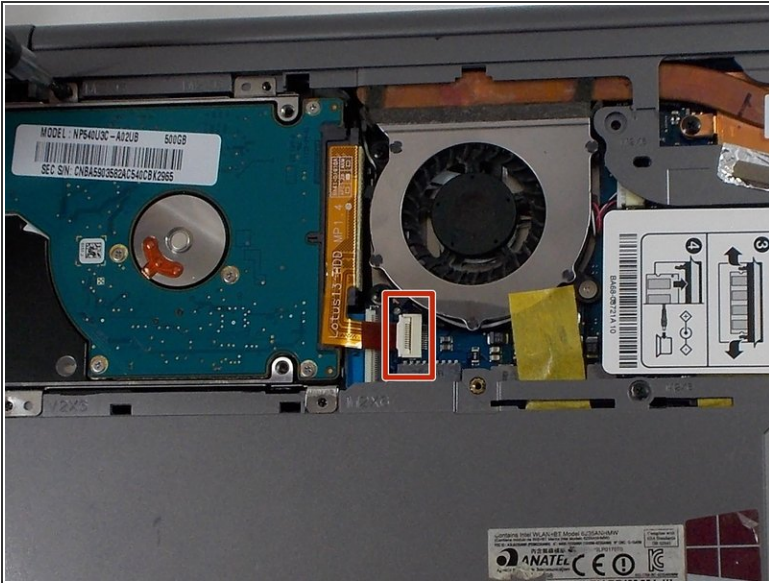
- Gently release the 3 clips holding the HDD cover with the plastic opening tool.
- Remove the HDD cover from the device.

Step 4



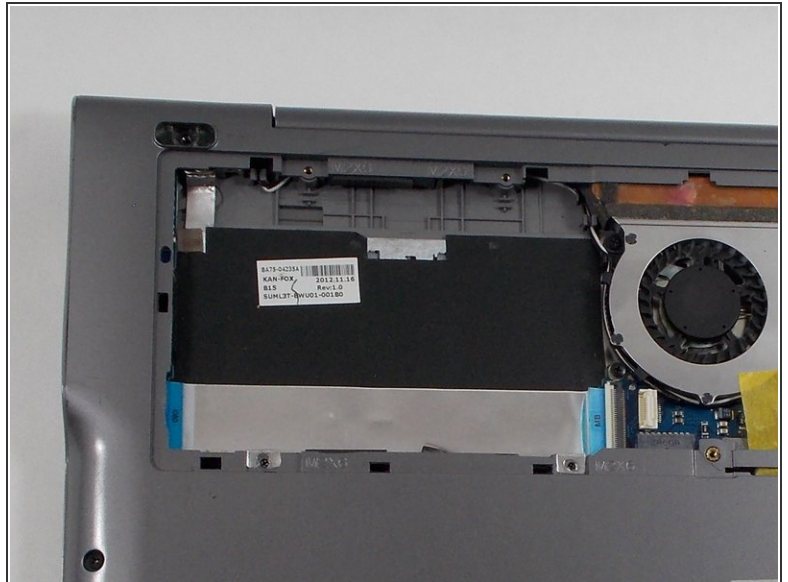
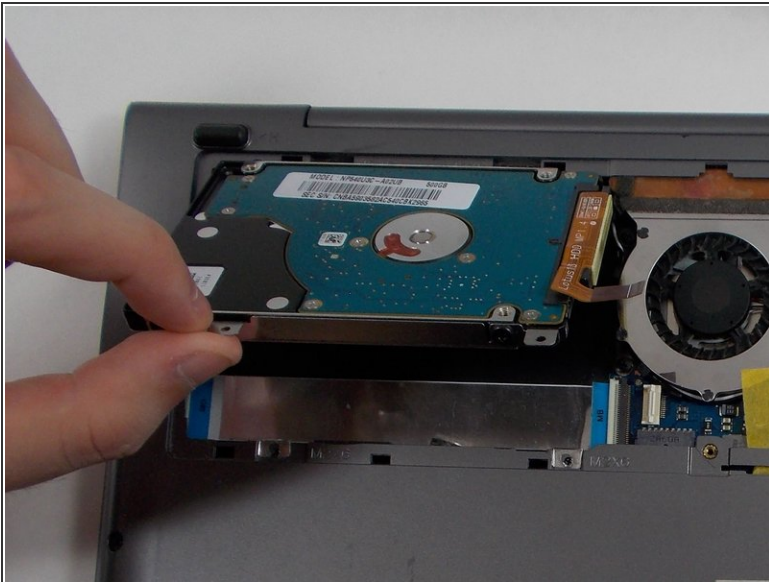
- Remove the four 6 mm Phillips #00 screws attaching the hard drive to the case.

Step 5



- Using the plastic opening tool, push the hard drive connector clip upwards in order to release the cable.

Step 6



- Remove the hard drive from the case.

To reassemble your device, follow these instructions in reverse order.