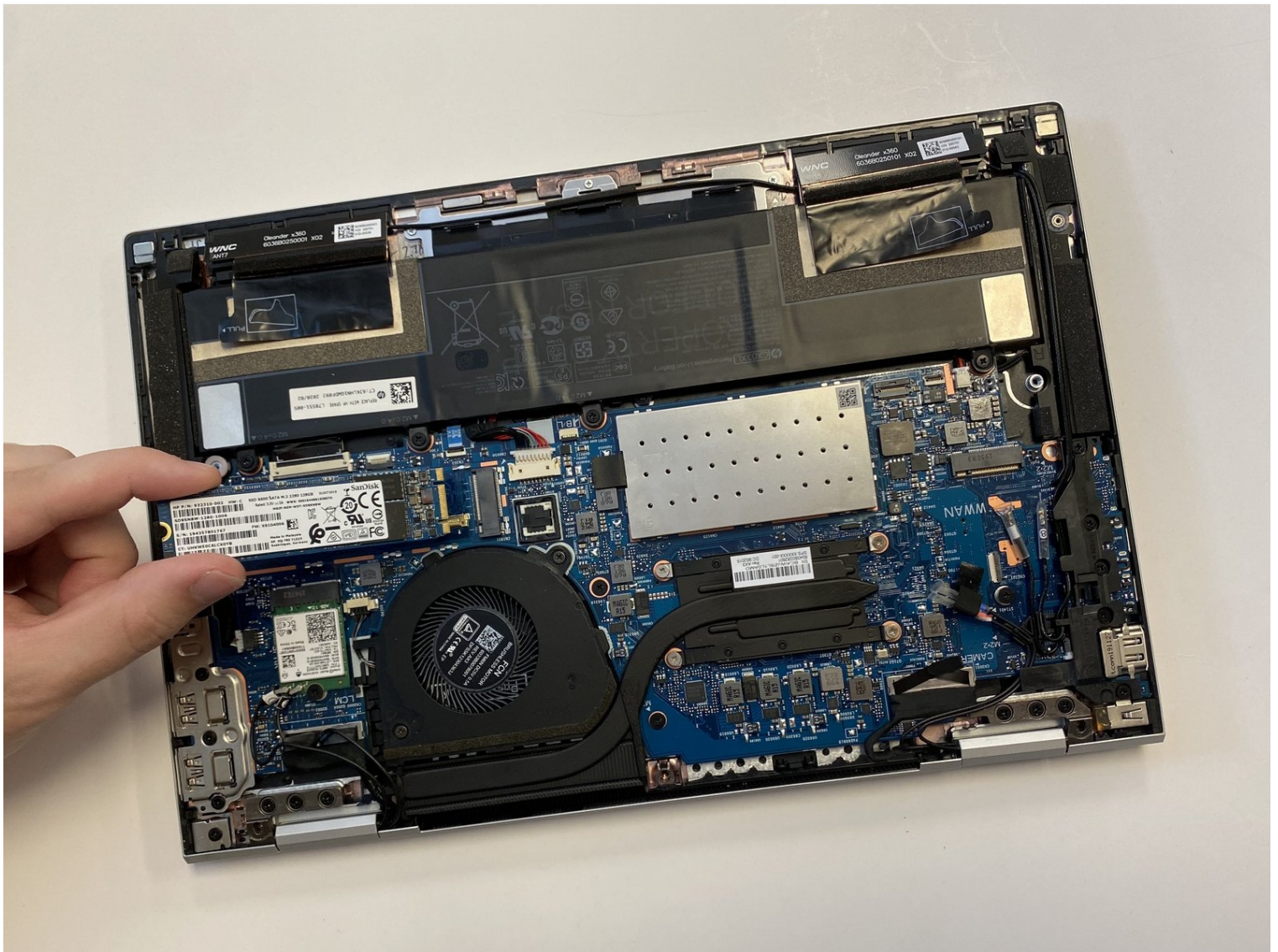




HP EliteBook x360 830 G7 Solid State Drive Replacement

This guide will help you replace the solid...

Written By: Emily Kaplan



INTRODUCTION

This guide will help you replace the solid state drive from your HP EliteBook x360 830 G7 laptop.

The SSD is a piece of hardware that stores the digital content and data on your computer. The signs of a failing disk drive include overheating, unusual noises, program crashes, and/or a blue screen error.

Before using this guide, be sure to check out the [troubleshooting page](#)- sometimes malware and viruses can be removed without replacing the SSD.

NOTE: Make sure to back up your SSD in order to ensure that you do not lose any data.

Power off and disconnect the laptop from any power source before starting.



TOOLS:

[Phillips #0 Screwdriver](#) (1)

[T5 Torx Screwdriver](#) (1)



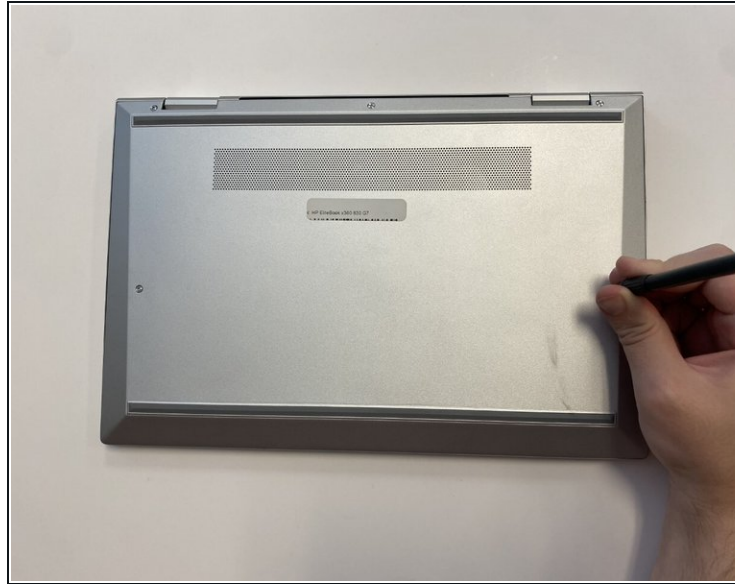
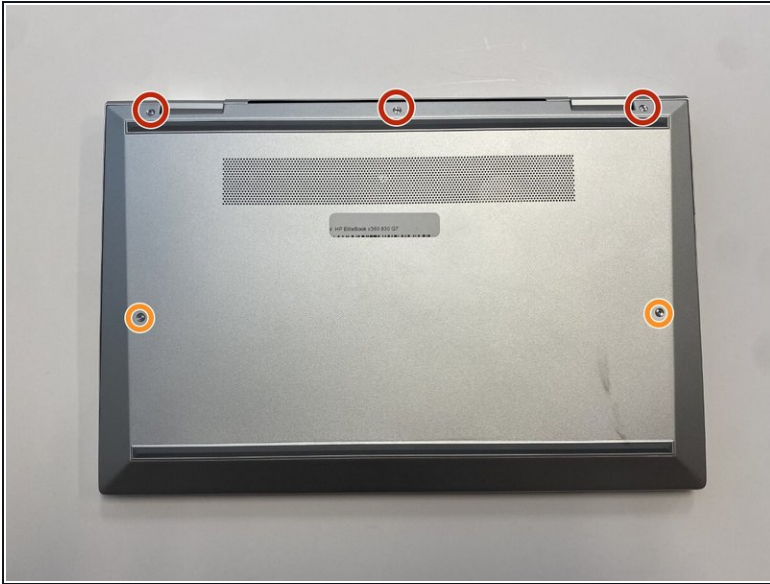
PARTS:

[Crucial P3 NVMe PCIe M.2 2280SS SSD](#)
(1)

[Crucial P3 Plus NVMe PCIe M.2 2280SS SSD](#) (1)

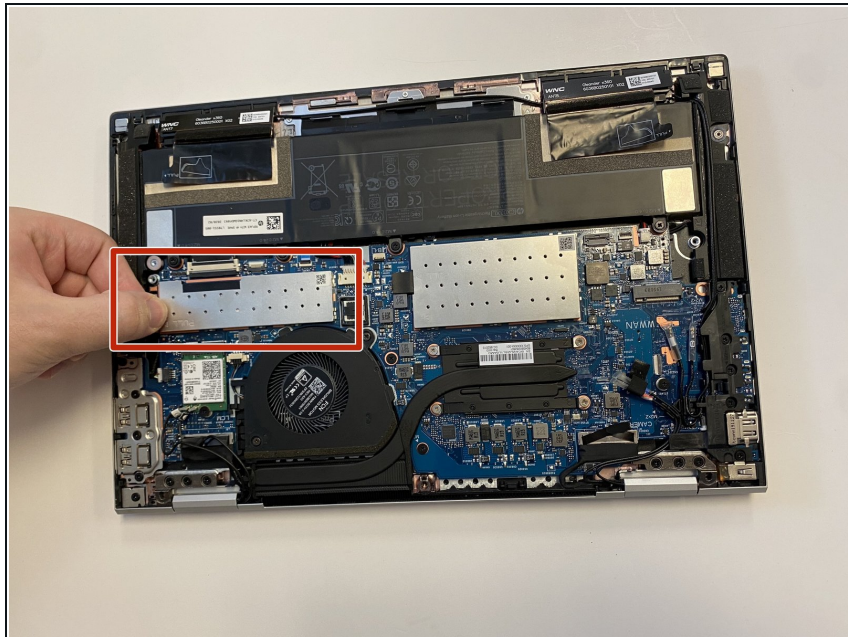
[Crucial P5 Plus PCIe M.2 2280SS SSD](#) (1)

Step 1 — Remove the backplate



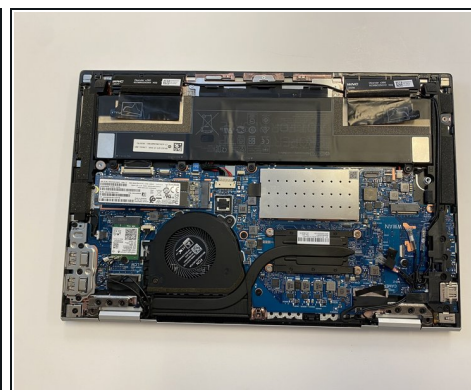
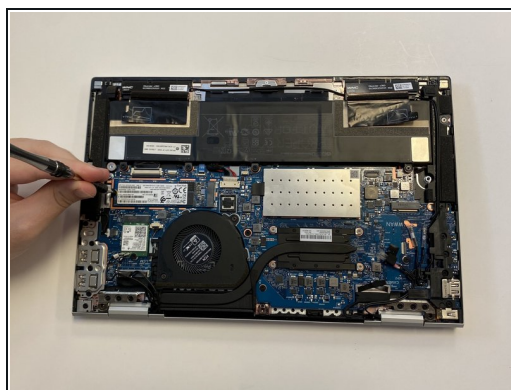
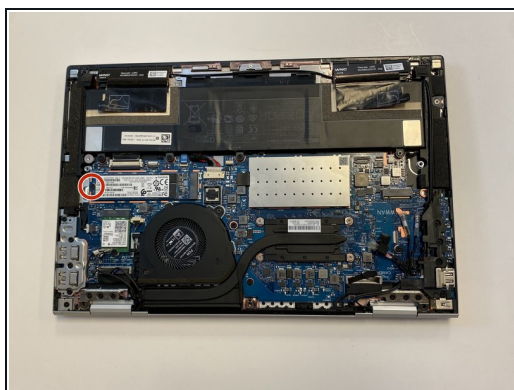
- Turn the computer over so the back is facing up.
- Use a Torx T5 screwdriver to remove the three 9 mm screws from the hinge of the device.
- Use a Torx T5 screwdriver to remove the two 7 mm screws from the left and right mid-section of the case.
- Lift the backplate from the computer.

Step 2 — Remove the metal shield covering the SSD



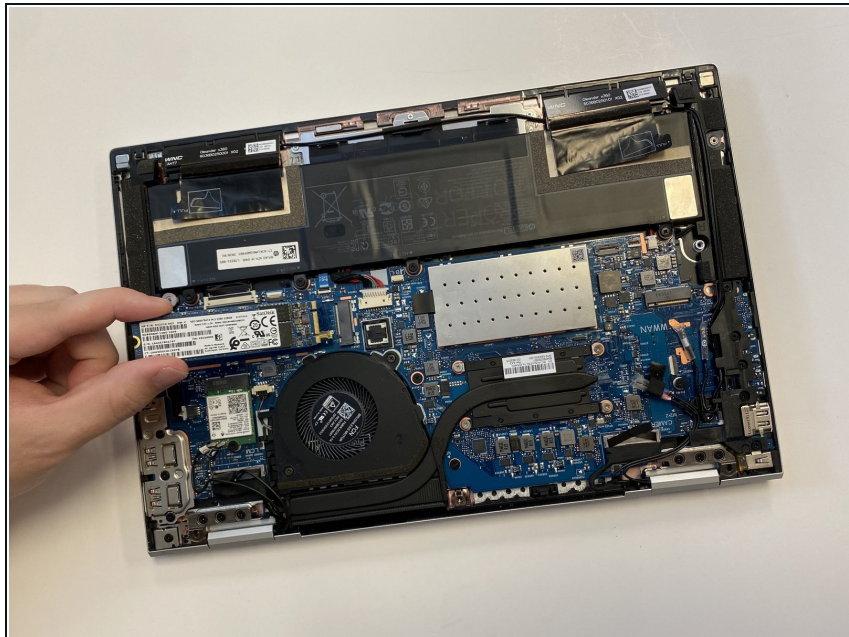
- Lift the metal shielding off of the solid state drive.

Step 3 — Remove the screw



- Use a Phillips #0 screwdriver to remove the 4 mm screw that secures the SSD.

Step 4 — Remove the SSD



- Gently pull the SSD free from the M.2 socket.

To reassemble your device, follow these instructions in reverse order.