



# Samsung Galaxy Tab S7 Plus Screen Replacement

Follow this guide to replace the screen and...

Written By: Alex Diaz-Kokaisl



# INTRODUCTION

Follow this guide to replace the screen and remove the fingerprint scanner cable in your Samsung Galaxy Tab S7+ Wi-Fi only.

Note: this guide is for the Wi-Fi version. For the 5G version, click [here](#).

The screen has sensitive components, so there's a risk you'll damage it during the procedure. **Be sure to apply plenty of heat and be extremely careful during the prying stage.**

Before you begin, refer to the [Samsung Self-Repair document](#) for safety information.

**For your safety, fully discharge the battery before disassembling your tablet.** This reduces the risk of fire if the battery is accidentally damaged during the repair. If your battery is swollen, [take appropriate precautions](#).

Note: Retaining water resistance after the repair will depend on how well you reapply the adhesive, but your device will lose its IP (Ingress Protection) rating.

Some photos in this guide are from a different model and may contain slight visual discrepancies, but they won't affect the guide procedure.



## TOOLS:

[Tweezers](#) (1)  
[Spudger](#) (1)  
[iFixit Opening Picks \(Set of 6\)](#) (1)  
[iOpener](#) (1)  
[Suction Handle](#) (1)



## PARTS:

[Samsung Galaxy Tab S7+ \(Wi-Fi Only\)](#)  
[Screen - Genuine](#) (1)  
[Tesa 61395 Tape](#) (1)

## Step 1 — Heat the bottom edge



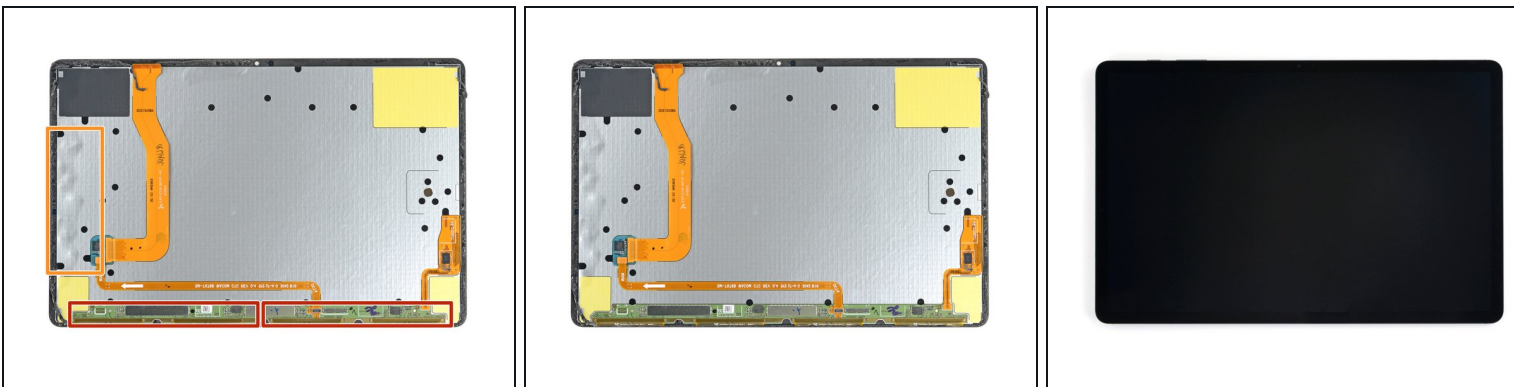
**⚠** Completely power off your device before you begin.

- Apply a [heated iOpener](#) to the bottom edge of the device to loosen the adhesive underneath.

**i** The display adhesive of the Galaxy Tab S7+ is extremely strong, and it's likely you need to reheat and reapply the iOpener several times before starting the display removal and during the removal procedure.

**i** A hair dryer, heat gun, or hot plate may also be used, but be careful not to overheat the device.

## Step 2 — Screen removal information



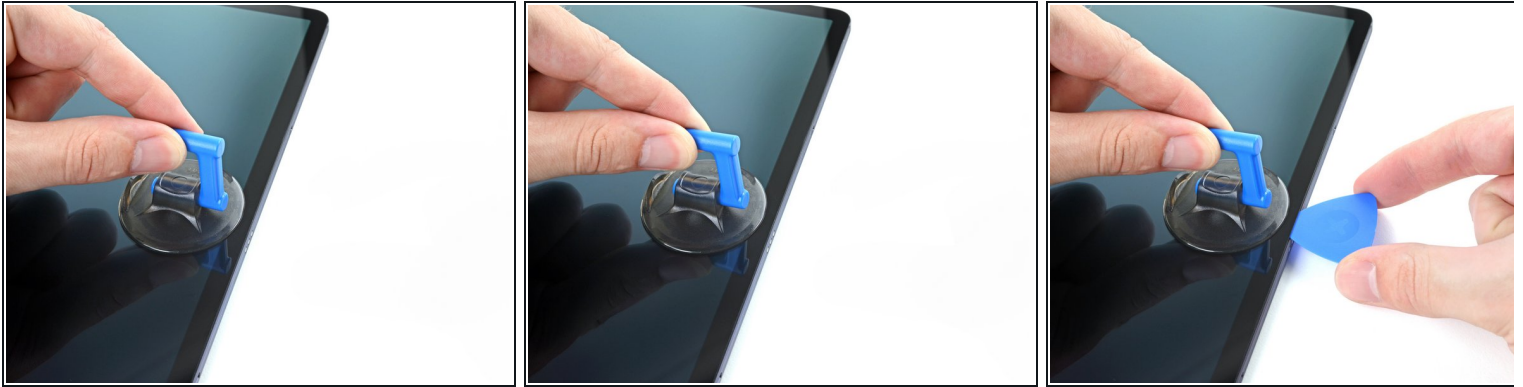
- While you're waiting for the adhesive to loosen, note the following:
  - There's a long circuit board attached to the screen that sits parallel to the bottom edge.

**⚠** Don't insert the pick more than 2 mm to avoid damaging the circuit board.

- This image shows an example of the display separating from the glass panel.

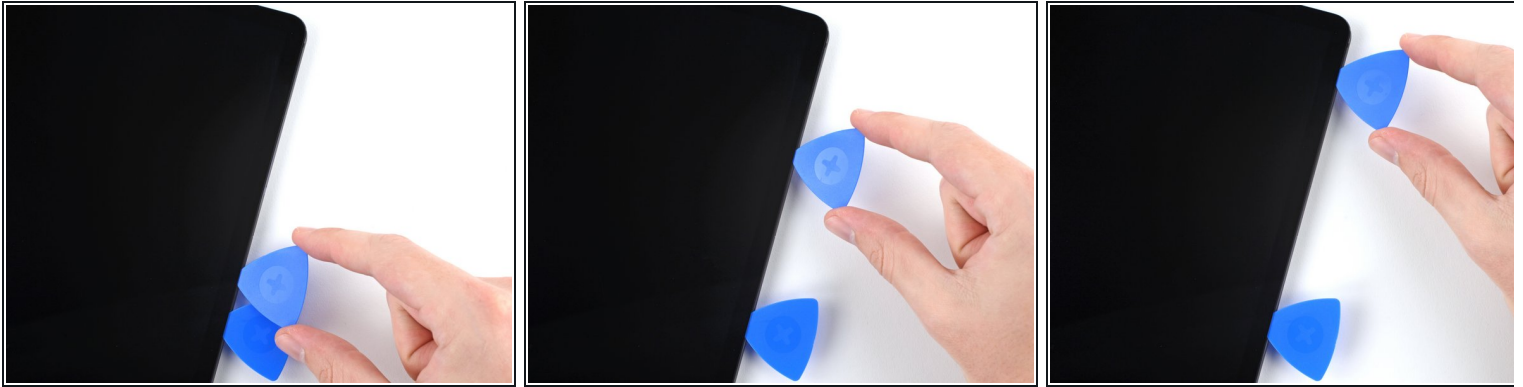
**⚠** Don't insert the pick more than 3 mm to avoid damaging the display.

### Step 3 — Insert an opening pick



- Once the screen is warm to touch, apply a suction handle to the bottom edge of the screen and as close to the edge as possible.
- ⓘ If your screen is badly cracked, covering it with a layer of clear packing tape may allow the suction cup to adhere. Alternatively, very strong tape may be used instead of the suction handle. If all else fails, you can superglue the suction cup to the screen.
- Lift the screen with the suction handle to create a small gap between the screen and the frame.
- Insert an opening pick into the gap between the frame and the screen.  
**⚠ Don't insert the pick more than 2 mm to avoid damaging the circuit board.**
- Leave the opening pick in place to prevent the adhesive from resealing.

## Step 4 — Separate the bottom adhesive



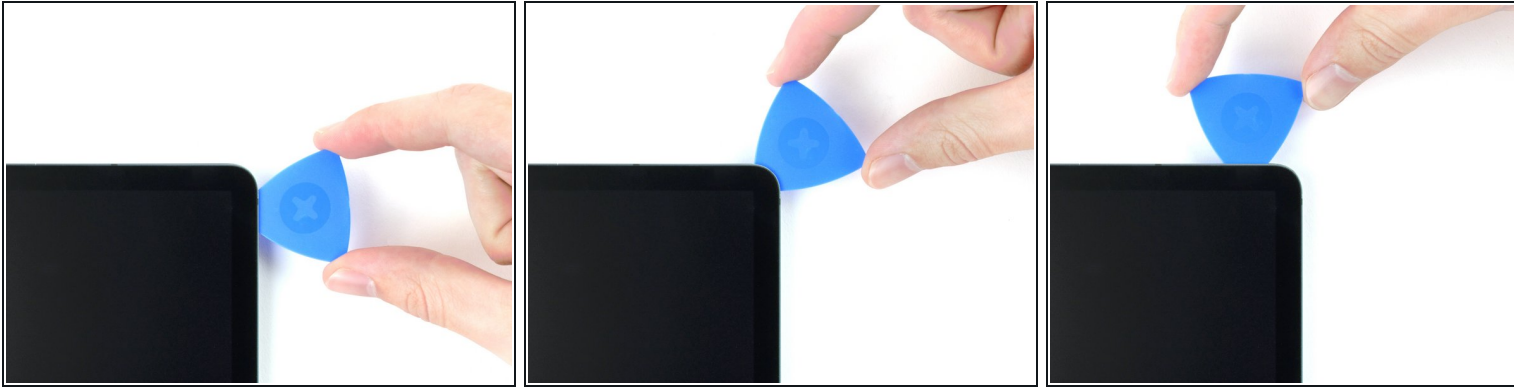
- Insert a new opening pick into the gap you created.
- Slide the new pick along the bottom edge of the device towards the bottom-right corner.

## Step 5 — Heat the right edge



- Apply a [heated iOpener](#) to the right edge of the device to loosen the adhesive underneath.

## Step 6 — Separate the bottom-right corner adhesive



- Rotate the opening pick around the bottom-right corner of the device.
- Leave the opening pick in place to prevent the adhesive from resealing.

## Step 7 — Separate the right adhesive



- Insert a new opening pick into the gap you created.
  - ⚠ Don't insert the pick more than 3 mm to avoid damaging the components along the right edge.
- Slide the new pick along the right edge of the device towards the top-right corner.

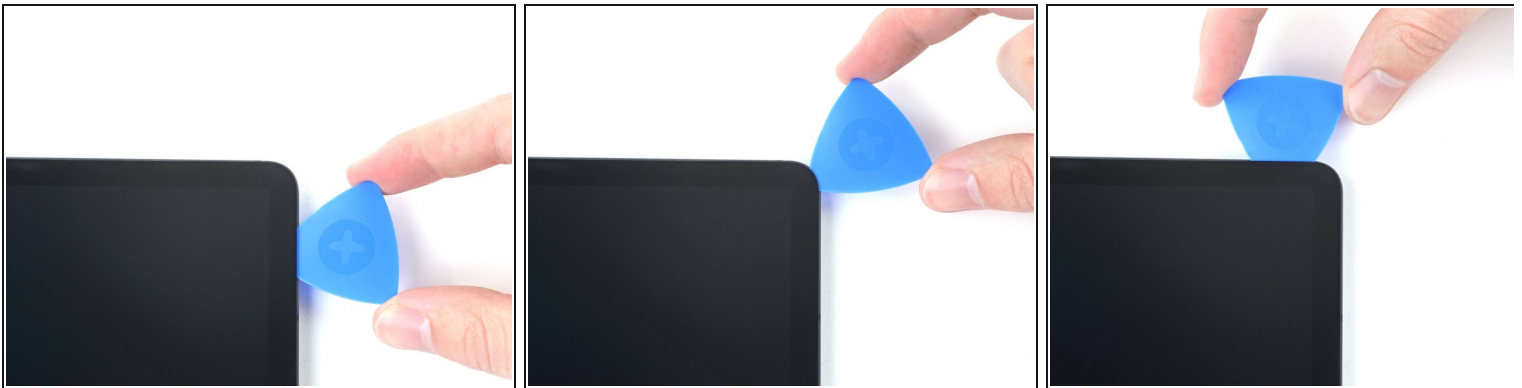


## Step 8 — Heat the top edge



- Apply a [heated iOpener](#) to the top edge of the device to loosen the adhesive underneath.

## Step 9 — Separate the top-right corner adhesive



- Rotate the opening pick around the top-right corner of the device.
- Leave the opening pick in place to prevent the adhesive from resealing.

## Step 10 — Separate the top adhesive



- Insert a new opening pick into the gap you created.
- Slide the new pick along the top edge of the device towards the top-left corner.

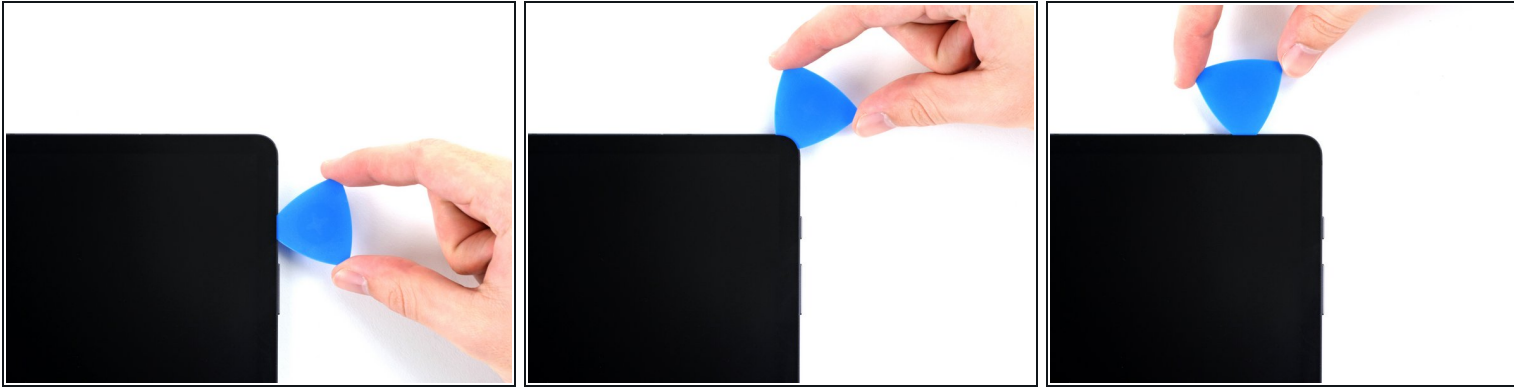
## Step 11 — Heat the left edge



- Apply a [heated iOpener](#) to the left edge of the device to loosen the adhesive underneath.

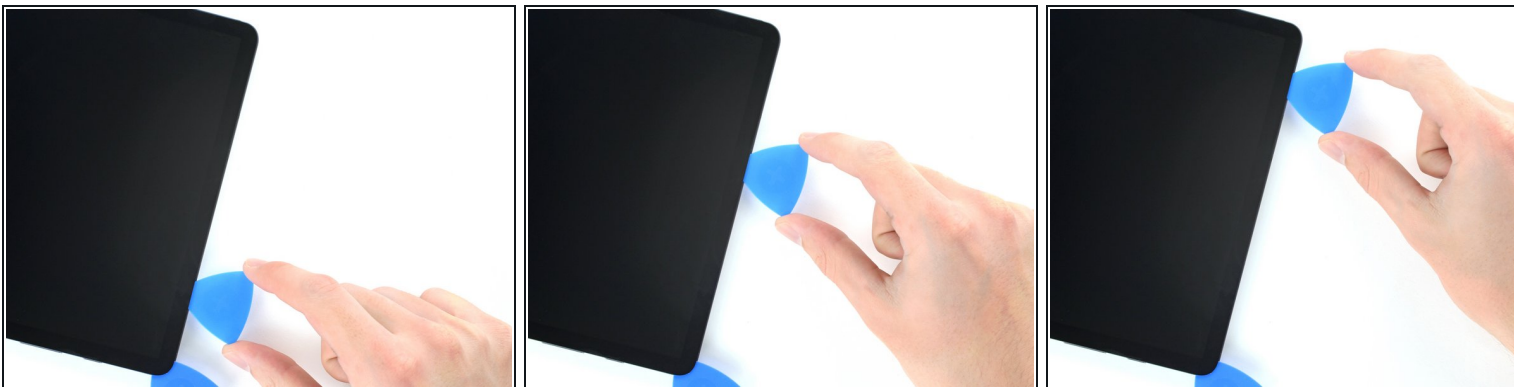


## Step 12 — Separate the top-left corner adhesive



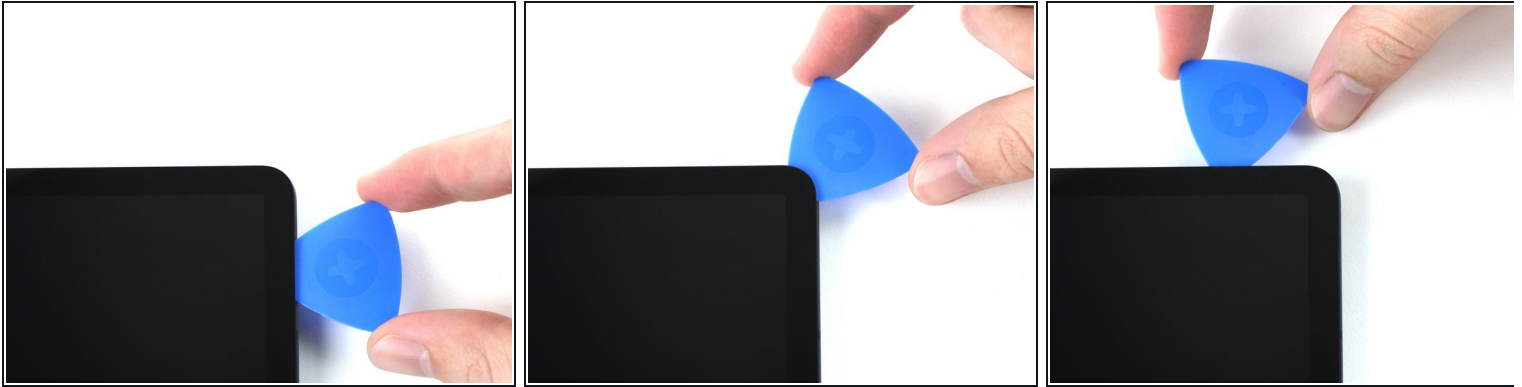
- Rotate the opening pick around the top-left corner of the device.
- Leave the opening pick in place to prevent the adhesive from resealing.

## Step 13 — Separate the left adhesive



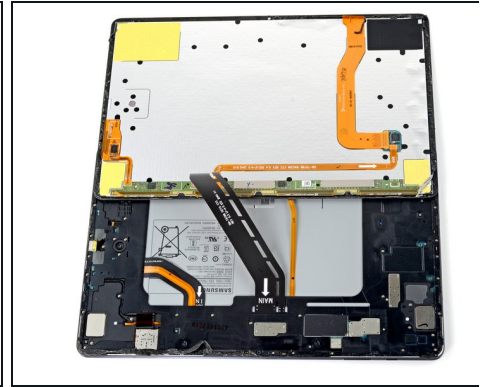
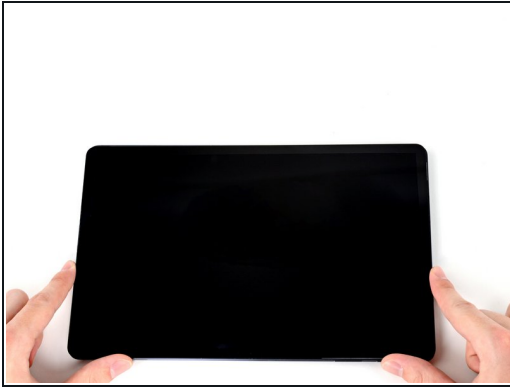
- Insert a new opening pick into the gap you created.
- Slide the new pick along the left edge of the device towards the bottom-left corner.

## Step 14 — Separate the bottom-left corner adhesive



- Rotate the opening pick around the bottom-left corner of the device.
  - Leave the opening pick in place to prevent the adhesive from resealing.
- i** At this point, the perimeter of the screen should be separated from the frame. If there's still resistance around the edges of the screen, use an opening pick to cut the adhesive again.

## Step 15 — Remove the screen



**⚠ Don't try to remove the screen all the way yet; it's still connected to the frame by a flex cable.**

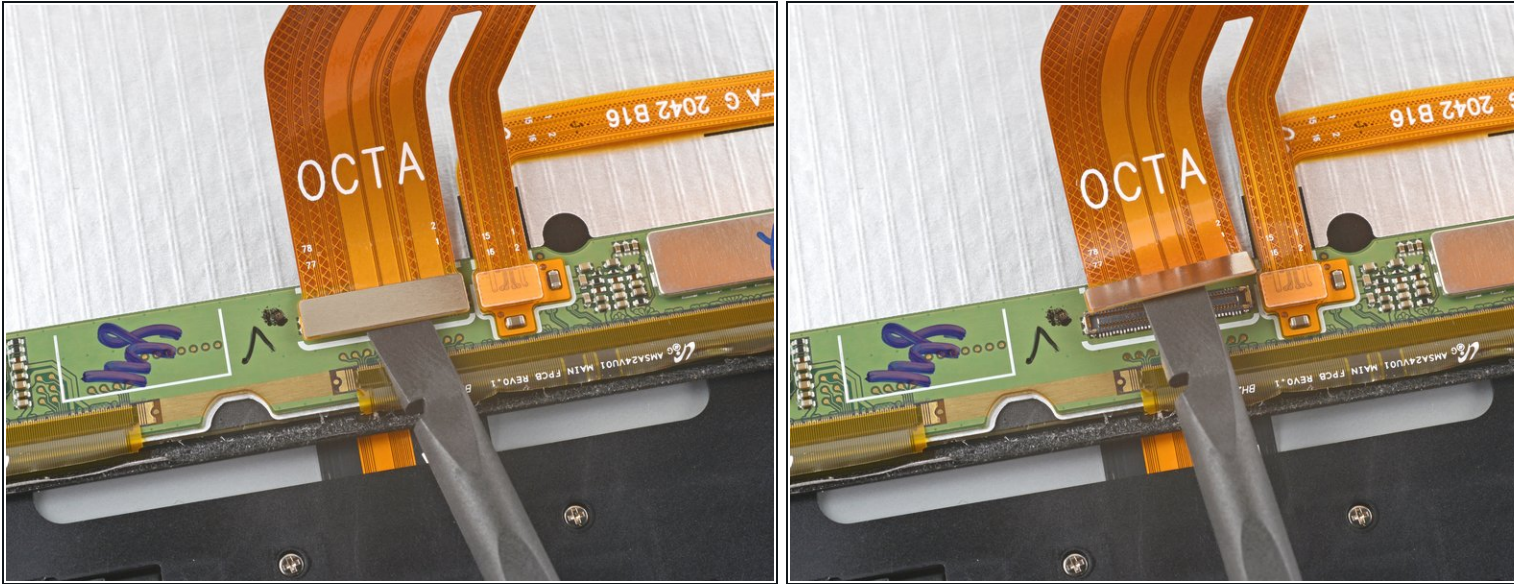
- With the top of the device facing you, pull the screen up and away from you like you're opening a book.
- Rest the screen upside down and parallel to the frame before continuing.

**⚠ Don't twist the screen or move it too far away from the frame to avoid damaging the flex cable.**

**🔧 During reassembly:**

- This is a good point to power on your tablet and test all functions before sealing it up. Be sure to power your tablet back down completely before you continue working.
- Remove any adhesive chunks with a pair of tweezers or your fingers. Use some high concentration (over 90%) isopropyl alcohol to wipe away any adhesive residue.
- If you're using Samsung custom-cut adhesives, [follow this guide](#). If you're using double-sided tape, [follow this guide](#).

## Step 16 — Disconnect the display cable



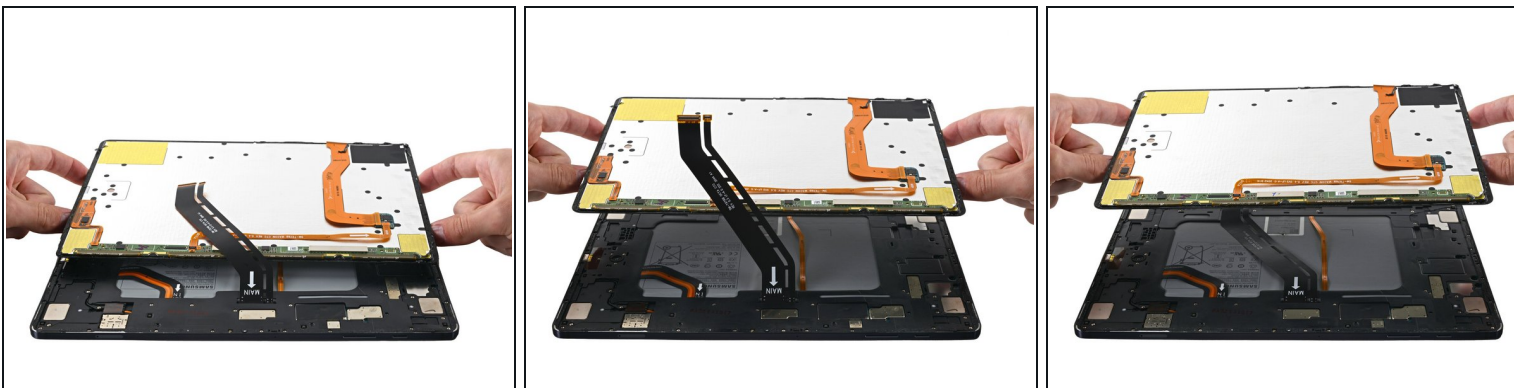
- Use the flat end of a spudger to pry up and disconnect the display cable's press connector secured to the screen.
- ☑ To re-attach [press connectors](#) like this one, carefully align and press down on one side until it clicks into place, then repeat on the other side. Do not press down on the middle. If the connector is misaligned, the pins can bend, causing permanent damage.

## Step 17



- Use tweezers, or you fingers, to hold the display cable in place.
  - Use the flat end of a spudger to pry up and disconnect the fingerprint sensor's press connector attached to the display cable.
- ☒ Take note of the display cable's position; you will need to bend it in the same way when connecting a new screen.

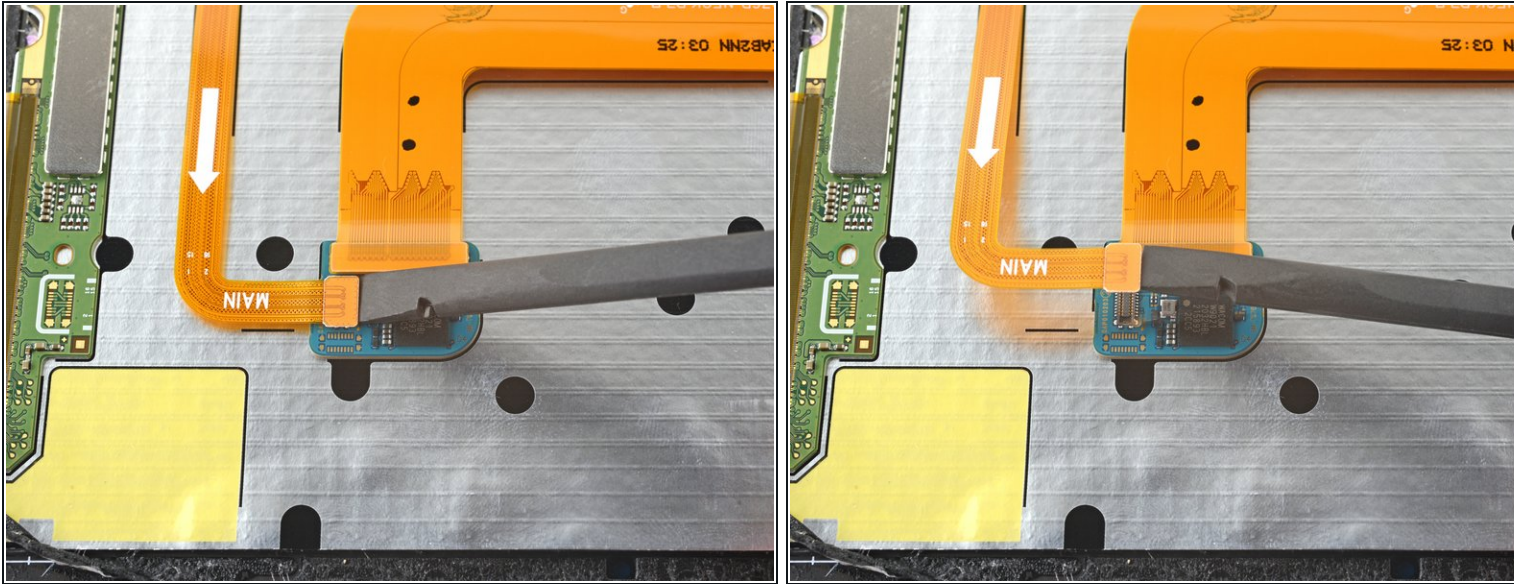
## Step 18 — Remove the screen



- Remove the screen from the frame.

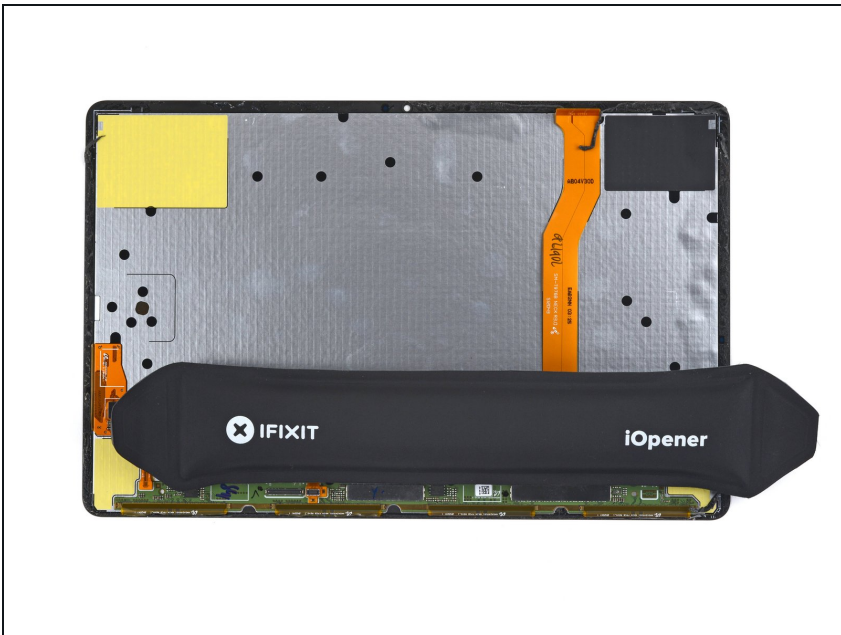


## Step 19 — Disconnect the fingerprint scanner cable



- Use the flat end of a spudger to pry up and disconnect the fingerprint scanner cable's press connector.

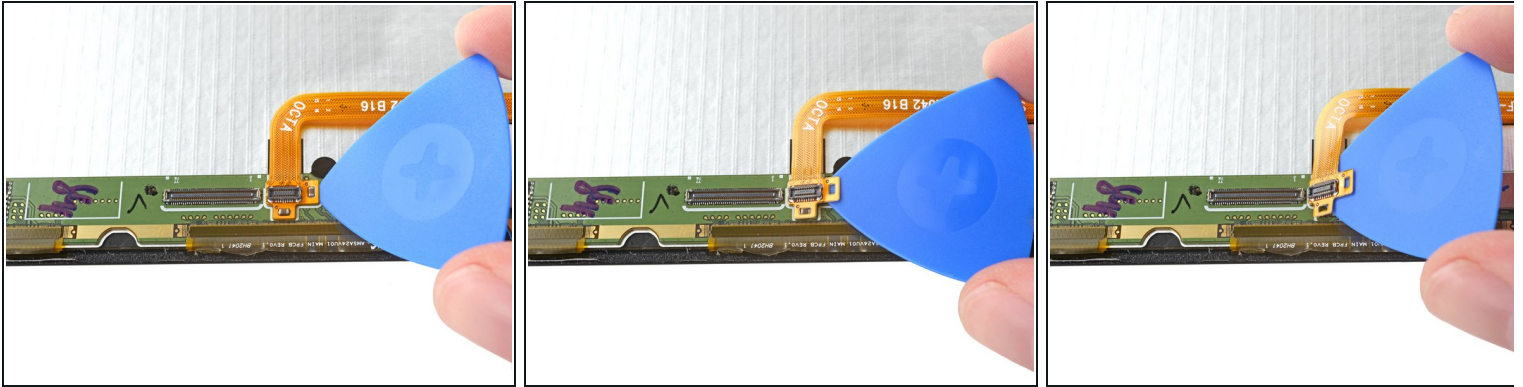
## Step 20 — Heat the fingerprint sensor cable



- ⓘ The fingerprint sensor cable is secured to the screen by adhesive; use heat to avoid tearing the cable during the removal procedure.
- Apply a heated iOpener to the bottom edge of the screen for two minutes.
- ⓘ A hair dryer, heat gun, or hot plate may also be used, but be careful not to overheat the device.

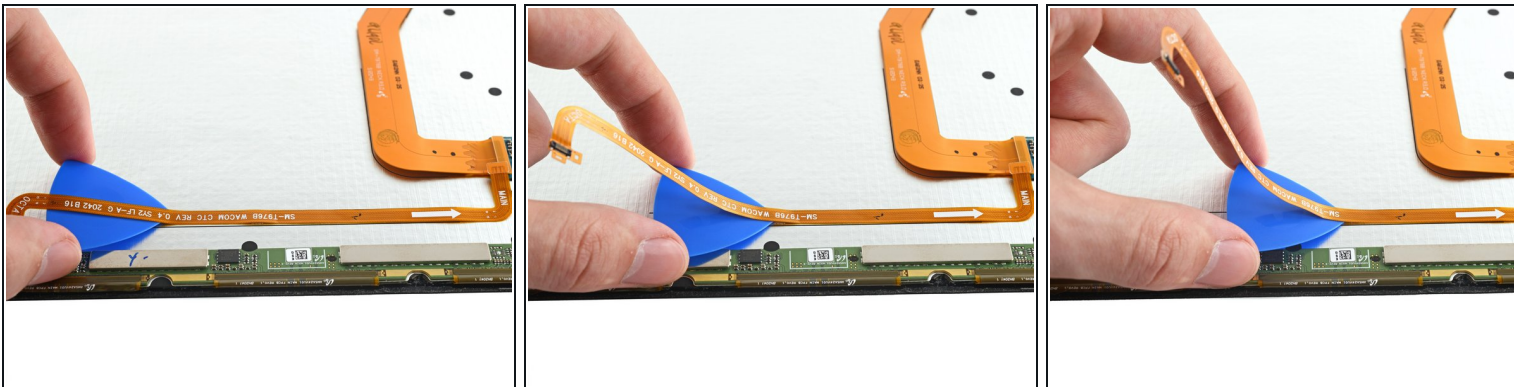


## Step 21 — Separate the connector's adhesive



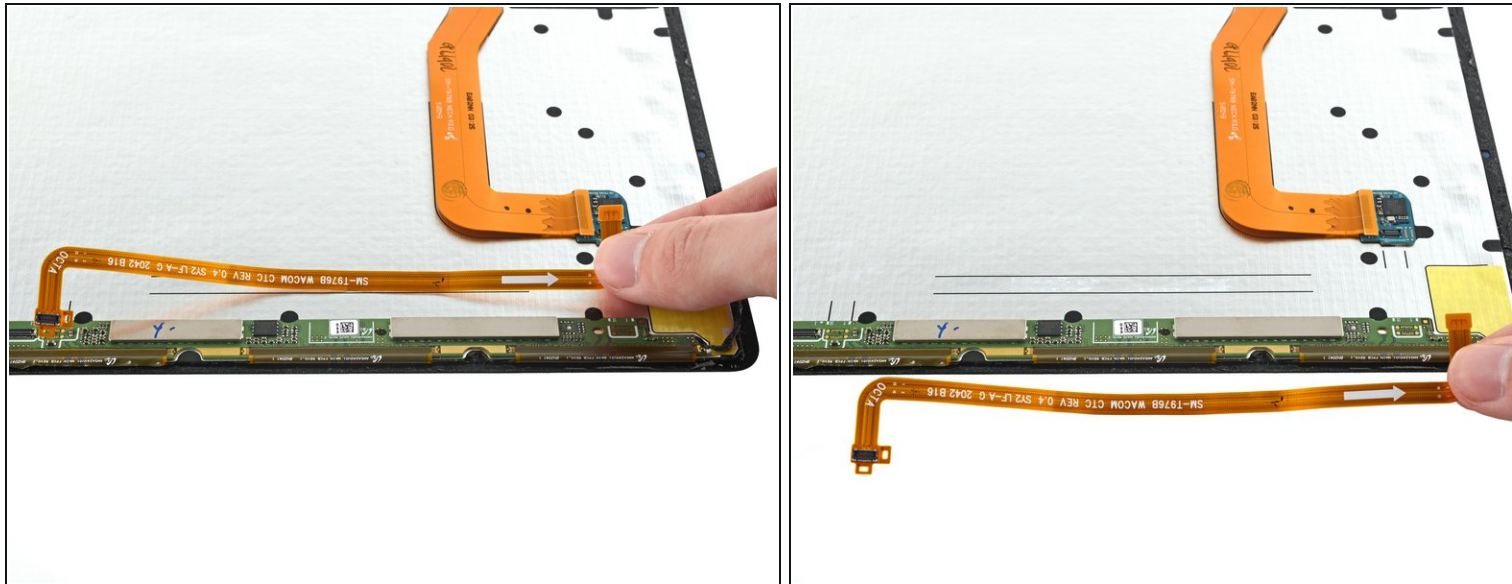
- Insert an opening pick between the fingerprint cable's press connector and the circuit board near the bottom of the screen.
- Slice the adhesive while prying up with the pick to separate the press connector from the screen.

## Step 22



- Slice with an opening pick along the bottom of the fingerprint sensor's cable to separate it from the screen.

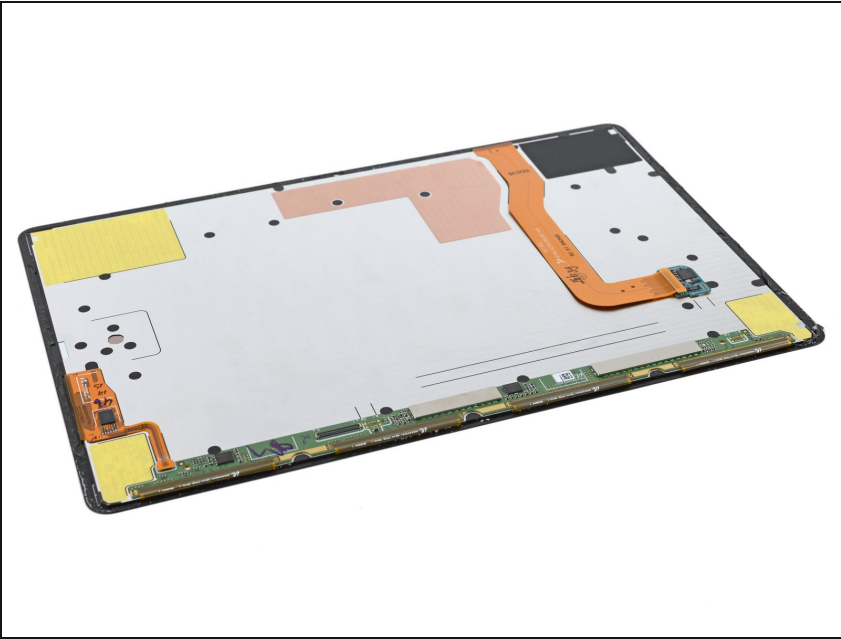
## Step 23 — Remove the fingerprint sensor cable



- Use tweezers, or your fingers, to remove the fingerprint sensor cable.

☑ Set the cable aside. You'll reuse it during reassembly.

## Step 24 — Only the screen remains



- You're now left with the screen.
- ✦ To ensure that your optical fingerprint sensor is secure and accurate, perform a fingerprint sensor calibration after you've reassembled the device:
  - ⓘ You'll need the calibration toolkit, which includes three rubber calibration blocks.
- [Download the Self Repair Assistant](#) on your device.
- [Follow this calibration guide](#).
  - ⓘ Alternatively, you can [read the Samsung Self-Repair document to learn how to calibrate your sensor](#). The fingerprint sensor calibration instructions start on page 28.

Compare your new replacement part to the original part—you may need to transfer remaining components or remove adhesive backings from the new part before you install it.

**To reassemble your device, follow the instructions in reverse order** and perform the opposite actions, e.g., "reattach" instead of "removing." Skip steps that use heating and prying, and pay close attention to the bullets as you work through the steps.

After you've completed the repair, download the Samsung Members App from the Galaxy Store or the Play Store, and [follow the Samsung Self-Repair document](#) (beginning page 9) to make sure your device is fully functional.

Take your e-waste to an [R2 or e-Stewards certified recycler](#).

Repair didn't go as planned? Try some [basic troubleshooting](#), or ask our [Samsung Galaxy Tab S7+ Answers community](#) for help.

