



Dell Latitude 9410 2-in-1 Base Panel Replacement

How to replace/remove Dell Latitude 9410 2-in-1 base panel.

Written By: Stephanie Chavez Cardenas





TOOLS:

- [Phillips #00 Screwdriver](#) (1)
-

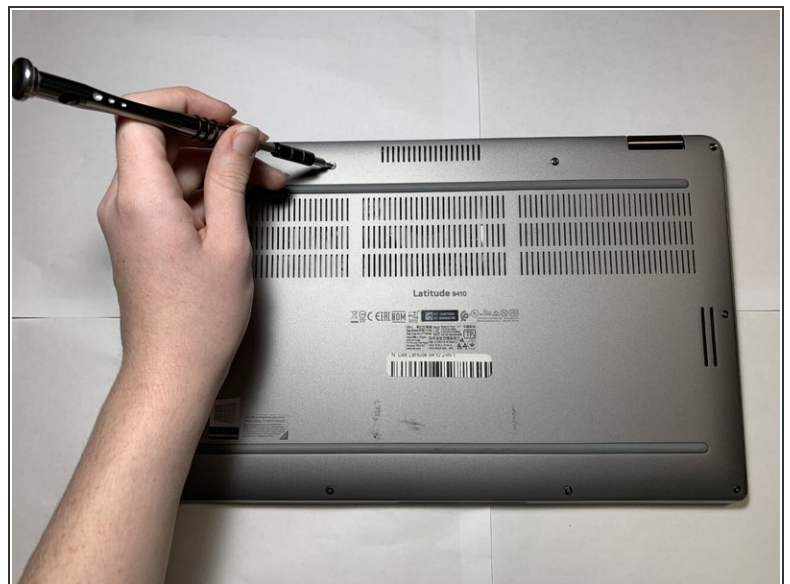
Step 1 — Base Panel



⚠ Ensure that the laptop is unplugged and powered off before beginning.

- Place the laptop upside down on a flat surface.

Step 2



- Use a Phillips #00 screwdriver to loosen the ten captive screws.

i The screws are permanently fastened to the base panel; do not attempt to remove them.

Step 3



- Carefully lift off the back panel.

To reassemble your device, follow these instructions in reverse order.