



Dell XPS 15 9550 Solid State Drive Replacement

The may need to be replaced if you are running...

Written By: Zach Jones



INTRODUCTION

The may need to be replaced if you are running out of storage space, or if you have saved files being corrupted. If the battery works but the computer will not boot up, it may be the SSD. On the Dell XPS 15 9550, it is easily accessible after the back panel is removed.



TOOLS:

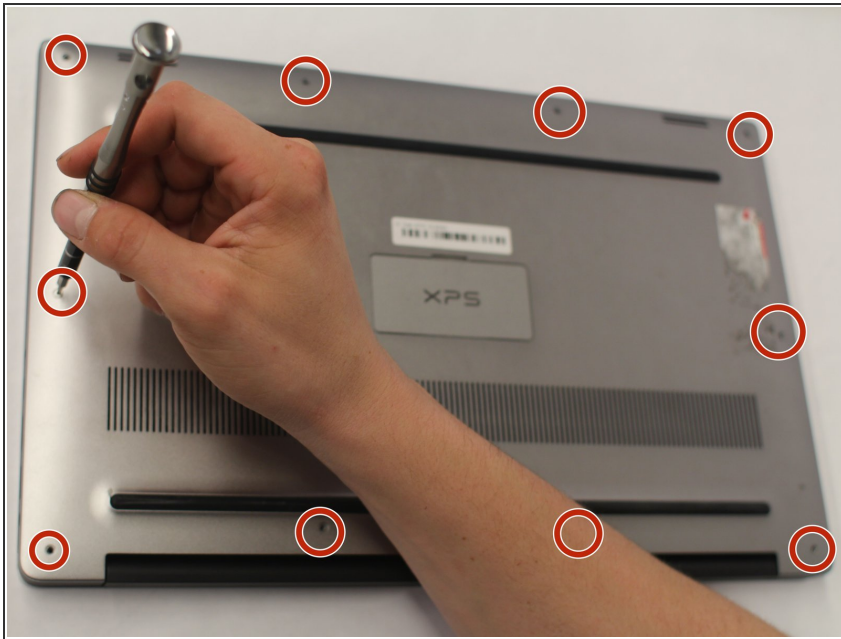
- [T5 Torx Screwdriver](#) (1)
- [Phillips #00 Screwdriver](#) (1)



PARTS:

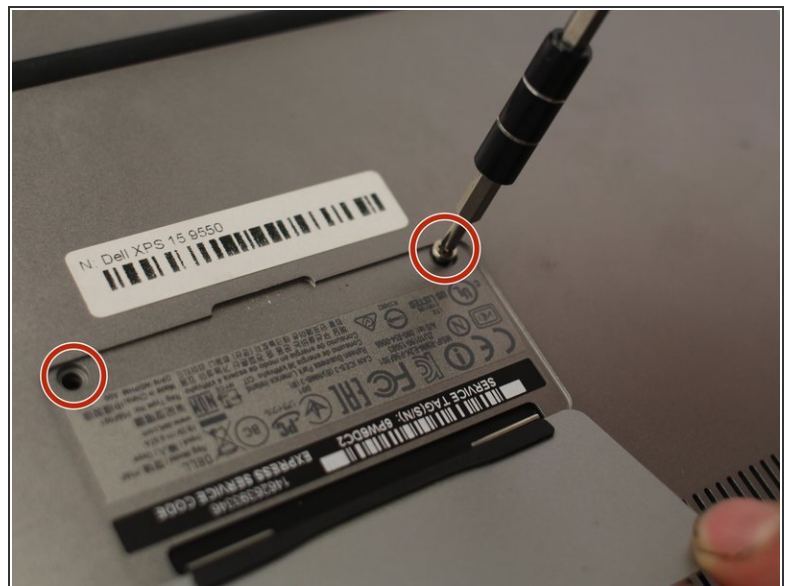
- [Crucial P3 NVMe PCIe M.2 2280SS SSD](#) - solid performance, switching from HDD or SATA to NVMe™ (1)
- [Crucial P3 Plus NVMe PCIe M.2 2280SS SSD](#) - fast Gen4 NVMe™ storage for data-intensive applications (1)
- [Crucial P5 Plus NVMe PCIe M.2 2280SS SSD](#) - professionals, creatives, and hardcore gamers (1)

Step 1 — Back/Underside Panel



- Turn the laptop upside down.
- ⚠ **Make sure the laptop is turned off.**
- Use a T5 Torx Screwdriver to remove the ten 3 mm long screws from the perimeter of the back of the laptop.

Step 2



- Open up the information panel door (on the middle of the back side).
- While holding the door open, use a Phillips #00 Screwdriver to remove the two 10 mm long screws.

Step 3



- Carefully lift the 2 corners of the back panel close to the hinge upwards, to release the whole panel.

⚠ Do not force the panel off. If it does not come off easily, try to use a plastic spudger where it is stuck.

Step 4 — Solid State Drive



- Use a Phillips #00 screwdriver to remove the SSD screw.

Step 5



- Gently remove the SSD.

To reassemble your device, follow these instructions in reverse order.