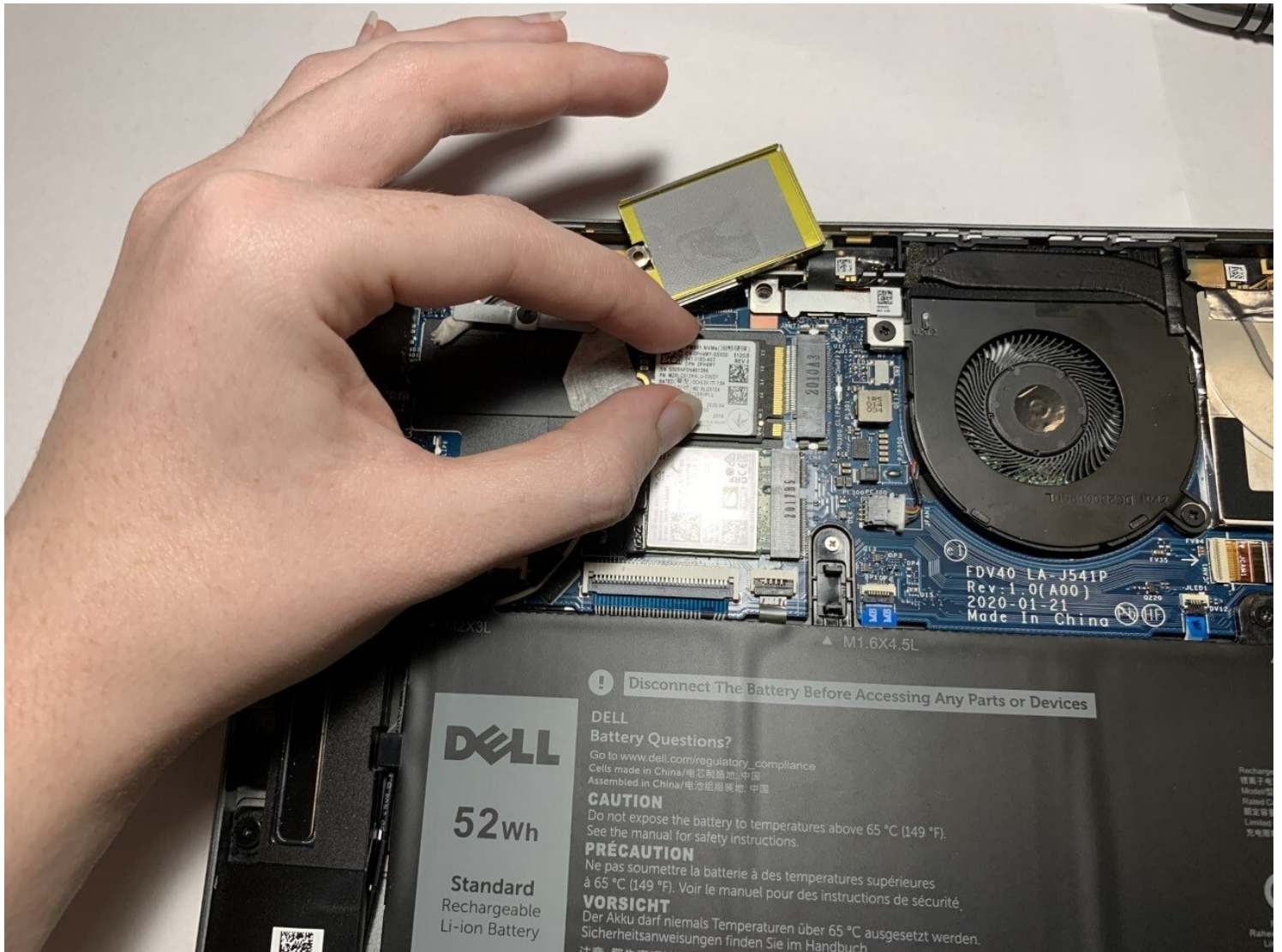




Dell Latitude 9410 2-in-1 SSD Replacement

If you're finding many corrupted files or data,...

Written By: Jessica Stephens



INTRODUCTION

If you're finding many corrupted files or data, software incompatibility, hard drive errors, or an overall faulty SSD, then use this guide to replace the solid-state drive (SSD) of the Dell Latitude 9410 2-in-1. This guide should fix most file and incompatibility related issues on your laptop.

although, be sure to check the [troubleshooting page](#) before moving forward with replacement in case your problem is unrelated.

TOOLS:

Phillips #00 Screwdriver (1)

PARTS:


Crucial P3 NVMe PCIe M.2 2280SS SSD (1)

Crucial P3 Plus NVMe PCIe M.2 2280SS SSD (1)

Crucial P5 Plus PCIe M.2 2280SS SSD (1)

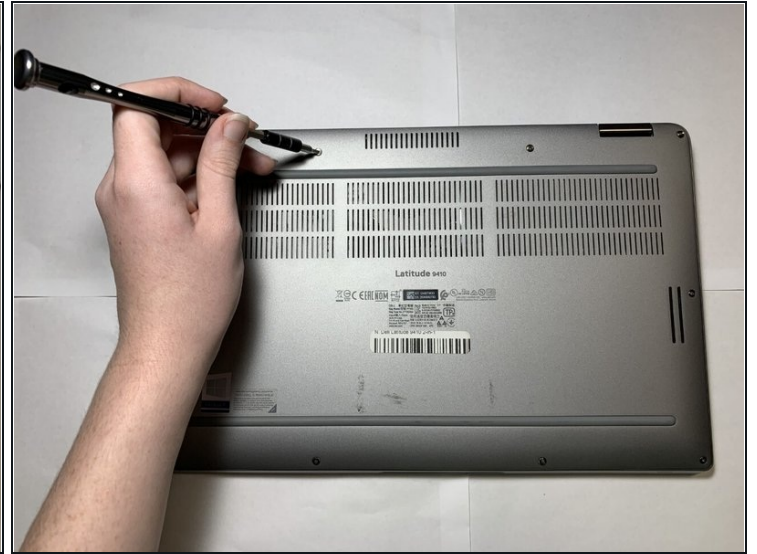
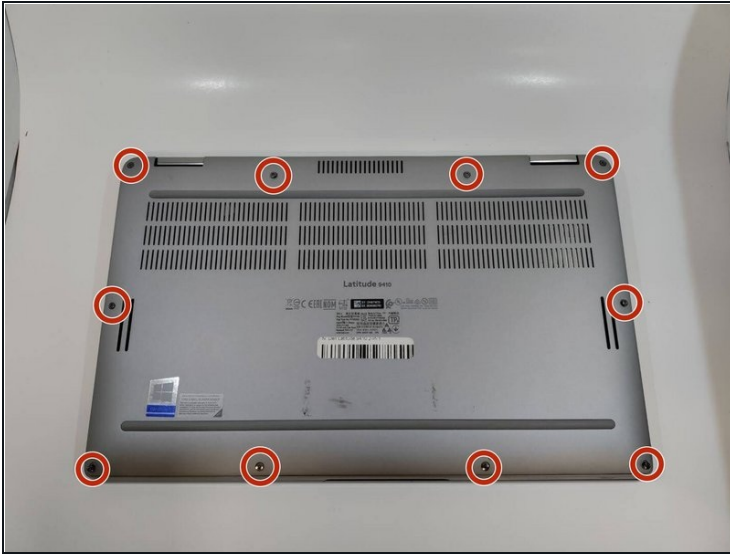
Step 1 — Base Panel



 Ensure that the laptop is unplugged and powered off before beginning.

- Place the laptop upside down on a flat surface.

Step 2



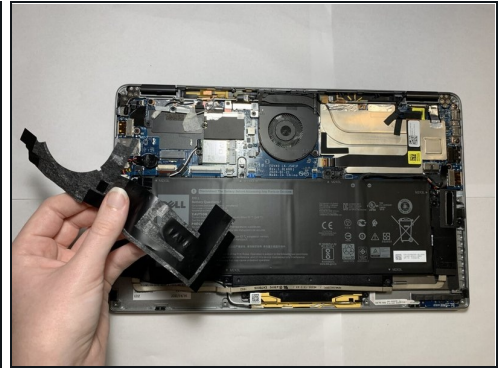
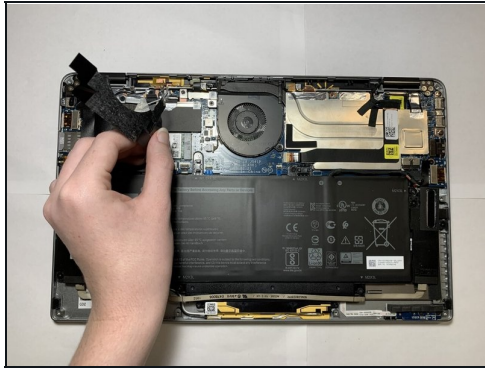
- Use a Phillips #00 screwdriver to loosen the ten captive screws.
- ⓘ The screws are permanently fastened to the base panel; do not attempt to remove them.

Step 3



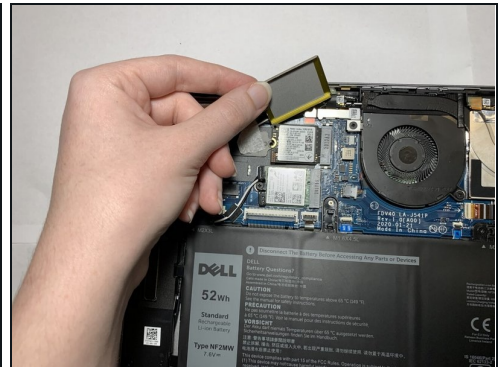
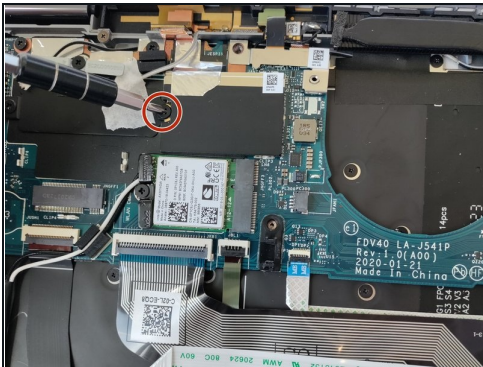
- Carefully lift off the back panel.

Step 4 — SSD



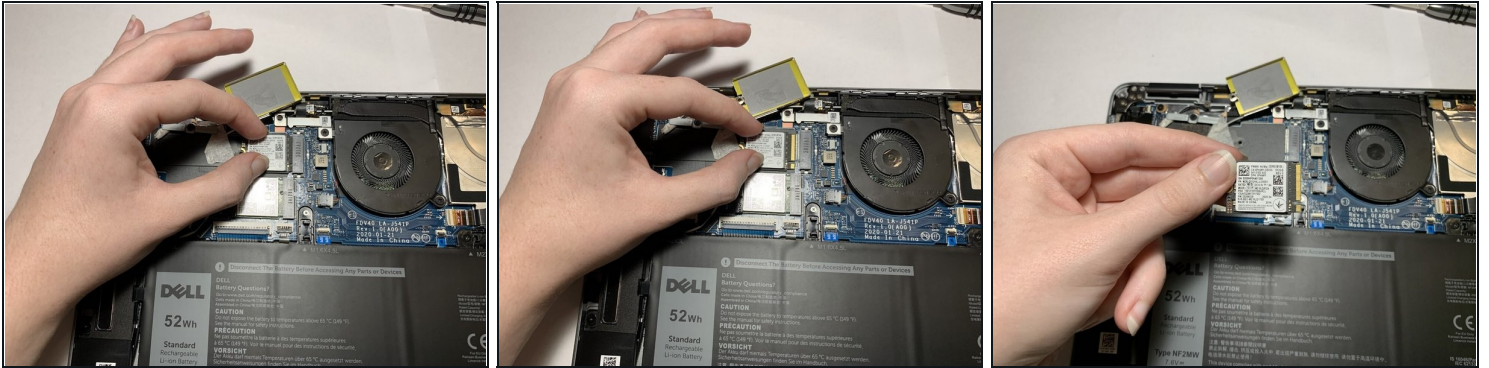
- Carefully peel back and remove the black tape around the top left corner of the motherboard.

Step 5



- Use a Phillips #00 screwdriver to remove the 2 mm screw, loosening the bracket that covers the SSD.
 - Carefully lift the off the bracket.
- ① The bracket is attached to the laptop and cannot be removed completely.

Step 6



- Grip the SSD and pull directly backward until the SSD releases from its port.

To reassemble your device, follow these instructions in reverse order.