



# Dell Latitude 9410 2-in-1 CMOS Battery Replacement

How to replace the Dell Latitude 9410 2-in-1 CMOS battery.

Written By: Jessica Stephens



## INTRODUCTION

Use this guide to replace the coin cell battery (CMOS) of the Dell Latitude 9410 2-in-1.

If your computer runs slow, receives “Booting Error” messages, or loses BIOS settings when turned off, the CMOS may need to be replaced. The typical CMOS lifespan is 3-5 years, so if you're experiencing issues related to a failing CMOS, it's likely time to replace it. Be sure to check the [troubleshooting page](#) before moving forward with replacement.

---

### TOOLS:

- [Tweezers](#) (1)
  - [Phillips #00 Screwdriver](#) (1)
-

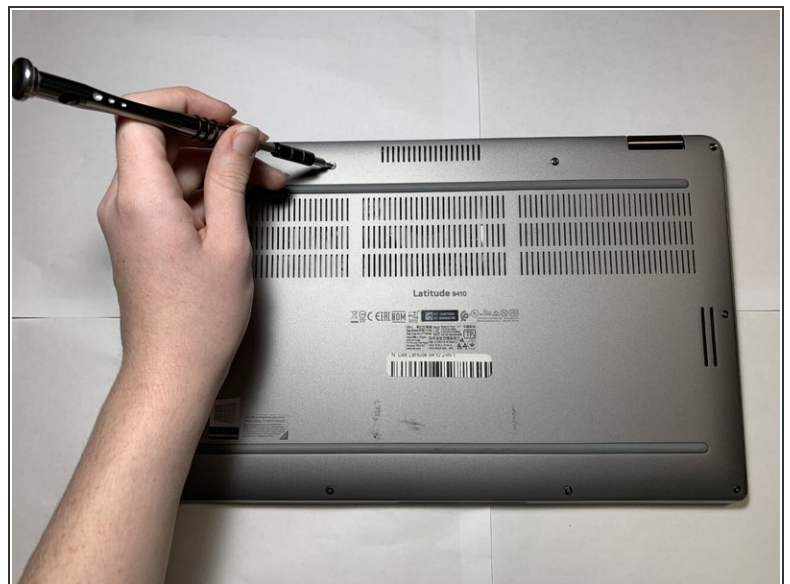
## Step 1 — Base Panel



**⚠** Ensure that the laptop is unplugged and powered off before beginning.

- Place the laptop upside down on a flat surface.

## Step 2



- Use a Phillips #00 screwdriver to loosen the ten captive screws.

**i** The screws are permanently fastened to the base panel; do not attempt to remove them.

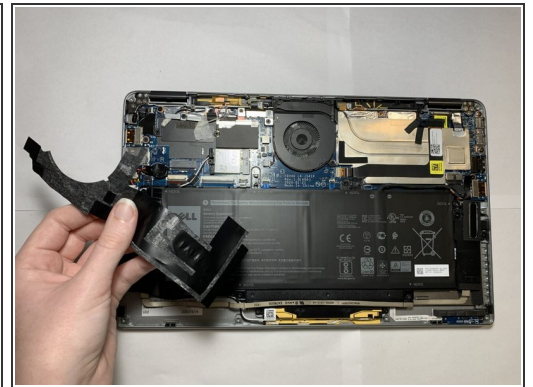
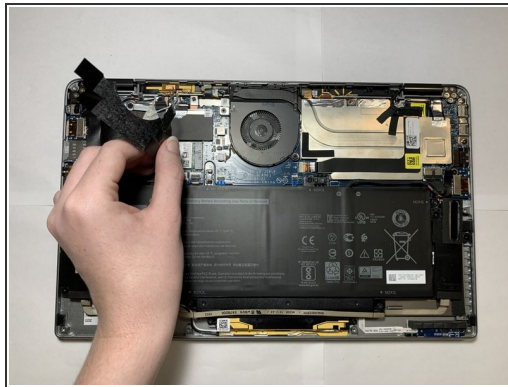
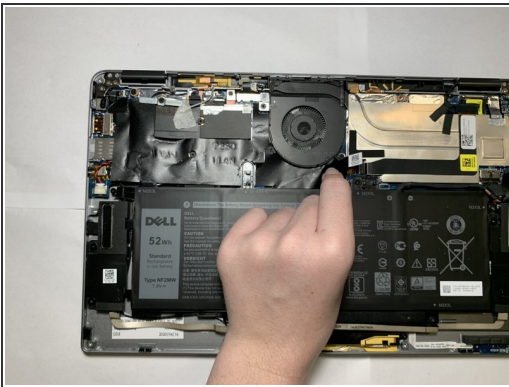


### Step 3



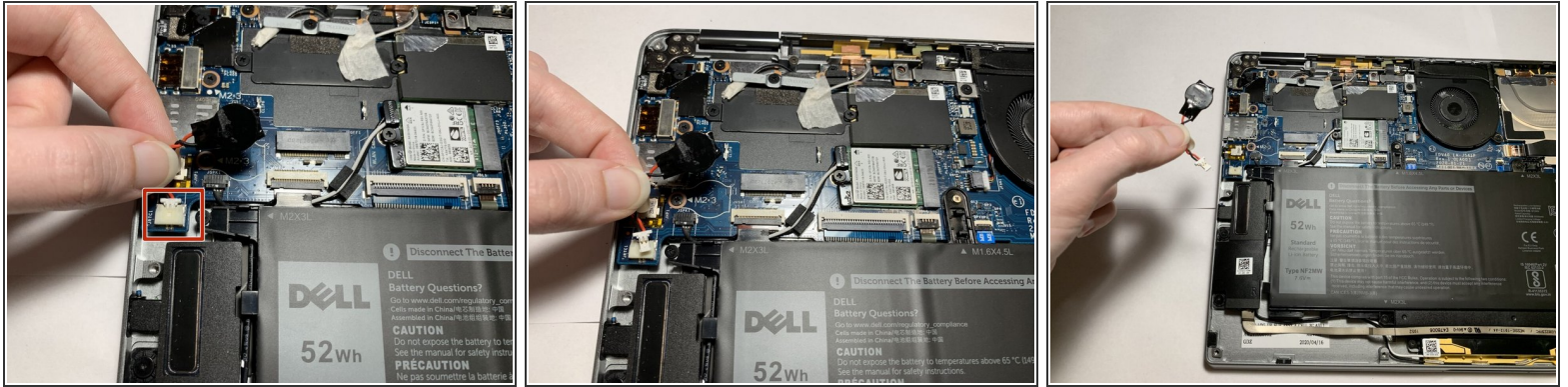
- Carefully lift off the back panel.

### Step 4 — CMOS Battery



- Carefully peel back and remove the black tape around the top left corner of the motherboard.

## Step 5



- Grip the CMOS cable as close as possible to the plug, and gently pull directly backwards, in the direction of the cables, until the CMOS cable disconnects from the motherboard.
- ⓘ If the cable is hard to pull out by hand, use tweezers to get a better grip on the cable connector.

To reassemble your device, follow these instructions in reverse order.