



Dell Latitude 9410 2-in-1 Battery Replacement

How to replace the battery in a Dell Latitude 9410 2-in-1.

Written By: Jessica Stephens



INTRODUCTION

Use this guide to replace the battery of the Dell Latitude 9410 2-in-1.

Failure to charge or inability to hold a charge may indicate a faulty battery. Check the [troubleshooting page](#) before moving forward with the battery replacement as there are other potential causes that are easier to address, such as a faulty charging port.



TOOLS:

- [Tweezers](#) (1)
 - [Phillips #00 Screwdriver](#) (1)
-

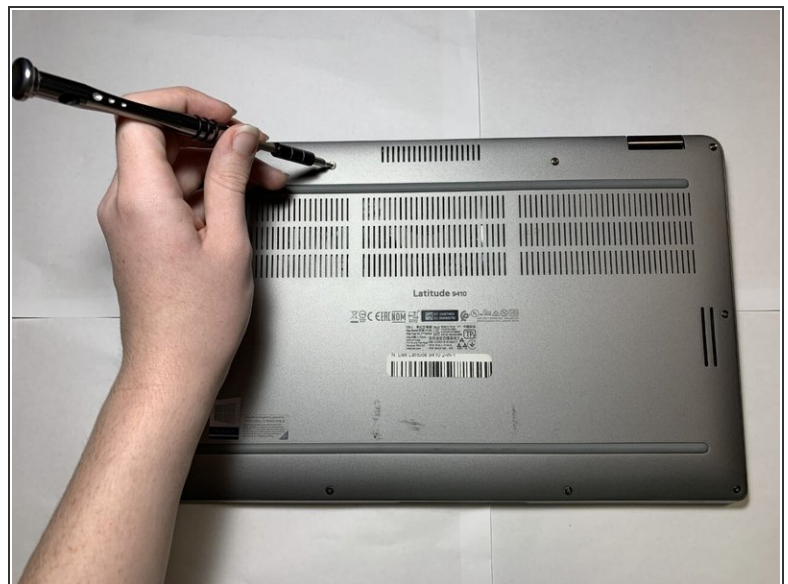
Step 1 — Base Panel



⚠ Ensure that the laptop is unplugged and powered off before beginning.

- Place the laptop upside down on a flat surface.

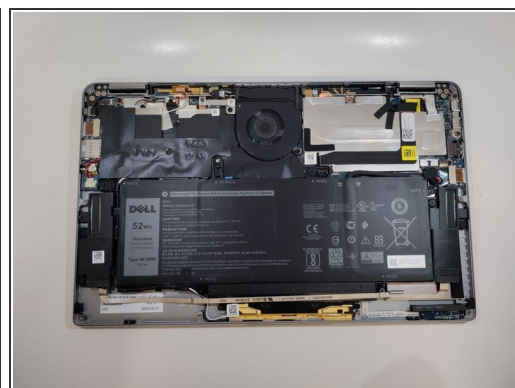
Step 2



- Use a Phillips #00 screwdriver to loosen the ten captive screws.

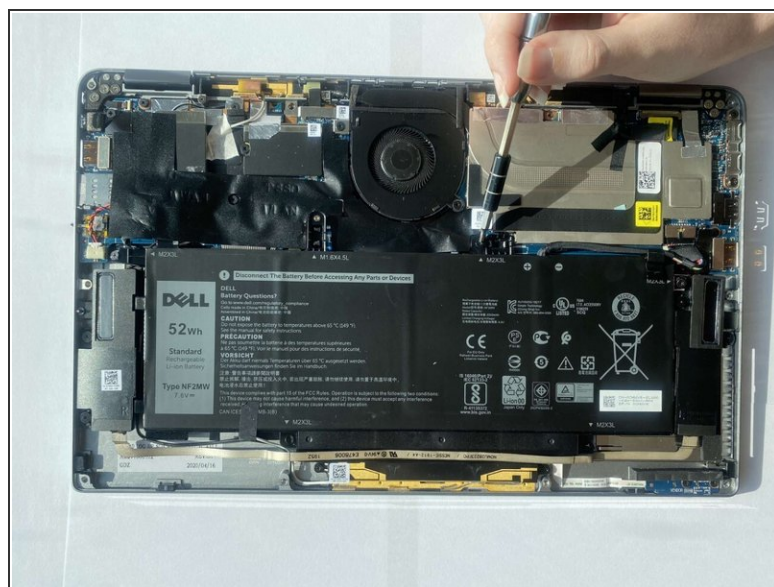
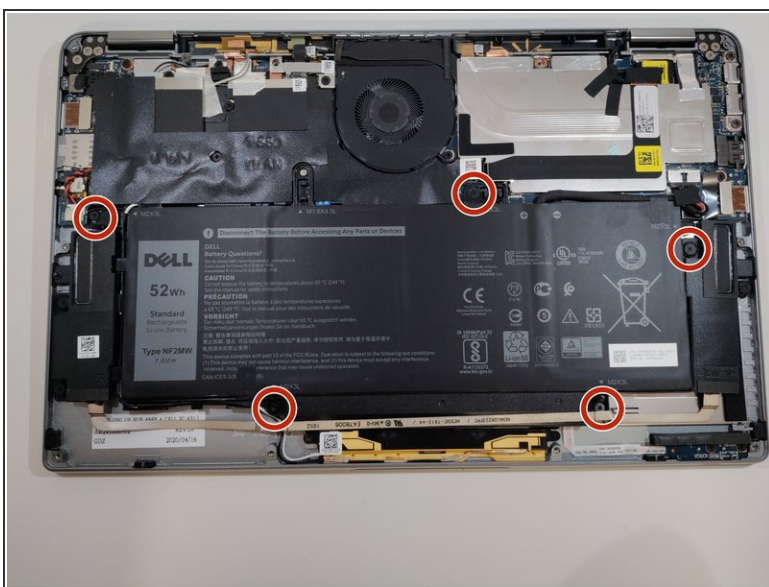
i The screws are permanently fastened to the base panel; do not attempt to remove them.

Step 3



- Carefully lift off the back panel.

Step 4 — Battery



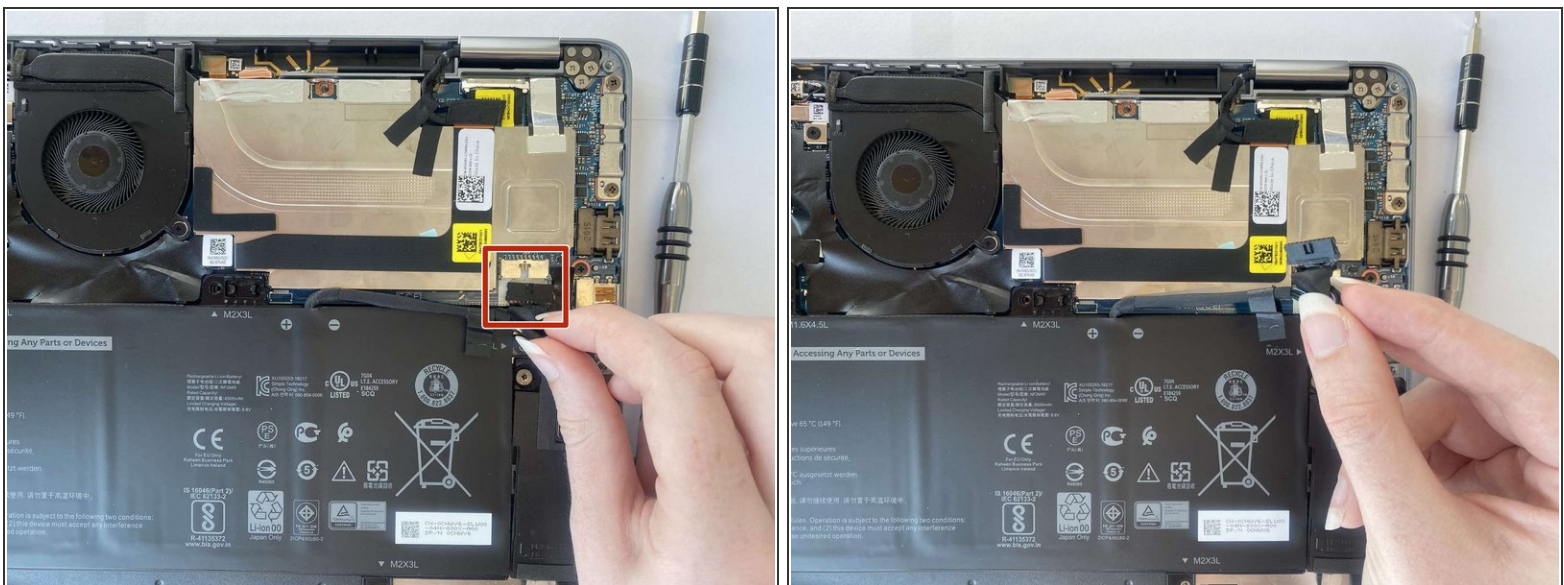
- Use a Philips #00 screwdriver to remove the five 3mm screws that secure the battery.

Step 5



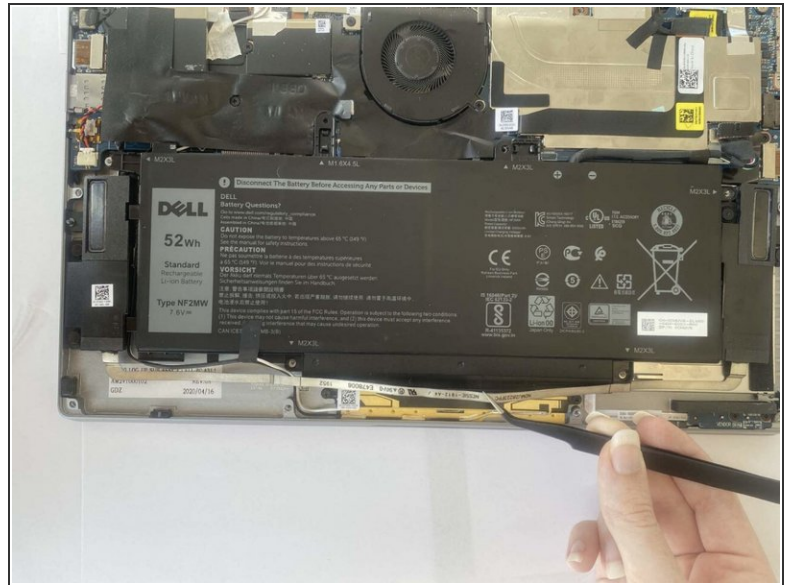
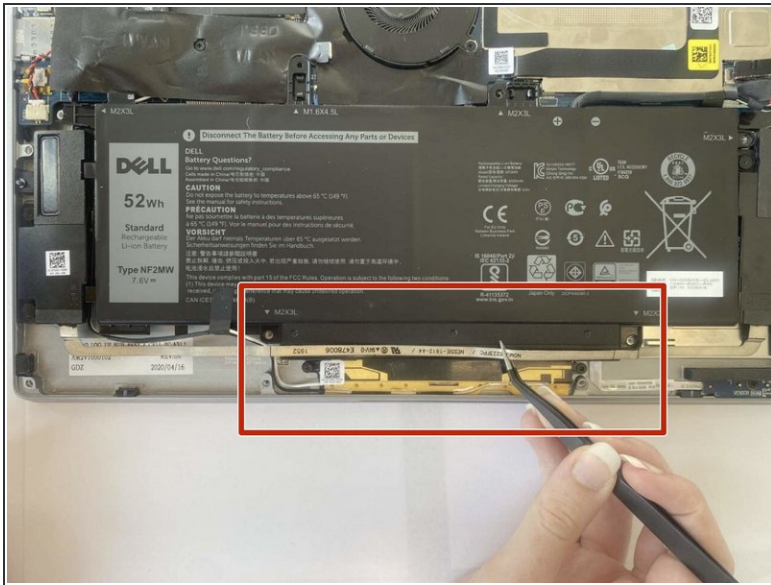
- Use a Philips #00 screwdriver to remove one 4.5 mm screw.

Step 6



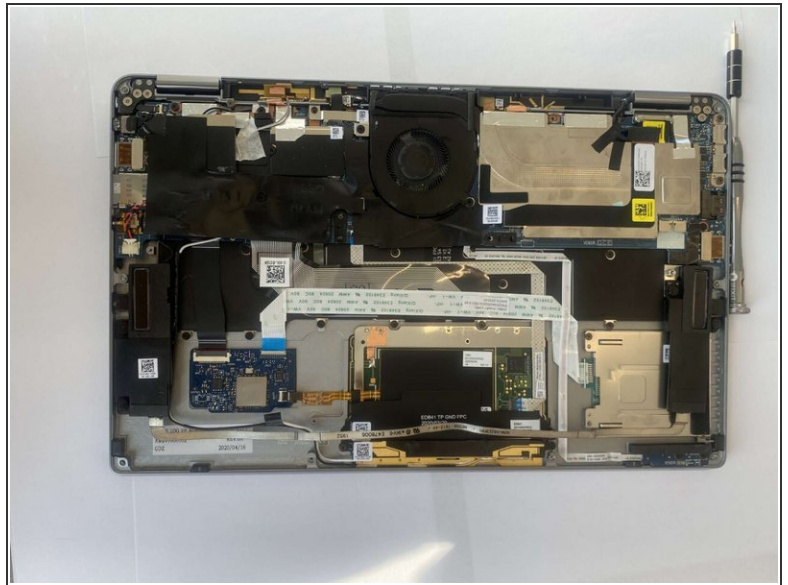
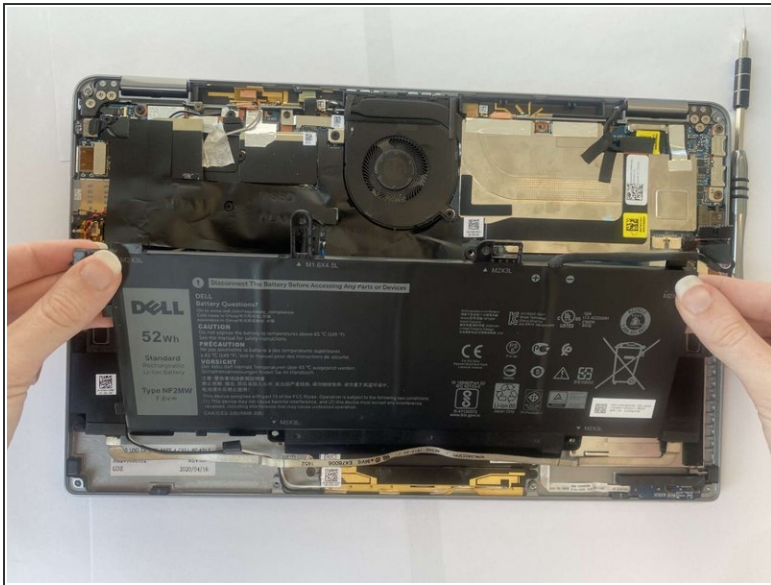
- Grip the battery cable near the plug and pull it straight out, in the direction of the cable.

Step 7



- Use tweezers to gently move the speaker ribbon cable away from the bottom of the battery.
- ⚠ The ribbon cable is thin and fragile; handle it carefully.
- ⓘ The ribbon cable only needs to be moved so that the battery can be removed; do not completely remove the ribbon cable.

Step 8



- Lift the battery out with two hands.

To reassemble your device, follow these instructions in reverse order.