



Written By: Michelle Reyes



INTRODUCTION

One of the common defects that Dell Inspiron 13 7378 is currently facing has been the complete shut off or pitch-black screen that pops out of nowhere. That may have a lot to do with the battery and could also potentially mean it's damaged.

Before following this guide make sure the device is powered off as this can be a dangerous hazard. You will then be able to safely replace your battery and return your computer back to its proper function.



TOOLS:

- [Phillips #00 Screwdriver](#) (1)
- [iFixit Opening Picks \(Set of 6\)](#) (1)



PARTS:

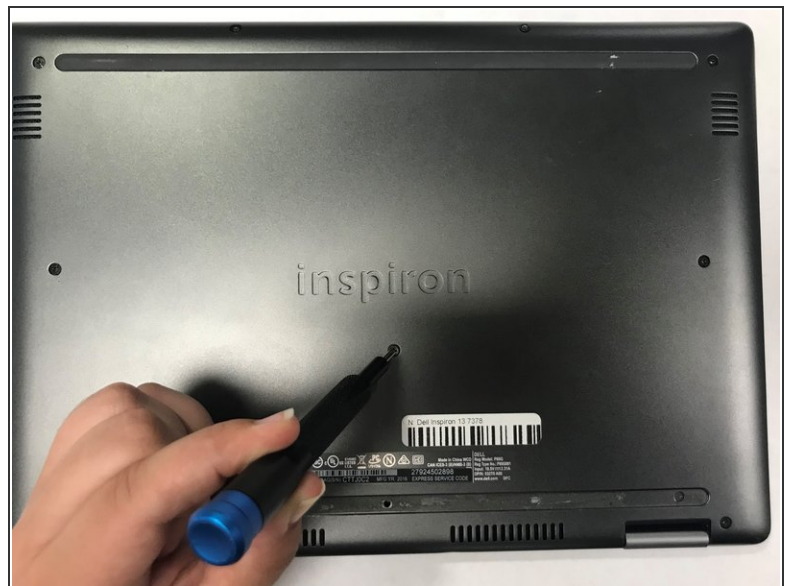
- [Dell WDX0R Replacement Battery](#) (1)

Step 1 — Back Cover



- Set the laptop with its underside facing up for improved accessibility.

Step 2



- Using a Phillips #00 screwdriver, extract the nine 3 mm screws located on the back of the laptop.

Step 3



- Carefully pry open the back of the back of the laptop using opening picks.
- Carefully raise and detach the back cover from the laptop.

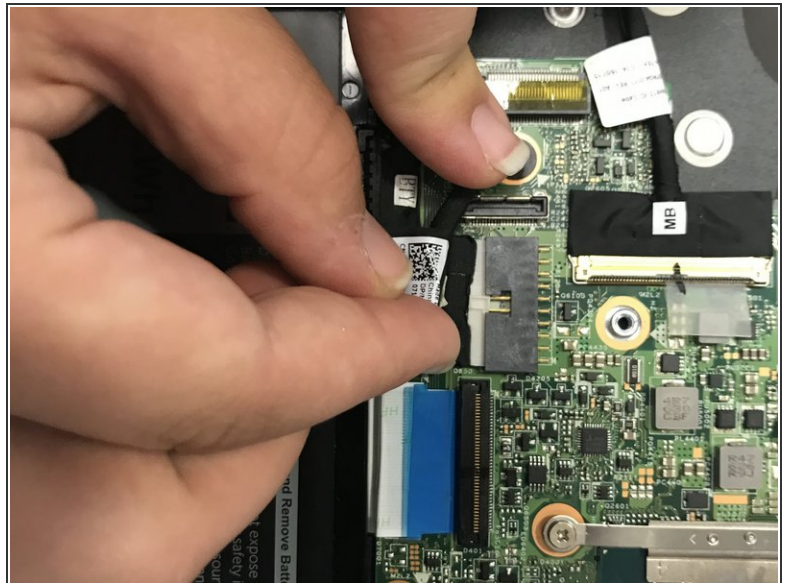
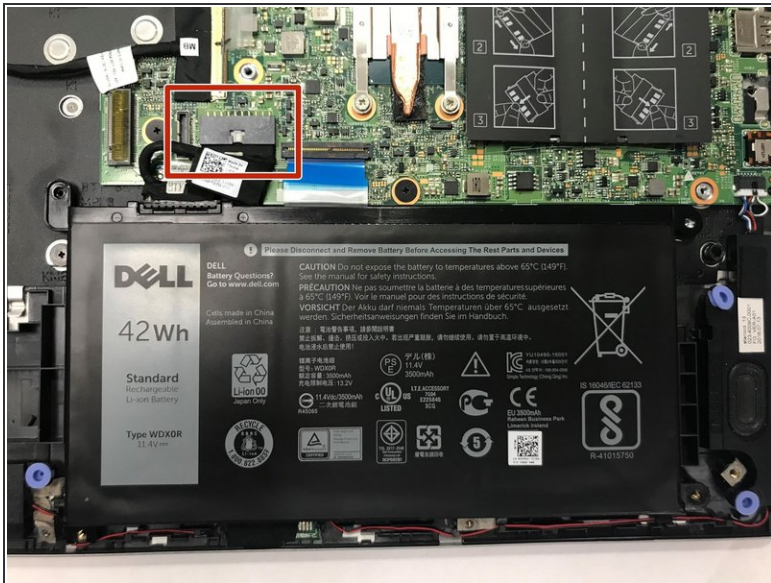
⚠ Exercise caution to prevent damaging or cracking the device's back cover.

Step 4 — Battery



- Remove the four screws from the battery using a Phillips #00 screwdriver.

Step 5



- Disconnect the battery's black connector from the motherboard.

Step 6



- Remove the battery from the laptop.

Replace the back cover to complete the process.

This document was generated on 2023-04-29 02:03:31 PM (MST).