



Dell Latitude 7390 Fan Replacement

If you need to repair or replace the fan...

Written By: Glennjay Elayda



INTRODUCTION

If you need to repair or replace the fan component in the Dell Latitude 7390, this guide shows you step-by-step how to access it.

Prior to starting this repair, be sure to turn off your laptop and unplug from the power adapter.



TOOLS:

[Phillips #1 Screwdriver](#) (1)
[iFixit Opening Tool](#) (1)
[iFixit Opening Picks \(Set of 6\)](#) (1)
[Phillips #0 Screwdriver](#) (1)
[Tweezers](#) (1)



PARTS:

[Dell F3YGT Battery](#) (1)

Step 1 — Bottom Panel



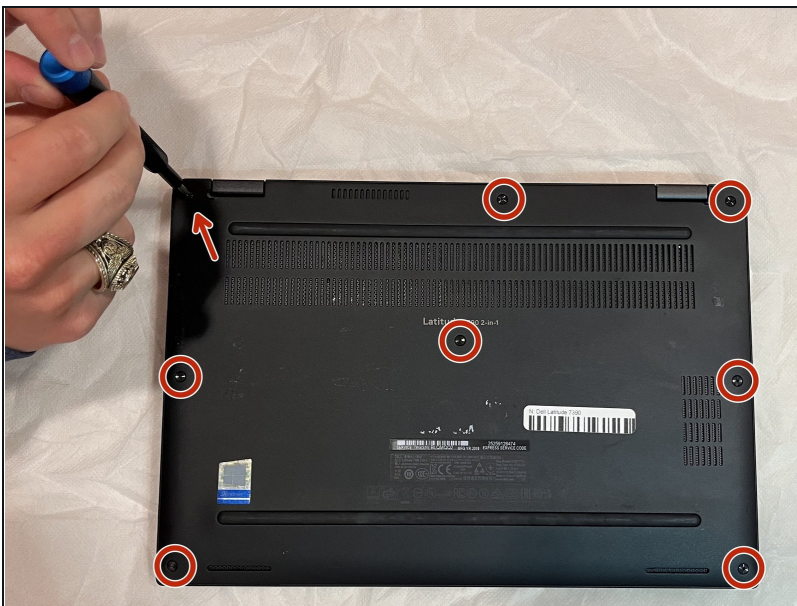
- Orient your Dell Latitude 7390 laptop so that it is facing towards you as if you're going to open it.

Step 2



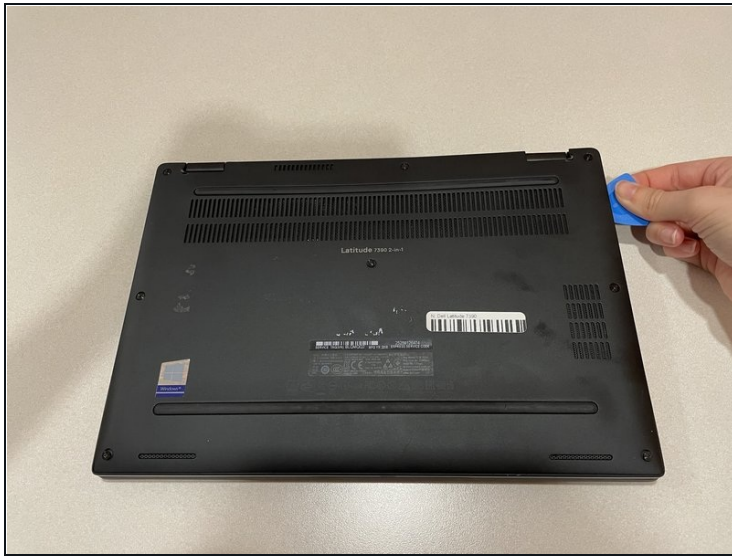
- Flip your laptop over so that the bottom is facing up.

Step 3



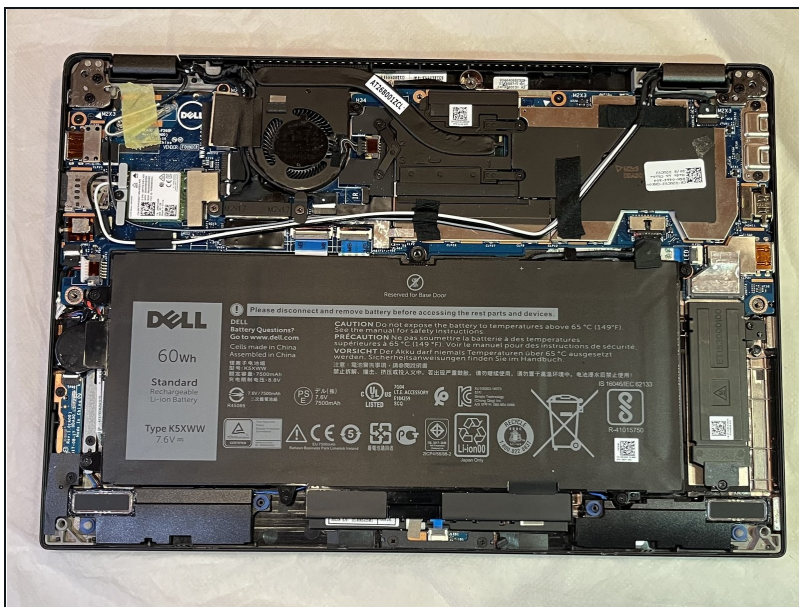
- Using your Phillips #1 screwdriver, remove the eight 6 mm screws around the border of the bottom panel.

Step 4



- Using an opening tool or picks, work your way around the periphery and pry the back case off.

Step 5



- Finally, lift the back panel off to uncover the inside of your Dell Latitude 7390.

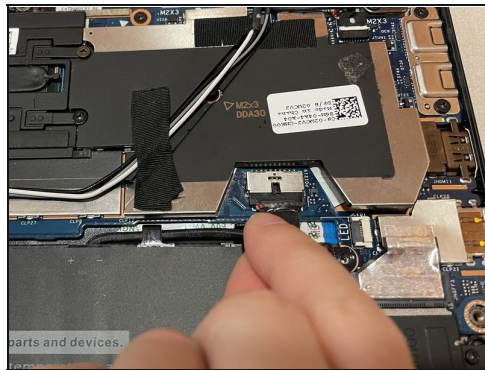
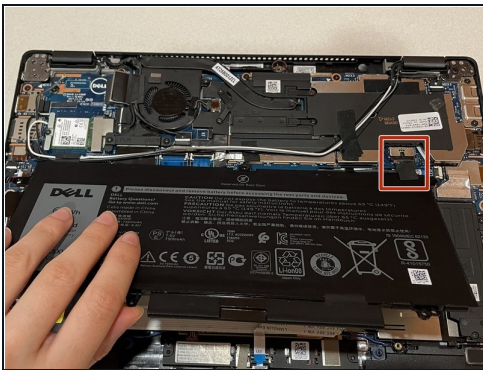
Step 6 — Battery



⚠ Make sure the laptop is turned OFF and unplugged from the power adapter before taking the battery out.

- Use the Phillips #1 screwdriver to remove the five 6 mm screws holding the battery in place along the edges of the battery.

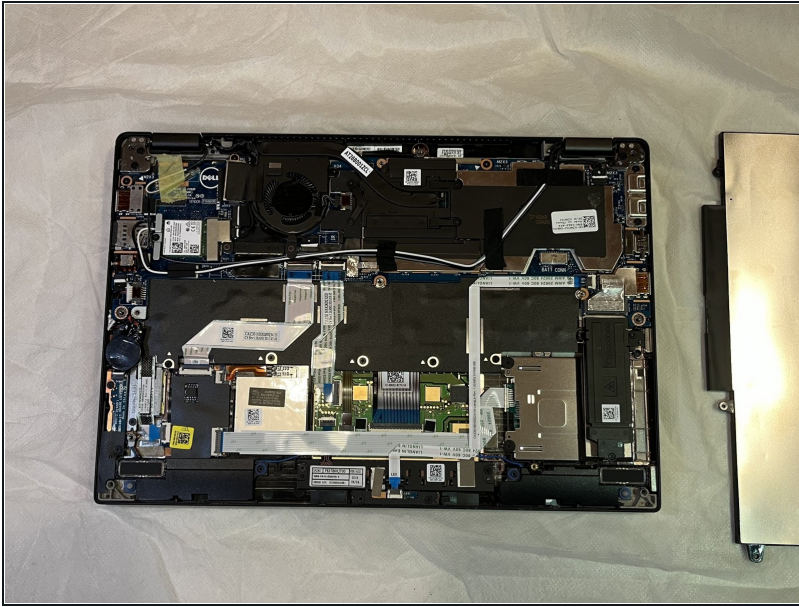
Step 7



⚠ Be careful not to break the connector by pulling too hard on the black tab.

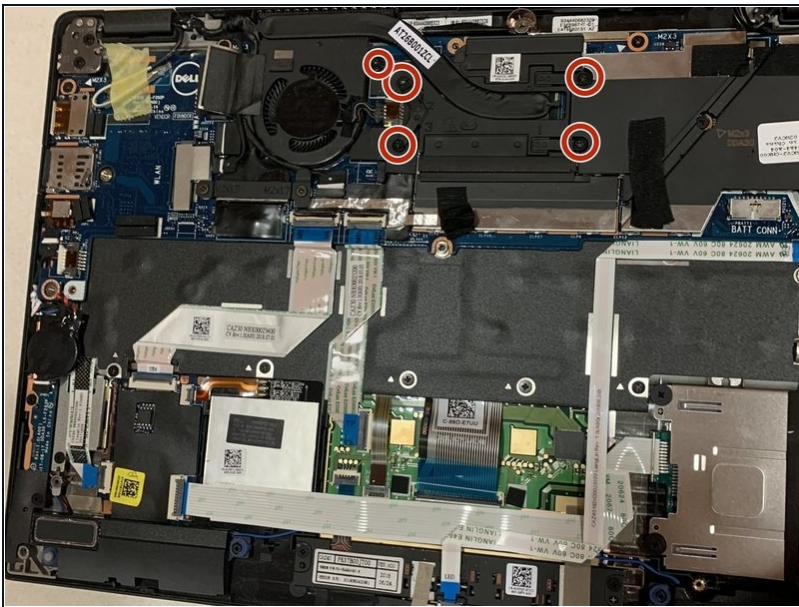
- Pull the black tab on the top of the connector to unplug the battery from the motherboard.

Step 8



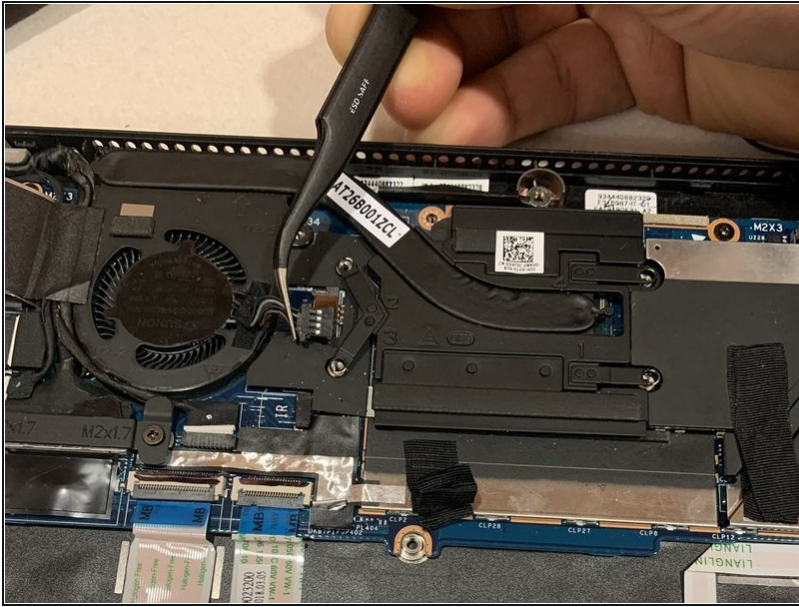
- Carefully lift the battery out of the laptop.

Step 9 — Fan



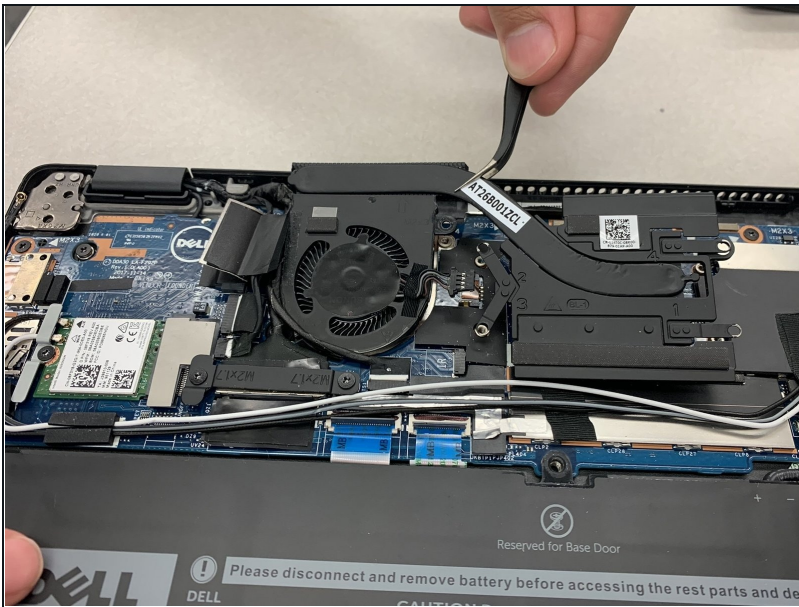
- Remove the five black screws holding the fan and heatsink in place using the Phillips #0 screwdriver.

Step 10



- Use [tweezers](#) or your fingers to disconnect the fan connector.

Step 11



- Remove the fan from the case.

To reassemble your device, follow these instructions in reverse order.