



Altec Lansing OVO Bluetooth Speaker

Disassembly

It's simple to disassemble this unit once you understand where to place the tools and where the screws are located.

Written By: Nuno



INTRODUCTION

This guide is a dissassembly of the Altec Lansing OVO Bluetooth Speaker.



TOOLS:

- [2.5 mm Hex Key](#) (1)
 - [1 x Opening Picks](#) (1)
-

Step 1 — Altec Lansing OVO Bluetooth Speaker Disassembly



- This is the unit that we are going to disassemble.

Step 2



- Screws approximate location behind the front cover.

Step 3



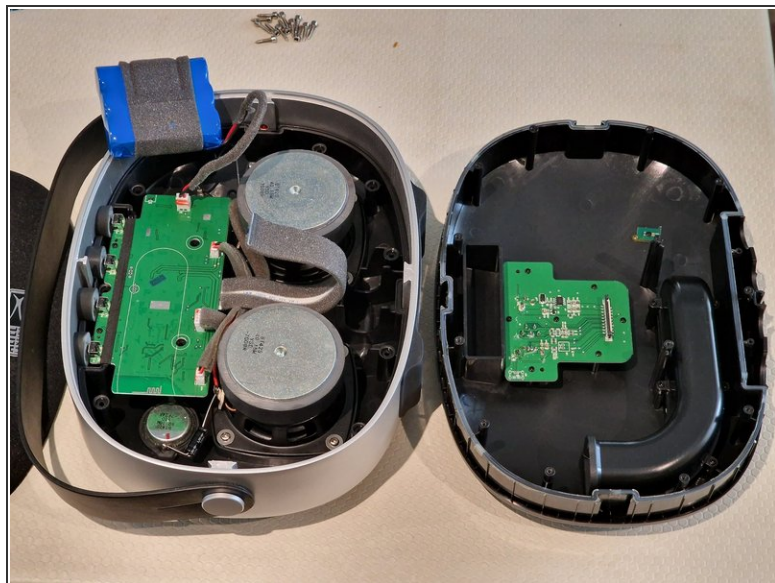
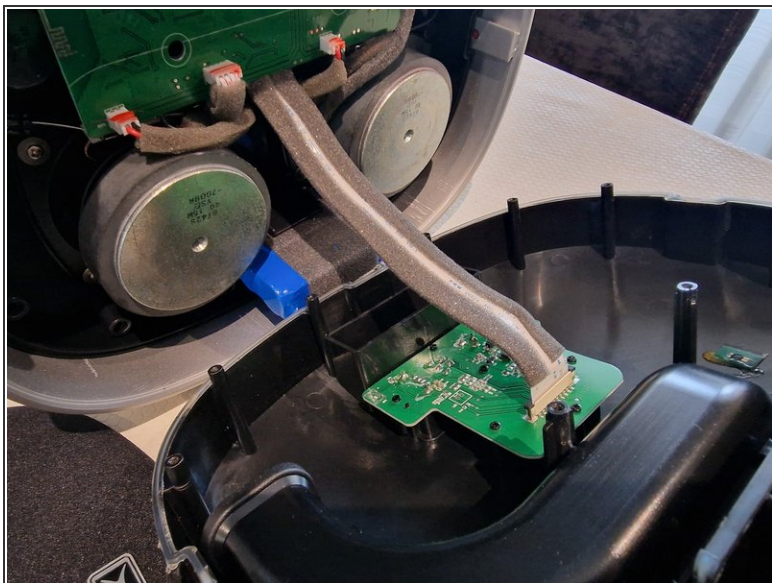
- Use a pick to gently pull the cover. There are no fragile parts. The cover is made of metal and covered with a type of mesh.

Step 4



- Once the front cover is removed gently lift the thin protection layer in order to find the holes where the screws are located. In order to find the two middle screws you will have to make two small incisions as shown in the picture.

Step 5



- After you remove the 13 screws, put your finger in the woofer hole on the back of the speaker. Pull gently outwards to make sure you don't break the flat cable that connects the back to the main board. And that's it! Now you have full access to all the inner parts of your speaker.

To reassemble your device, follow these instructions in reverse order.