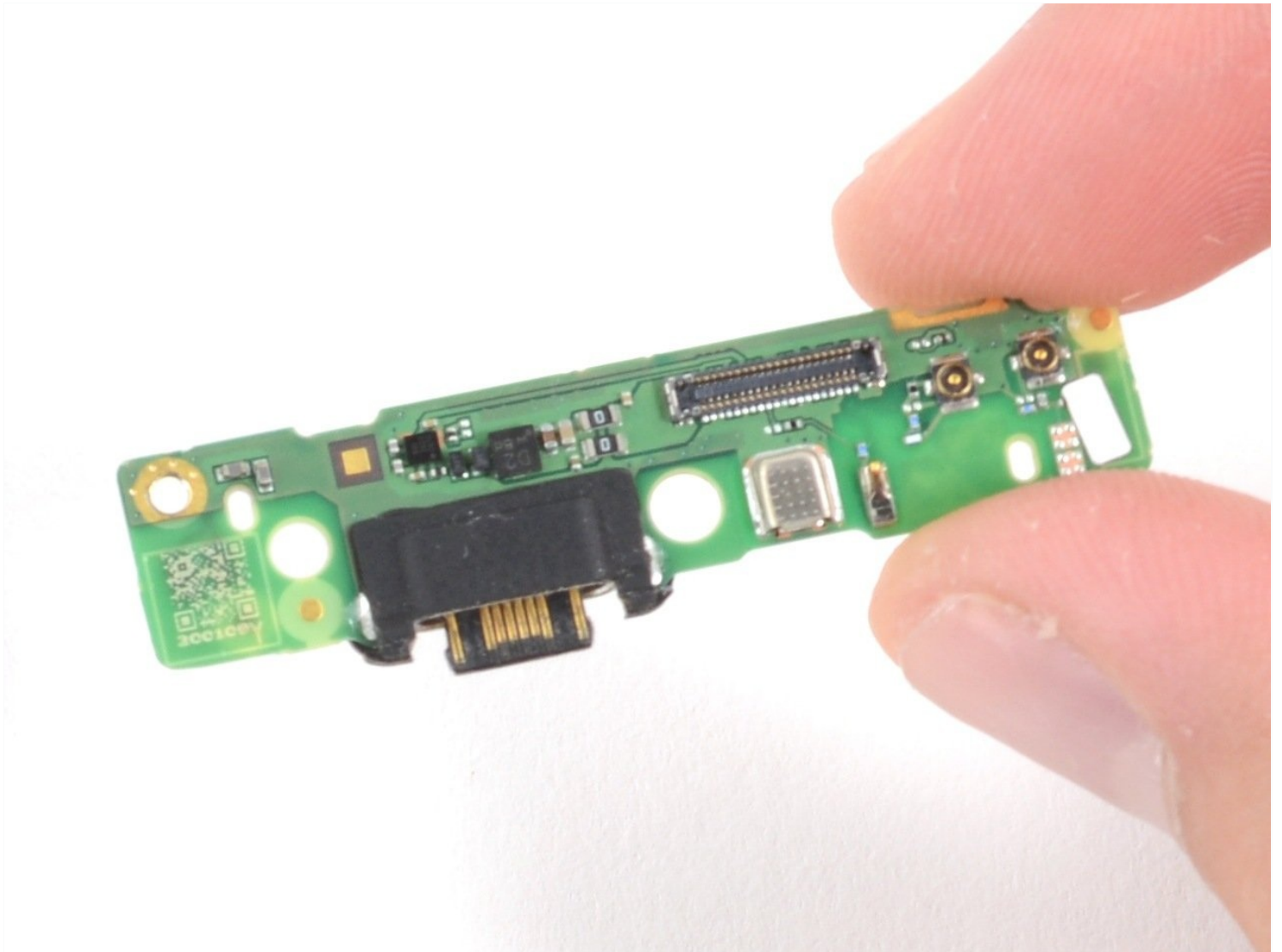




# Motorola Moto G7 Power Daughterboard Replacement

Use this guide to remove or replace the...

Written By: Clay Kim



# INTRODUCTION

Use this guide to remove or replace the daughterboard on your Motorola Moto G7 Power.

Before you begin, download the [Rescue and Smart Assistant](#) app to backup your device and diagnose whether your problem is software or hardware related.

**Some images may have visual discrepancies, such as the SIM card tray being removed from the phone. You don't need to remove the SIM card tray for this procedure.**

You'll need some double-sided tape ([such as Tesa tape](#)) in order to adhere the replaced components.

**For your safety, discharge the battery below 25% before disassembling your phone.** This reduces the risk of a dangerous thermal event if the battery is accidentally damaged during the repair. If your battery is swollen, [take appropriate precautions](#).

---

## TOOLS:

[iOpener](#) (1)

[Suction Handle](#) (1)

[iFixit Opening Picks \(Set of 6\)](#) (1)

[Tweezers](#) (1)

---

## Step 1 — Weaken the adhesive



- Apply a [heated iOpener](#) or a heat gun to the bottom edge of the screen for approximately two minutes to help soften the adhesive.
- ⓘ A hair dryer, heat gun, or hot plate may also be used, but be careful not to overheat the device—the display and internal battery are both susceptible to heat damage.

## Step 2 — Loosen the rear cover



- Apply a suction cup to the rear cover, as close to the heated edge as possible.
- Pull up on the suction cup with strong, steady force to create a gap.
  - ❗ Depending on the age of your device, this may be difficult. If you have trouble, apply more heat and try again.
- Insert an opening pick into the gap you created under the rear cover.

## Step 3



- Slide the pick along the bottom of the gap to slice through the adhesive securing the rear cover to the midframe.
  - ❗ After being cut, the adhesive will sometimes stick back together as it cools. To prevent this, you can leave the pick in this edge after cutting, and continue the next steps with a new pick. Repeat this with each edge, leaving a pick and continuing with a new one.

## Step 4



- Slide the pick along the gap on the same side of the phone as the SIM card tray to slice through the adhesive securing the rear cover to the midframe.

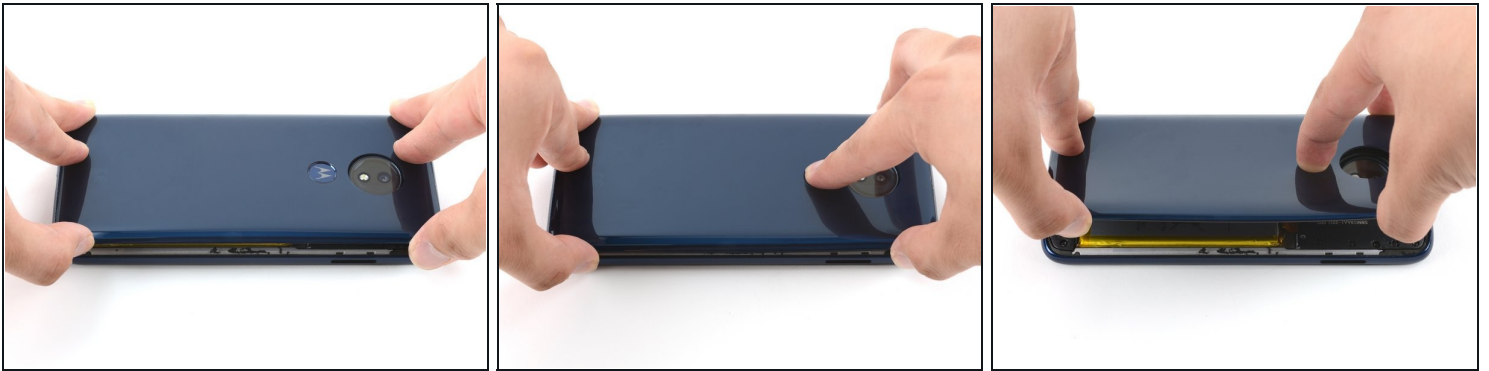
## Step 5



- Slide the pick along the gap at the top of the phone to slice through the adhesive securing the rear cover to the midframe.



## Step 6



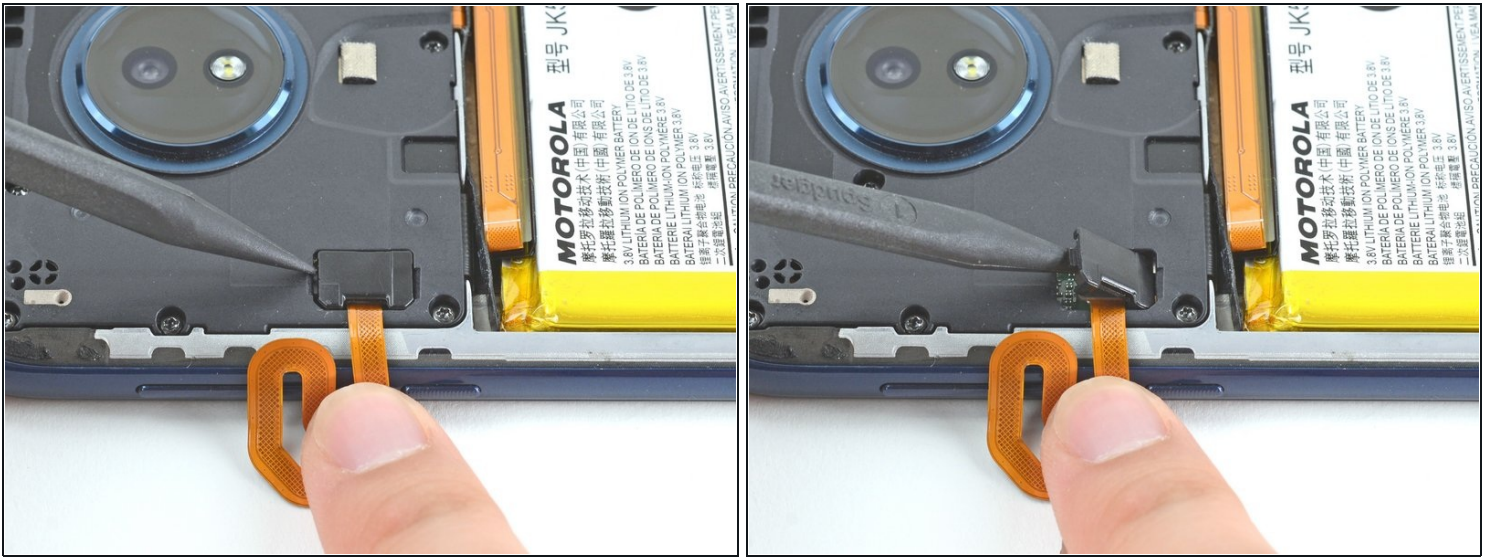
- Slightly lift up the rear cover starting from the right side.
- This will prevent damage to the fingerprint sensor connector under the left side of the rear cover.
- ❗ If lifting the rear cover is difficult, slice through any remaining adhesive with an opening pick. Reapplying the iOpener can also help weaken the adhesive.
- Use a finger to press down on the fingerprint sensor until it separates from the rear cover.

## Step 7 — Remove the rear cover



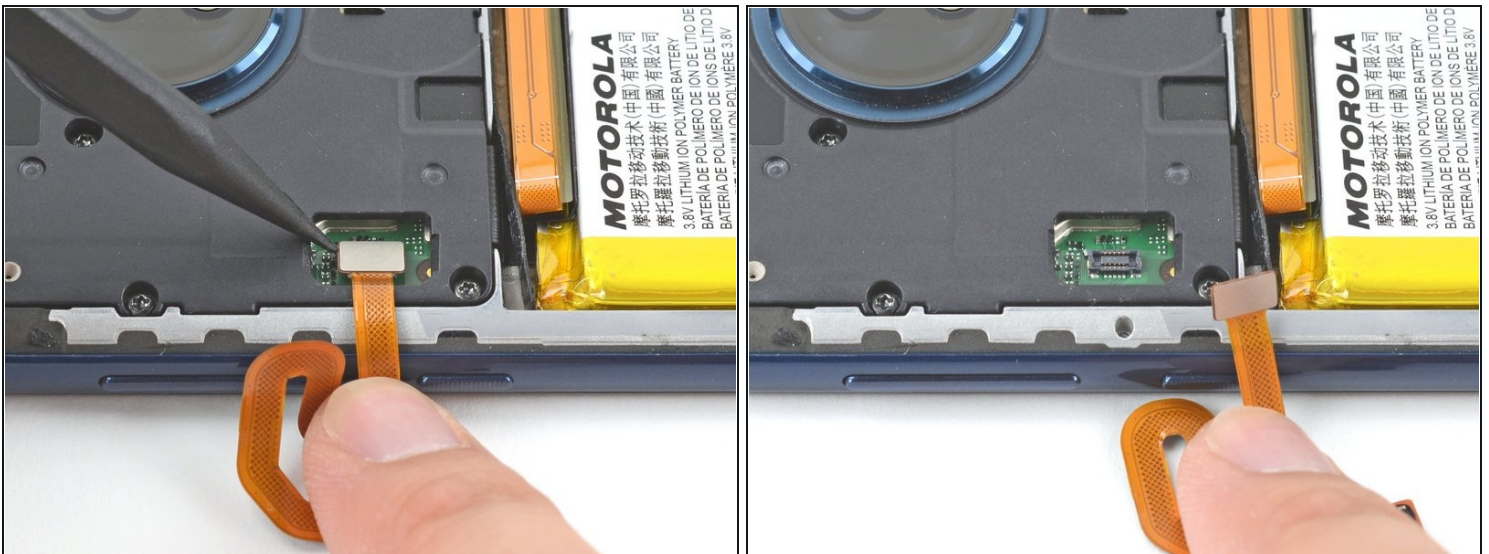
- Remove the rear cover, taking care not to damage the fingerprint sensor.
- ★ During reassembly, [follow this guide](#) to install custom-cut adhesives for your device.

## Step 8 — Remove the fingerprint sensor



- Insert the pointed end of a spudger into the divot at the top of the fingerprint sensor connector cover.
- Gently pry the cover open.
- Remove the cover.

## Step 9



- Use the pointed end of a spudger to pry up on the fingerprint sensor connector to disconnect it.

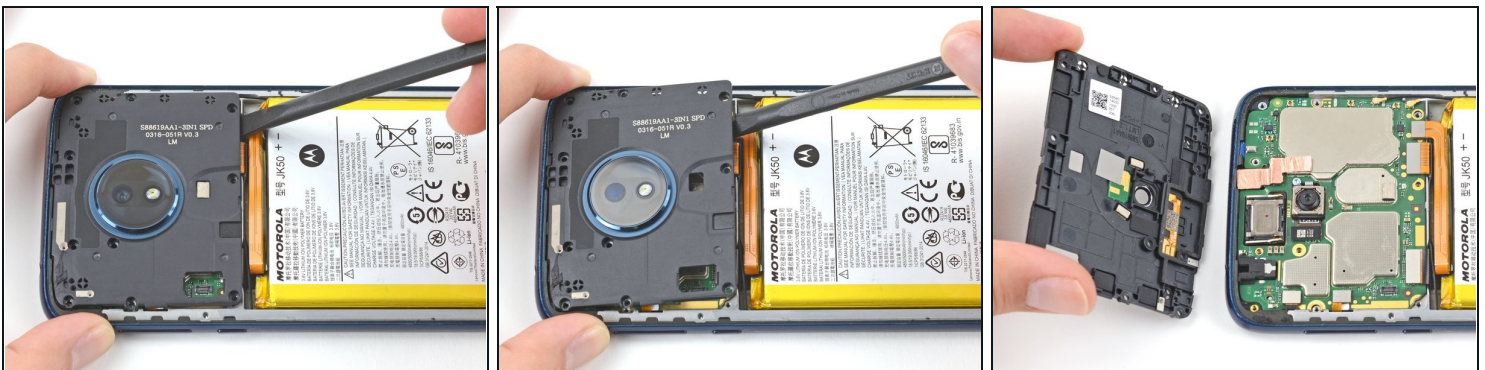


## Step 10 — Remove the motherboard cover



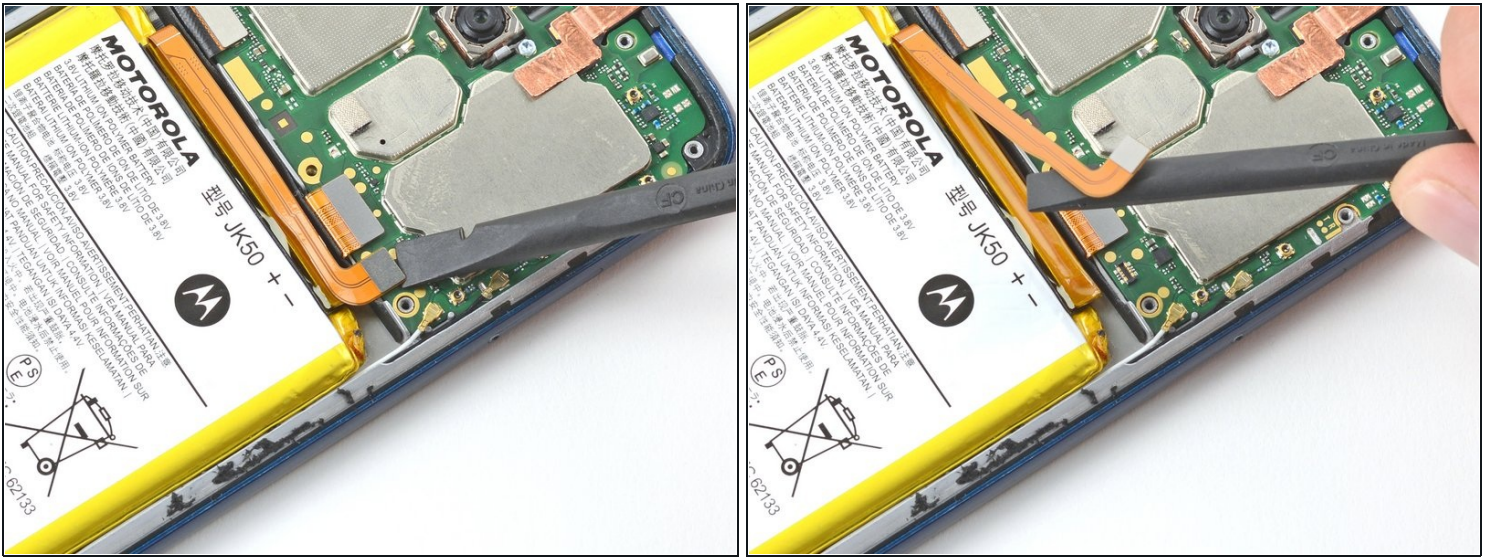
- Use a T5 Torx screwdriver to remove the ten screws securing the motherboard cover to the midframe:
  - Nine 3.5 mm screws
  - One 3.0 mm screw

## Step 11



- Insert the flat end of a spudger under the motherboard cover.
- Pry the motherboard cover upwards to lift it from the motherboard.
- Remove the motherboard cover.

## Step 12 — Disconnect the battery



- Use the flat end of a spudger to pry up on the battery connector to disconnect it.

## Step 13 — Remove the daughterboard cover



- Use a T5 Torx screwdriver to remove the four 2.5 mm screws securing the daughterboard cover to the midframe.



## Step 14



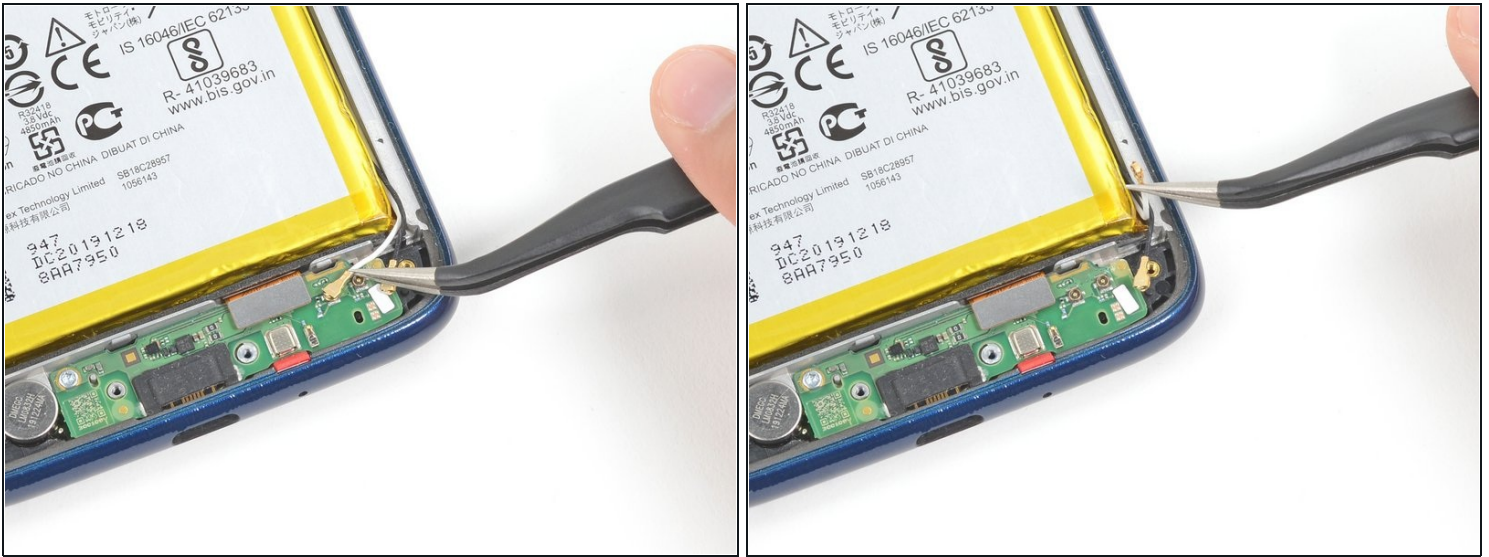
- Insert the flat end of a spudger under the daughterboard cover and pry upwards.
- Remove the daughterboard cover.

## Step 15 — Disconnect the antenna cables



- ① Follow [this guide](#) for in-depth instructions on how to disconnect a coaxial connector.
- Slide one of the tweezer's tips under the black wire until it's snug against the connector, and pry straight up from the board.
- ☑ To reinstall, hold the connectors in place and gently press them straight down. The connectors “snap” into their sockets much like the metal snaps on a jacket.

## Step 16



- Slide one of the tweezer's tips under the white wire until it's snug against the connector, and pry straight up from the board.

## Step 17 — Disconnect the interconnector



- Use the flat end of a spudger to pry up on the interconnect cable connector to disconnect it.



## Step 18



- Use a T5 Torx screwdriver to remove the 3 mm screw securing the daughterboard to the midframe.

## Step 19



- Insert the pointed end of a spudger under the right side of the daughterboard to lift it from the midframe.
- Remove the daughterboard.



---

**To reassemble your device, follow these instructions in reverse order.**

Take your e-waste to an [R2 or e-Stewards certified recycler](#).

Repair didn't go as planned? Try some [basic troubleshooting](#), or ask our [Motorola Moto G7 Power Answers community](#) for help.

Compare your new replacement part to the original part—you may need to transfer remaining components or remove adhesive backings from the new part before you install it.