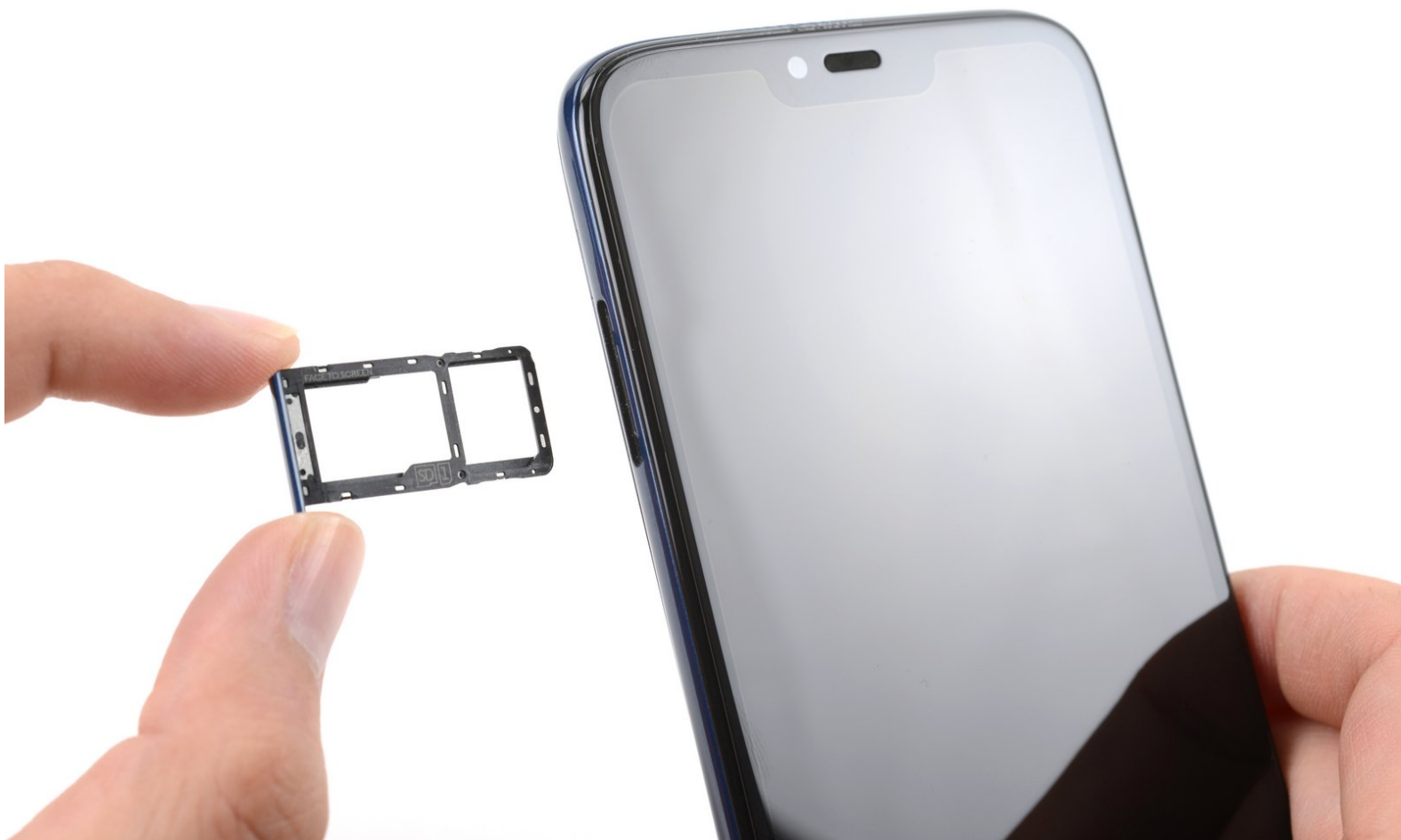




Motorola Moto G7 Power SIM Card Tray Replacement

How to replace or remove the SIM card tray on a Motorola Moto G7 Power.

Written By: Clay Kim



INTRODUCTION

Use this guide to replace or remove the SIM card tray on your Motorola Moto G7 Power.



TOOLS:

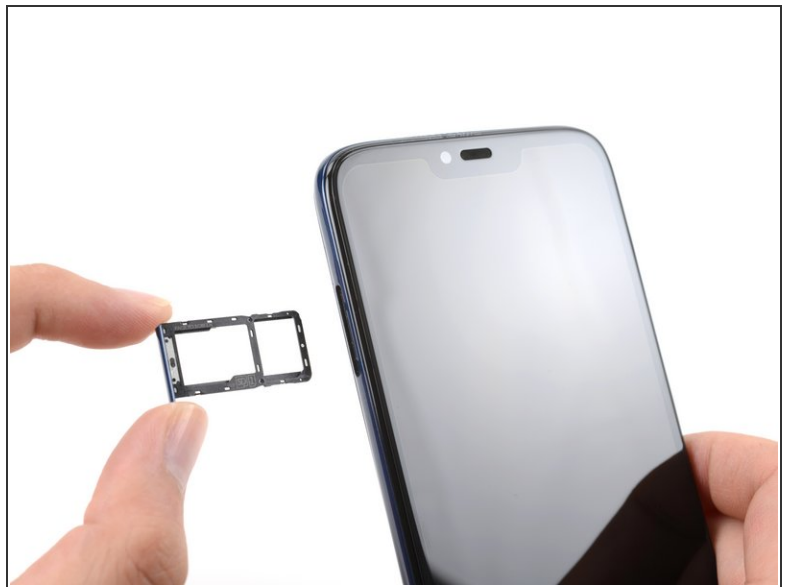
- [SIM Card Eject Tool](#) (1)
-

Step 1 — Eject the SIM card tray



- Insert a SIM card ejector tool into the small hole on the left side of the phone.
- Press gently until you feel the SIM card tray pop out slowly.

Step 2 — Remove the SIM card tray



- Remove the SIM card tray from the phone.
- ☑ When reinserting the SIM card tray, ensure that the hole is on the bottom side.

To reassemble your device, follow these instructions in reverse order.

Take your e-waste to an [R2 or e-Stewards certified recycler](#).

Repair didn't go as planned? Try some [basic troubleshooting](#), or ask our [Motorola Moto G7 Power Answers community](#) for help.