



# Huawei Watch 3 Motherboard Replacement

Use this guide to replace a damaged motherboard...

Written By: Tobias Isakeit



## INTRODUCTION

Use this guide to replace a damaged motherboard on your Huawei Watch 3.

The removal of the battery is optional and can be skipped (steps 13 and 14). Do not reinstall a damaged or deformed battery, as doing so is a potential safety hazard.

You may need replacement adhesive to reattach components when reassembling the device.



### TOOLS:

- [T30 Torx Driver](#) (1)
- [Phillips PH000 Screwdriver](#) (1)
- [Jimmy](#) (1)
- [iFixit Opening Picks \(Set of 6\)](#) (1)
- [Spudger](#) (1)
- [Tweezers](#) (1)



### PARTS:

- [Precut Adhesive Card](#) (1)
- Optional*

## Step 1 — Remove both wrist bands



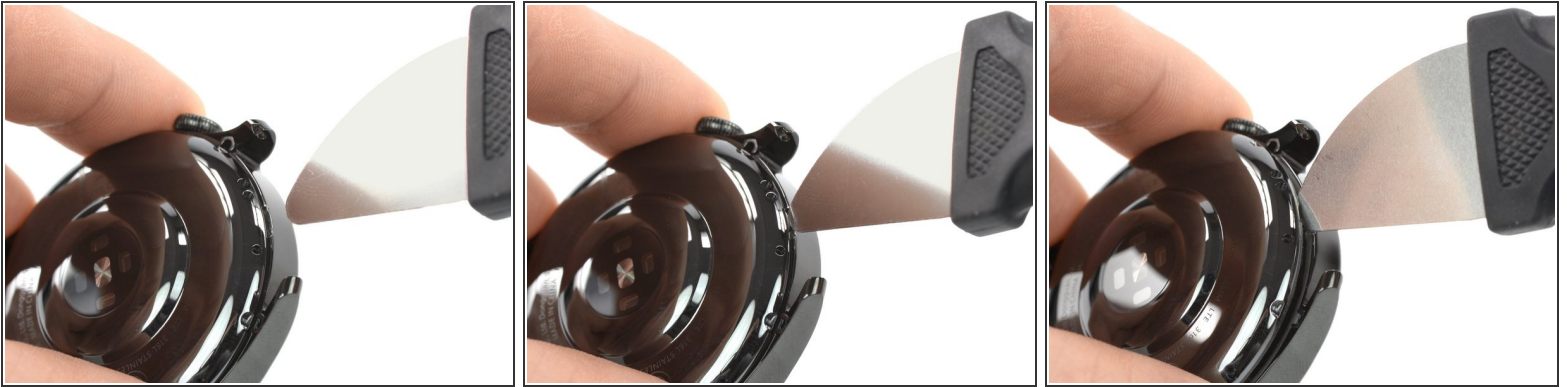
- Use your fingernail to pull the small metal pin on each wrist band towards the inside. This unlocks the wrist bands from the body of the watch.
- Remove the wrist bands.

## Step 2 — Remove the four Torx screws



- Use a Torx T3 screwdriver to remove the four 4 mm-long screws on the back of the Huawei Watch 3.

### Step 3 — Pry the back cover open

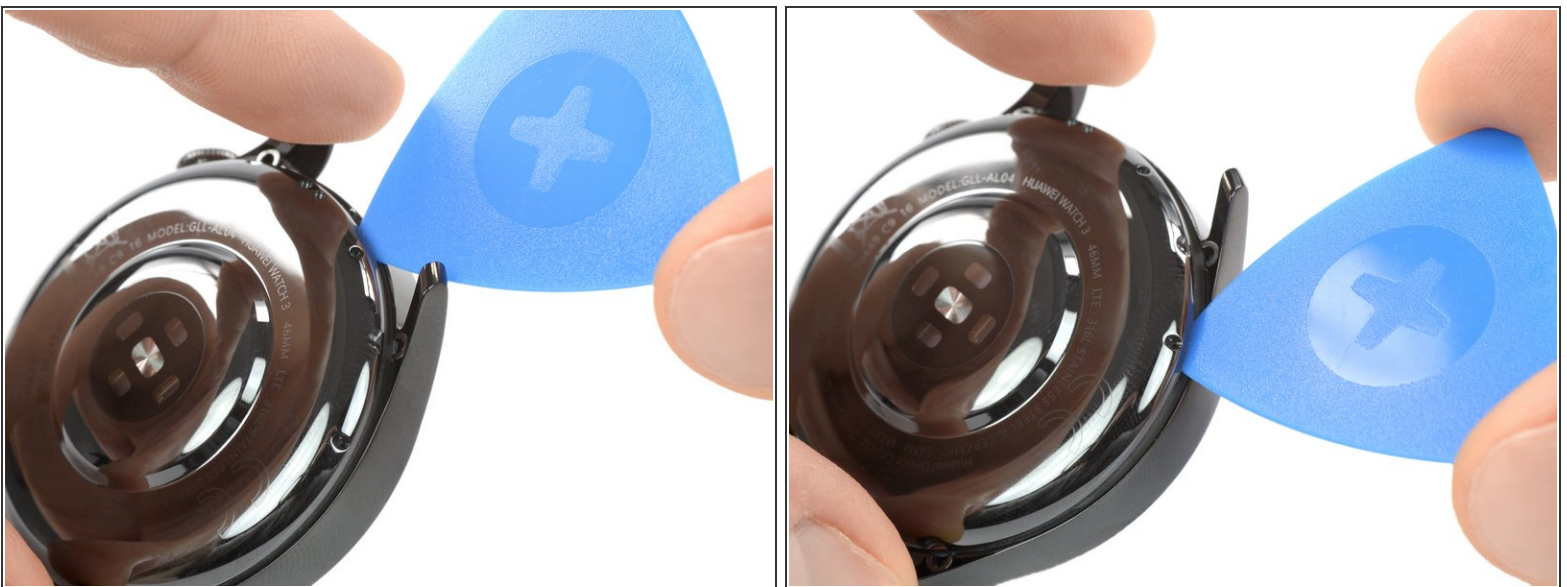


- Locate the small notch at the top of the back cover.
- Use a Jimmy to pry open the back cover by twisting it.

⚠ Using a sharp metal tool might cause cosmetic damage to the watch case. Covering the tool with a nitril glove can minimize the damage.

⚠ Don't remove the back cover just yet. It is still connected to the motherboard with a flex cable.

### Step 4 — Loosen the back cover gasket



- Insert the tip of an opening pick between the back cover and the case.
- Slide the opening pick around the back cover to loosen the gasket from the back cover.



## Step 5 — Lift the back cover



**⚠** There is a ribbon cable running from the back cover to the motherboard.

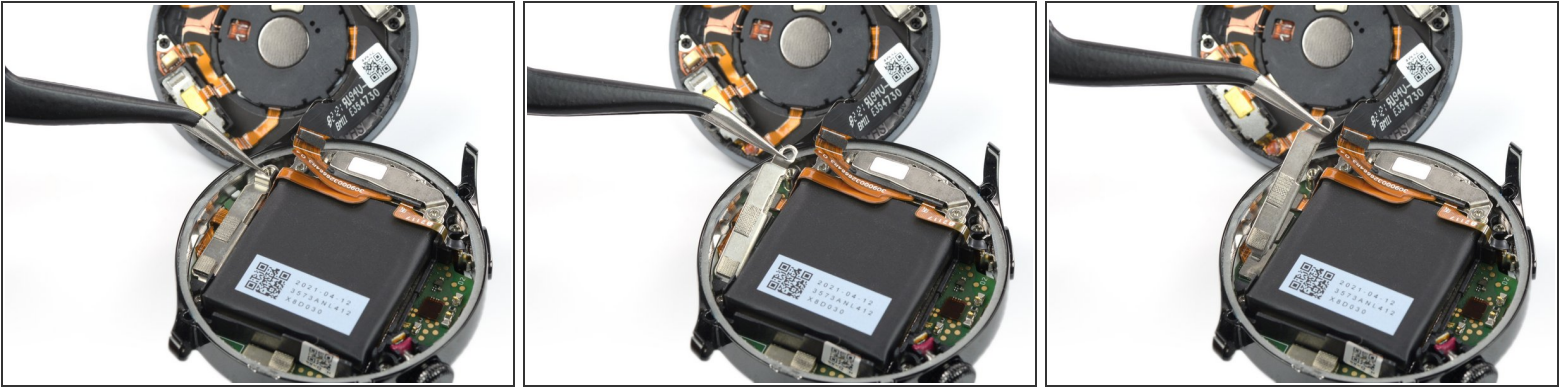
- Use an opening pick or your fingers to carefully lift the back cover open.
- Flip the back cover open away from the crown.
- ⓘ You can prop up the back cover to minimize the stress on the ribbon cable.

## Step 6 — Remove the battery bracket screw



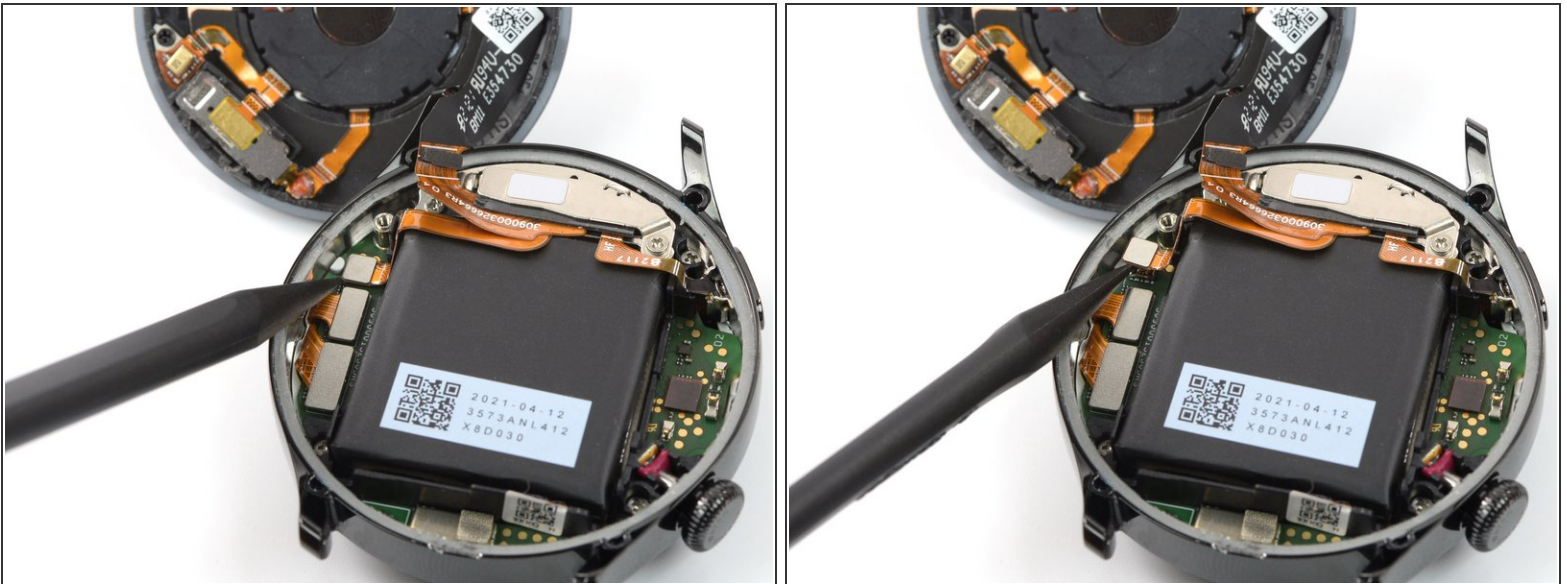
- Use a Phillips screwdriver to remove the 2.9 mm-long screw from the battery bracket.

## Step 7 — Remove the battery bracket



- Use a pair of tweezers to lift the top of the battery bracket free from its screw socket.
- Unhook the opposite side of the bracket and remove it.

## Step 8 — Unplug the battery connector



- Use the tip of a spudger to pry up and disconnect the battery connector.
- ❗ The battery connector is the smallest of the three connectors.

## Step 9 — Remove the sensor bracket screw



- Use a Phillips screwdriver to remove the 2.9 mm-long screw from the sensor bracket.

## Step 10 — Remove the sensor bracket



- Use a pair of tweezers to move the top of the sensor bracket free from a small latch near the case by rotating inwards.
- Unhook the opposite side of the bracket and remove it.

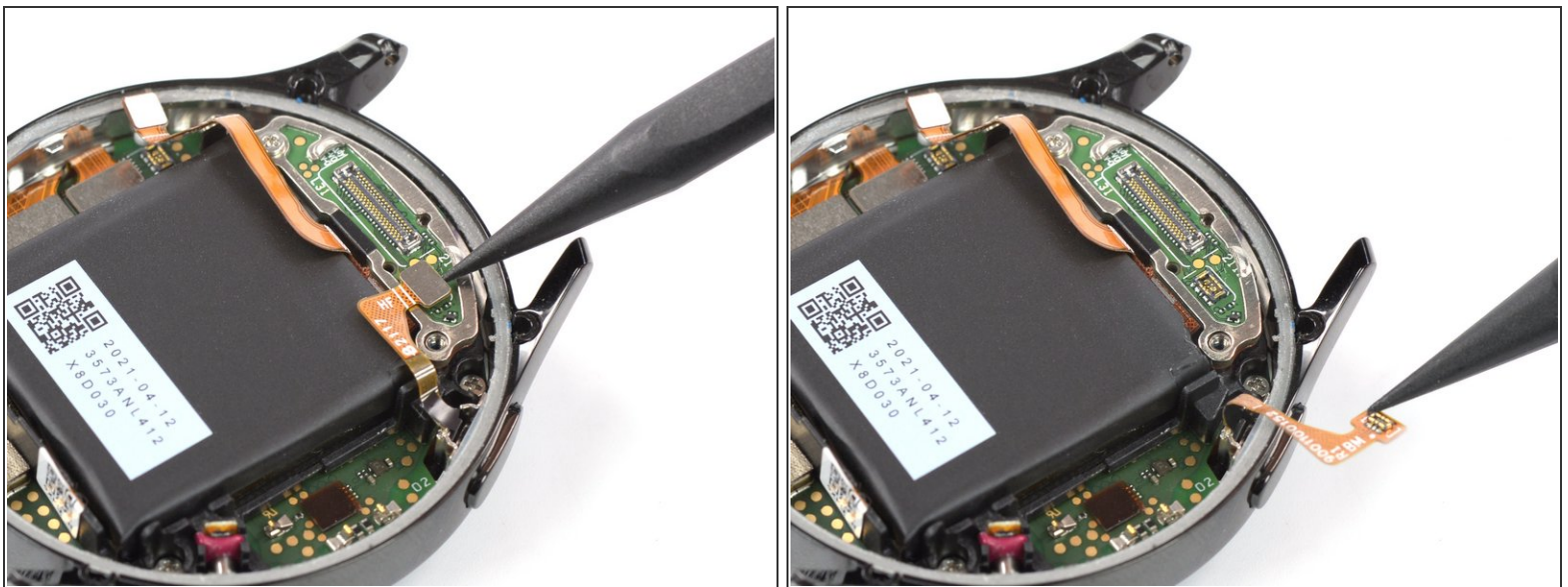


## Step 11 — Unplug the sensor connector



- Use the tip of a spudger to pry up and disconnect the sensor connector.
- Remove the back cover.

## Step 12 — Disconnect the home button



- Use the tip of a spudger to disconnect the home button cable.



## Step 13 — Lift the battery



- Insert the tip of an opening pick between the battery and the plastic frame opposite to the cables.
- Use the opening pick to lift the battery up.
- ❗ The battery is held down by mild adhesive.

## Step 14 — Remove the battery



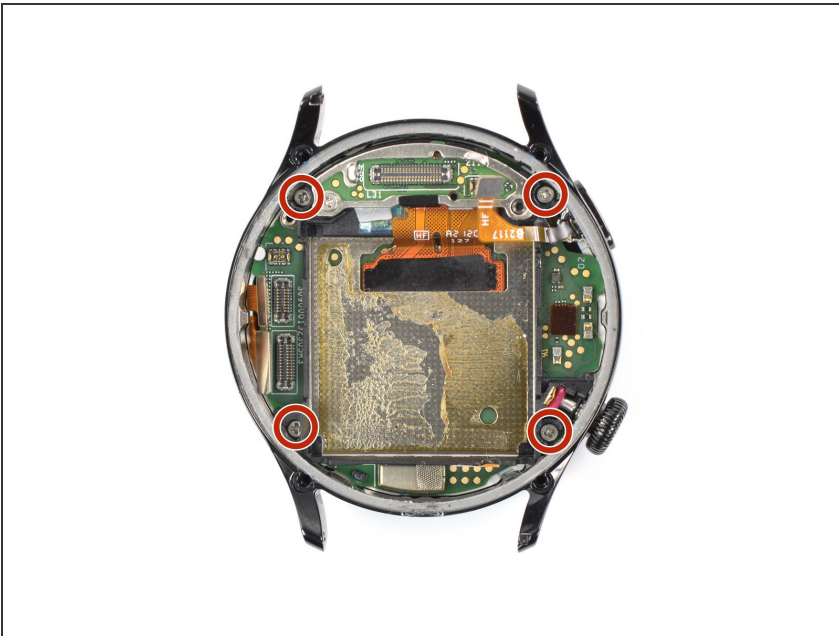
- Grab the battery with your fingers and remove it.
- ☑ For reassembly you may need to apply some adhesive to the new battery if it does not come equipped with it.

## Step 15 — Disconnect the display cables



- Use the tip of a spudger to pry up and disconnect both display cables.

## Step 16 — Remove the four motherboard screws



- Use a Phillips screwdriver to remove the four 2.9 mm-long screws securing the motherboard.

## Step 17 — Remove the motherboard



- Grab the motherboard with your fingers and lift it out of the case.
- If you opted not to remove the battery, use the flat end of a spudger to lift the motherboard out of the case.

To reassemble your device, follow these instructions in reverse order. Apply new adhesive where necessary after cleaning the relevant areas with isopropyl alcohol (>90%).

Take your e-waste to an [R2 or e-Stewards certified recycler](#).

Repair didn't go as planned? Try some [basic troubleshooting](#), or ask our [Answers community](#) for help.