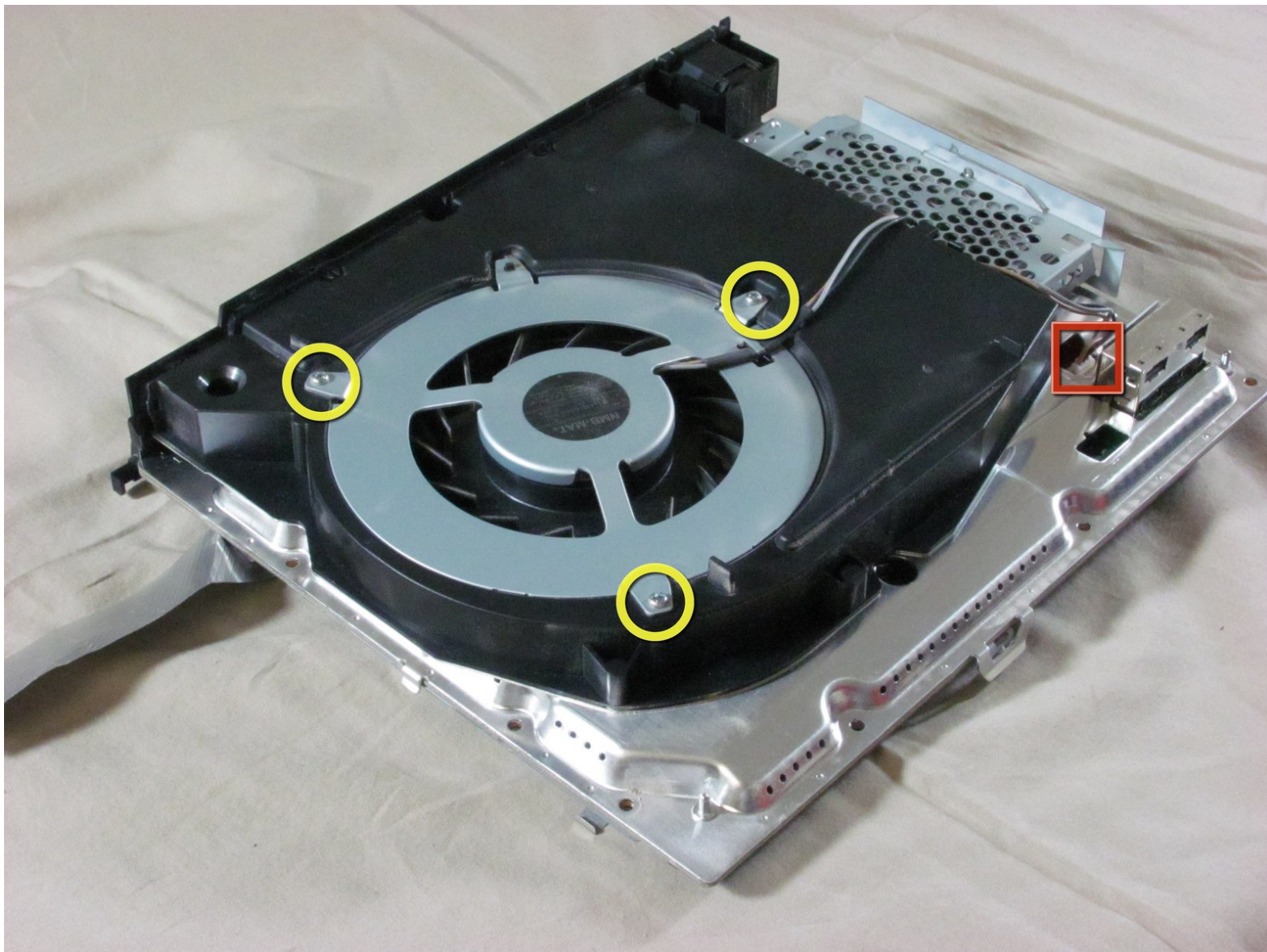




Playstation 3 Fan Replacement

Written By: iDeleted



INTRODUCTION

The whole Playstation 3 is cooled by a single fan on its bottom side. In this guide, we will remove that fan so that it may be cleaned or replaced.



TOOLS:

- [Phillips #00 Screwdriver](#) (1)
 - [Phillips #2 Screwdriver](#) (1)
 - [Spudger](#) (1)
 - [T10 Torx Screwdriver](#) (1)
-

Step 1 — Top Cover



- Remove the rubber screw cover near the hard drive cover with a spudger.

Step 2



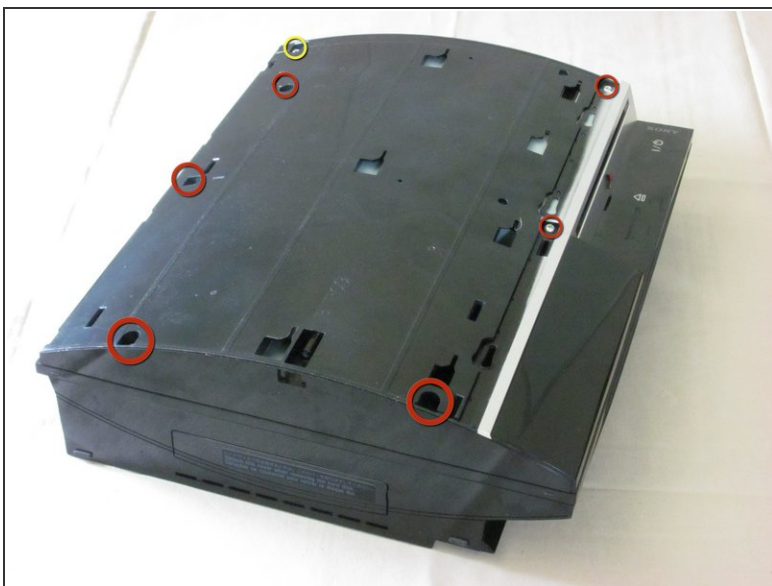
- Remove the screw holding the top cover in place with a Torx T10 screwdriver.

Step 3



- Slide the top cover down about half an inch.
- Lift the cover off of the PS3.

Step 4



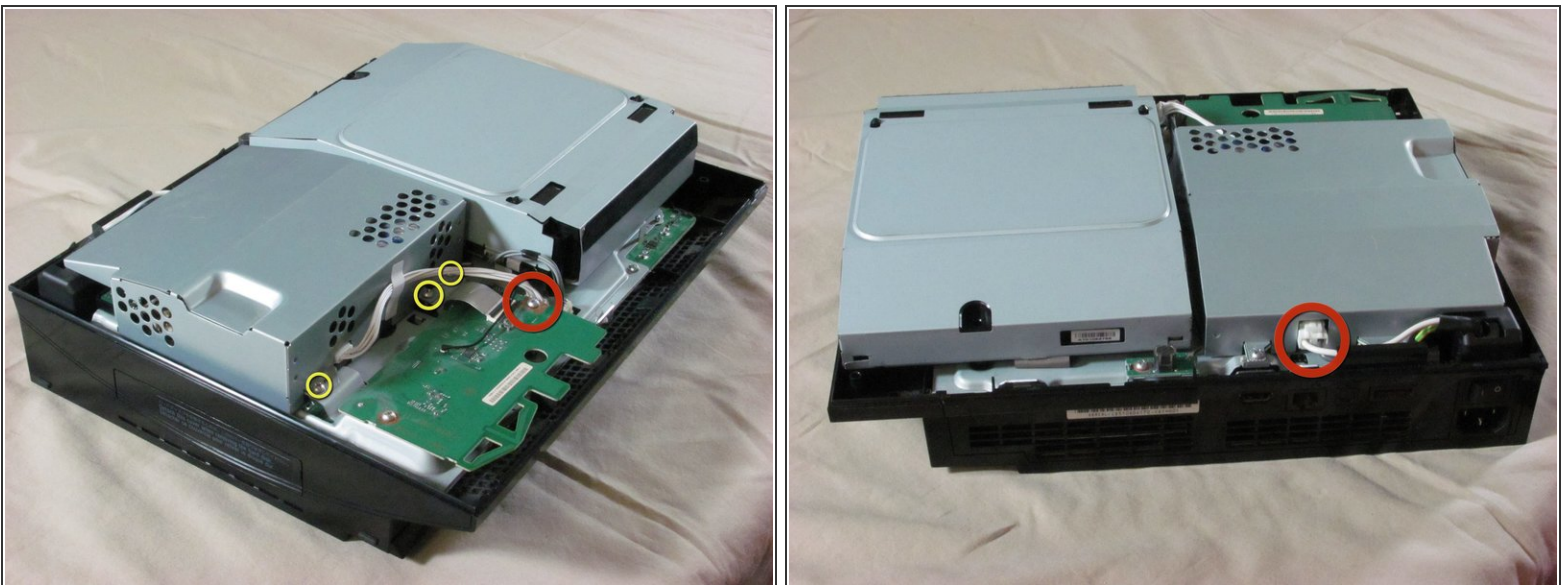
- Remove the seven screws in the top cover with a Phillips #2 screwdriver.
- ❗ One of the screws is shorter than the others. The short screw is marked in yellow.

Step 5



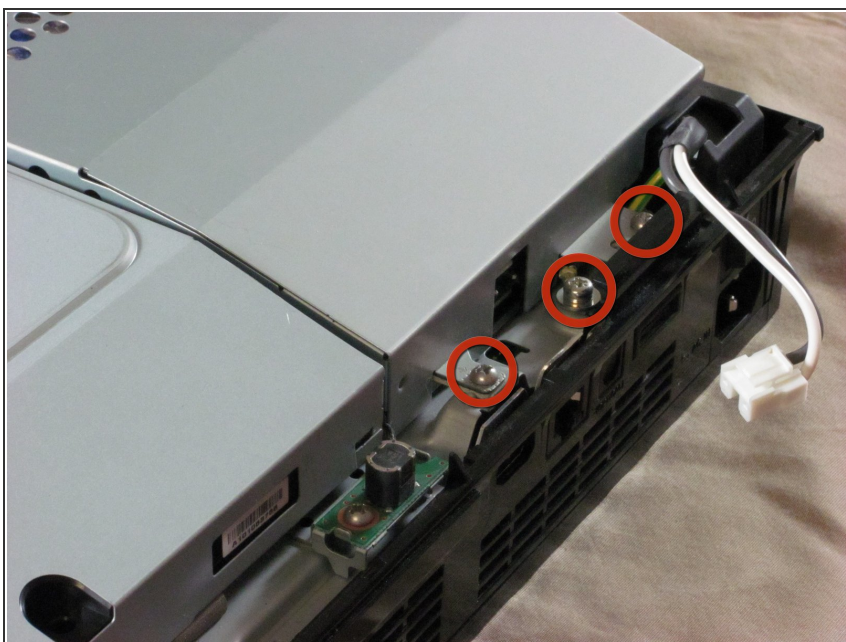
- You can now lift off the top cover.

Step 6 — Power Supply



- Unplug the white wires connected to the wireless board. There are two sets of wires: one set in the front, one in the back.
- ✦ Push down the tab on the connector to disconnect the wires.
- Remove the two screws on the front of the power supply.

Step 7



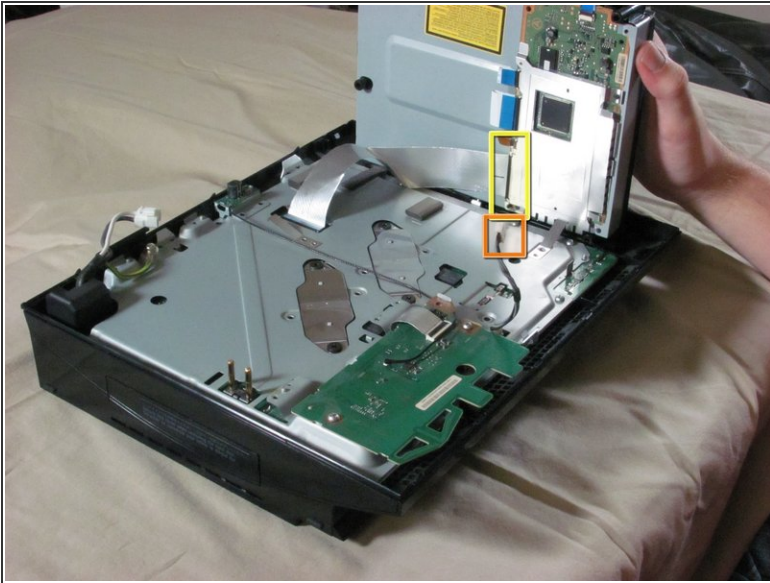
- Remove the screws on the back of the power supply with a Phillips #2 screwdriver.

Step 8



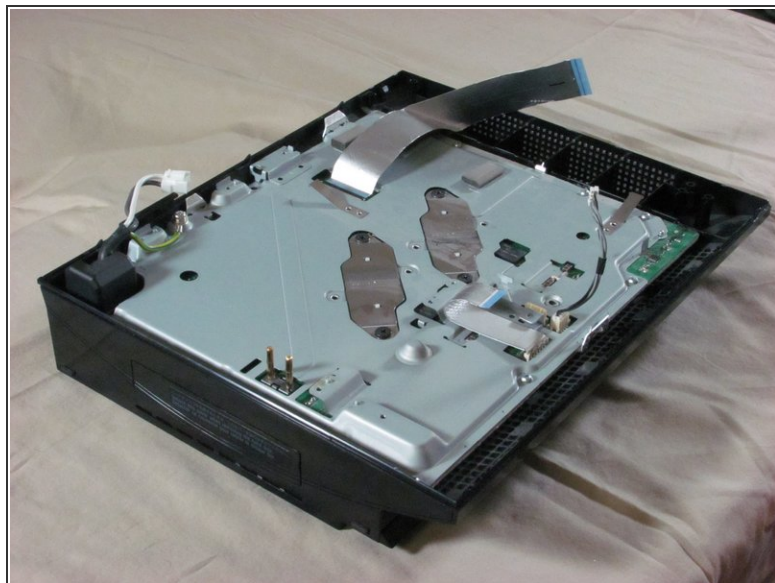
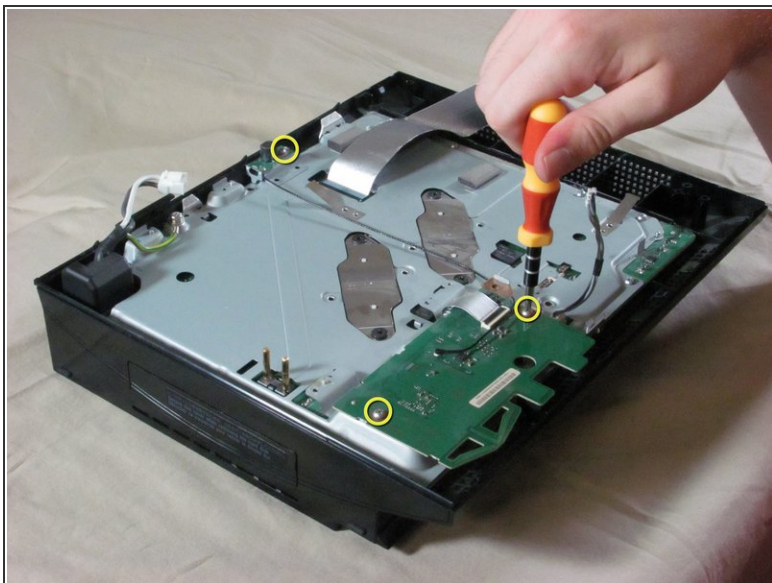
- Remove the power supply by lifting it straight up.

Step 9 — Motherboard Enclosure



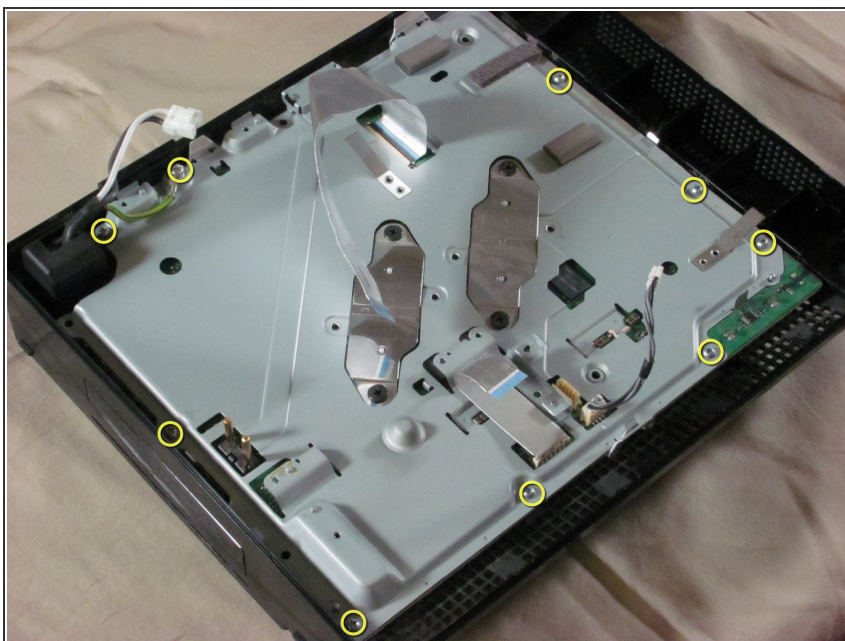
- Unplug the optical drive power cable.
- Detach the ribbon cable that connects the optical drive to the motherboard.
- Set the optical drive aside.

Step 10



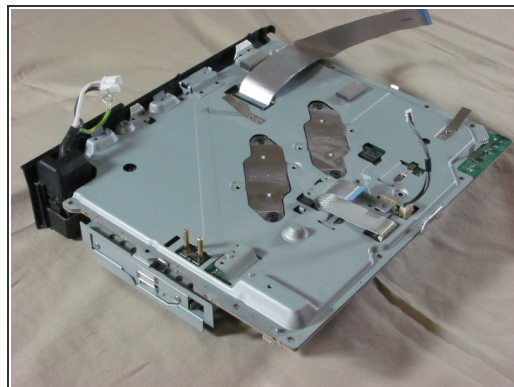
- Remove three screws (Phillips #2) from the wireless board and antenna.
- Detach the ribbon cable that connects the wireless board to the motherboard.

Step 11



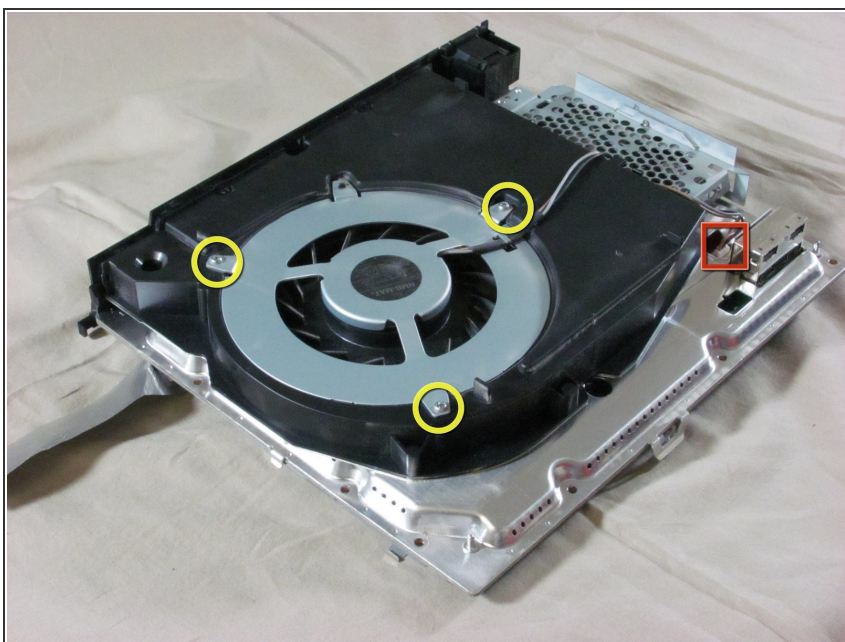
- Remove nine screws (Phillips #2) from the perimeter of the metal plate covering the motherboard.

Step 12



- Remove the hard drive door with a spudger.
- Lift the metal enclosure out of the plastic bottom case.

Step 13 — Fan



- Remove the three screws (Phillips #2).
- Disconnect the fan's power cable.
- Lift the fan straight up and out.

To reassemble your device, follow these instructions in reverse order.