



Mio MiVue 698 Disassembly

Written By: Peter





TOOLS:

- [Pro Tech Toolkit](#) (1)
- [iFixit Opening Tool](#) (1)
- [Phillips #0 Screwdriver](#) (1)
- [ESD Safe Tweezers Blunt Nose](#) (1)

Step 1 — Remove screws from the top



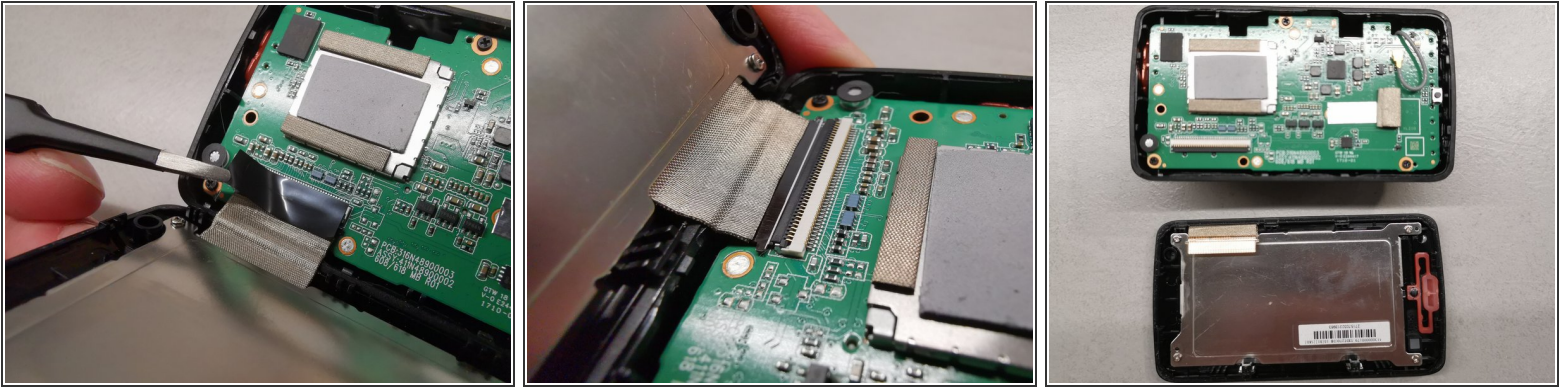
- We will disassemble Mio MiVue 698 (Dual) car camera in this guide.
- On the top of the unit, under the two caps, there are two Philips screws. Remove those caps and use Philips 0 screwdriver.

Step 2 — Open it up



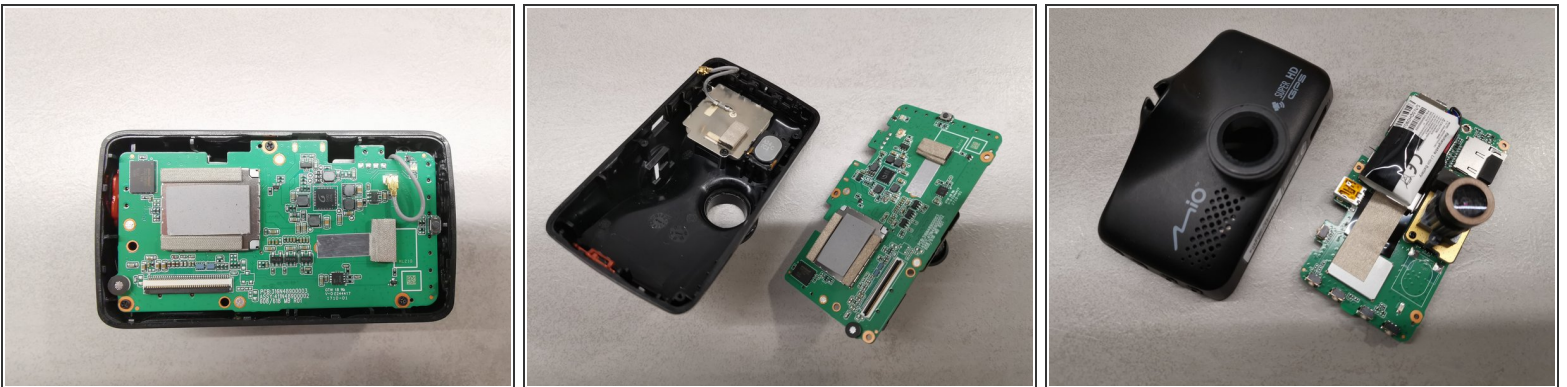
- Now use a prying tool and gently pry all four sides of the display assembly.
- Be careful not to damage the wire strip on the bottom.

Step 3 — Remove wires



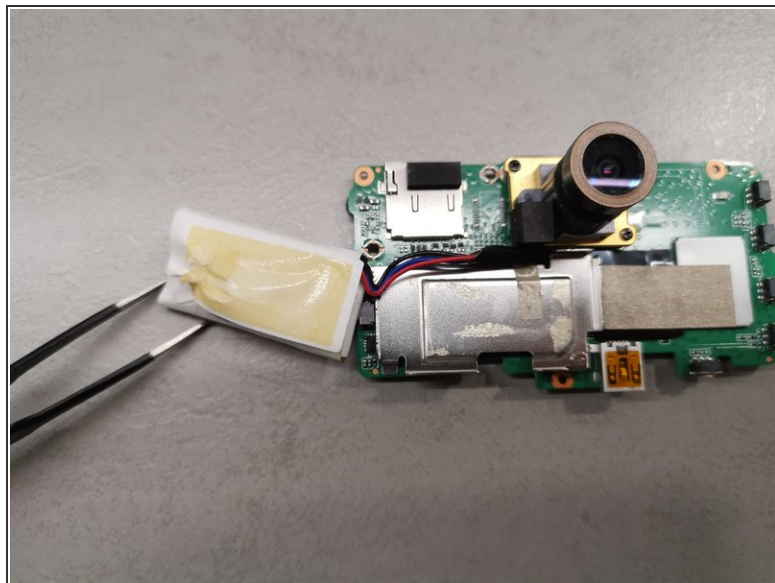
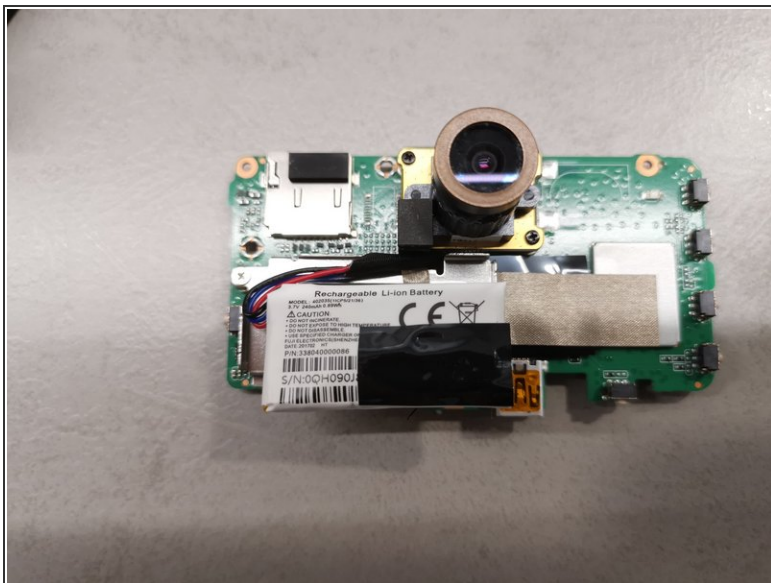
- Remove black adhesive tape from the contacts.
- Use a plastic tweezers to gently unlock wire strip from the contacts. You will end up with a disconnected display assembly.

Step 4 — Remove board from the case



- Disconnect the grey wire, which leads to GPS module.
- Remove three screws that hold the PCB.
- Remove the microSD card from the unit. Now you have to use a finger to carefully push against the lens from the front of the car camera, so the board will pop out.

Step 5 — Remove battery



- The battery is attached to the board with a small piece of tape.

Step 6 — Remove GPS module



- Remove two screws so you can remove the GPS module.

To reassemble your device, follow these instructions in reverse order.