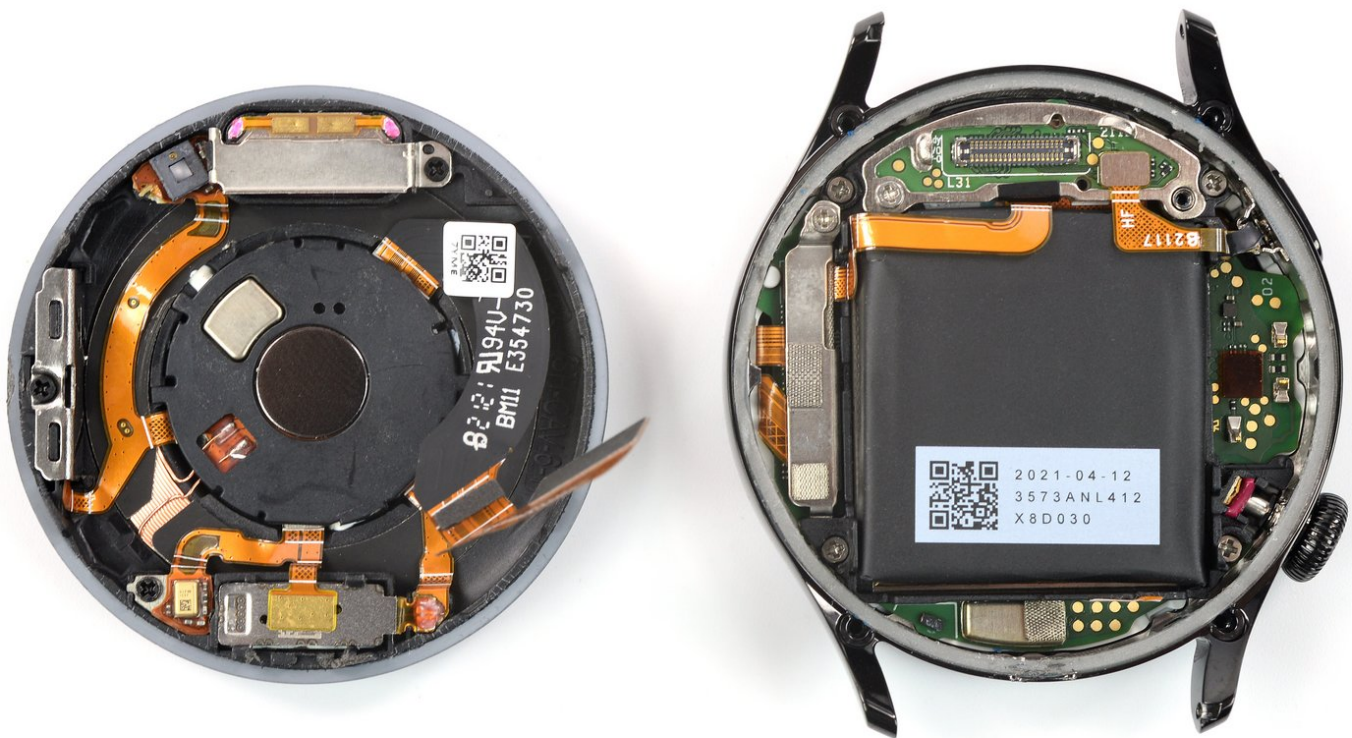




Opening the Huawei Watch 3

Use this guide to open the Huawei Watch 3 and...

Written By: Tobias Isakeit



INTRODUCTION

Use this guide to open the Huawei Watch 3 and remove the back cover.



TOOLS:

- [T30 Torx Driver](#) (1)
 - [Phillips PH000 Screwdriver](#) (1)
 - [Jimmy](#) (1)
 - [iFixit Opening Picks \(Set of 6\)](#) (1)
 - [Spudger](#) (1)
 - [Tweezers](#) (1)
-

Step 1 — Remove both wrist bands



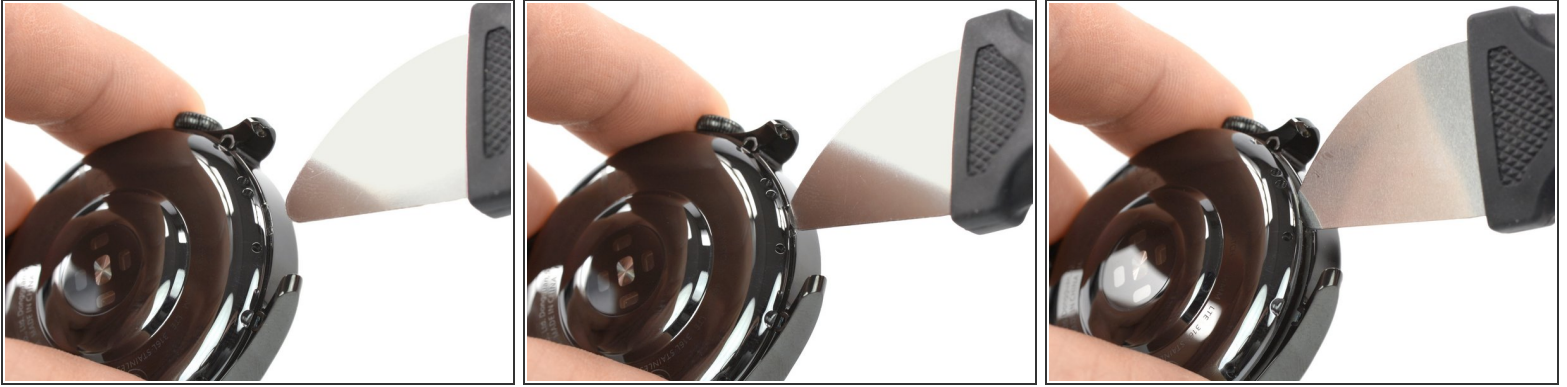
- Use your fingernail to pull the small metal pin on each wrist band towards the inside. This unlocks the wrist bands from the body of the watch.
- Remove the wrist bands.

Step 2 — Remove the four Torx screws



- Use a Torx T3 screwdriver to remove the four 4 mm-long screws on the back of the Huawei Watch 3.

Step 3 — Pry the back cover open



- Locate the small notch at the top of the back cover.
- Use a Jimmy to pry open the back cover by twisting it.

⚠ Using a sharp metal tool might cause cosmetic damage to the watch case. Covering the tool with a nitril glove can minimize the damage.

⚠ Don't remove the back cover just yet. It is still connected to the motherboard with a flex cable.

Step 4 — Loosen the back cover gasket



- Insert the tip of an opening pick between the back cover and the case.
- Slide the opening pick around the back cover to loosen the gasket from the back cover.

Step 5 — Lift the back cover



⚠ There is a ribbon cable running from the back cover to the motherboard.

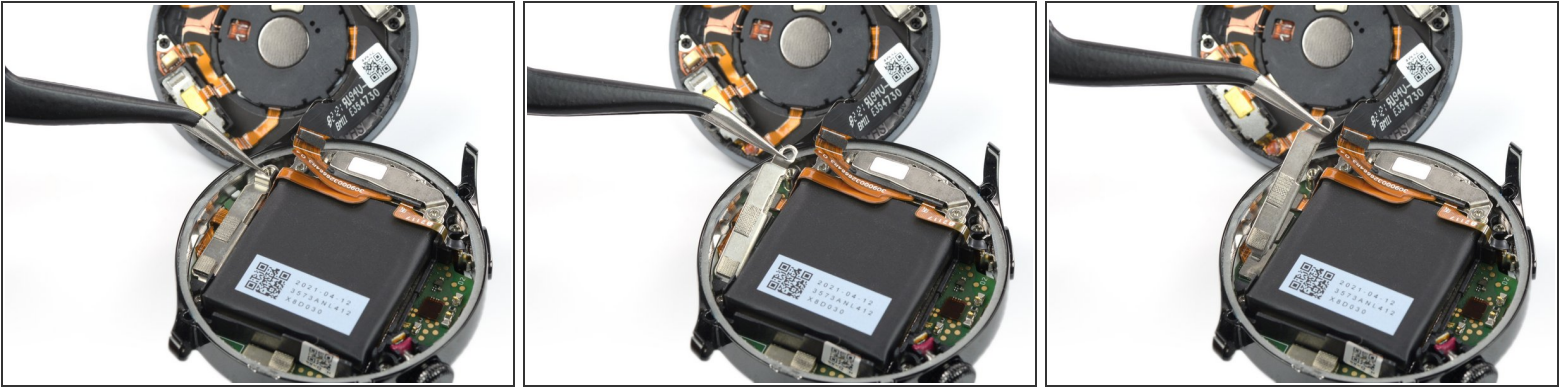
- Use an opening pick or your fingers to carefully lift the back cover open.
- Flip the back cover open away from the crown.
- ⓘ You can prop up the back cover to minimize the stress on the ribbon cable.

Step 6 — Remove the battery bracket screw



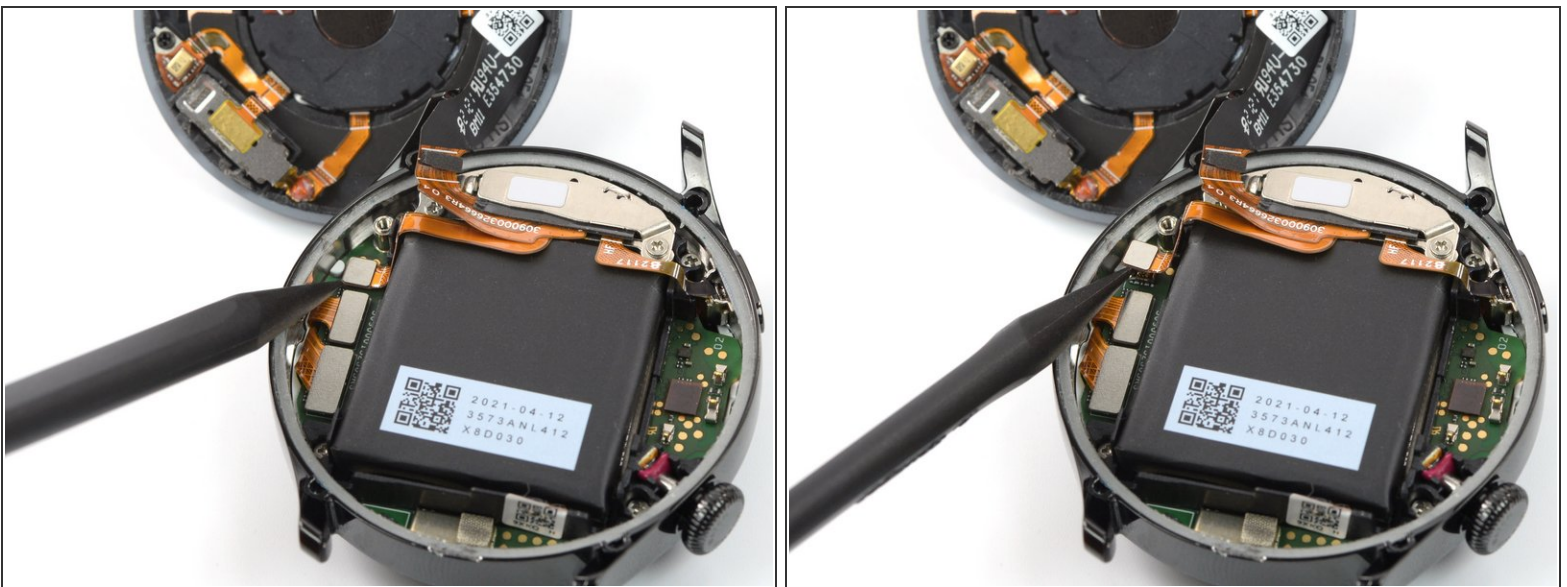
- Use a Phillips screwdriver to remove the 2.9 mm-long screw from the battery bracket.

Step 7 — Remove the battery bracket



- Use a pair of tweezers to lift the top of the battery bracket free from its screw socket.
- Unhook the opposite side of the bracket and remove it.

Step 8 — Unplug the battery connector



- Use the tip of a spudger to pry up and disconnect the battery connector.
- ❗ The battery connector is the smallest of the three connectors.

Step 9 — Remove the sensor bracket screw



- Use a Phillips screwdriver to remove the 2.9 mm-long screw from the sensor bracket.

Step 10 — Remove the sensor bracket



- Use a pair of tweezers to move the top of the sensor bracket free from a small latch near the case by rotating inwards.
- Unhook the opposite side of the bracket and remove it.

Step 11 — Unplug the sensor connector



- Use the tip of a spudger to pry up and disconnect the sensor connector.
- Remove the back cover.

To reassemble your device, follow these instructions in reverse order.

Repair didn't go as planned? Try some [basic troubleshooting](#), or ask our <https://www.ifixit.com/Answers/Device/Hu...> for help.