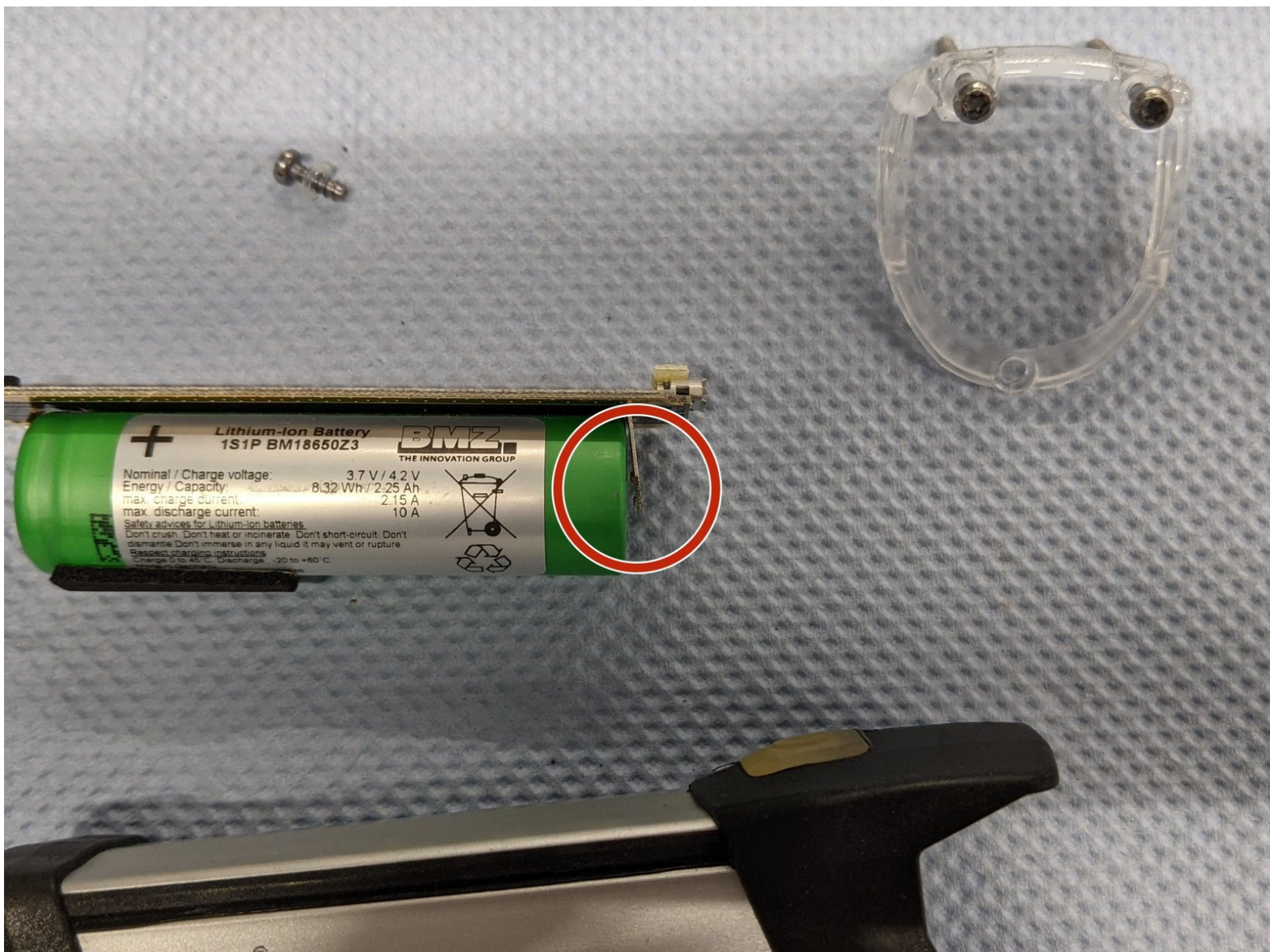




# Busch+Müller IXON Core Connecting rechargeable battery

After the drop down of the bike light, it wasn't working anymore. One of the electrical contacts broke loose.

Written By: Christian



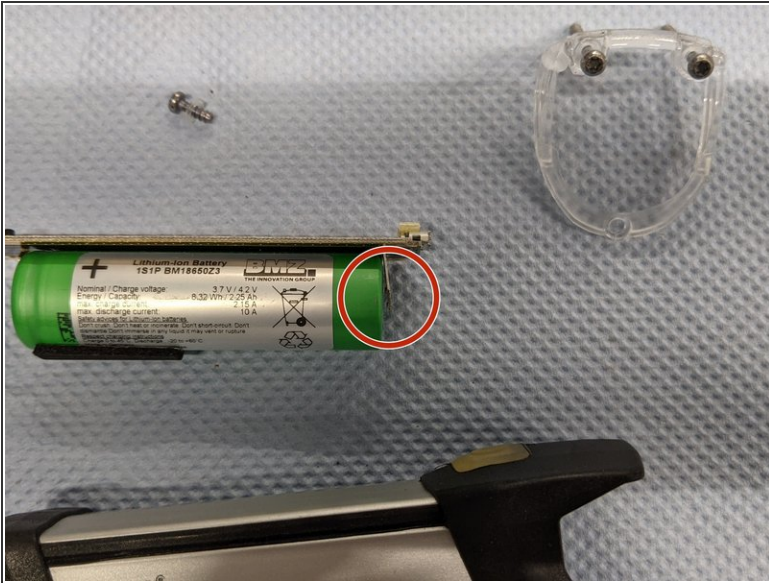


## TOOLS:

- [TR8 Torx Security Screwdriver](#) (1)
  - [New Item](#) (1)
-



## Step 1 — Missing connection



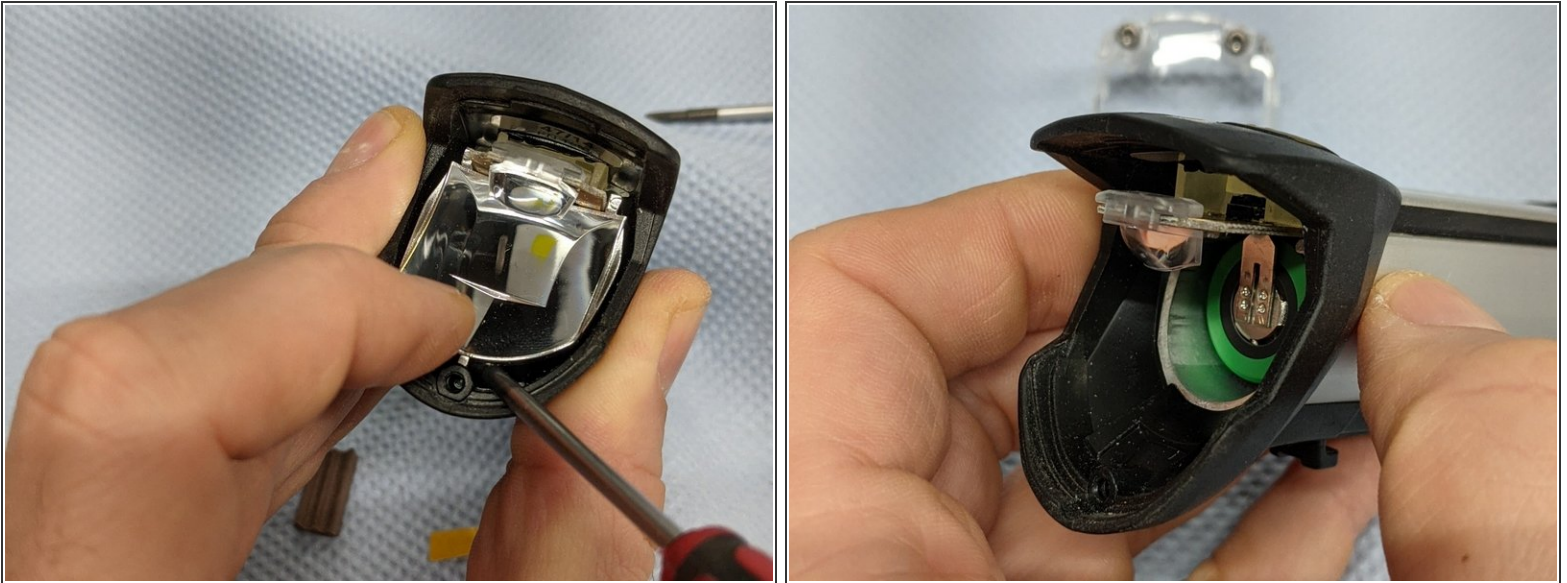
- Here the loose connection is displayed.

## Step 2 — Remove headlamp glass



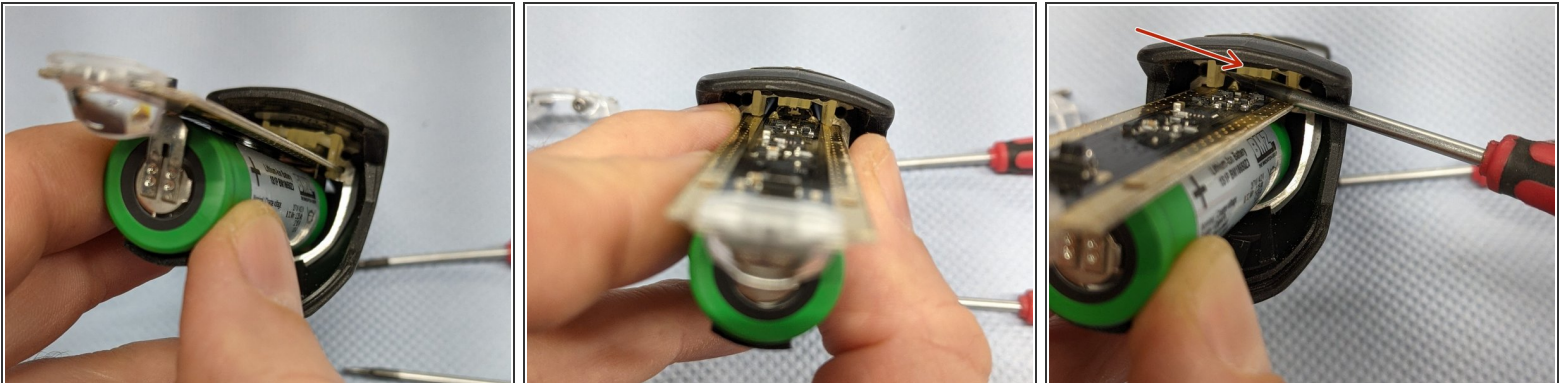
- Remove the three Torx-screws.

### Step 3 — Remove the focus mirror



- The focusing mirror is clamped behind the rubberized housing. It can be levered out of the holder with a screwdriver.

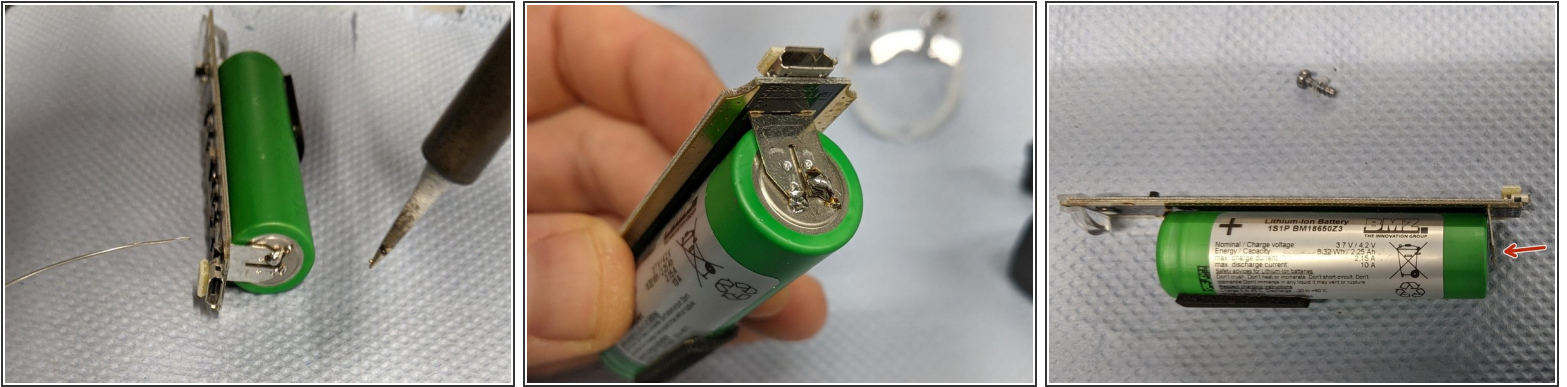
### Step 4 — Remove PCB with battery



- With a little bit of shaking, the circuit board should come out along with the battery pack. It may be necessary to push the inner part of the ON button a little to the side.

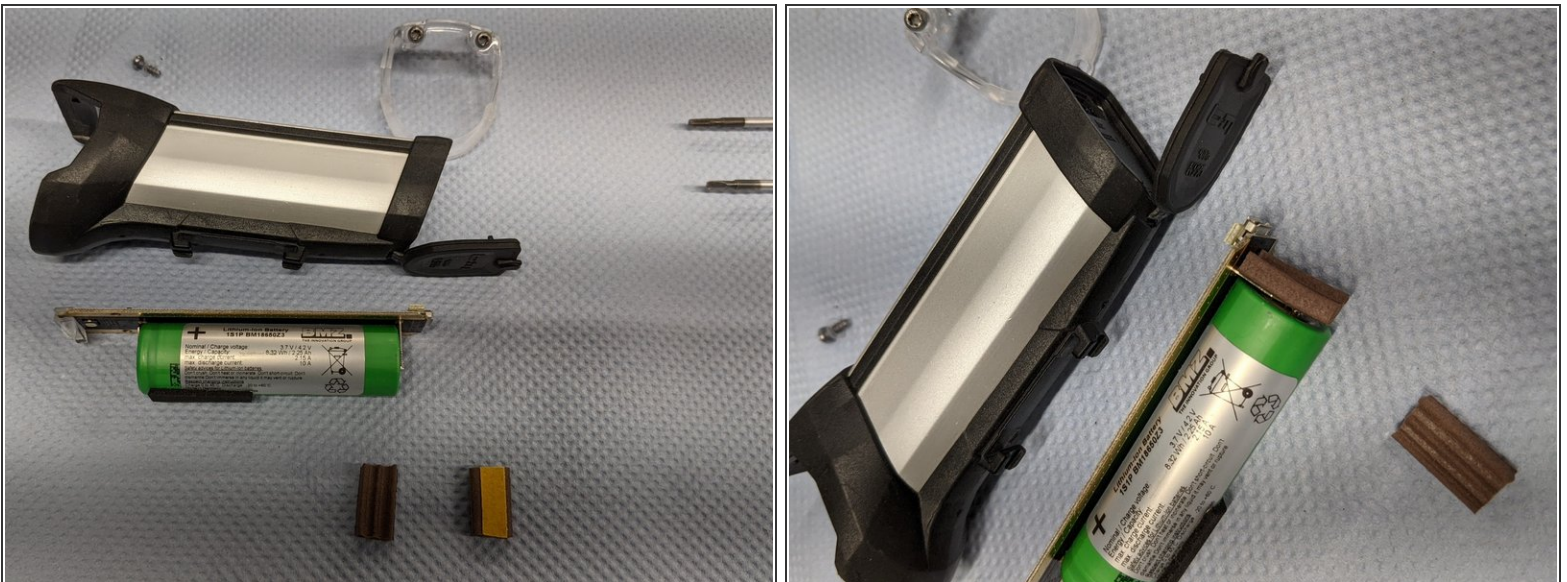


## Step 5 — Reconnecting the battery



- The contact arm must be bent slightly so that it presses against the battery. Then connect it to the battery it with some solder.
- This work step should be carried out by a specialist, since the battery can be thermally damaged by temperatures of 180°C and this could be dangerous. During normal work with a soldering iron, the battery should never reach that temperature range.

## Step 6 — Steadying the battery unit



- This step is optional. A little foam should be used to prevent the battery unit from moving in the housing.

Follow the steps in reverse order to reassemble your device