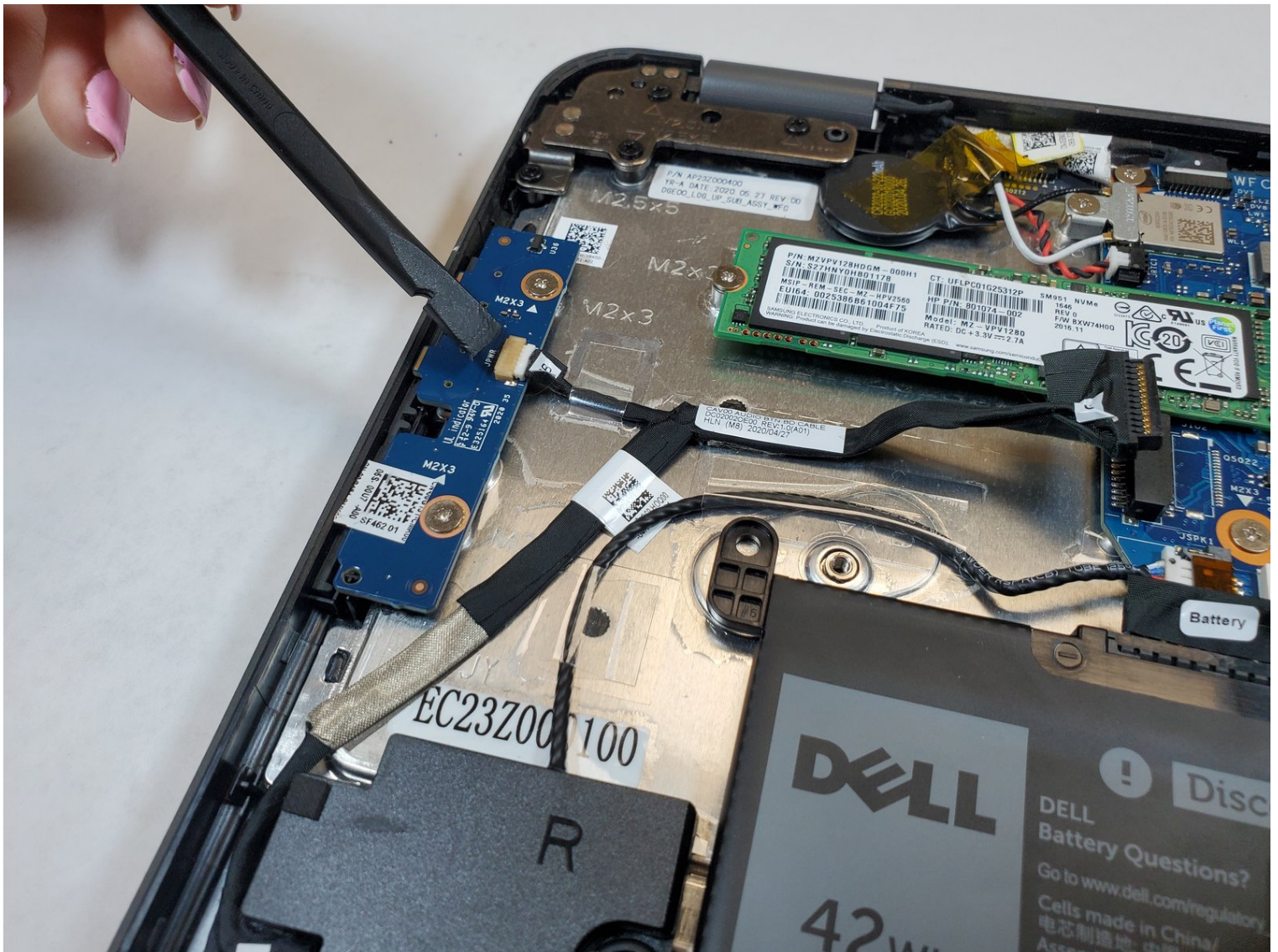




Dell Latitude 3190 Power Switch Board Replacement

Turning your laptop on is a very important step...

Written By: Haley Smith



INTRODUCTION

Turning your laptop on is a very important step in using your device. If you are unable to do this and/or your volume button no longer works properly, it may be time to replace the power switch board. The following guide outlines a step-by-step process in removing and replacing the power switch board on your Dell Latitude 3190.

The power switch board is a key component to tuning on your laptop and other components necessary to using the Dell Latitude 3190. This removal and replacement process requires no background experience and the list of needed tools are shown below.

TOOLS:

Spudger (1)

Phillips #0 Screwdriver (1)

Phillips #00 Screwdriver (1)

iFixit Opening Tool (1)

Step 1 — Base Cover



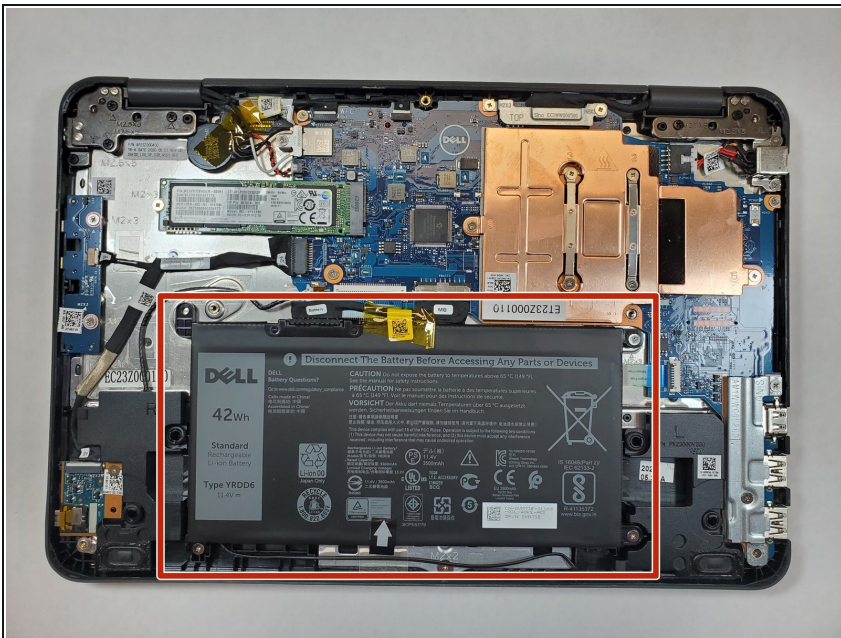
- Use a Phillips #0 screwdriver to remove the seven 7 mm screws securing the back case.

Step 2



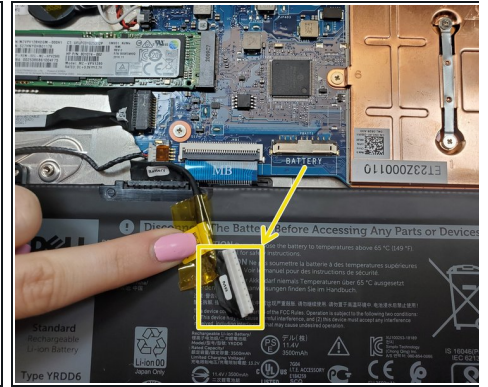
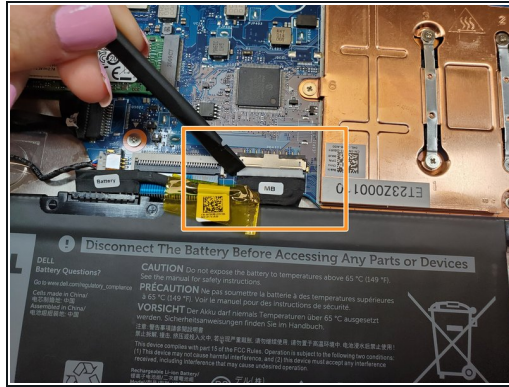
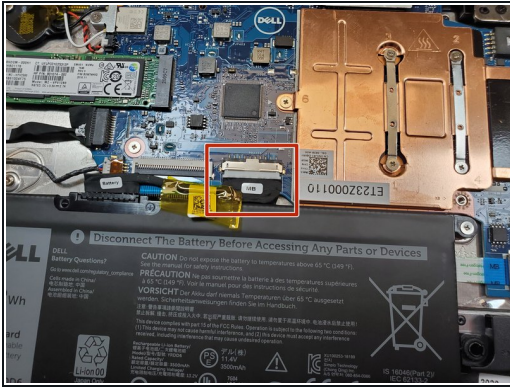
- Using a plastic opening tool carefully separate the plastic base cover from the rest of the laptop.
- Lift the bottom cover from the laptop.

Step 3 — Battery



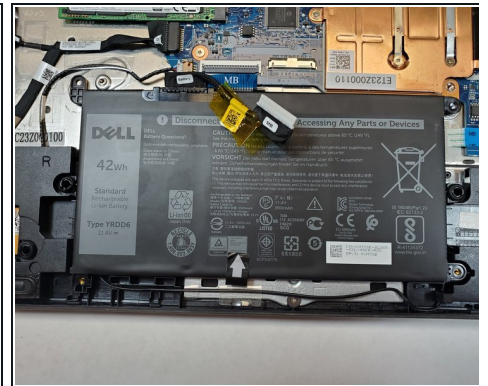
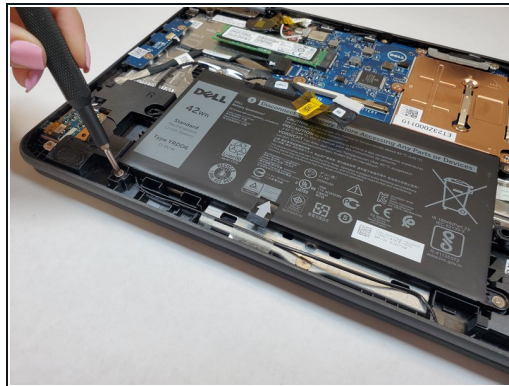
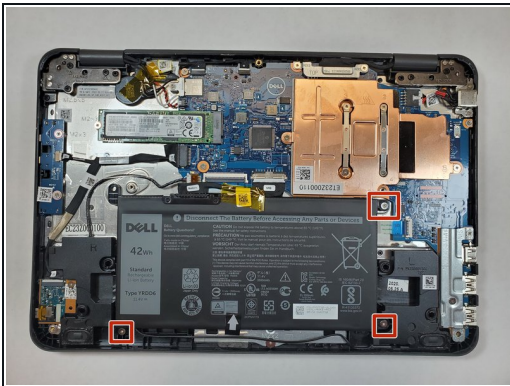
- Locate the battery.

Step 4



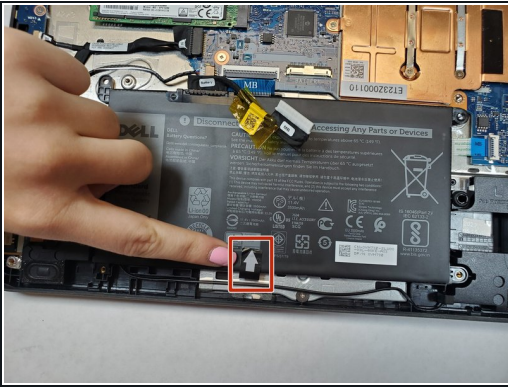
- Disconnect the battery cable located on the top of the battery.
- Use the spudger and disconnect the battery cable.
- Pull the cable out of the way.

Step 5



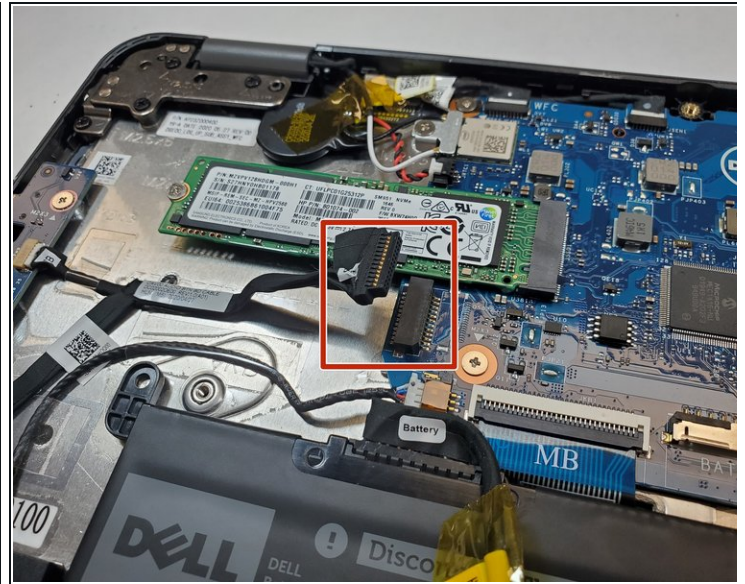
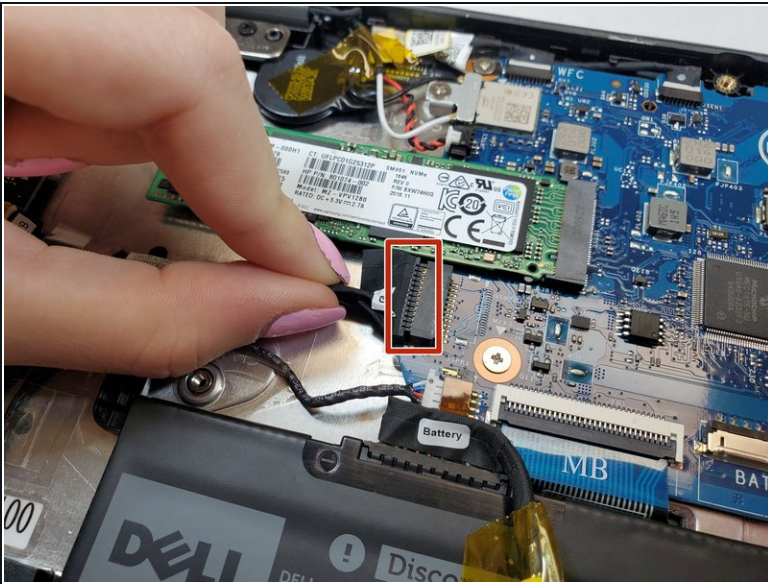
- Use a Phillips #0 screwdriver to remove the three 3 mm screws from the battery.

Step 6



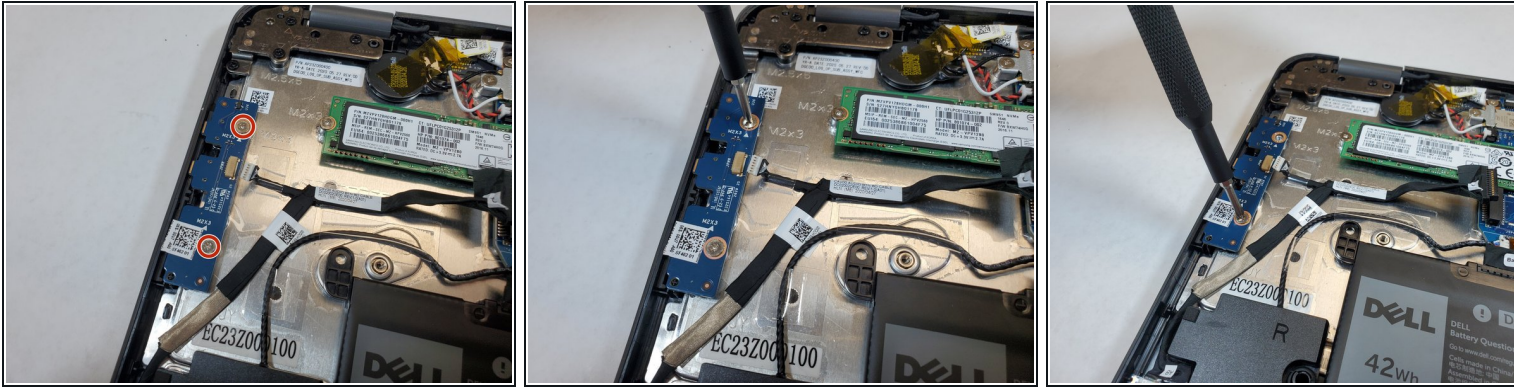
- Pull the black battery tap upwards to remove the battery.
- ⓘ The battery adhesive is strong, do not be afraid to use force. You may need to use the spudger or opening tool as a wedge.

Step 7 — Power Switch Board



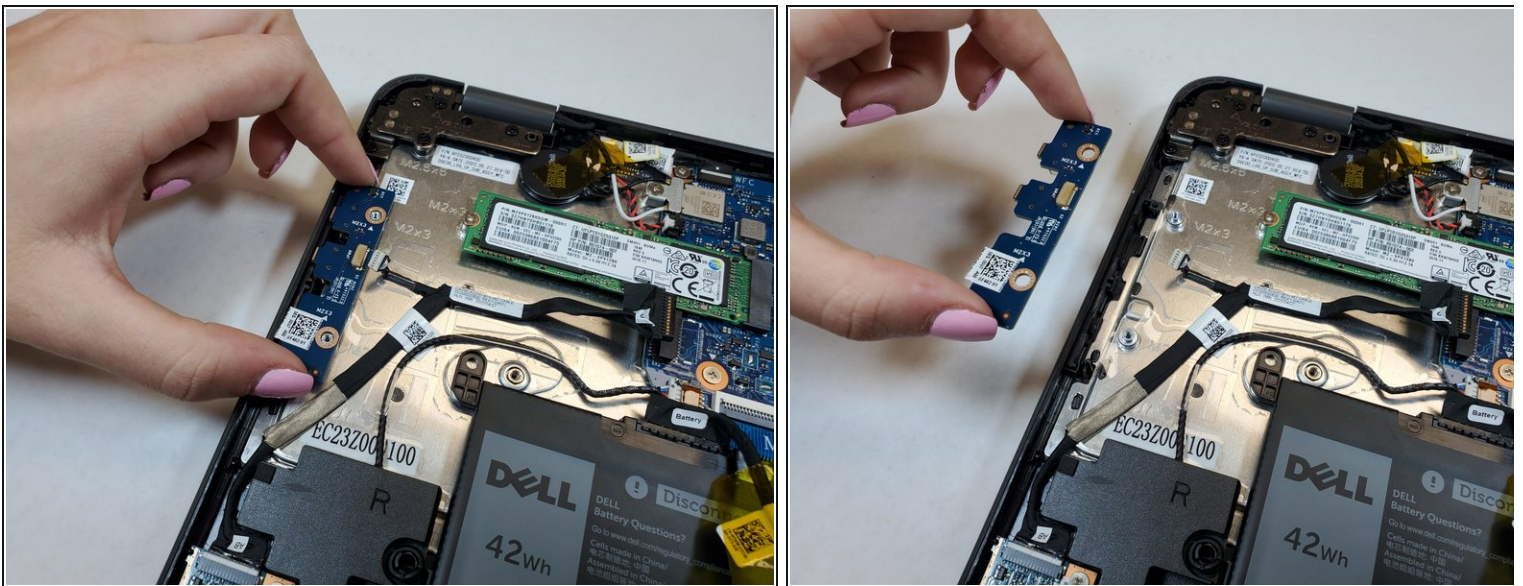
- Disconnect the power switch cable from the motherboard.

Step 8



- Remove the two 3 mm screws that secure the power switch board on the computer.

Step 9



- Lift the power switchboard away from the computer.

To reassemble your device, follow these instructions in reverse order.