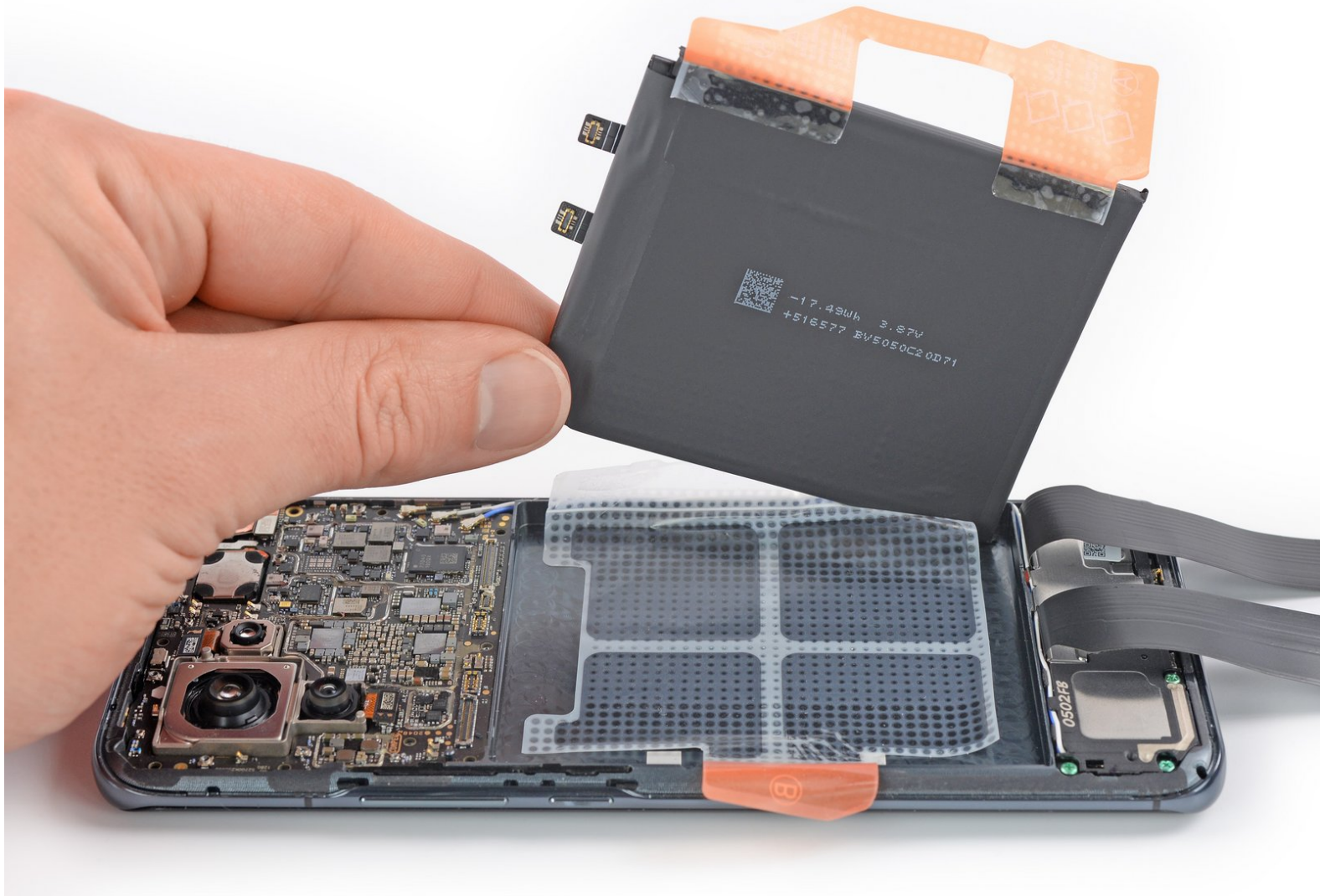




Mi 11 Battery Replacement

Use this guide to remove or replace the battery...

Written By: Dominik Schnabelrauch



INTRODUCTION

Use this guide to remove or replace the battery on your Xiaomi Mi 11.

If your battery is swollen, [take appropriate precautions](#).

For your safety, discharge your battery below 25% before disassembling your phone. This reduces the risk of a dangerous thermal event if the battery is accidentally damaged during the repair.

You'll need replacement adhesive to reattach components when reassembling the device.

Note: In this guide we're using a [teardown device](#). This means that the motherboard has been deshielded during the teardown procedure. You can still do all the repairs with this guide but your motherboard will look [like this](#).



TOOLS:

- [iOpener](#) (1)
- [Suction Handle](#) (1)
- [iFixit Opening Picks \(Set of 6\)](#) (1)
- [Isopropyl Alcohol \(90% or Greater\)](#) (1)
optional
- [Microfiber Cleaning Cloths](#) (1)
optional
- [Heat Gun](#) (1)
optional
- [Phillips #00 Screwdriver](#) (1)
- [Spudger](#) (1)
- [ESD Safe Tweezers Blunt Nose](#) (1)



PARTS:

- [Xiaomi Mi 11 Battery](#) (1)
- [iFixit Adhesive Remover \(for Battery, Screen, and Glass Adhesive\)](#) (1)
optional
- [Precut Adhesive Card](#) (1)
optional

Step 1 — Heat the rear glass



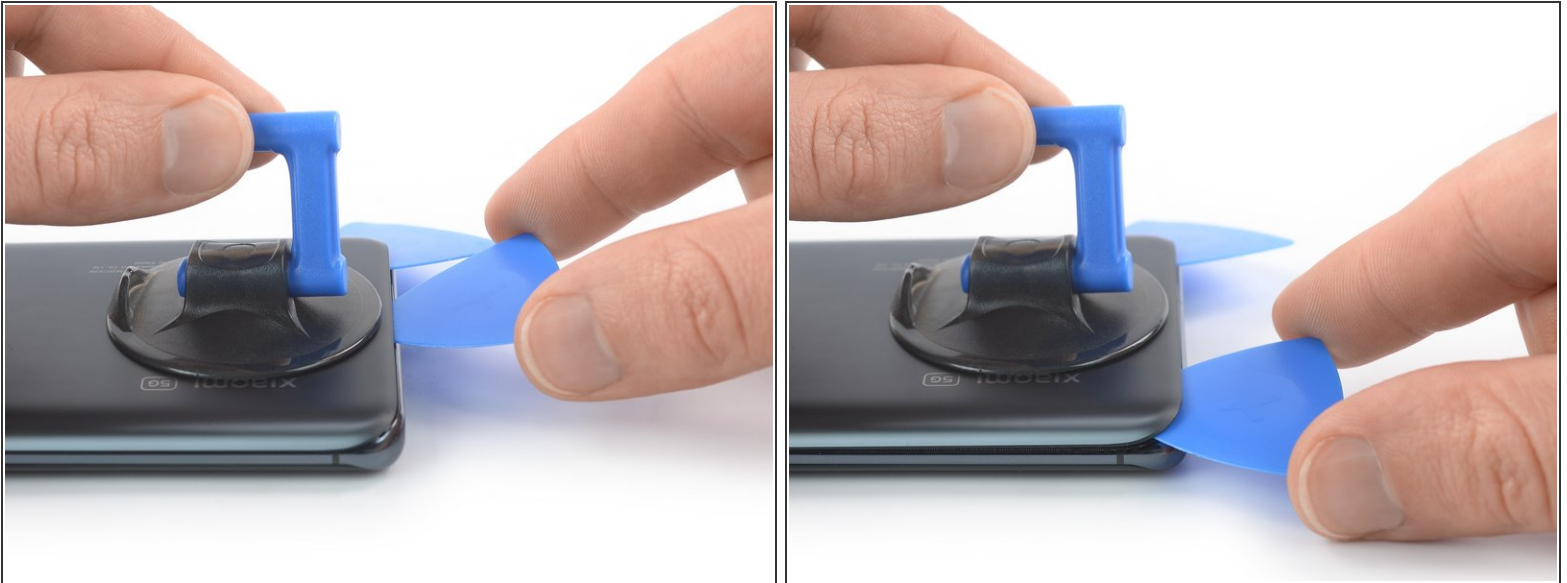
- [Prepare an iOpener](#) and apply it to the rear glass for at least two minutes to loosen the adhesive underneath.
- ⓘ A hair dryer, heat gun, or hot plate may also be used, but be careful not to overheat the phone—the display and internal battery are both susceptible to heat damage.

Step 2 — Insert an opening pick



- Secure a suction handle to the bottom edge of the rear glass, as close to the edge as possible.
 - ❗ If the rear glass is cracked, the suction handle may not stick. Try [lifting it with strong tape](#), or superglue the suction handle in place and allow it to cure so you can proceed.
- Lift the back cover with the suction handle to create a small gap between the back cover and the frame.
 - ❗ In case you have trouble creating a gap, apply more heat to further soften the adhesive. Follow the [iOpener](#) instructions to avoid overheating.
- Insert an opening pick into the gap you created.
- Slide the opening pick to the bottom right corner to slice the adhesive.
- Leave the opening pick in place to prevent the adhesive from resealing.


Step 3 — Slice the adhesive



- Insert a second opening pick at the bottom edge of your phone.
- Slide the opening pick to the bottom left corner to slice the adhesive.
- Leave the opening pick in place to prevent the adhesive from resealing.

Step 4 — Slice the adhesive



 If the adhesive becomes hard to cut, it has most likely cooled down. [Use your iOpener](#) to reheat it.

- Insert a third opening pick at the bottom left corner of your phone.
- Slide the opening pick along the left edge of your Xiaomi Mi 11 to slice the adhesive.
- Leave the opening pick in the top left corner to prevent the adhesive from resealing.

Step 5



- Insert a fourth opening pick underneath the top left corner of your phone.
- Slide the opening pick along the top edge to slice the adhesive.
- Leave the opening pick in the top right corner to prevent the adhesive from resealing.

Step 6



- Insert a fifth opening pick underneath the top right corner.
- Slide the opening pick along the right edge of the rear glass to slice the remaining adhesive.

Step 7 — Remove the rear glass



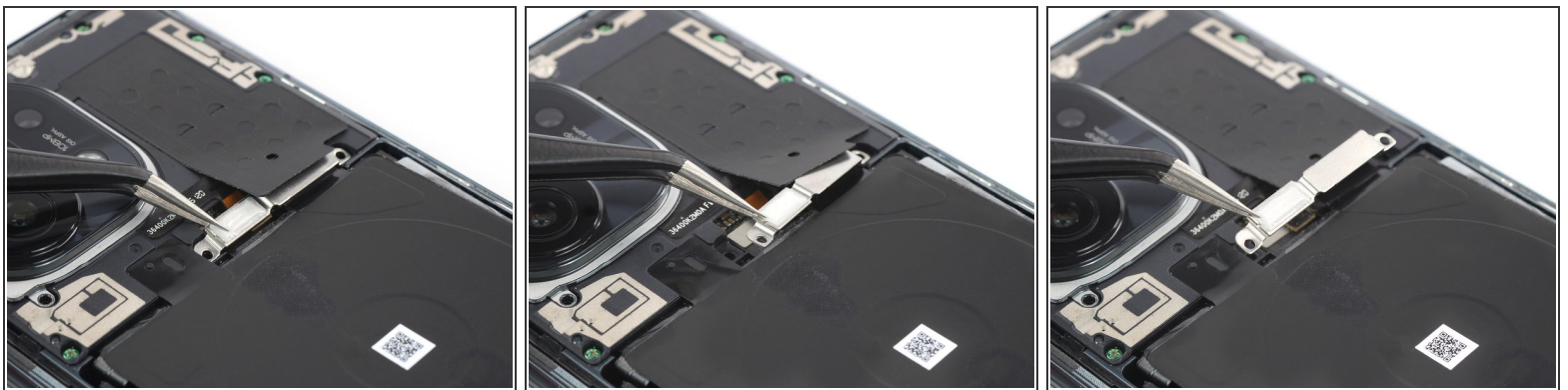
- Remove the rear glass.
- ✦ Apply new adhesive where necessary after cleaning the relevant areas with isopropyl alcohol (>90%).
- ✦ [Secure the new rear glass with pre-cut adhesive](#) or double-sided adhesive tape. After installing the rear glass, apply strong, steady pressure to your phone for several minutes to help the adhesive form a good bond—a stack of heavy books works well.

Step 8 — Unfasten the metal bracket screws



- Use a Phillips screwdriver to remove the screws securing the connector metal bracket and the camera cover:
 - Two 4.4 mm-long screws
 - One 4.9 mm-long screw
 - Two 3.9 mm-long screws

Step 9 — Remove the metal bracket



- Use a pair of tweezers to remove the connector bracket by pulling it in the direction of the battery.

Step 10 — Disconnect the flash assembly



- Use the pointed end of a spudger to disconnect the flash assembly cable by prying the connector straight up from its socket.

Step 11 — Disconnect the right battery cable



- i** The battery of the Xiaomi Mi 11 has two separate flex cables. You need to disconnect both in order to disconnect the battery completely.
- Use a spudger to disconnect the right battery cable by prying the connector straight up from its socket.

Step 12 — Remove the camera cover



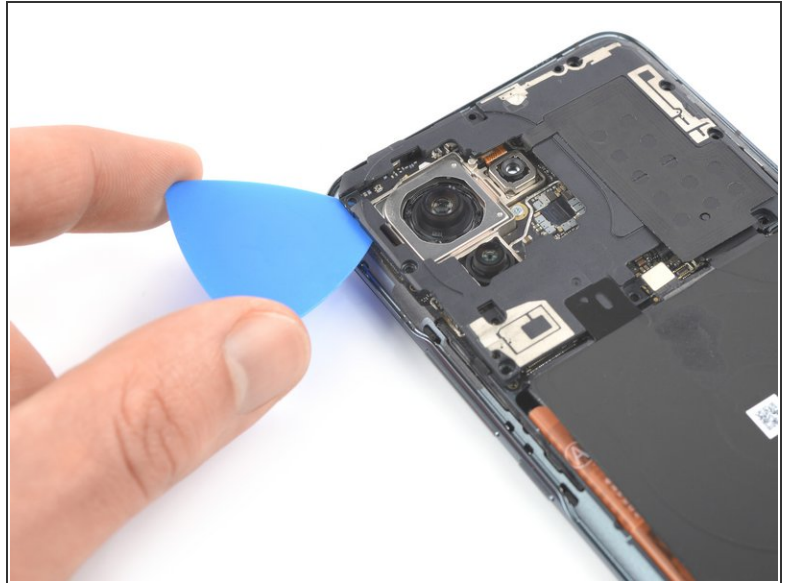
- Use your fingers or a pair of tweezers to carefully lift the camera cover including the flash assembly off the camera lenses and remove it.

Step 13 — Unfasten the motherboard cover screws



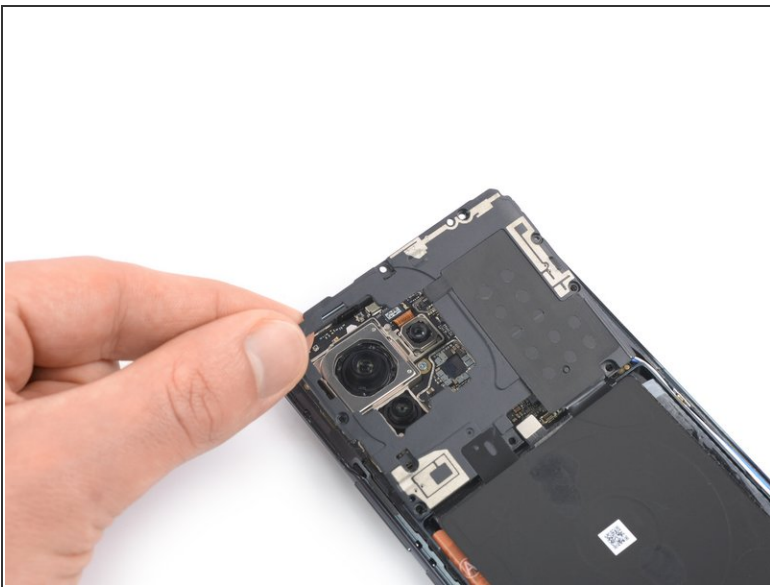
- Use a Phillips screwdriver to remove the five 3.9 mm-long screws securing the motherboard cover.

Step 14 — Pry up the motherboard cover



- Insert an opening pick underneath the bottom left edge of the motherboard cover.
- Slide the opening pick along the left edge of the motherboard cover and pry it up.

Step 15 — Remove the motherboard cover



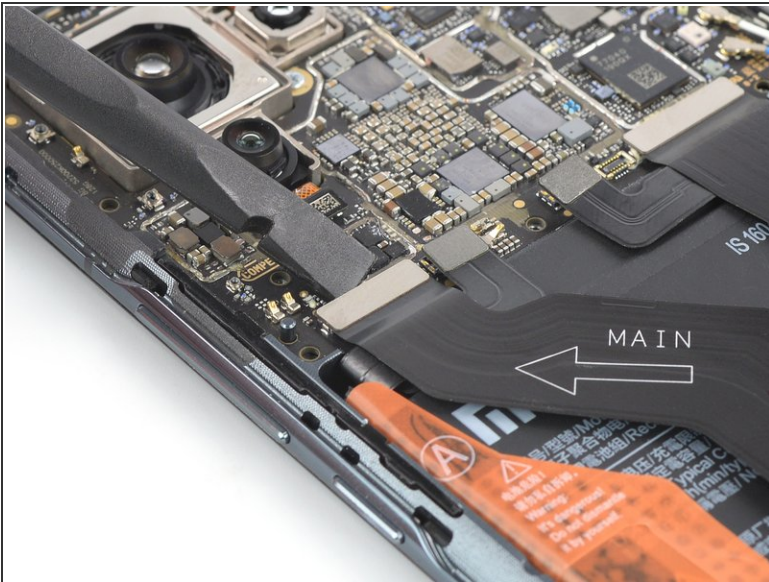
- Remove the motherboard cover.

Step 16 — Disconnect the left battery cable



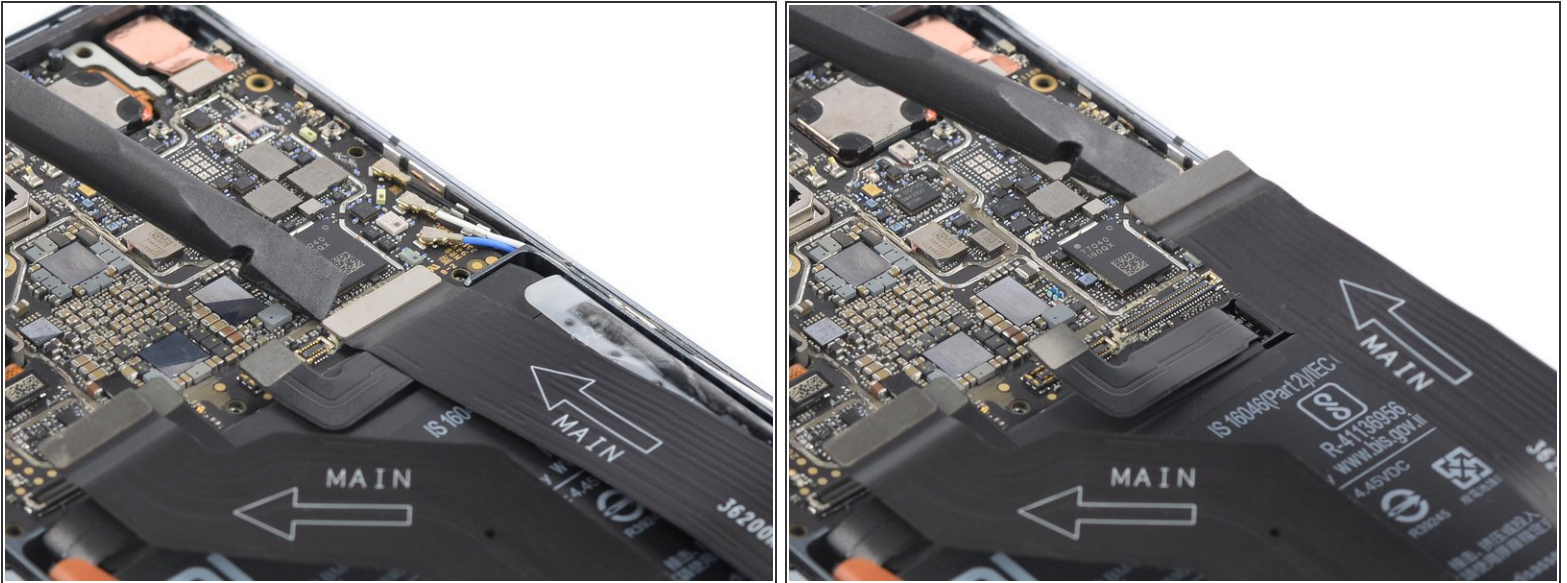
- Use a spudger to disconnect the left battery cable by prying the connector straight up from its socket.

Step 17 — Disconnect the left interconnect cable



- Use a spudger to disconnect the left interconnect cable by prying the connector straight up from its socket.

Step 18 — Disconnect the right interconnect cable



- Use a spudger to disconnect the right interconnect cable by prying the connector straight up from its socket.

Step 19 — Free the battery



⚠ During the following step do not fold the cables sharply and only bend them to avoid cable damage.

- Fold the interconnect flex cables towards the charging port in order to get access to the battery pull tabs.
- ① You might want to use a small piece of tape to temporarily stick the cables onto your working surface to avoid accidentally damaging them during the battery removal.

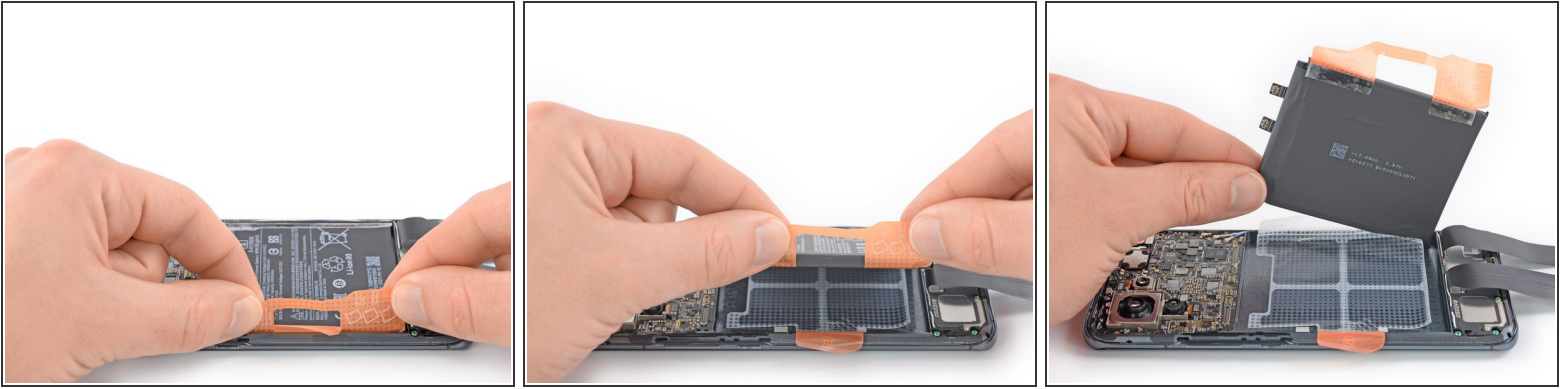
Step 20 — Peel off the battery pull-tabs



⚠ Take care not to puncture or bend the battery with your tool—a punctured or bent battery may leak dangerous chemicals or cause a thermal event.

- Use a pair of blunt nose tweezers or a clean fingernail to peel the orange adhesive strip labelled with an **A** off the battery.
- Use a pair of blunt nose tweezers or a clean fingernail to peel the orange adhesive strip labelled with a **B** off the battery.

Step 21 — Remove the battery



- Grab both pull-tab ends labelled with an **A** and pull up on the orange adhesive strip to lift the battery out of its recess and swing it up to an upright position.
- ❗ Although these adhesive tabs are supposed to make the battery removal easier, they may require some force. In case you're having trouble removing the battery, you can apply [a heated iOpener](#) to the center of the display to loosen the adhesive underneath.
- Peel the battery off the remaining adhesive.
- Remove the battery.
- ✦ During reassembly, temporarily reconnect the battery to the motherboard to help align it correctly. Disconnect the battery after it is seated.
- ✦ In case you're replacing the adhesive sticker with a new one, peel the battery's adhesive sticker off the midframe and clean the relevant areas with isopropyl alcohol (>90%). Let the alcohol dry before installing new adhesive.

If possible, turn on your device and test your repair before installing new adhesive and resealing.

For optimal performance, [calibrate your newly installed battery](#) after completing this guide.

[Secure the new battery with pre-cut adhesive](#) or double-sided adhesive tape. In order to position it correctly, apply the new adhesive into the device at the places where the old adhesive was located, not directly onto the battery. Press the new battery firmly into place.

Compare your new replacement part to the original part—you may need to transfer remaining components or remove adhesive backings from the new part before installing.

To reassemble your device, follow these instructions in reverse order. Apply new adhesive where necessary after cleaning the relevant areas with isopropyl alcohol (>90%).

Take your e-waste to an [R2 or e-Stewards certified recycler](#).

Repair didn't go as planned? Try some [basic troubleshooting](#), or ask our [Answers community](#) for help.