



2006 Toyota Tacoma Signal Lights Replacement

If your turn signal lights aren't responding...

Written By: Sofía Galán



INTRODUCTION

If your turn signal lights aren't responding when you use the turn signal ignition, it may be a sign that you need to replace the light bulb for your signal lights. Signal lights are an important feature of cars, as they provide security for the driver and others around them. While they are proven to last long, it can be expensive to replace if done by a professional.

In this guide, you will find a step by step guide detailing the process of repairing and/or changing signal lights in the 2006 Toyota Tacoma, requiring little to no experience on the subject.

TOOLS:

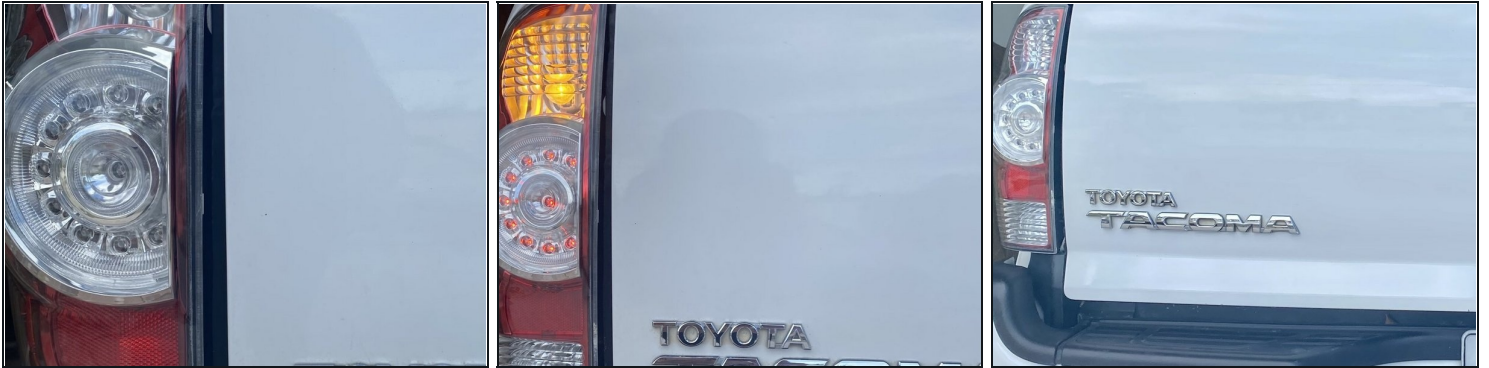
[Safety Glasses](#) (1)

Step 1 — Signal Lights



- Turn on the car, and switch the signal light ignition, so that both lights turn on.

Step 2



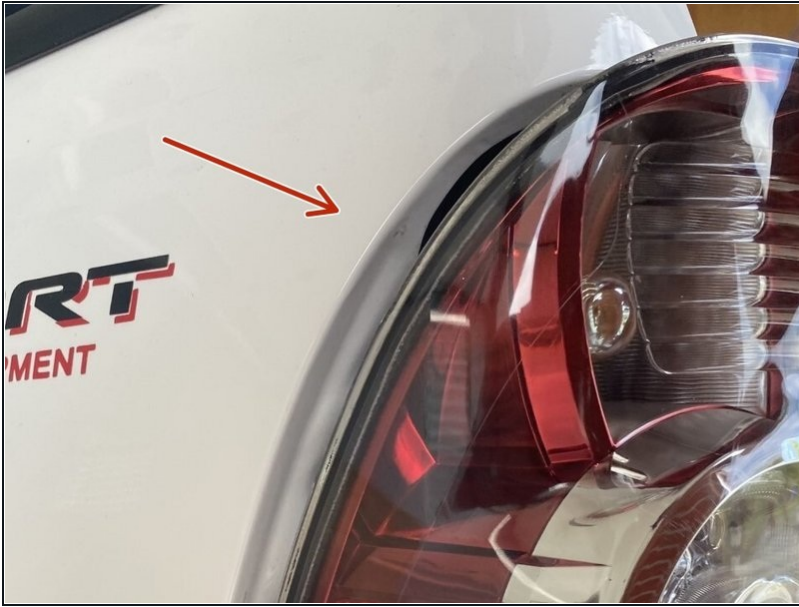
- Turn on your car, and check the signal lights on the rear end of the car.
- Identify which side stopped blinking and/or burnt out (left side or right side).

Step 3



- Find a new replacement signal bulb according to the side where the light needs to be replaced.
- ① Use the car model, make and year to find the light that best suits the car.

Step 4



- Prepare to remove the old turn signal.
- Open the hood of the lens.

Step 5



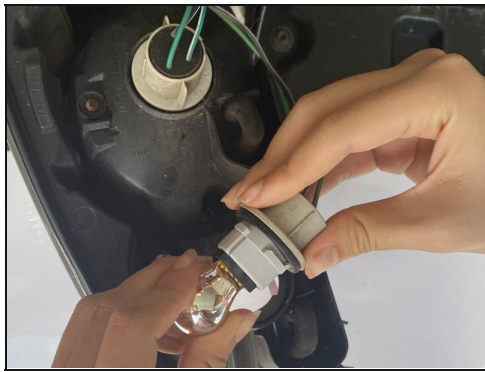
- If needed, use a screwdriver to remove hood.

Step 6



- Remove the light bulb casing.

Step 7



- ① If needed, replace the electric connector with a new one, aligning and screwing the replacement in the same place.
- Push the locking and turn it counterclockwise to unscrew the bulb.

Step 8



- Replace the bulb with the new one.
- Insert the new bulb. Align the pins on the bulb with the ones inside of the car.

Step 9



- Place the new bulb back on the designated place.
- Replace the hood/lens back on the car.

Step 10



- ☑ Turn the ignition switch on and engage the blinker lever (first step) to ensure proper instalment.

To reassemble your device, follow these instructions in reverse order.