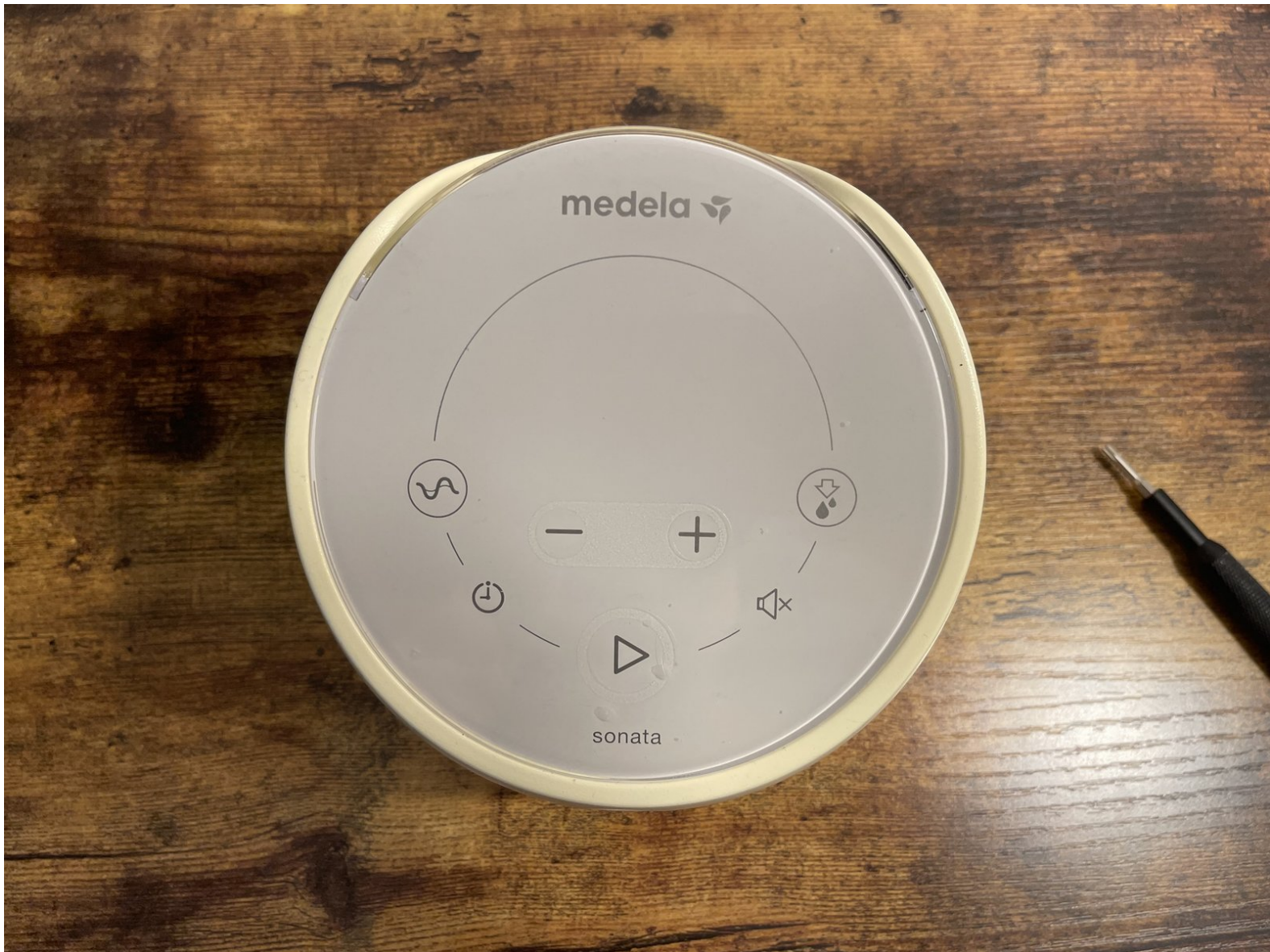




Medela Sonata Breast Pump Teardown

Teardown of Medela Sonata Smart Breast Pump.

Written By: Colin Hearn





TOOLS:

- [TR10 Torx Security Screwdriver](#) (1)
 - [T20 Torx Screwdriver Bit](#) (1)
-

Step 1 — Medela Sonata Breast Pump Teardown



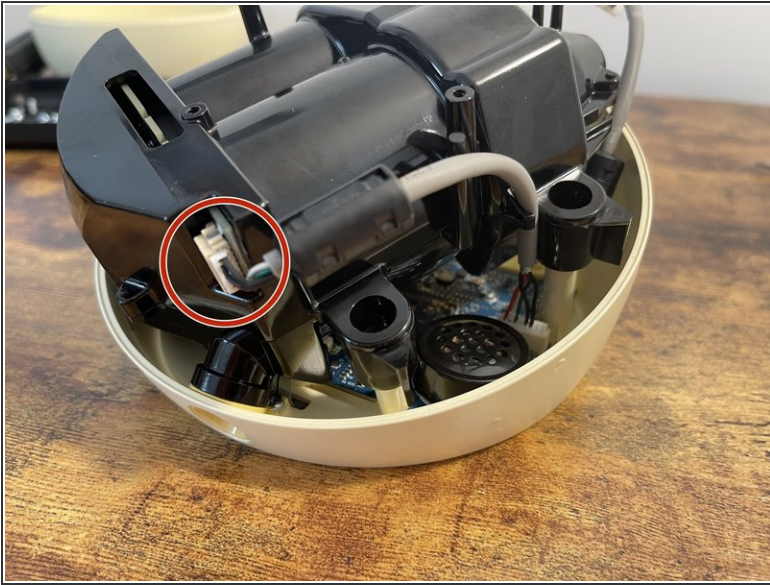
- Remove the 4 hidden T10 screws.
- Lift and remove the bottom cover from the pump.

Step 2



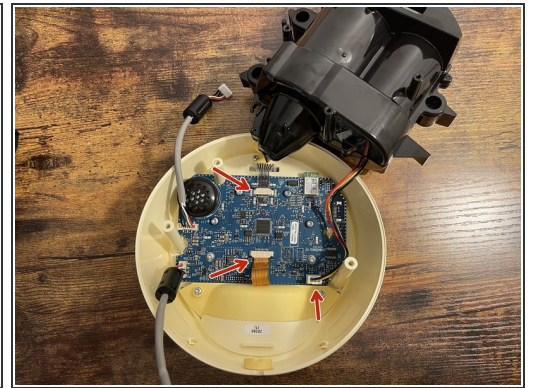
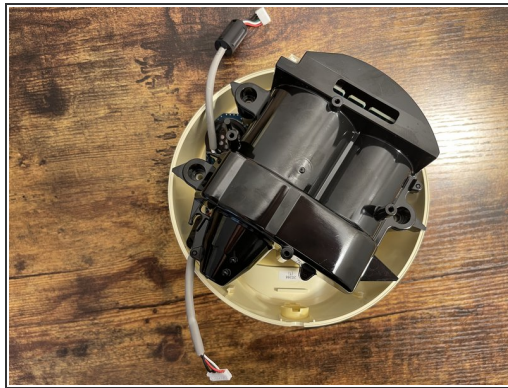
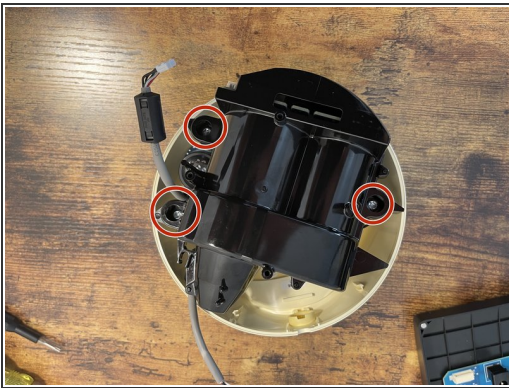
- Remove the cable from the blue board with the power button and charging port.

Step 3



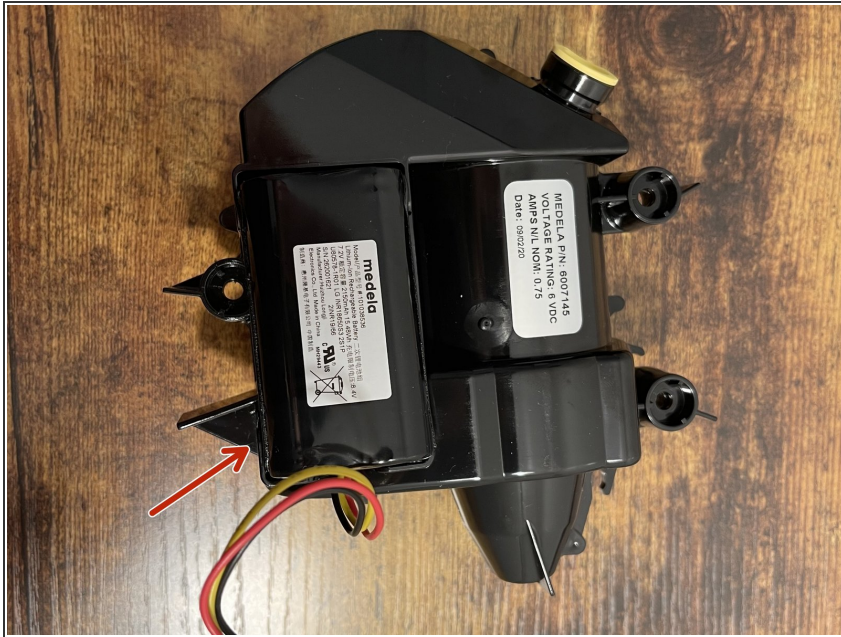
- Remove cable from port on the side of the black pump casing.

Step 4



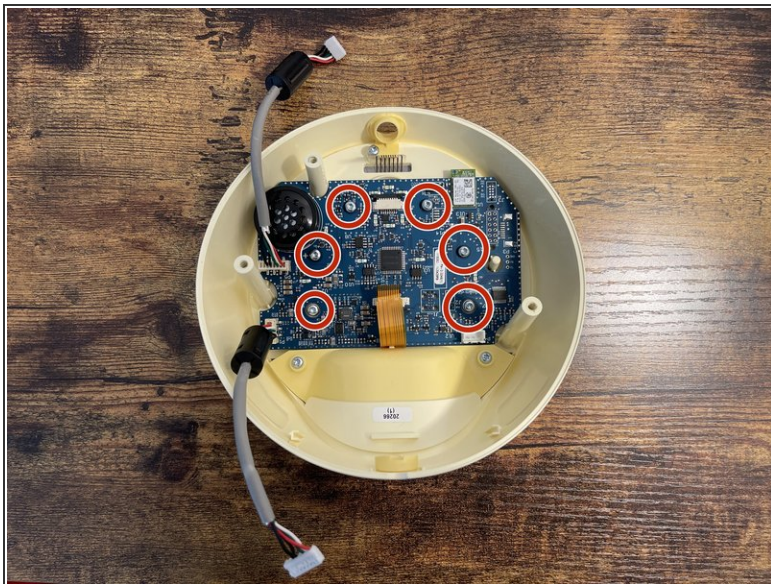
- Remove the 3 T20 screws from black pump casing.
- Carefully lift and remove black pump casing. There will still be one wire connecting to the main board.
- Unplug connector on the main board, that attaches to the pump.
- Unplug the 2 ribbon cables from the main board by sliding the tab out and removing the cable.

Step 5



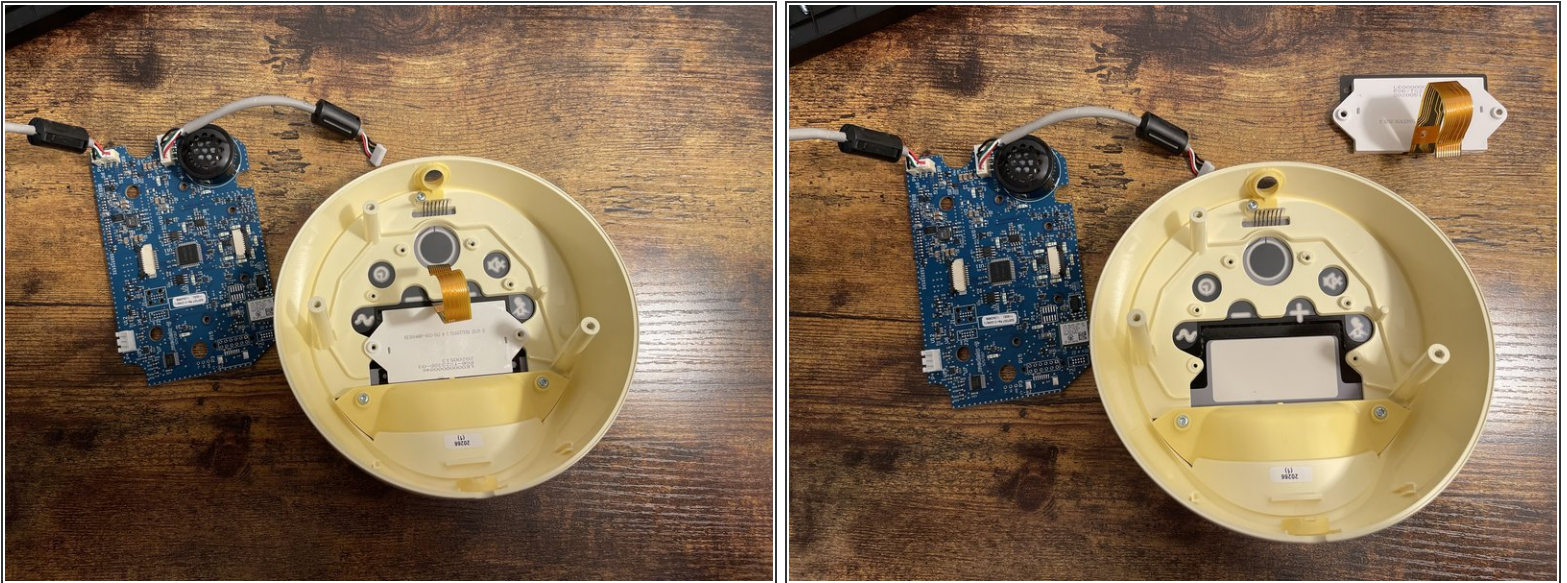
- The battery is attached to the black pump casing you just removed with adhesive.

Step 6



- Remove the 6 T10 screws from the main board.

Step 7



- Remove the main board and display panel.

Step 8



- To put pump back together, perform steps in reverse.