



How to Fix a Tear on a Leather Couch

This guide is to help you repair a tear on a leather couch using simple techniques.

Written By: Claudia Jimenez



INTRODUCTION

Having a leather sofa is an expensive essential you wouldn't want to lose or have to throw away because of a reparable tear. Yet, it is not very common for people to know what to do in these situations since a leather couch sounds difficult to mend even though it is not. This is an effective technique that only requires a few materials and a basic sewing technique to get your sofa back in shape.



TOOLS:

- [Subpatch](#) (1)

Cloth

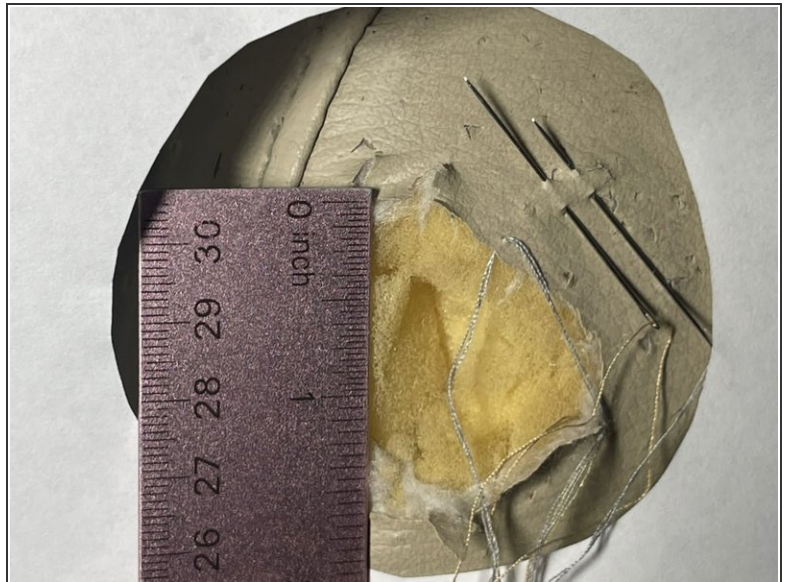
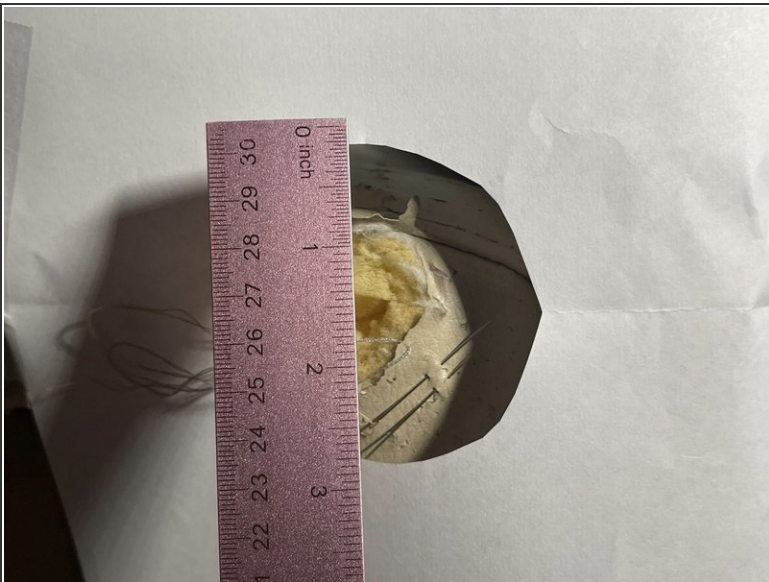
- [Ruler](#) (1)
 - [Hand Sewing Needle](#) (1)
 - [Sewing Thread](#) (1)
 - [Angelus Leather Paint](#) (1)
 - [Leather heavy filler](#) (1)
 - [Fabric Scissors](#) (1)
 - [Isopropyl Alcohol 70%](#) (1)
 - [Leather Glue](#) (1)
 - [Soft Cloth](#) (1)
-

Step 1 — How to Fix a Tear on a Leather Couch



- Clean the area with small amount of alcohol on a damp washcloth.

Step 2



- Measure the length and width of the tear to determine how much subpatch will be needed.
- Add an extra 1 cm border to each side.
- Cut the subpatch according to the measurements.

Step 3



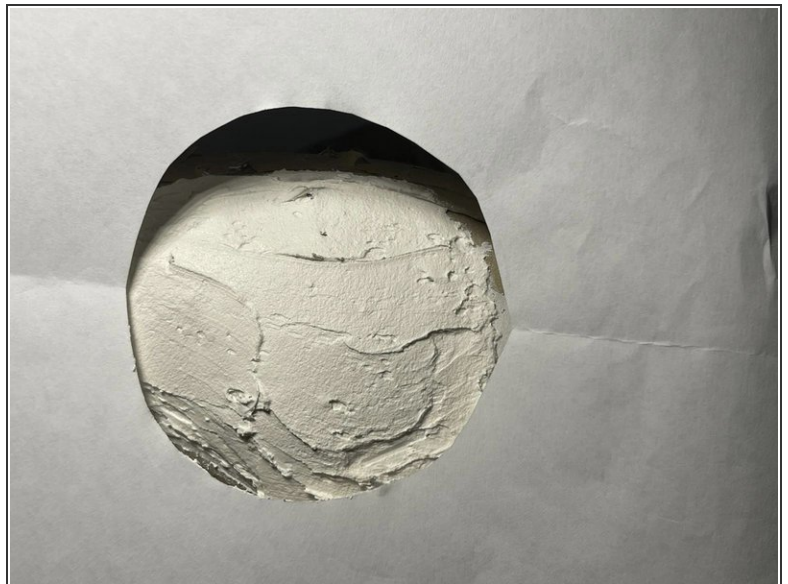
- Place the sub patch in the hole right behind the tear.
- Position the sub patch to have 1 cm of excess cloth behind the border of the tear, so the thread can adhere to it.
- Make a few stitches to secure the patch in place.

Step 4



- i** As an alternative to sewing, you can use vinyl or leather glue to secure the patch in place and close all the flaps of the tears on the surface of the subpatch.
- Put an even layer of glue behind the border of the tear, adhering it to the patch.

Step 5



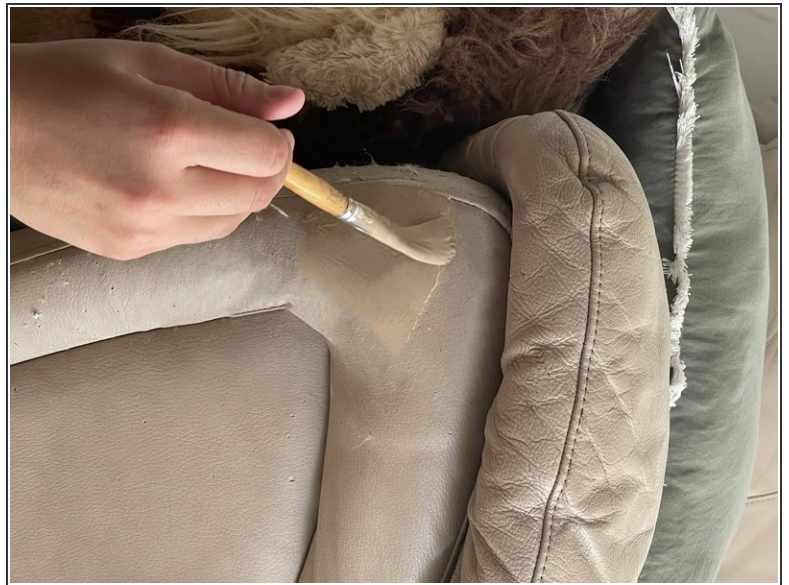
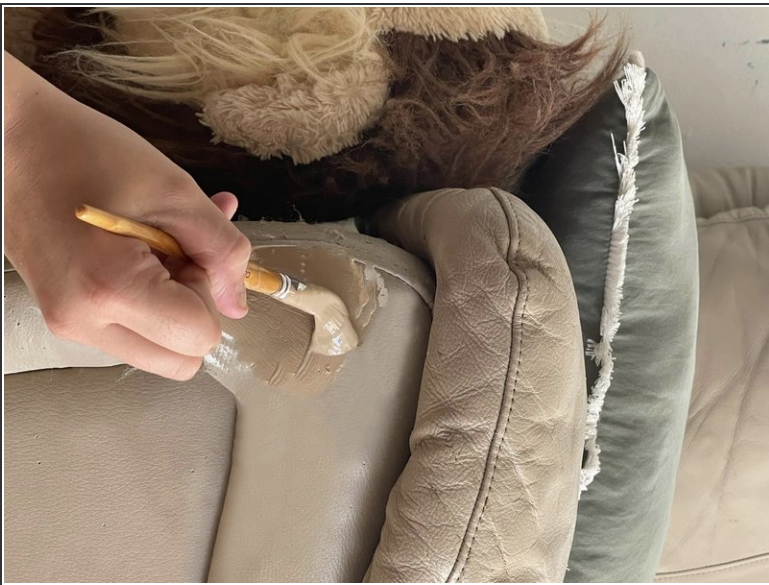
- Once the patch is stable and dry, use a spatula to apply the leather repair filler in the crevice until you have an even surface.

Step 6



- Use sandpaper to smoothen and even out the surface once it's dry.
- Use the sandpaper to remove any excess filler or wipe it off with alcohol on a damp washcloth.

Step 7



- Brush over the heavy filler using a leather paint that matches the color of your sofa.