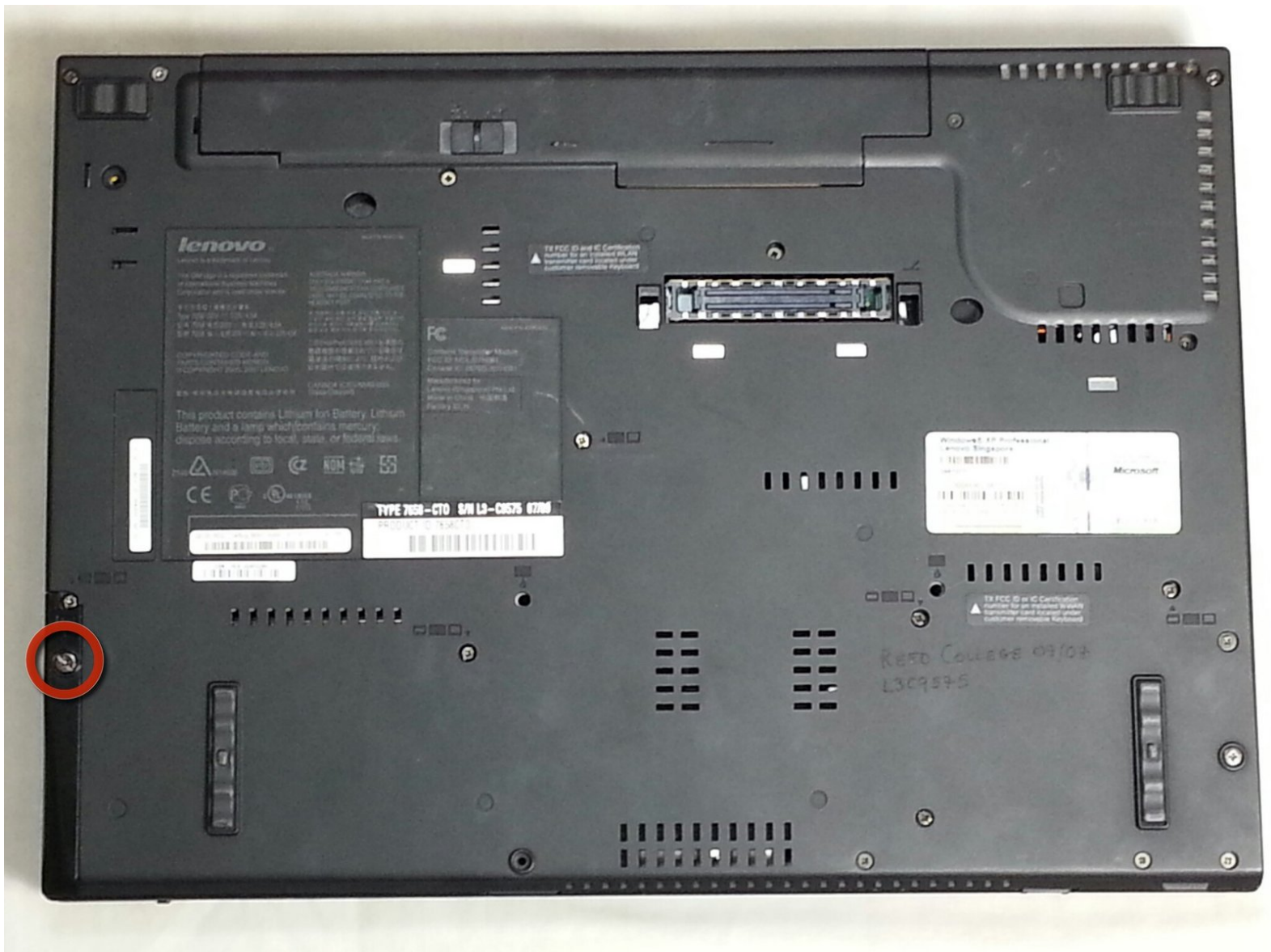




IBM/Lenovo Thinkpad T61 Hard Drive Replacement

If you want to upgrade your ThinkPad with a...

Written By: Kyle



INTRODUCTION

If you want to upgrade your ThinkPad with a brand new SSD to unlock better performance with your laptop, this guide will show you how to access the hard drive slot and to switch out (or insert) a hard drive.



TOOLS:

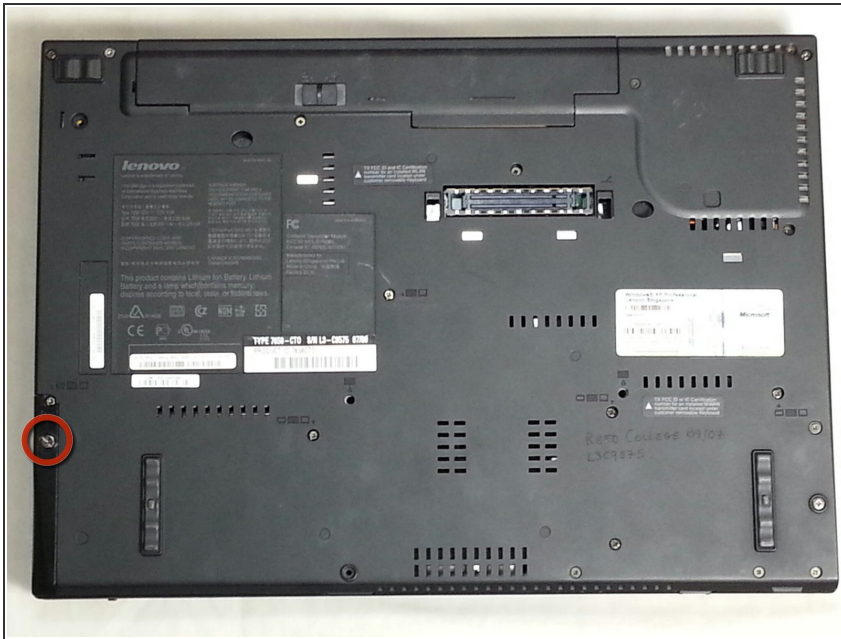
- [Phillips #0 Screwdriver](#) (1)



PARTS:

- [Crucial MX500 1 TB SSD](#) (1)
- [Crucial MX500 250 GB SSD](#) (1)
- [Crucial MX500 500 GB SSD](#) (1)
- [Crucial MX500 2 TB SSD](#) (1)
- [ThinkPad T61 Hard Drive Caddy](#) (1)

Step 1 — Hard Drive



- Turn the computer over so that the back is facing upwards.
- Locate the screw in the bottom left-hand corner of the computer.

Step 2



- Using a #0 Phillips screwdriver, remove the 17 mm screw.

Step 3



- Carefully remove the plastic piece covering the hard drive by first pulling up then away from the computer.

Step 4



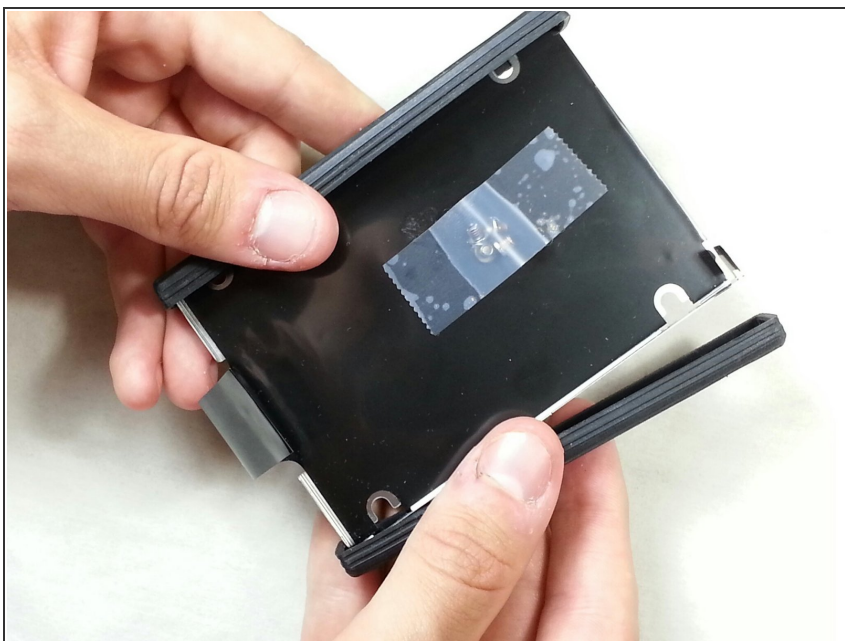
- Locate the folded black tab within the hard drive port.
- With a screwdriver, pull the black tab out of the slot.

Step 5



- Pull gently on the black tab and the metal tray holding the hard drive will slide out.

Step 6



- Remove the plastic coverings on both sides of the hard drive.
- ⓘ Note that there is no hard drive in this picture but the process will remain the same.

To reassemble your device, follow these instructions in reverse order. If your pull tab is broken, you will need to find something to use as a pull tab for the new drive. You can get a long piece of tape, and fold the end and stick the rest to the drive.