



Beats Studio 2 Wireless Ear Cushions Replacement

This guide uses a Dr. Dre Beats Studio 2...

Written By: Keishally Santiago



INTRODUCTION

This guide uses a Dr. Dre Beats Studio 2 Wireless as an example for cushion replacements.

These headphones were very popular with teens, as their Bluetooth feature paved the path to wireless headphones widely used today. It becomes a hardship having to buy a new expensive pair because of the damaged cushions.

In reality, the cushions of the wireless headphones are designed to be replaceable, especially if storage conditions were not ideal and harmed the leather material of the cushions. Sometimes the cushions fall off pretty easily due to excessive usage or by the same storage conditions.

For that, inexpensive and replaceable cushions were made available for the installment of an average person, with no special skills needed.

TOOLS:

[Alcohol wipes](#) (2)
[Metal Spudger](#) (1)


PARTS:

[Beats Studio 2/3 Earpads](#) (1)
[Beats Studio 2/3 Earpad Cushion](#) (1)

Step 1 — Ear Cushions



- Insert a spudger between the plastic part of the headphone and the ear cushion.

 Using a sharp tool to pry may result in injury or further damage to the device. Instead, use a blunt prying tool such as a nylon spudger.

Step 2



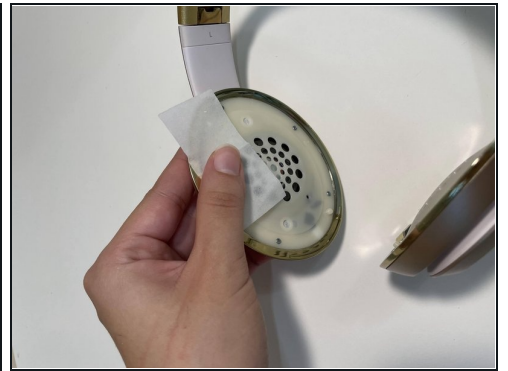
- Insert the spudger from different angles until the cushion is removed.
- Pull the rest of the cushion away from the adhesive with your hands.

Step 3



- Repeat Steps 1 and 2 with the other headphone cushion.

Step 4



- Remove any excess adhesive and clean the surface with alcohol wipes.
- Wait for the surface to completely dry before proceeding.

Step 5



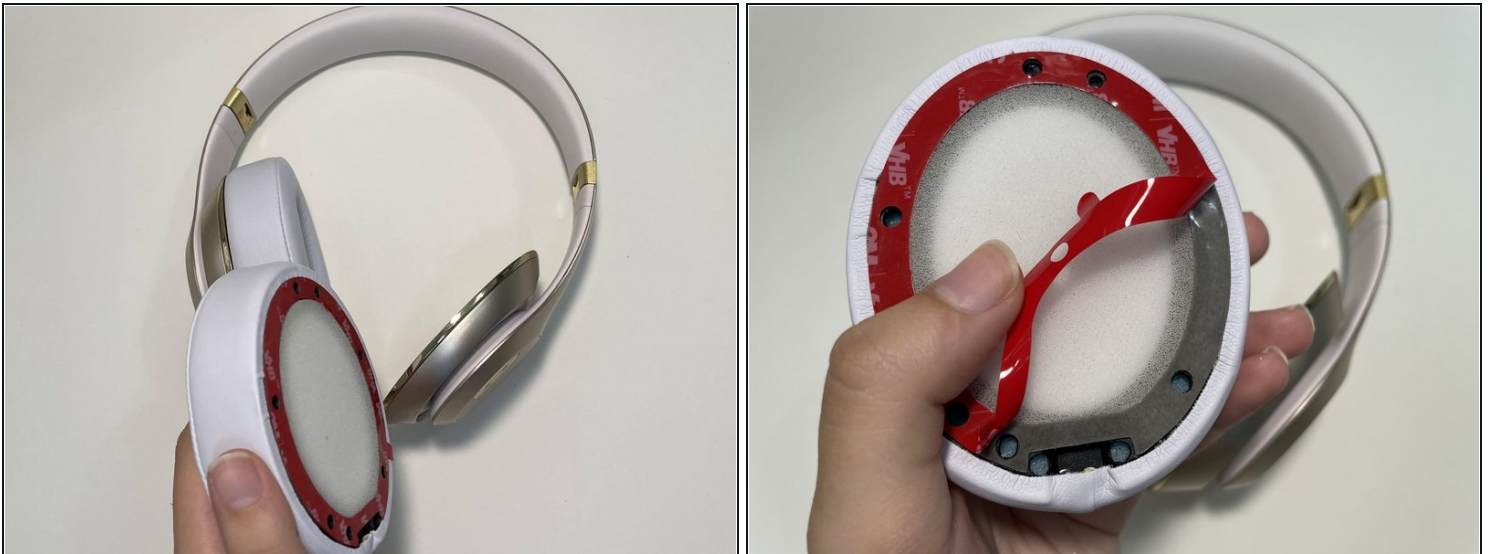
- Remove the adhesive tab from the new cushion.

Step 6



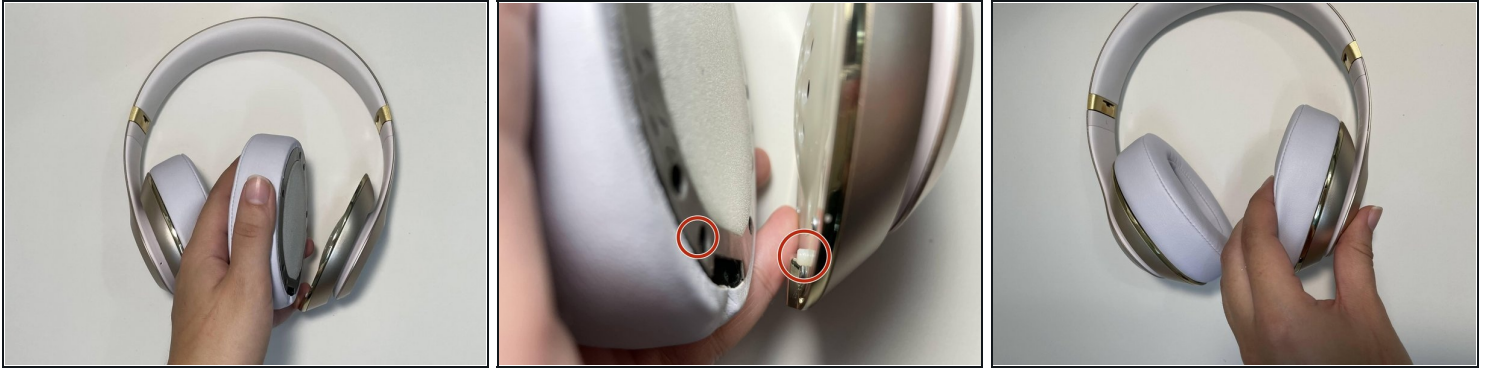
- Align one cushion to the dowels on one side of the headphones, working from top to bottom.
- Apply pressure to the cushion and dowel once attached.

Step 7



- Remove the adhesive from the other new cushion.

Step 8



- Align the new cushion to the dowels on the other side of the headphones, working from top to bottom.

Step 9



- Apply pressure to the cushion and dowel once attached.
 - Leave the headphones pressured to a shoe box overnight, for a more secure adhesive.
-