



# Toshiba Satellite C655D-S5084 Hard Drive Replacement

If your computer is running slow and needs a...

Written By: Shelby Kunz



---

## INTRODUCTION

If your computer is running slow and needs a little pick me up, one option is to replace or upgrade your hard drive. This guide will show you how to remove your hard drive and install a replacement in your Toshiba Satellite C655D-S5084.



### TOOLS:

- [Phillips #1 Screwdriver](#) (1)
-

## Step 1 — Hard Drive



- Remove the 5.5 mm (F5) screw using the Phillips #0 screwdriver.
- Remove the plastic cover.
- ⓘ The screw may be connected to the cover. If so, loosen it, remove the cover and proceed to the next step.

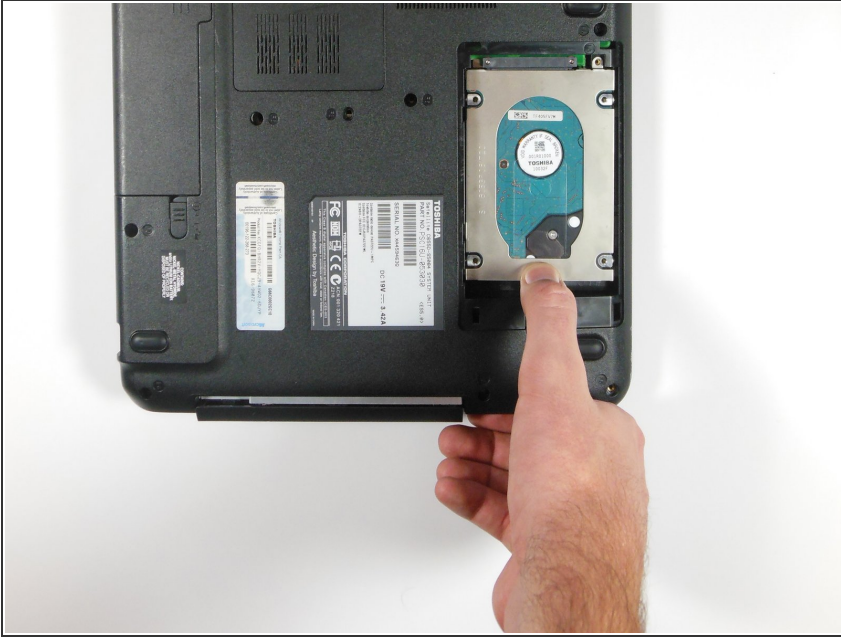
## Step 2



- Remove the 2.5 mm screw (F3) inside the hard drive casing using the Phillips #1 screwdriver.
- ⓘ The screw is located on the small metal tab of the hard drive.

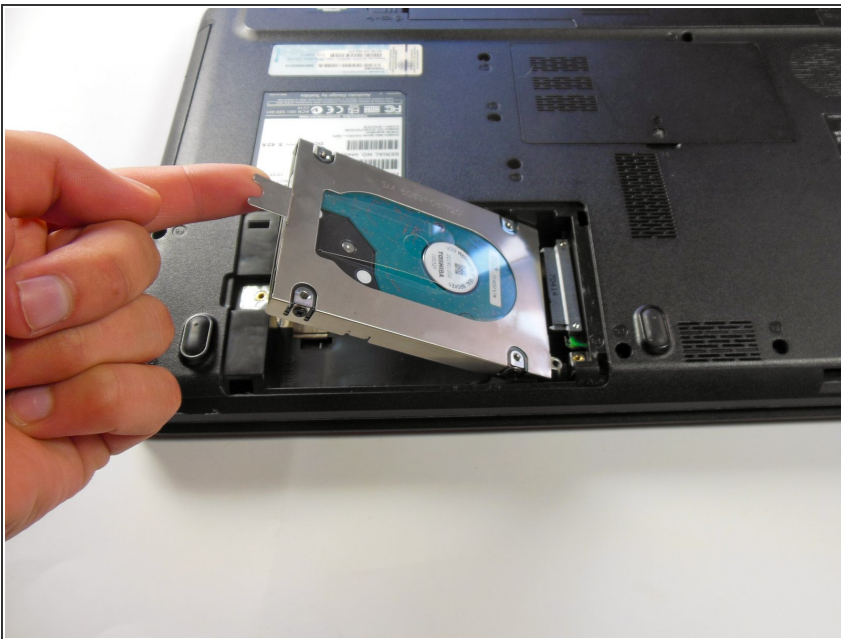


### Step 3



- Slide the large metal tab on the hard drive away from its attachment.
- ⓘ With the battery compartment on your left, use your thumb to slide the tab towards you.

### Step 4



- Lift the large metal tab on the hard drive to remove completely.
- ⚠ Do not lift until the hard drive is completely free from its base attachment, otherwise you may damage the base.

To reassemble your device, follow these instructions in reverse order.