



Logitech H800 Wireless Headset Battery Replacement

How to remove and replace a worn out or dead battery in a Logitech H800 wireless headset.

Written By: Kyle Smith



INTRODUCTION

Follow this guide to remove and replace the battery on a Logitech H800 wireless headset. You may need to do this repair if the battery no longer holds a charge.

For your safety, discharge the battery below 25% before disassembling your device. This reduces the risk of a dangerous thermal event if the battery is accidentally damaged during the repair. If your battery is swollen, [take appropriate precautions](#).



TOOLS:

- [Spudger](#) (1)

Optional

Step 1 — Turn off the headset



- Shift the power switch down to the **OFF** position to turn off the headset.
- ⓘ The power switch is located on the right ear cup.

Step 2 — Rotate the battery cover



- Use two fingers or your palm to rotate the battery cover on the left ear cup counterclockwise.
- ⓘ The indicator on the battery cover should point to the right, protruding circle on the headset when the battery cover is unlatched.

Step 3 — Remove the battery cover



- Tilt the left ear cup down to remove the battery cover.
- ★ To reinstall the battery cover, line up the arrow on the inside of the ear cup with the one on the battery cover.
- ⓘ The ear cup arrow is located at the top of the battery compartment above the battery. The battery cover arrow is located on the inside top edge of the cover.

Step 4 — Remove the battery



⚠ The battery is still connected to the headset by a cable connector at the top of the battery recess. Do not try to completely remove the battery before disconnecting it.

⚠ While removing the battery, keep it as close to the recess as possible to prevent straining the cables.

- Use your finger to lift up the right side of the battery about 0.5 cm (when the battery cables are oriented up).
- ⓘ You only need to lift it high enough to be able to pull it out of the recess.

Step 5



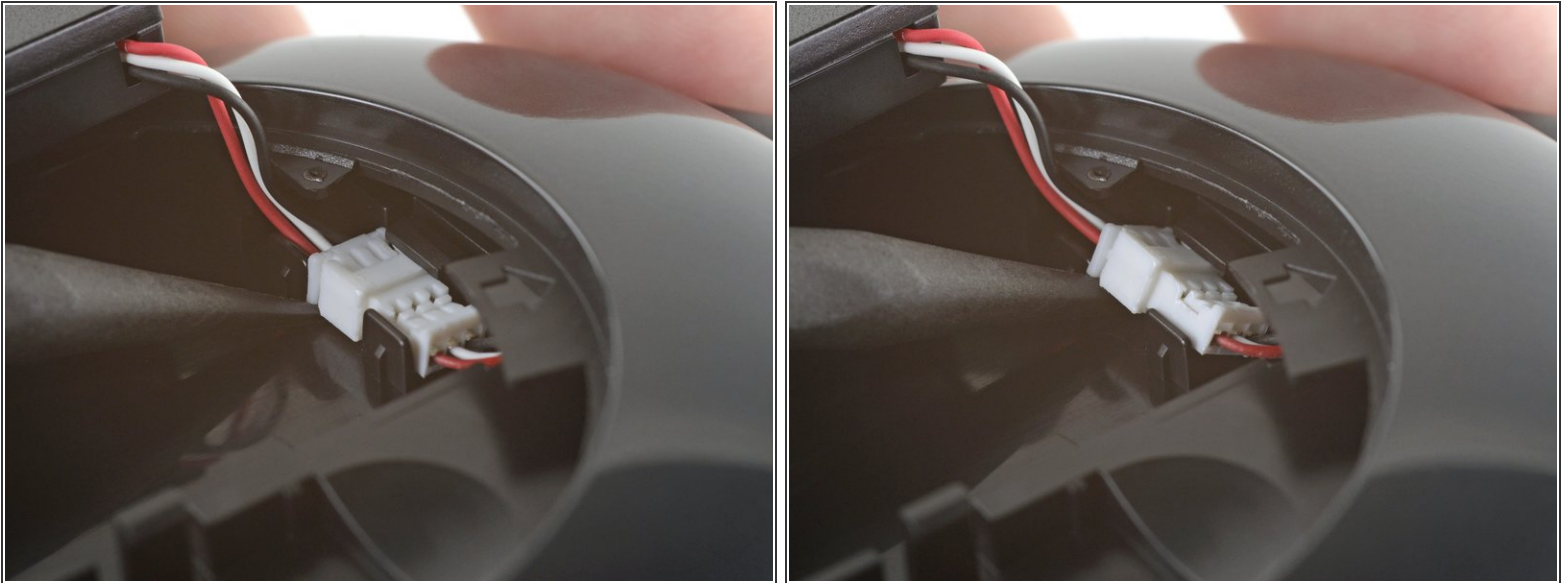
- Pull the battery to the right and away from the ear cup to remove it from the recess.

Step 6



- Rotate the battery 90 degrees clockwise so that it rests on the left side of the ear cup.

Step 7



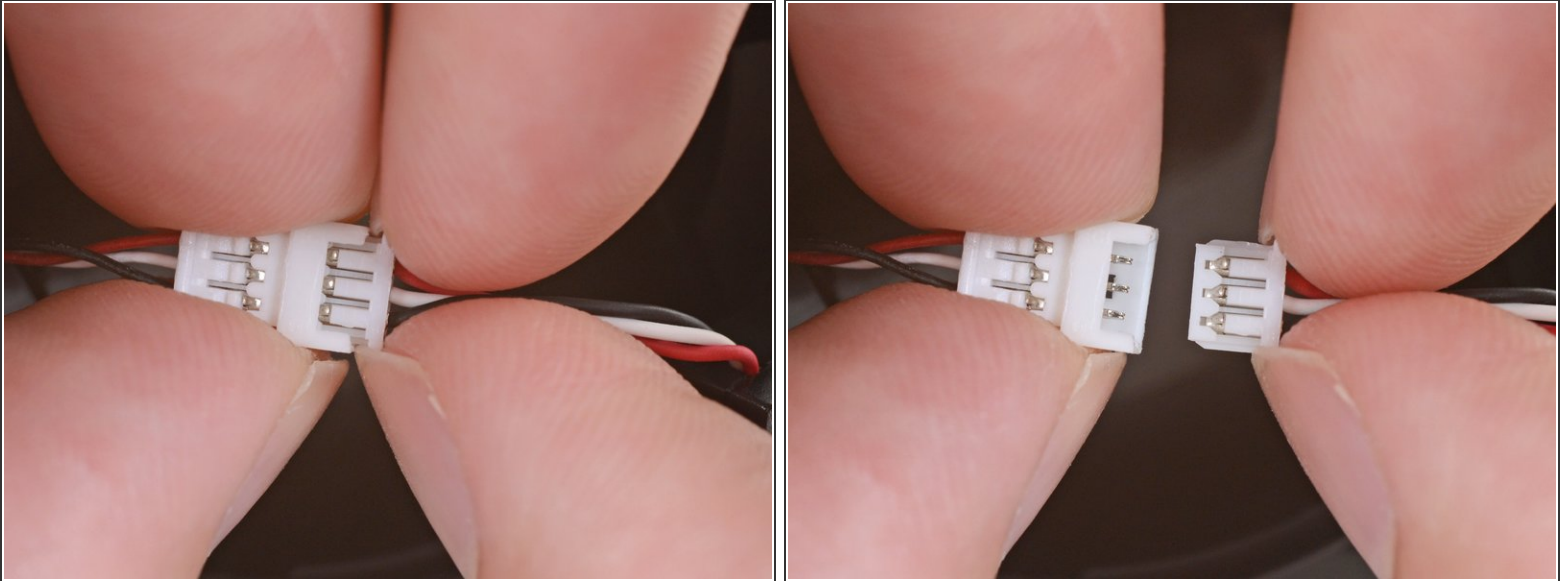
- Use a spudger or your fingernail to pry up the edge of the battery connector resting against the flat clip enough that the whole connector pops out of the clips securing it.
- ✦ During reassembly, place one edge of the battery connector under the large upper clip, then press down on the opposite edge to fully seat it.
- ⓘ Make sure the battery connector is oriented correctly. The wider part of the battery connector should fit between the left and right flat lower clips.

Step 8



- Place the headset on your work surface so the control switches face up.
- Place the battery on the surface so the cables face up.
- ⚠ Place the battery as close to the ear cup as possible to avoid straining the cables.

Step 9



- While holding the battery connector socket, pull the battery connector out.

⚠ Hold the battery connector socket and battery connector by their plastic frames and not by their cables to prevent damaging them.

- ① If necessary, pull the battery connector with a rocking motion to "walk" it out of its socket.
- ① You may need to use your fingernails to pull the battery connector out by the shelf near the cables.

- ☑ When inserting the battery connector, make sure it is oriented correctly. The red cable on the battery connector should line up with the red cable on the battery socket.

Step 10



- Remove the battery from the headset.
- ⓘ This headset has a plastic reinforced battery pack. You can reinstall the original battery if needed.

To reassemble your device, follow these instructions in reverse order.

Take your e-waste to an [R2 or e-Stewards certified recycler](#).

Repair didn't go as planned? Try some [basic troubleshooting](#), or ask our [Logitech H800 Answers community](#) for help.