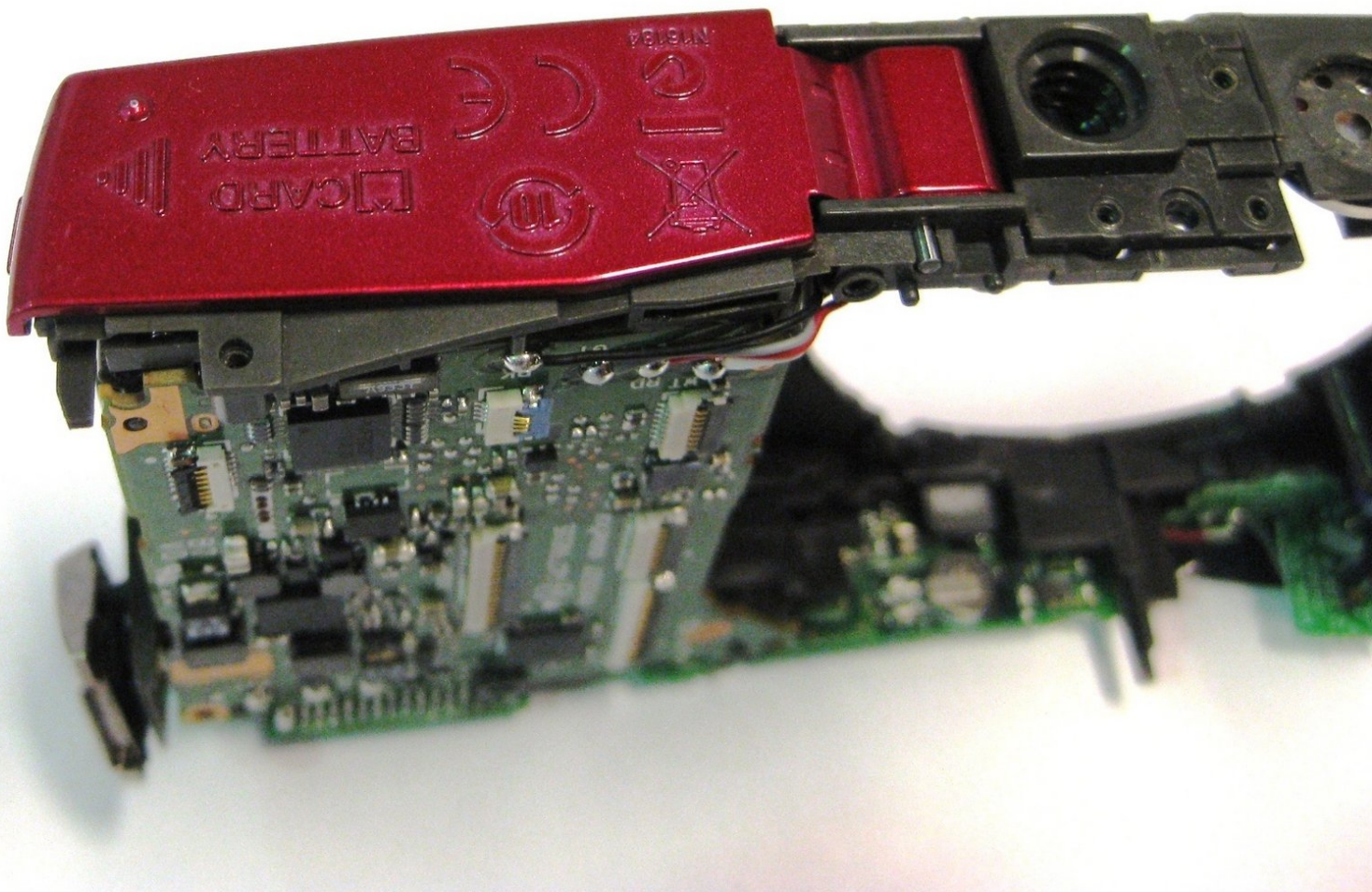




# Nikon Coolpix S630 Battery Cover Door Replacement

This is a guide on how to replace your battery cover door for your Nikon Coolpix S630.

Written By: Aulivia Bouchaleun



---

## INTRODUCTION

Before replacing your battery cover door for your Nikon Coolpix S630 you would need to read how to remove back panel and front panel. Removing both back and front panels are necessary to starting this guide.



### TOOLS:

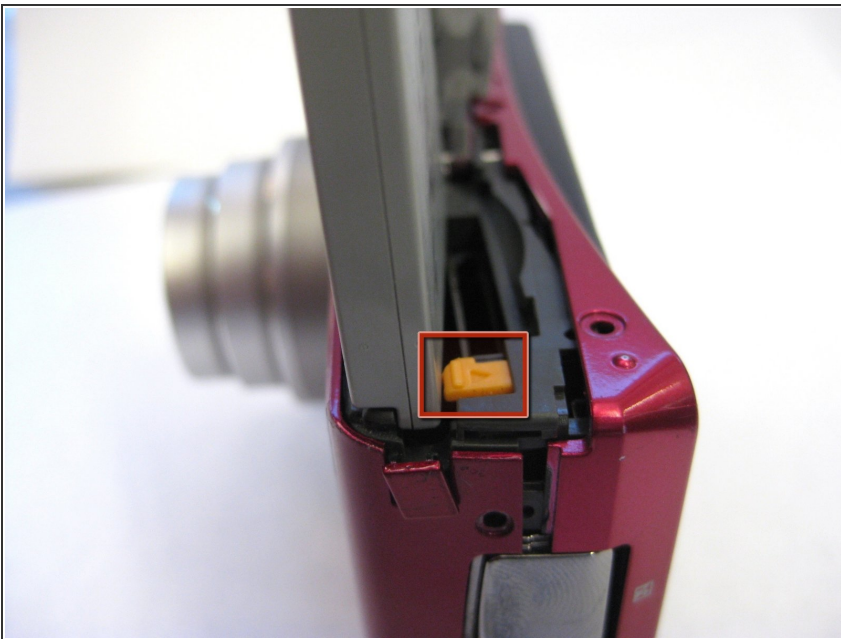
- [Tweezers](#) (1)
  - [iFixit Opening Tools](#) (1)
-

## Step 1 — Battery Compartment



- The battery compartment is located on the bottom of the camera.
- Place your thumb on the battery door.
- Slide the door away from the camera in the direction the arrow points to.

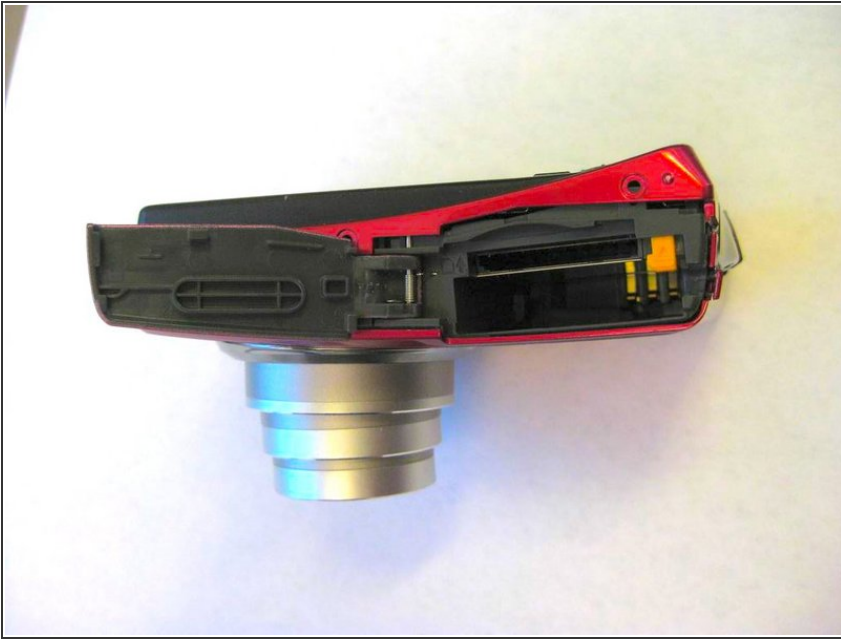
## Step 2 — Battery



- Slide the yellow tab towards the back of the camera.
- The battery should pop out.
- Remove the battery.



### Step 3 — Memory Card



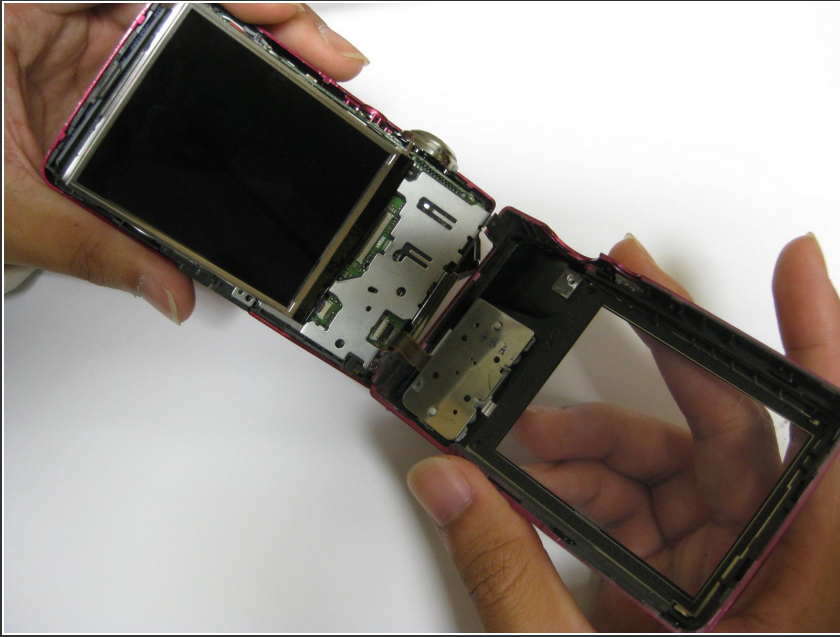
- Press the memory card down into the camera.
- The memory card should pop out.
- Remove the memory card.

### Step 4 — Back Cover Removal



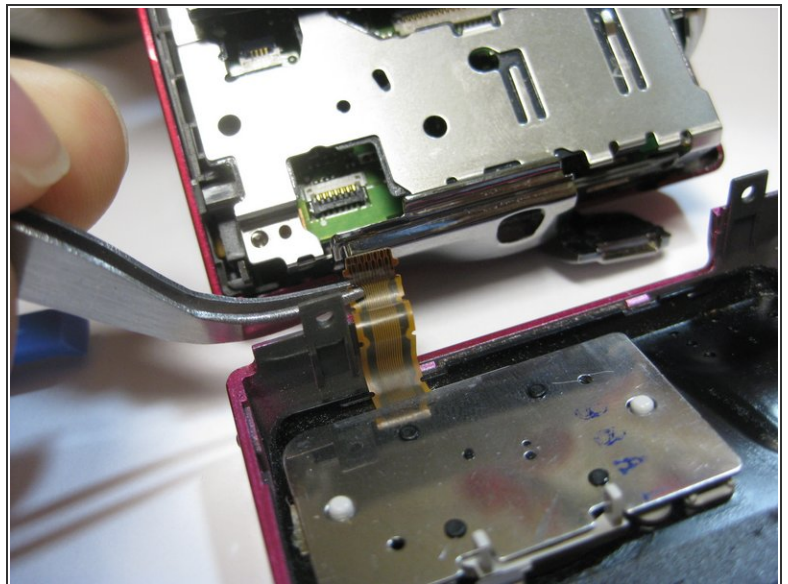
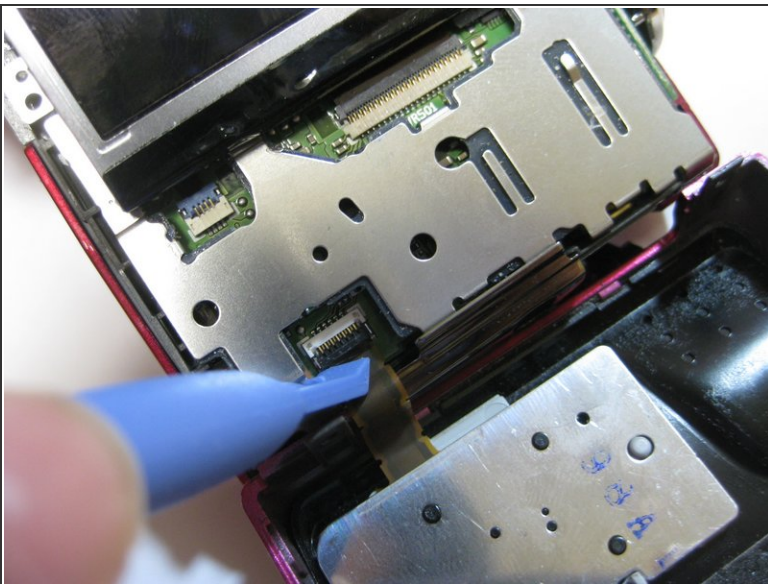
- Unscrew the two 3.5mm Phillips screws from the side with the AV outlet.
- Unscrew the 3.5mm Phillips screw from the opposite side of the camera.
- Unscrew the six 3.5mm Phillips screws from the bottom of the camera.

## Step 5



- Carefully remove the back casing from the camera.
- ⚠ Be mindful when removing the back casing as there is a ribbon that still connects the back casing to the motherboard.

## Step 6 — Detaching Ribbon



- Place the plastic opening tool underneath the ribbon tab as shown. Gently lift the tab up.
- Gently pull the ribbon from the logic board with tweezers.
- With the ribbon disconnected, the back casing should now be detached from the rest of the camera.



## Step 7 — Front Cover



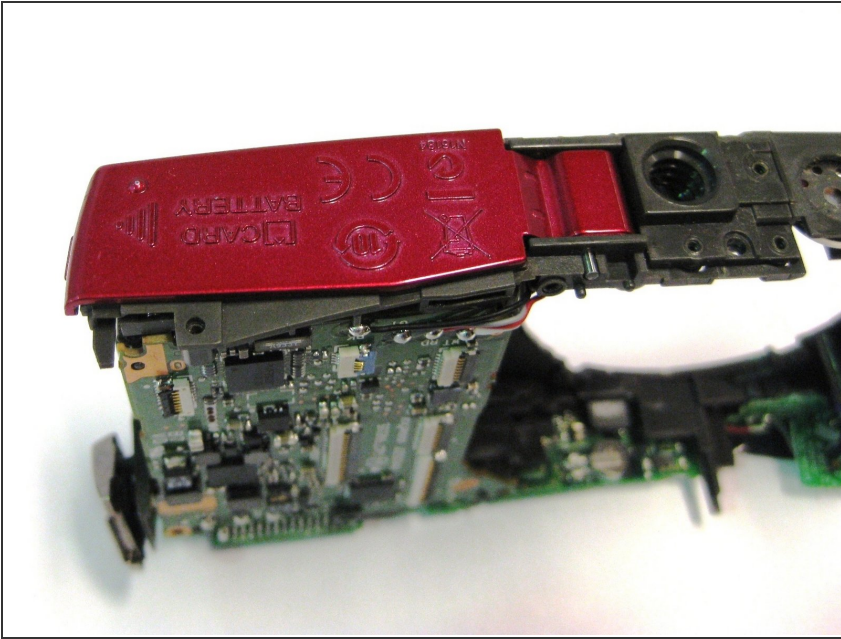
- Locate a small, rectangular flap above the battery cover door.
- Push the small, rectangular flap back through the hole.

## Step 8



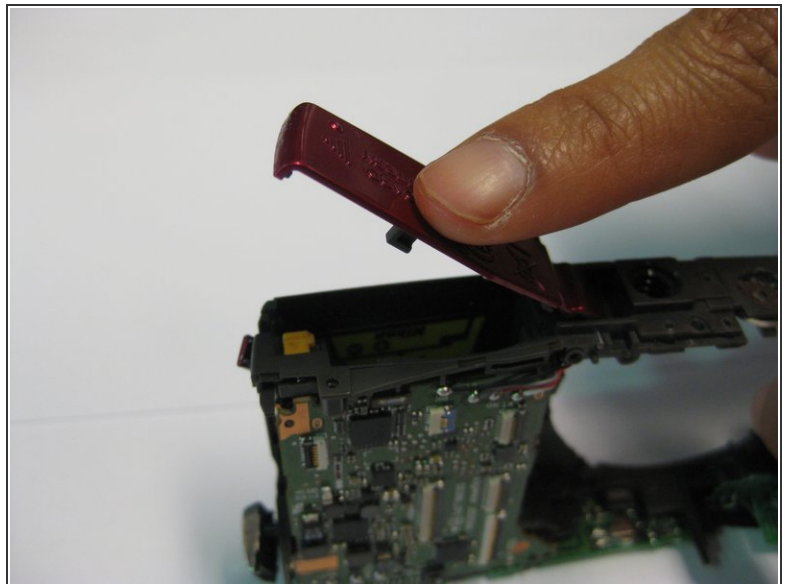
- Using the plastic opening tool, gently pry open the front cover. Gently remove the front cover.
- ★ Make sure to hold the camera down when removing the front cover.

## Step 9 — Battery Cover Door



- Locate the battery cover door.

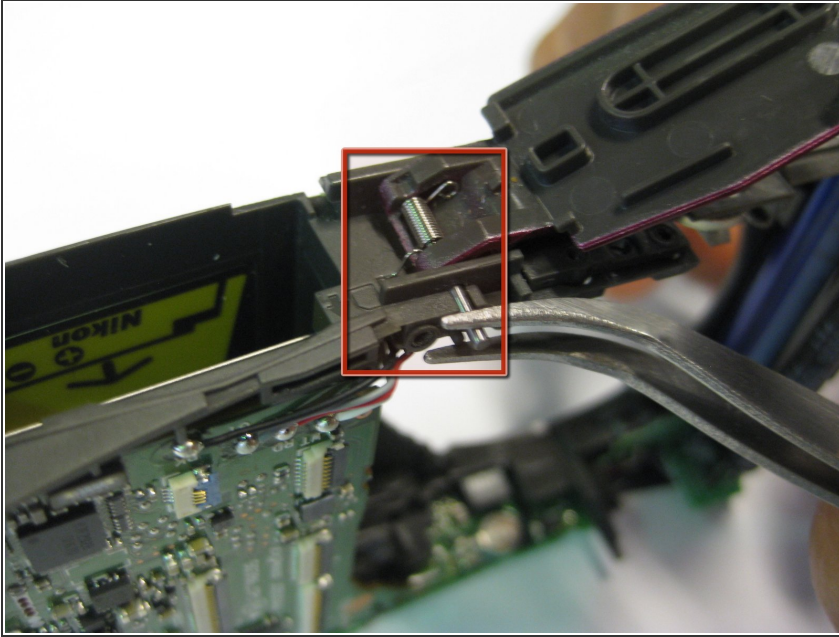
## Step 10



- Press and slide the cover door open.

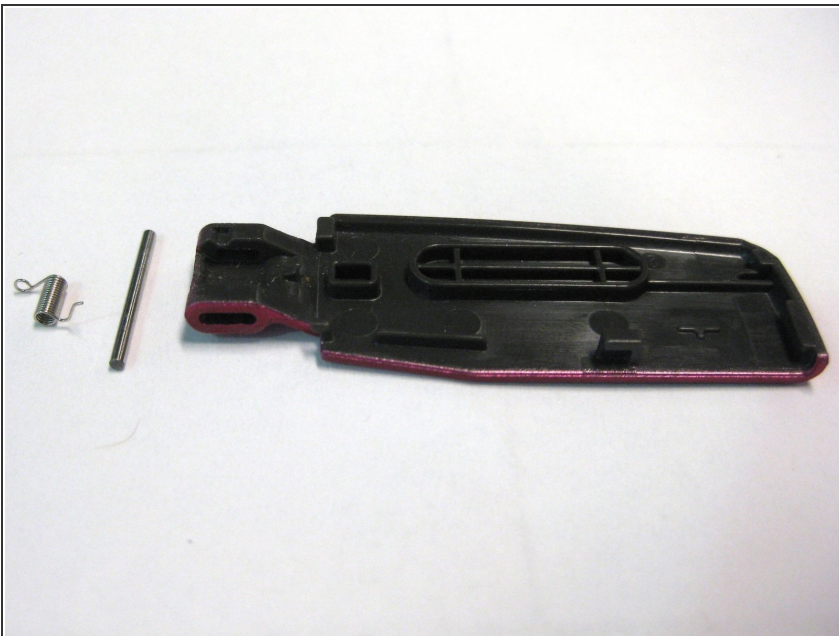


## Step 11



- Locate the small rod that is securing the door in place
- Using a tweezers, grab the rod and slowly pull the rod out
- ⓘ Note: Be careful as you try to pull the rod out because the spring may pop out

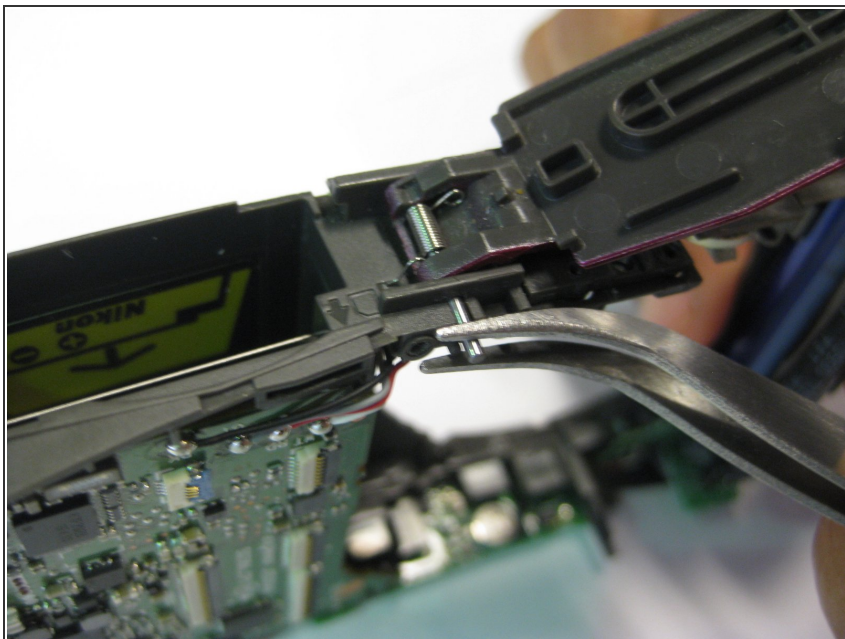
## Step 12



- Replace battery cover door.
- ⓘ Note: To reinstall a new battery cover door, make sure you have these parts: spring, rod, and the battery cover door.



## Step 13



- Place battery cover door back into place with spring between the insertion holes.
- Using a tweezers, gently slide the rod through the insertion holes and through the spring.

To reassemble your device, follow these instructions in reverse order.